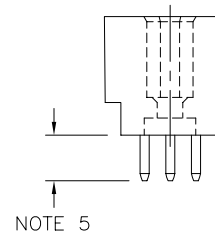
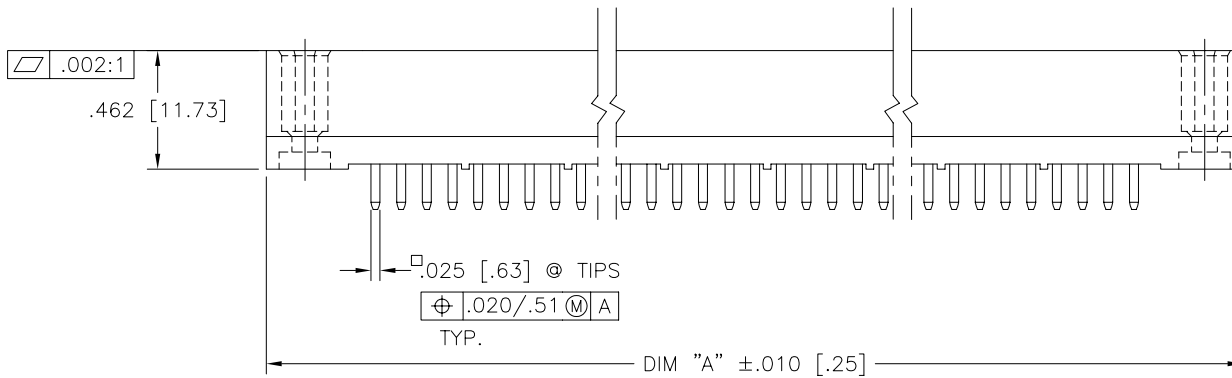
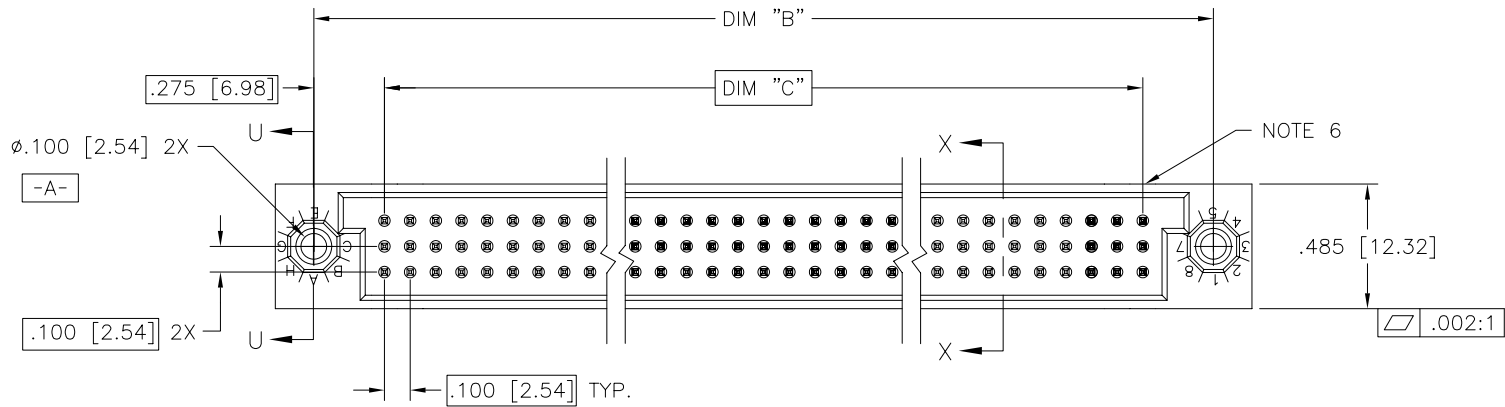


PRODUCT NUMBER
SEE NOTE 1



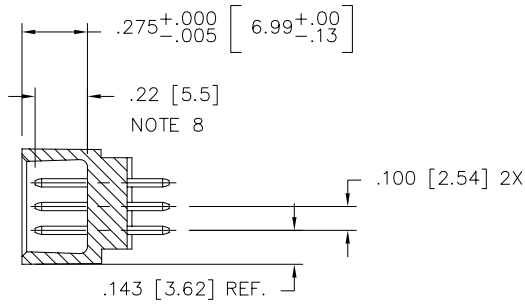
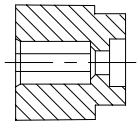
| | | | | | | | | |
|---------------------------------------|----------------|-----|---------|-----------------------|----------------------------------|-------------------------------|-------------------------------|--|
| mat'l. code | | | | surface ISO 1302 ✓ | tolerance ISO 406 ISO 1101 | projection INCH/MM | product family HPC | |
| tolerances unless otherwise specified | | | | | | title | | |
| ltr | ecn no | dr | date | angles | linear | 3 ROW VERTICAL HEADER | | |
| A | V11697 | MEM | 6/22/01 | | .XX±.01/.3 | S.T.B., 0 G.P., HI-DURABILITY | | |
| B | V03-0531 | TAB | 5/09/03 | | .XXX±.005/.13 | scale 1:1 | | |
| C | M06-0255 | AGS | 7/6/06 | 0°±2° | .xxxx±.0020/.051 | dwg no sheet 1 of 2 size | | |
| | | | | dr | M. MOSTOLLER | 6/22/01 | 51175 A3 | |
| | | | | enr | M. MOSTOLLER | 6/22/01 | type Product Customer Drawing | |
| | | | | chr | J. ALLISON | 6/22/01 | | |
| | | | | app | M. MOSTOLLER | 6/22/01 | | |
| sheet index | revision sheet | C | C | | | | | |
| | | 1 | 2 | | | | | |



| PRODUCT NUMBER | DIM. | LENGTH FORMULAS |
|----------------|---------|--|
| SEE NOTE 1 | DIM "A" | .100/2.54 x NO. OF COLUMNS +.75/19.1 |
| | DIM "B" | .100/2.54 x NO. OF COLUMNS +.450/11.43 |
| | DIM "C" | .100/2.54 x NO. OF COLUMNS -.100/2.54 |

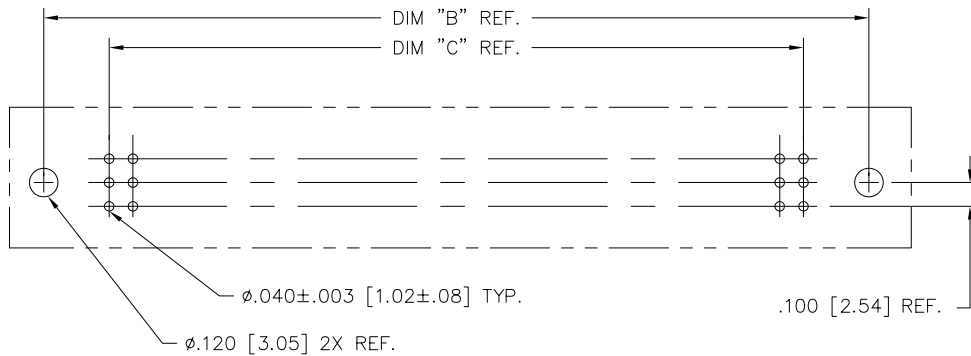
NOTES:

- ① PRODUCT NUMBERING CODE:
 $51175 - X YYY Z$
 TAIL LENGTH (NOTE 5)
 NO. OF POSITIONS (NOTE 2)
 PLATING (NOTE 4)
 BASE NUMBER
- ② THIS PRODUCT IS CONFIGURED IN SIZES OF 6 thru 80 COLUMNS IN INCREMENTS OF ONE.
 i.e.: 6,7,8,9,.....78,79,80.
- ③ HOUSING MATERIAL: GLASS AND MINERAL FILLED HIGH TEMP. THERMOPLASTIC. FLAME RETARDANT PER UL94V-0. COLOR: BLACK.
 PIN MATERIAL: PHOS BRONZE
- ④ PLATING CONTACT AREA OPTIONS:
 7 = 50u"/1.27u Ni UNDER ALL WITH 60u"/1.52u GXT ON CONTACT AREA, SnPb ON PCB INTERFACE.
- ⑤ TAIL LENGTH OPTIONS: ($\pm .015/.38$)
 A = .177/4.5 G = .250/6.35
 C = .533/13.54 J = .120/3.05
 D = .733/18.62
- ⑥ MANUFACTURERS NAME, PART NUMBER AND LOT CODE TO APPEAR ON THIS SURFACE PER BUS-12-108.
7. FOR DOCUMENTATION MENU, SEE BUS-01-057.
- ⑧ REFERENCE 50804 FOR FIRST MATE LAST BREAK AVAILABLE OPTIONS AND FOR SELECTIVELY LOADED HEADER WORKSHEET.



SECTION U-U

SECTION X-X



RECOMMENDED PCB LAYOUT
 (ALL HOLES LOCATED ON .100/2.54 GRID UNLESS OTHERWISE SPECIFIED)

| | | | | | | | | | |
|-------------|--|-----------------------|--|----------------------------------|--|---------------------------------------|--|-------------------------------|--|
| mat'l. code | | surface ISO 1302 ✓ | | tolerance ISO 406 ISO 1101 | | projection ⊕ | | product family HPC | |
| ltr | | ecn no dr | | date | | tolerances unless otherwise specified | | title | |
| c | | | | | | .XX±.01/.3 | | 3 ROW VERTICAL HEADER | |
| | | | | | | linear .xxx±.005/.13 | | S.T.B., 0 G.P., HI-DURABILITY | |
| | | | | | | 0°±2' | | scale 1:1 | |
| | | | | | | .xxxx±.0020/.051 | | dwg no sheet 2 of 2 size | |
| | | | | dr M. MOSTOLLER 6/22/01 | | | | 51175 A3 | |
| | | | | enr M. MOSTOLLER 6/22/01 | | | | type Product Customer Drawing | |
| | | | | chr J. ALLISON 6/22/01 | | | | | |
| | | | | app M. MOSTOLLER 6/22/01 | | | | | |
| sheet index | | revision sheet | | | | | | | |