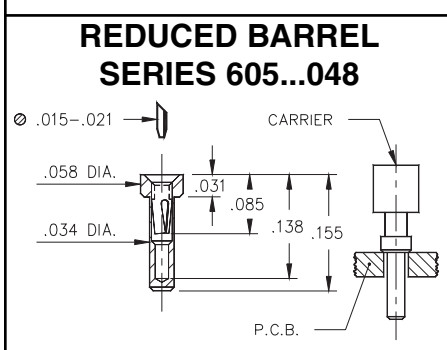
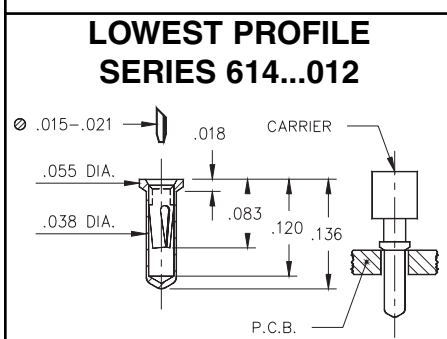
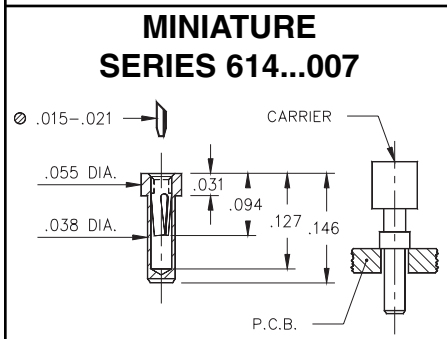
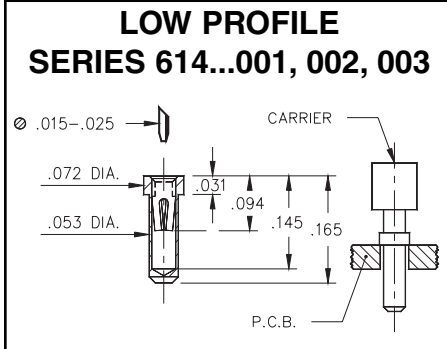
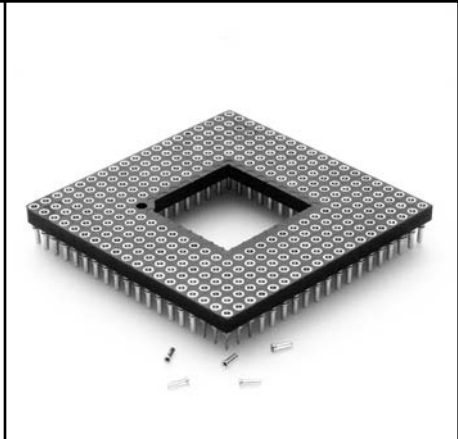
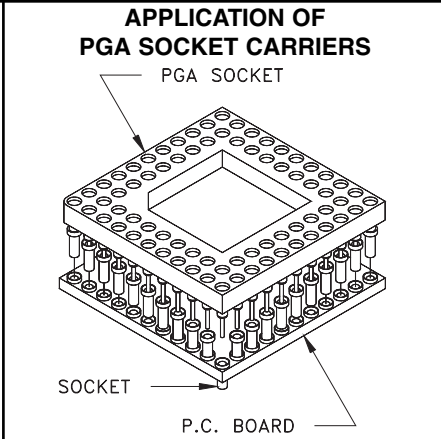


- Series 614 & 605 PGA carrier sockets offer 4 receptacle styles.
- Many combinations of receptacles and clips to cover all applications.
- Hi-Temp PCT polyester insulator material suitable for all forms of soldering.
- Carrier sockets provide a convenient way of loading groups of receptacles onto a PC board.



Ordering Information

1. Select receptacle type at left in combination with receptacle chart below to determine series prefix & suffix numbers.
 2. Specify 2-digit plating code from chart at bottom of page
 3. Locate footprint pattern from pages 107 to 111, the middle 8 digits of the part number will be located under the pattern.
- | Series | Plating Code | Window | Suffix |
|--------|--------------|--------|--------|
| 6 | | | 0 |
- No. of pins
Grid size
Pattern #
- Determined from footprint pattern pages 107 to 111

EXAMPLE OF COMPLETE PART NUMBER:
614-43-068-11-061001

This is a 68 pin (11x11 grid) insulator with a .6" square window and fitted with low profile receptacles. Pin sleeve is tin plated, inner contacts are Mill-Max #32 and are plated 30μ" gold.

Suffix	Receptacle/ Clip Chart			
01	Low Profile Mill-Max #32 clip, standard low force, recommended for devices with less than 150 pins. See page 208 for details.			
02	Low Profile Mill-Max #35 clip, ultra low force, recommended for devices with more than 150 pins, but less than 250 pins. See page 209 for details.			
03	Low Profile Mill-Max #43 clip, "ultra lite", recommended for devices with more than 250 pins. See page 209 for details.			
07	Miniature Mill-Max #21 clip, standard low force. See page 206 for details.			
12	Lowest Profile Mill-Max #21 clip, standard low force. See page 206 for details.			
48	Reduced Barrel Mill-Max #21 clip, standard low force. See page 206 for details.			
SPECIFY PLATING CODE XX=	13	93	43	
Sleeve (Pin)	10μ" Au	200μ" Sn/Pb	200μ" Sn	
Contact (Clip)	30μ" Au	30μ" Au	30μ" Au	