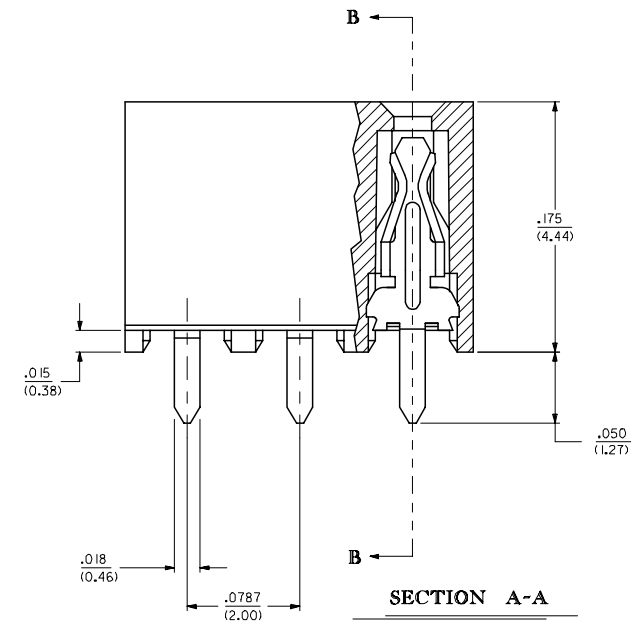
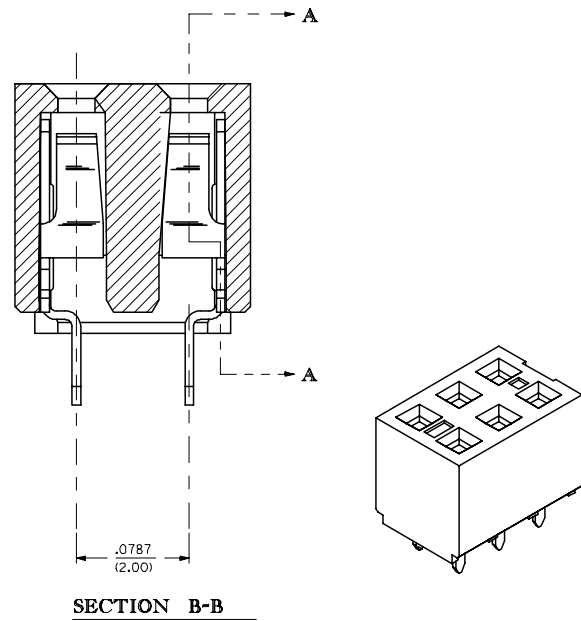


NOTES:

- 1 - HOUSING MATERIAL: GLASS FILLED HIGH TEMP. THERMOPLASTIC. COLOR: BLACK.
- 2 - TERMINAL MATERIAL: PHOSPHOR BRONZE
- 3 - SEE SHEET 2 FOR CIRCUIT SIZE, PART NUMBERS AND OVER-ALL DIMENSIONS.
- 4 - FOR ILLUSTRATION, 6 CIRCUIT ASSEMBLY SHOWN.
- 5 - REFER TO PRODUCT SPECIFICATION PS-79107. PS-79107 DOES NOT COVER PLATING OPTION 3.
- 6 - PACKAGING PER PK-70873-0180.
- 7 - SEE SHEET 3 FOR VOIDED ASSEMBLIES.
- 8 - CKTS. NUMBERED FROM LEFT TO RIGHT WHEN PART IS VIEWED FROM TOP WITH RECESS ON RIGHT AS SHOWN.

PLATING OPTION :

- (1) .000030 MIN. GOLD PLATE IN SELECTED AREA AND .000075 MIN. TIN/LEAD IN SELECTED AREA OVER .000050 MIN. NICKEL OVER-ALL
- (2) .000015 MIN. GOLD PLATE IN SELECTED AREA AND .000075 MIN. TIN/LEAD IN SELECTED AREA OVER .000050 MIN. NICKEL OVER-ALL
- (3) .000005 MIN. GOLD PLATE IN SELECTED AREA AND .000075 MIN. TIN/LEAD IN SELECTED AREA OVER .000050 MIN. NICKEL OVER-ALL
- (4) .000030 MIN. GOLD PLATE IN SELECTED AREA AND .000075 MIN. TIN IN SELECTED AREA OVER .000050 MIN. NICKEL OVER-ALL
- (5) .000015 MIN. GOLD PLATE IN SELECTED AREA AND .000075 MIN. TIN IN SELECTED AREA OVER .000050 MIN. NICKEL OVER-ALL
- (6) .000005 MIN. GOLD PLATE IN SELECTED AREA AND .000075 MIN. TIN IN SELECTED AREA OVER .000050 MIN. NICKEL OVER-ALL



ADD ASSY P/N FOR L/F EC NO: S2005-0004 DRAWN:SEE CHKD:ATSEE APPR:SKTOH	2004/07/20 2004/07/20 2004/07/22	DESCRIPTION REV	QUALITY SYMBOLS	GENERAL TOLERANCES (UNLESS SPECIFIED)	DIMENSION STYLE	SCALE	DESIGN UNITS	THIRD ANGLE PROJECTION																		
			$\nabla=0$ $\sphericalangle=0$	<table border="1"> <tr> <th></th> <th>mm</th> <th>INCH</th> </tr> <tr> <td>4 PLACES</td> <td>± ---</td> <td>± ---</td> </tr> <tr> <td>3 PLACES</td> <td>± .010</td> <td>± ---</td> </tr> <tr> <td>2 PLACES</td> <td>± .015</td> <td>± 0.25</td> </tr> <tr> <td>1 PLACE</td> <td>± ---</td> <td>± 0.38</td> </tr> <tr> <td colspan="3">ANGULAR ±1/2°</td> </tr> </table>		mm	INCH	4 PLACES	± ---	± ---	3 PLACES	± .010	± ---	2 PLACES	± .015	± 0.25	1 PLACE	± ---	± 0.38	ANGULAR ±1/2°			IN/MM	NTS	INCH	<input checked="" type="checkbox"/> THIRD ANGLE <input type="checkbox"/> FIRST ANGLE
				mm	INCH																					
			4 PLACES	± ---	± ---																					
3 PLACES	± .010	± ---																								
2 PLACES	± .015	± 0.25																								
1 PLACE	± ---	± 0.38																								
ANGULAR ±1/2°																										

TIN/LEAD OPTION

CKT. SIZE	DIM. "A"		DIM. "B"		PLATING OPTION 2		PLATING OPTION 1		PLATING OPTION 3	
	INCH	MM	INCH	MM	EDP NO.	ENG. NO.	EDP NO.	ENG. NO.	EDP NO.	ENG. NO.
04	.079	(2.00)	.165	(4.19)	791-08-0001	79108-0001	791-08-0051	79108-0051	NOT TOOLED	79108-0101
06	.157	(4.00)	.244	(6.19)	791-08-0002	79108-0002	791-08-0052	79108-0052		79108-0102
08	.236	(6.00)	.322	(8.19)	791-08-0003	79108-0003	791-08-0053	79108-0053		79108-0103
10	.315	(8.00)	.401	(10.19)	791-08-0004	79108-0004	791-08-0054	79108-0054		79108-0104
12	.394	(10.00)	.480	(12.19)	791-08-0005	79108-0005	791-08-0055	79108-0055		79108-0105
14	.472	(12.00)	.559	(14.19)	791-08-0006	79108-0006	791-08-0056	79108-0056		79108-0106
16	.551	(14.00)	.637	(16.19)	791-08-0007	79108-0007	791-08-0057	79108-0057		79108-0107
18	.630	(16.00)	.716	(18.19)	791-08-0008	79108-0008	791-08-0058	79108-0058		79108-0108
20	.709	(18.00)	.795	(20.19)	791-08-0009	79108-0009	791-08-0059	79108-0059		79108-0109
22	.787	(20.00)	.874	(22.19)	791-08-0010	79108-0010	791-08-0060	79108-0060		79108-0110
24	.866	(22.00)	.952	(24.19)	791-08-0011	79108-0011	791-08-0061	79108-0061		79108-0111
26	.945	(24.00)	1.031	(26.19)	791-08-0012	79108-0012	791-08-0062	79108-0062		79108-0112
28	1.024	(26.00)	1.110	(28.19)	791-08-0013	79108-0013	791-08-0063	79108-0063		79108-0113
30	1.102	(28.00)	1.188	(30.19)	791-08-0014	79108-0014	791-08-0064	79108-0064		79108-0114
32	1.181	(30.00)	1.267	(32.19)	791-08-0015	79108-0015	791-08-0065	79108-0065		79108-0115
34	1.260	(32.00)	1.346	(34.19)	791-08-0016	79108-0016	791-08-0066	79108-0066		79108-0116
36	1.338	(34.00)	1.425	(36.19)	791-08-0017	79108-0017	791-08-0067	79108-0067		79108-0117
38	1.417	(36.00)	1.504	(38.19)	791-08-0018	79108-0018	791-08-0068	79108-0068		79108-0118
40	1.496	(38.00)	1.582	(40.19)	791-08-0019	79108-0019	791-08-0069	79108-0069		79108-0119
42	1.575	(40.00)	1.661	(42.19)	791-08-0020	79108-0020	791-08-0070	79108-0070		79108-0120
44	1.654	(42.00)	1.740	(44.19)	791-08-0021	79108-0021	791-08-0071	79108-0071		79108-0121
46	1.732	(44.00)	1.818	(46.19)	791-08-0022	79108-0022	791-08-0072	79108-0072		79108-0122
48	1.811	(46.00)	1.897	(48.19)	791-08-0023	79108-0023	791-08-0073	79108-0073		79108-0123
50	1.890	(48.00)	1.976	(50.19)	791-08-0024	79108-0024	791-08-0074	79108-0074		79108-0124

ADD ASSY P/N FOR L/F EC NO: S2005-0004 DRAWN:SEE 2004/07/20 CHKD:ATSEE 2004/07/20 APPR:SKTOH 2004/07/22	QUALITY SYMBOLS ▽=0 ▽=0	GENERAL TOLERANCES (UNLESS SPECIFIED)	DIMENSION STYLE IN/MM	SCALE NTS	DESIGN UNITS INCH	THIRD ANGLE PROJECTION	
		4 PLACES ± --- ± --- 3 PLACES ± .010 ± --- 2 PLACES ± .015 ± 0.25 1 PLACE ± --- ± 0.38 ANGULAR ±1/2°	DRAWN BY AAB 1998/05/15	DATE 1998/05/15	TITLE SALES DRAWING 2MM DUAL ROW, FFC VERTICAL RECEPTACLE		
		DRAFT WHERE APPLICABLE MUST REMAIN WITHIN DIMENSIONS	CHECKED BY MJM 1998/05/15	DATE 1998/05/15	MOLEX INCORPORATED		
		SEE TABLE	APPROVED BY WAZ 1998/05/15	DATE 1998/05/15	DOCUMENT NO. SDA-79108-***	SHEET NO. 2 OF 4	

TIN OPTION

CKT. SIZE	DIM. "A"		DIM. "B"		PLATING OPTION 5		PLATING OPTION 4		PLATING OPTION 6	
	INCH	MM	INCH	MM	EDP NO.	ENG. NO.	EDP NO.	ENG. NO.	EDP NO.	ENG. NO.
04	.079	(2.00)	.165	(4.19)	791081001	79108-1001	791081051	79108-1051	NOT TOOLED	79108-1101
06	.157	(4.00)	.244	(6.19)	791081002	79108-1002	791081052	79108-1052		79108-1102
08	.236	(6.00)	.322	(8.19)	791081003	79108-1003	791081053	79108-1053		79108-1103
10	.315	(8.00)	.401	(10.19)	791081004	79108-1004	791081054	79108-1054		79108-1104
12	.394	(10.00)	.480	(12.19)	791081005	79108-1005	791081055	79108-1055		79108-1105
14	.472	(12.00)	.559	(14.19)	791081006	79108-1006	791081056	79108-1056		79108-1106
16	.551	(14.00)	.637	(16.19)	791081007	79108-1007	791081057	79108-1057		79108-1107
18	.630	(16.00)	.716	(18.19)	791081008	79108-1008	791081058	79108-1058		79108-1108
20	.709	(18.00)	.795	(20.19)	791081009	79108-1009	791081059	79108-1059		79108-1109
22	.787	(20.00)	.874	(22.19)	791081010	79108-1010	791081060	79108-1060		79108-1110
24	.866	(22.00)	.952	(24.19)	791081011	79108-1011	791081061	79108-1061		79108-1111
26	.945	(24.00)	1.031	(26.19)	791081012	79108-1012	791081062	79108-1062		79108-1112
28	1.024	(26.00)	1.110	(28.19)	791081013	79108-1013	791081063	79108-1063		79108-1113
30	1.102	(28.00)	1.188	(30.19)	791081014	79108-1014	791081064	79108-1064		79108-1114
32	1.181	(30.00)	1.267	(32.19)	791081015	79108-1015	791081065	79108-1065		79108-1115
34	1.260	(32.00)	1.346	(34.19)	791081016	79108-1016	791081066	79108-1066		79108-1116
36	1.338	(34.00)	1.425	(36.19)	791081017	79108-1017	791081067	79108-1067		79108-1117
38	1.417	(36.00)	1.504	(38.19)	791081018	79108-1018	791081068	79108-1068		79108-1118
40	1.496	(38.00)	1.582	(40.19)	791081019	79108-1019	791081069	79108-1069		79108-1119
42	1.575	(40.00)	1.661	(42.19)	791081020	79108-1020	791081070	79108-1070		79108-1120
44	1.654	(42.00)	1.740	(44.19)	791081021	79108-1021	791081071	79108-1071		79108-1121
46	1.732	(44.00)	1.818	(46.19)	791081022	79108-1022	791081072	79108-1072		79108-1122
48	1.811	(46.00)	1.897	(48.19)	791081023	79108-1023	791081073	79108-1073		79108-1123
50	1.890	(48.00)	1.976	(50.19)	791081024	79108-1024	791081074	79108-1074		79108-1124

ADD ASSY P/N FOR L/F EC NO: S2005-0004 DRAWN:SEE 2004/07/20 CHKD:ATSEE 2004/07/20 APPR:SKTOH 2004/07/22	QUALITY SYMBOLS ▽=0 ▽=0	GENERAL TOLERANCES (UNLESS SPECIFIED)		DIMENSION STYLE IN/MM		SCALE NTS	DESIGN UNITS INCH	THIRD ANGLE PROJECTION		
				mm	INCH	DRAWN BY AAB		DATE 1998/05/15		SALES DRAWING 2MM DUAL ROW, FFC VERTICAL RECEPTACLE MOLEX INCORPORATED
				4 PLACES ± ---	± ---	CHECKED BY MJM		DATE 1998/05/15		
				3 PLACES ± .010	± ---	APPROVED BY WAZ		DATE 1998/05/15		
		2 PLACES ± .015	± 0.25	MATERIAL NO.		DOCUMENT NO.				
		1 PLACE ± ---	± 0.38	DRAFT WHERE APPLICABLE MUST REMAIN WITHIN DIMENSIONS		SEE TABLE		SHEET NO. 3 OF 4		
		ANGULAR ±1/2°		THIS DRAWING CONTAINS INFORMATION THAT IS PROPRIETARY TO MOLEX INCORPORATED AND SHOULD NOT BE USED WITHOUT WRITTEN PERMISSION						

MOLDED VOID OPTION

CKT. SIZE	ASSEMBLY		VOID LOCATION(S) SEE SHEET 1 FOR CONVENTION		PLATING OPTION	DIM. "A"		DIM. "B"		PLATING OPTION
	EDP NO.	ENG. NO.	ROW	CKT. NO.(S)		INCH	MM	INCH	MM	
44	791-08-5001	79108-5001	ROW A	13	1	1.654 (42.00)	1.740 (44.19)	1.740 (44.19)	1.740 (44.19)	TIN/LEAD
44	791-08-5002	79108-5002	ROW B	10	1	1.654 (42.00)	1.740 (44.19)	1.740 (44.19)	1.740 (44.19)	
44	791085003	79108-5003	ROW A	13	4	1.654 (42.00)	1.740 (44.19)	1.740 (44.19)	1.740 (44.19)	TIN
44	791085004	79108-5004	ROW B	10	4	1.654 (42.00)	1.740 (44.19)	1.740 (44.19)	1.740 (44.19)	

NOTES:

1. TERMINALS WILL BE PRESENT IN VOIDED LOCATIONS HOWEVER, PIN WINDOWS WILL BE CLOSED.
2. VOIDS CAN ONLY BE PRESENT IN ONE ROW OF THE CONNECTOR.

ADD ASSY P/N FOR L/F EC NO: S2005-0004 DRAWN: SEE 2004/07/20 CHKD: ATSEE 2004/07/20 APPR: SKT0H 2004/07/22	QUALITY SYMBOLS ▽=0 ▽=0	GENERAL TOLERANCES (UNLESS SPECIFIED)		DIMENSION STYLE IN/MM		SCALE NTS	DESIGN UNITS INCH	THIRD ANGLE PROJECTION		
			mm	INCH	DRAWN BY RWB	DATE 1992/01/07	SALES DRAWING 2MM DUAL ROW, FFC VERTICAL RECEPTACLE MOLEX INCORPORATED			
		4 PLACES	± ---	± ---	CHECKED BY RWB	DATE 1992/01/07				
		3 PLACES	± .010	± ---	APPROVED BY JD	DATE 1992/01/07	DOCUMENT NO. SDA-79108-****		SHEET NO. 4 OF 4	
2 PLACES	± .015	± 0.25	DRAFT WHERE APPLICABLE MUST REMAIN WITHIN DIMENSIONS		SIZE A3		THIS DRAWING CONTAINS INFORMATION THAT IS PROPRIETARY TO MOLEX INCORPORATED AND SHOULD NOT BE USED WITHOUT WRITTEN PERMISSION			
1 PLACE	± ---	± 0.38								
		ANGULAR ±1/2°								