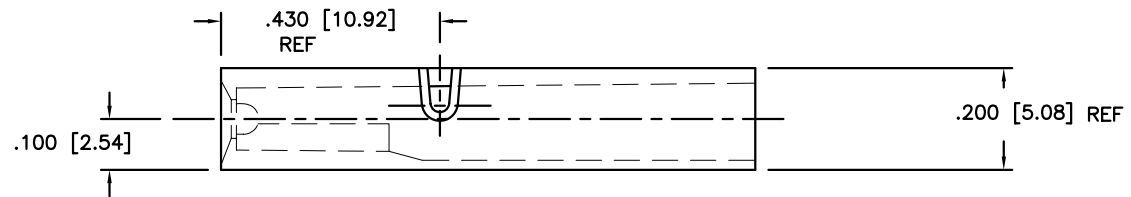
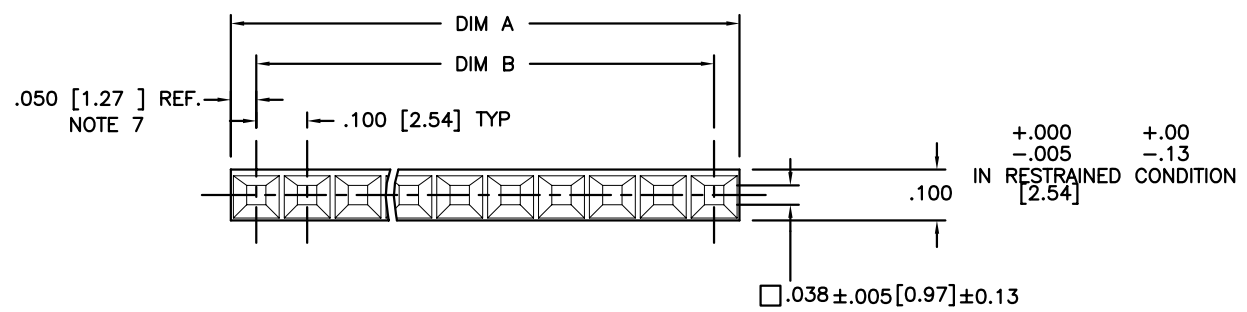
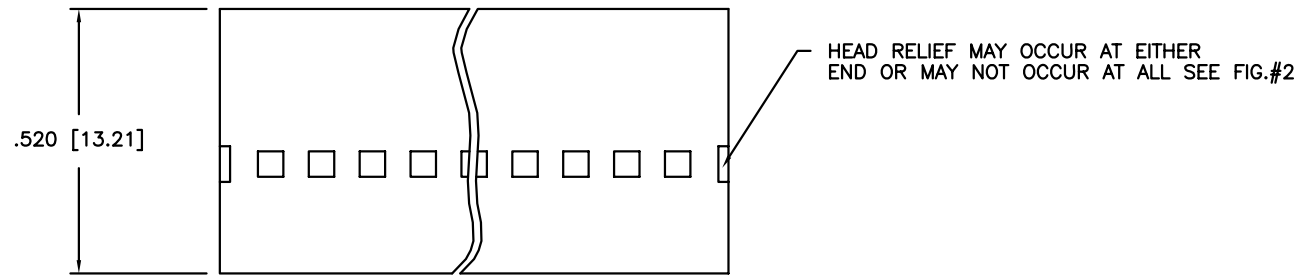


PRODUCT NO.
SEE TABLE



SCALE 6:1



Copyright FCJ

mat'l. code SEE NOTE 1 & 2				surface <input checked="" type="checkbox"/> tolerance		projection		product family PV HOUSINGS	
ltr	ecn no	dr	date	tolerances unless otherwise specified		title		MINI ROD HOUSING SR	
E	v51436	SAR	1/22/96	angles	linear	SEE NOTE 10		.100 [2.54] CC WITH RODS	
F	v90987	RGD	6/22/99			INCH/MM		dwg no 65272	
G	v05-0712	DAI	7/27/05	0°±2'		scale 3:1		sheet 1 of 3	
H	v06-0448	HTB	5/19/06	dr	S. ROYER	1/22/96		size A3	
				enr	T. HANNA	1/22/96		type Product Customer Drawing	
				chr	T. BREWBAKER	1/22/96			
				appd	T. HANNA	1/22/96			
sheet	revision	H	H	H	H	H	H	H	H
index	sheet	1	2	3					

PRODUCT NO. NOTE 8	NO. OF CAV.	DIM 'A'	DIM 'B'	NOTES & RESTRICTIONS	SPECIAL MARKINGS	CUSTOMER RESTRICTS.	RETENTION ROD INFO		
							ROD P/N	QTY	DIM 'C' REF.
65272-001	31	3.105 [78.87]	3.000 [76.20]	NOTE 6			65048-005	1	4.65 [118.11]
65272-002	30	3.005 [76.33]	2.900 [73.66]	NOTE 6			65048-013	1	3.45 [87.63]
65272-003	29	2.905 [73.79]	2.800 [71.12]	NOTE 6			65048-013	1	3.45 [87.63]
65272-004	28	2.805 [71.25]	2.700 [68.58]	NOTE 6			65048-013	1	3.45 [87.63]
65272-005	27	2.705 [68.71]	2.600 [66.04]	NOTE 6			65048-013	1	3.45 [87.63]
65272-006	26	2.605 [66.17]	2.500 [63.50]	NOTE 6			65048-013	1	3.45 [87.63]
65272-007	25	2.505 [63.63]	2.400 [60.96]	NOTE 6			65048-013	1	3.45 [87.63]
65272-008	24	2.405 [61.09]	2.300 [58.42]	NOTE 6			65048-013	1	3.45 [87.63]
65272-009	23	2.305 [58.55]	2.200 [55.88]	NOTE 6			65048-013	1	3.45 [87.63]
65272-010	22	2.205 [56.01]	2.100 [53.34]	NOTE 6			65048-013	1	3.45 [87.63]
65272-011	21	2.105 [53.47]	2.000 [50.80]	NOTE 6			65048-013	1	3.45 [87.63]
65272-012	20	2.005 [50.93]	1.900 [48.26]	NOTE 6			65048-013	1	3.45 [87.63]
65272-013	19	1.905 [48.39]	1.800 [45.72]	NOTE 6			65048-026	1	2.30 [58.42]
65272-014	18	1.805 [45.85]	1.700 [43.18]	NOTE 6			65048-026	1	2.30 [58.42]
65272-015	17	1.705 [43.31]	1.600 [40.64]	NOTE 6			65048-026	1	2.30 [58.42]
65272-016	16	1.605 [40.77]	1.500 [38.10]	NOTE 6			65048-026	1	2.30 [58.42]
65272-017	15	1.505 [38.23]	1.400 [35.56]	NOTE 6			65048-026	1	2.30 [58.42]
65272-018	14	1.405 [35.69]	1.300 [33.02]				65048-026	1	2.30 [58.42]
65272-019	13	1.305 [33.15]	1.200 [30.48]				65048-026	1	2.30 [58.42]
65272-020	12	1.205 [30.61]	1.100 [27.94]				65048-026	1	2.30 [58.42]
65272-021	11	1.105 [28.07]	1.000 [25.40]				65048-026	1	2.30 [58.42]
65272-022	10	1.005 [25.53]	.900 [22.86]				65048-026	1	2.30 [58.42]
65272-023	9	.905 [22.99]	.800 [20.32]				65048-040	1	1.30 [33.02]
65272-024	8	.805 [20.45]	.700 [17.78]				65048-040	1	1.30 [33.02]
65272-025	7	.705 [17.91]	.600 [15.24]				65048-040	1	1.30 [33.02]
65272-026	6	.605 [15.37]	.500 [12.70]				65048-040	1	1.30 [33.02]
65272-027	5	.505 [12.83]	.400 [10.16]				65048-040	1	1.30 [33.02]
65272-028	4	.405 [10.29]	.300 [7.62]				65048-040	1	1.30 [33.02]
65272-029	3	.305 [7.75]	.200 [5.08]				65048-040	1	1.30 [33.02]
65272-030	2	.205 [5.21]	.100 [2.54]				65048-040	1	1.30 [33.02]
65272-031	8	.805 [20.45]	.700 [17.78]		STYLE A	X	65048-040	1	1.30 [33.02]
65272-032	10	1.005 [25.53]	.900 [22.86]		STYLE B		65048-026	1	2.30 [58.42]
65272-033	8	.805 [20.45]	.700 [17.78]				65048-040	1	1.30 [33.02]
65272-034	6	.605 [15.37]	.500 [12.70]				65048-040	1	1.30 [33.02]



Copyright FCJ

mat'l. code SEE NOTE 1 & 2				surface <input checked="" type="checkbox"/> tolerance		projection		product family PV HOUSINGS		
ltr	ecr no	dr	date	tolerances unless otherwise specified		title		MINI ROD HOUSING SR		
H				angles	linear	INCH/MM		.100 [2.54] CC WITH RODS		
				SEE NOTE 10		scale 3:1		dwg no 65272 sheet 2 of 3 size A3		
				dr	S. ROYER	1/22/96			type Product Customer Drawing	
				engr	T. HANNA	1/22/96				
				chr	T. BREWBAKER	1/22/96				
				appd	T. HANNA	1/22/96				
sheet index	revision sheet									

PRODUCT NUMBER
SEE TABLE

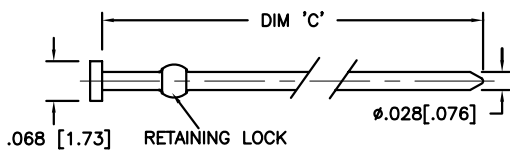


FIG. 1 RETENTION ROD DETAIL
SCALE 4:1

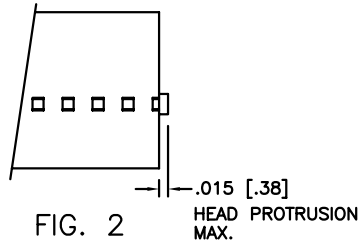


FIG. 2

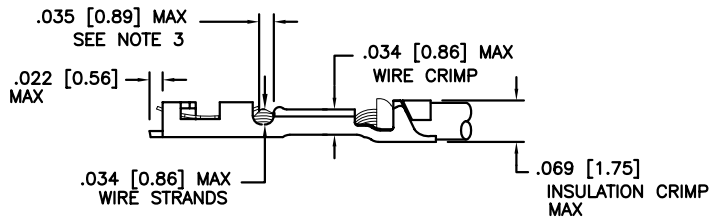
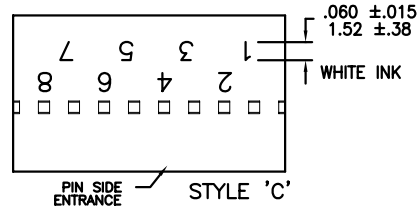
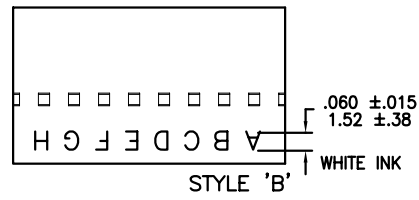
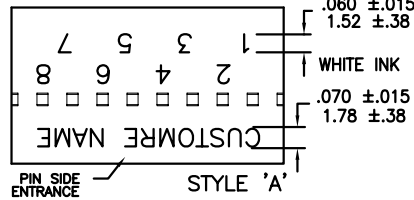


FIG. 3
RECOMMENDED
CRIMP INFORMATION
SCALE 4:1



NOTES:

- ① HOUSING MATERIAL: MODIFIED POLYPHENYLENE ETHER, FLAME RETARDANT PER UL 94V-0, COLOR: BLACK.
2. ROD MATERIAL: NYLON (NATURAL COLOR) SEE FIGURE #1 FOR DIMENSIONS.
- ③ TO MAKE PROPER CONTACT, ALL MALE PINS FOR EACH HOUSING MUST BE WITHIN $\pm 0.015/0.38$ IN LENGTH. MIN. PIN LENGTH IS .180/4.57.
4. MAX. WIRE CRIMP AND WIRE STRANDS ARE SHOWN IN FIGURE #3 SEE MINI PV™ TERMINAL SPECIFICATION TAO210 FOR CORRECT CRIMP HEIGHT FOR EACH WIRE SIZE. PRODUCT SPECIFICATION: BUS-12-067.
5. THIS HOUSING IS INTENDED FOR USE WITH MINI PV™ TERMINAL WITH 22-32 GAUGE WIRE, MEETING SPECIFICATIONS SHOWN IN FIG.#3.
- ⑥ HEAD RELIEF WILL OCCUR AT LEAST ONCE PER HOUSING ON THESE LISTINGS.
7. RETENTION RODS ARE INCLUDED WITH MINI ROD HOUSINGS. RODS TO BE TRIMMED AFTER INSERTION.
- ⑧ ADD AN LF SUFFIX TO PART NUMBERS FOR PRODUCT THAT MEETS EUROPEAN UNION DIRECTIVES AND OTHER COUNTRY REGULATIONS AS DESCRIBED IN GS-22-008.
9. THE PRODUCT IS NOT INTENDED TO BE EXPOSED TO MANUFACTURING SOLDER PROCESS.
- ⑩ STANDARD TOLERANCES:
 $.XX \pm .01 / .X \pm .3$
 $.XXX \pm .005 / .XX \pm .13$
 $.XXXX \pm .0020 / .XXX \pm .051$

mat'l. code SEE NOTE 1 & 2				surface <input checked="" type="checkbox"/> tolerance		projection		product family PV HOUSINGS	
ltr	ecr no	dr	date	tolerances unless otherwise specified				title	
H				angles	linear	SEE NOTE 10		MINI ROD HOUSING SR	
				0°±2'		INCH/MM		.100 [2.54] CC WITH RODS	
				dr	S. ROYER	1/22/96	scale	3:1	dwg no
				engr	T. HANNA	1/22/96			sheet 3 of 3
				chr	T. BREWBAKER	1/22/96	65272		size
				appd	T. HANNA	1/22/96	type		A3
sheet	revision						Product Customer Drawing		
index	sheet								