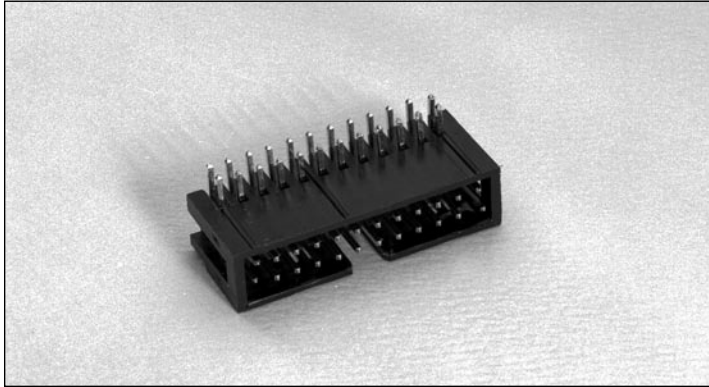


.100" (2.54mm) Dual Row, Through Hole, Right Angle, Polarizing Shrouded Header



9100 SERIES ("POST/BOXE")

PART NUMBER LEGEND

91XX-41-2XX-01

NUMBER OF POSITIONS
(SEE TABLE)

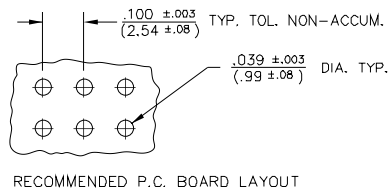
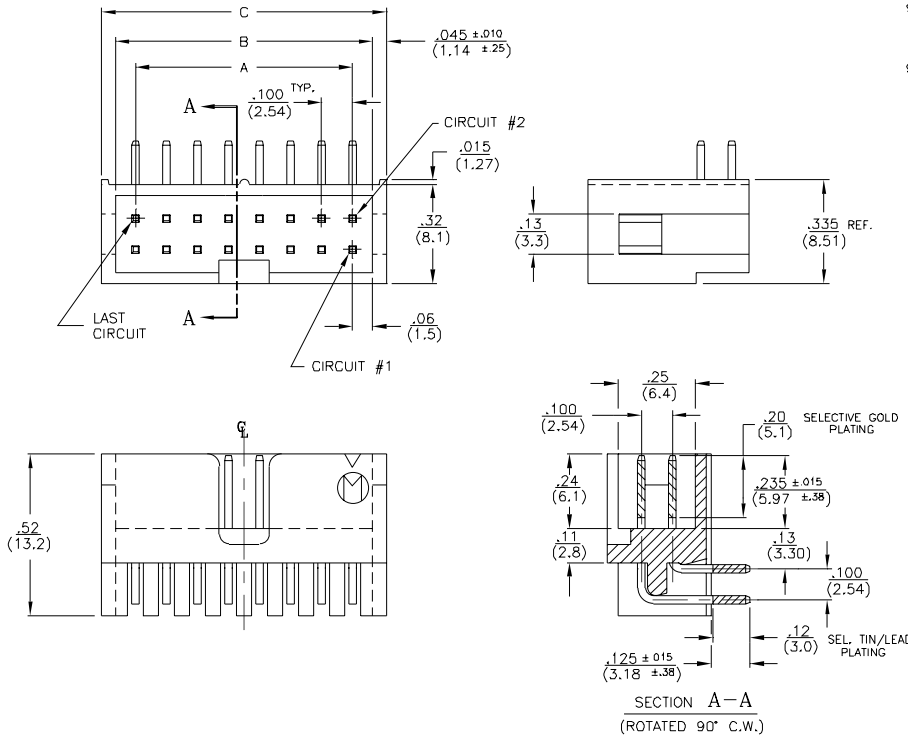
PIN PLATING
(SEE NOTE 3)

INSULATOR MATERIAL
(SEE NOTE 2)

MATING CONNECTORS: 9000 SERIES & 9300-6XX/7XX SERIES

NOTES:

- ALL DIMENSIONS ARE IN./.(MM.)
- INSULATOR MATERIAL : 9100-40-2XX-01; POLYESTER (PBT), 30% GLASS FILLED, UL94V-0
9110-40-2XX-01; POLYESTER (PCT), 30% GLASS FILLED, UL94V-0
- PIN MATERIAL : PHOSPHOR BRONZE.
- PIN FINISH :
9100 - TIN/LEAD OVER NICKEL PLATE.
9108 - .000050 NICKEL PLATE ALL OVER;
.000030 SELECTIVE GOLD IN MATING AREA, .0001-.0002 SEL. TIN/LEAD ON SOLDER TAIL.
910E - .000050 NICKEL PLATE ALL OVER;
.000015 SELECTIVE GOLD IN MATING AREA, .0001-.0002 SEL. TIN/LEAD ON SOLDER TAIL.



PART NO.	No OF CIRCUITS	A ±.005 (±.13)	B ±.010 (±.25)	C ±.010 (±.25)
910X-41-202-01	4	.100 (2.54)	.220 (5.59)	.210 (7.87)
↑ -203- ↓	6	.200 (5.08)	.320 (8.13)	.410 (10.41)
↑ -204- ↓	8	.300 (7.62)	.420 (10.67)	.510 (12.95)
↑ -205- ↓	10	.400 (10.16)	.520 (13.21)	.610 (15.49)
↑ -206- ↓	12	.500 (12.70)	.620 (15.75)	.710 (18.03)
↑ -207- ↓	14	.600 (15.24)	.720 (18.29)	.810 (20.57)
↑ -208- ↓	16	.700 (17.78)	.820 (20.83)	.910 (23.11)
↑ -209- ↓	18	.800 (20.32)	.920 (23.37)	1.010 (25.65)
↑ -210- ↓	20	.900 (22.86)	1.020 (25.91)	1.110 (28.19)
↑ -211- ↓	22	1.000 (25.40)	1.120 (28.45)	1.210 (30.73)
↑ -212- ↓	24	1.100 (27.94)	1.220 (30.99)	1.310 (33.27)
↑ -213- ↓	26	1.200 (30.48)	1.320 (33.53)	1.410 (35.81)
↑ -214- ↓	28	1.300 (33.02)	1.420 (36.07)	1.510 (38.35)
↑ -215- ↓	30	1.400 (35.56)	1.520 (38.61)	1.610 (40.89)
↑ -216- ↓	32	1.500 (38.10)	1.620 (41.15)	1.710 (43.43)
↑ -217- ↓	34	1.600 (40.64)	1.720 (43.69)	1.810 (45.97)
↑ -218- ↓	36	1.700 (43.18)	1.820 (46.23)	1.910 (48.51)
↑ -219- ↓	38	1.800 (45.72)	1.920 (48.77)	2.010 (51.05)
↑ -220- ↓	40	1.900 (48.26)	2.020 (51.31)	2.110 (53.59)
↑ -221- ↓	42	2.000 (50.80)	2.120 (53.85)	2.210 (56.13)
↑ -222- ↓	44	2.100 (53.34)	2.220 (56.39)	2.310 (58.67)
↑ -223- ↓	46	2.200 (55.88)	2.320 (58.93)	2.410 (61.21)
↑ -224- ↓	48	2.300 (58.42)	2.420 (61.47)	2.510 (63.75)
↑ -225- ↓	50	2.400 (60.96)	2.520 (64.01)	2.610 (66.29)
↑ -226- ↓	52	2.500 (63.50)	2.620 (66.55)	2.710 (68.83)
↑ -227- ↓	54	2.600 (66.04)	2.720 (69.09)	2.810 (71.37)
↑ -228- ↓	56	2.700 (68.58)	2.820 (71.63)	2.910 (73.91)
↑ -229- ↓	58	2.800 (71.12)	2.920 (74.17)	3.010 (76.45)
↑ -230- ↓	60	2.900 (73.66)	3.020 (76.71)	3.110 (78.99)
↑ -231- ↓	62	3.000 (76.20)	3.120 (79.25)	3.210 (81.53)
↑ -232- ↓	64	3.100 (78.74)	3.220 (81.79)	3.310 (84.07)
↑ -233- ↓	66	3.200 (81.28)	3.320 (84.33)	3.410 (86.61)
↑ -234- ↓	68	3.300 (83.82)	3.420 (86.87)	3.510 (89.15)
↑ -235- ↓	70	3.400 (86.36)	3.520 (89.41)	3.610 (91.69)
↑ -236- ↓	72	3.500 (88.90)	3.620 (91.95)	3.710 (94.23)
↑ -237- ↓	74	3.600 (91.44)	3.720 (94.49)	3.810 (96.77)
↑ -238- ↓	76	3.700 (93.98)	3.820 (97.03)	3.910 (99.31)
↑ -239- ↓	78	3.800 (96.52)	3.920 (99.57)	4.010 (101.85)
910X-41-240-01	80	3.900 (99.06)	4.020 (102.11)	4.110 (104.39)