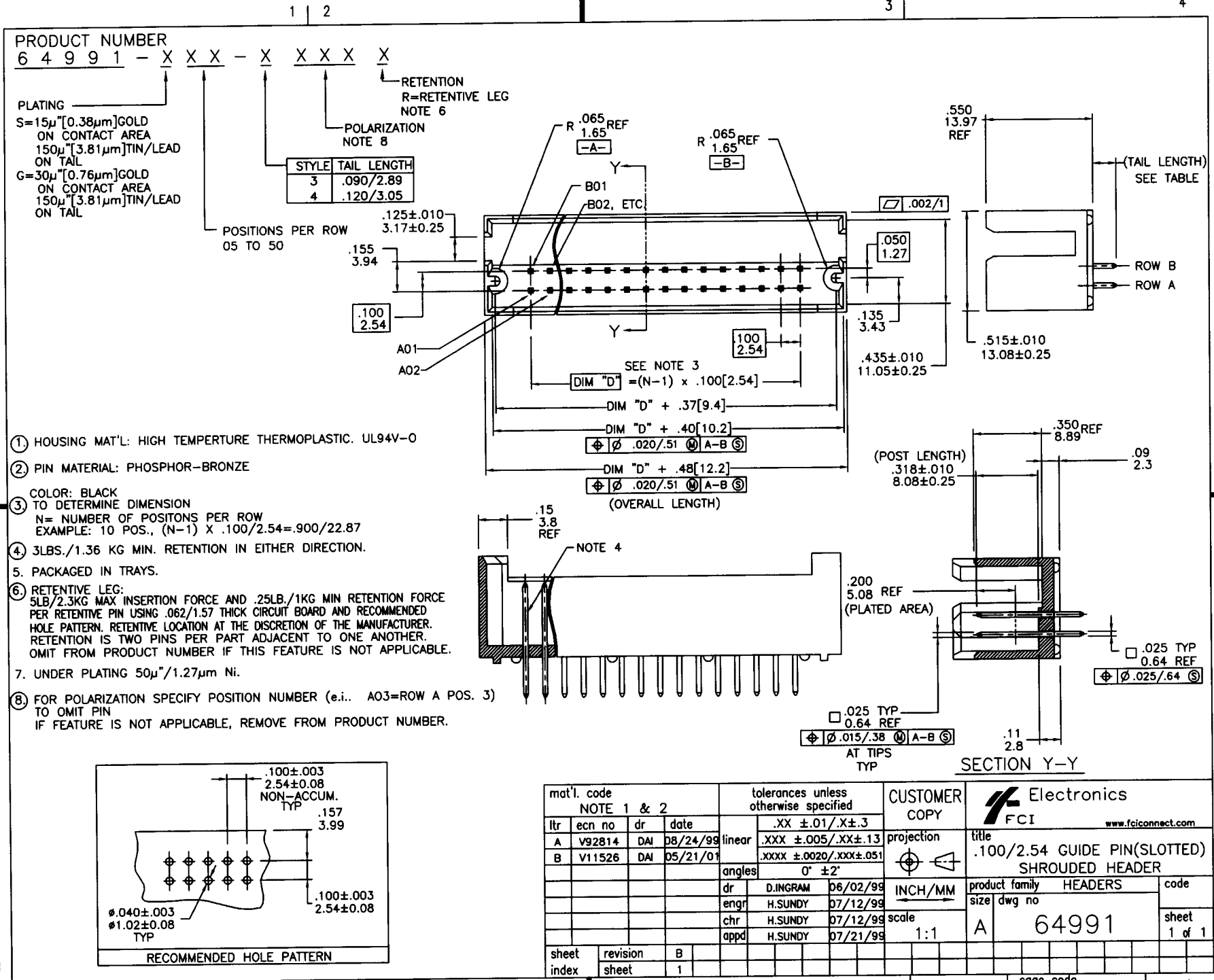


Tous droits strictement réservés. Reproduction ou communication a des tiers interdite sans quelque forme que ce soit sans autorisation écrite du propriétaire. Propriété de c FCI. Droits de reproduction FCI.

All rights strictly reserved. Reproduction or issue to third parties in any form whatever is not permitted without written authority from the proprietor. Property of FCI. Copyright FCI.



- ① HOUSING MAT'L: HIGH TEMPERATURE THERMOPLASTIC. UL94V-0
- ② PIN MATERIAL: PHOSPHOR-BRONZE
- ③ COLOR: BLACK TO DETERMINE DIMENSION
N= NUMBER OF POSITONS PER ROW
EXAMPLE: 10 POS., (N-1) X .100/2.54= .900/22.87
- ④ 3LBS./1.36 KG MIN. RETENTION IN EITHER DIRECTION.
5. PACKAGED IN TRAYS.
- ⑥ RETENTIVE LEG:
5LB/2.3KG MAX INSERTION FORCE AND .25LB./1KG MIN RETENTION FORCE PER RETENTIVE PIN USING .062/1.57 THICK CIRCUIT BOARD AND RECOMMENDED HOLE PATTERN. RETENTIVE LOCATION AT THE DISCRETION OF THE MANUFACTURER. RETENTION IS TWO PINS PER PART ADJACENT TO ONE ANOTHER. OMIT FROM PRODUCT NUMBER IF THIS FEATURE IS NOT APPLICABLE.
7. UNDER PLATING 50μ"/1.27μm Ni.
- ⑧ FOR POLARIZATION SPECIFY POSITION NUMBER (e.i.. A03=ROW A POS. 3) TO OMIT PIN
IF FEATURE IS NOT APPLICABLE, REMOVE FROM PRODUCT NUMBER.

mat'l. code		tolerances unless otherwise specified		CUSTOMER COPY	 FCI www.fciconnect.com
NOTE 1 & 2				projection	
ltr	ecn no	dr	date	.XX ±.01/.XX±.3	 title .100/2.54 GUIDE PIN(SLOTTED) SHROUDED HEADER
A	V92814	DAI	08/24/99	linear .XXX ±.005/.XX±.13	
B	V11526	DAI	05/21/01	.XXX ±.0020/.XXX±.051	product family HEADERS size dwg no 64991
				angles 0° ±2'	
				dr D.INGRAM 06/02/99	code sheet 1 of 1
				enrg H.SUNDY 07/12/99	
				chr H.SUNDY 07/12/99	scale 1:1
				appd H.SUNDY 07/21/99	
sheet index	revision sheet	B	1		

cage code
22526

ACAD

PDM: Rev:B

STATUS:Released

Printed: Apr 09, 2002