

REVISION Z

- NOTES:
1. $\text{\textcircled{C}}$ REPRESENTS A CRITICAL DIMENSION.
 2. BURR ALLOWANCE: .003[.08] MAX.
 3. PARTS TO BE MOLDED TO POSITION.
 4. MINIMUM PULLOUT FORCE: 5 lbf[22.24 N].
 5. CONTACT MUST BE INSERTED UNTIL RETENTION FEATURE LOCKS INTO PLACE.
 6. ALL FINISHED GOODS ARE TO BE LAYER PACKAGED IN SHIPPING.
 7. **ONLY AVAILABLE IN TIN PLATING.**
 8. ALL PARTS TO PASS ELECTRICAL TEST UPON ASSEMBLY (INCLUDING HI-POT TEST AT 1000 VOLTS DC). AFTER FINAL ELECTRICAL TEST, LABEL EACH ASSEMBLY WITH 1 LABEL-ET STAMP ON THE BODY.
 9. APPLICATIONS INVOLVING SEVERE BENDING REQUIRE 6" MINIMUM CABLE LENGTH.
 10. REFER TO CRIMP SPECIFICATIONS PRINT FOR CRIMP AND STRIP DIMENSIONS, TOLERANCES, TOOLING AND ITS REQUIREMENTS.
 11. NOTE DELETED.
 12. FOR LENGTHS LESS THAN 12 IN, TOLERANCE SHALL BE $\pm .125$ [3.18]. FOR OTHER LENGTHS, TOLERANCES SHALL BE $\pm 2\%$.
 13. AVAILABLE TO EXISTING CUSTOMERS ONLY. DO NOT DESIGN IN AS OF REVISION H.
 14. -203 USES 20 GAGE 300 VOLT CABLE.
 15. AVAILABLE ONLY AS AN ASO.
 16. -206 USES 20 GAGE 600 VOLT CABLE.
 17. AVAILABLE TO EXISTING CUSTOMERS ONLY. DO NOT DESIGN AS OF REVISION T.
 18. ASSEMBLIES USING THE FEP OPTION ARE FOR CRIMP APPLICATIONS ONLY.

PMSSX-XX-XXXX-X-XX.XX-X-XXX

- FEP CABLE OPTION**
 -T: FEP INSULATION (LEAVE BLANK FOR STANDARD PVC INSULATION) (SEE NOTE 18)
- No OF POSITIONS**
 -02 THRU -10
- WIRE GAUGE (AWG)**
 [SEE TABLE 1]
 PVC: -16, -18, -206, -203, -22, -24
 FEP: -18, -24
- WIRE COLOR**
 LEAVE BLANK FOR ALL BLACK WIRE
 C: COLOR CODED WIRE (SEE COLOR SEQUENCE TABLE, SHEET 2) (NOT AVAILABLE WITH FEP OPTION)
- LEAD STYLE**
 -SP: STANDARD POWER (C-169-XX-SP-T) *(SEE NOTE 17)
 -HP: HIGH POWER (C-169-XX-HP-T) *(SEE NOTE 13)
- OPTION**
SINGLE
 -M: METAL LATCH (USE IPBD-XX-D-M) (LEAVE BLANK FOR PLASTIC)
DOUBLE
 -LUS: PLASTIC LATCH UP, STRAIGHT (SEE FIG.3, SHEET 2)
 -LDS: PLASTIC LATCH DOWN, STRAIGHT (SEE FIG.4, SHEET 2)
 -MUS: METAL LATCH UP, STRAIGHT
 -MDS: METAL LATCH DOWN, STRAIGHT
- END OPTION**
 -S: SINGLE END
 -D: DOUBLE END (MUST CHOOSE LUS, LDS, MUS, OR MDS OPTIONS)
- ASSEMBLED LENGTH**
 SPECIFY IN INCHES (.03.00 INCH MINIMUM) [USE DWCX-XX-XX-XXX]

DO NOT SCALE FROM THIS PRINT

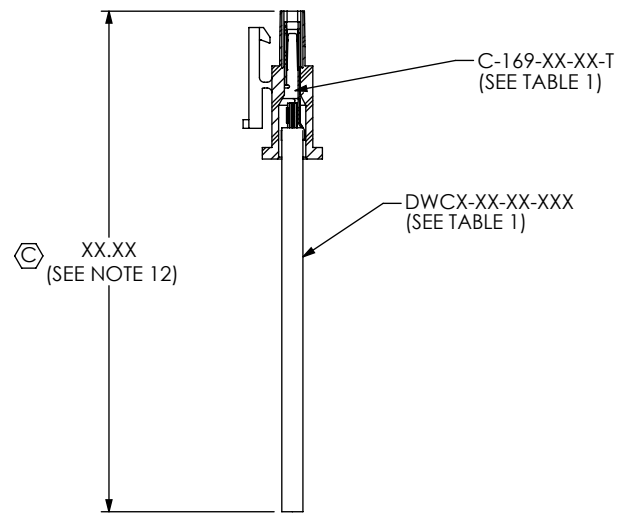
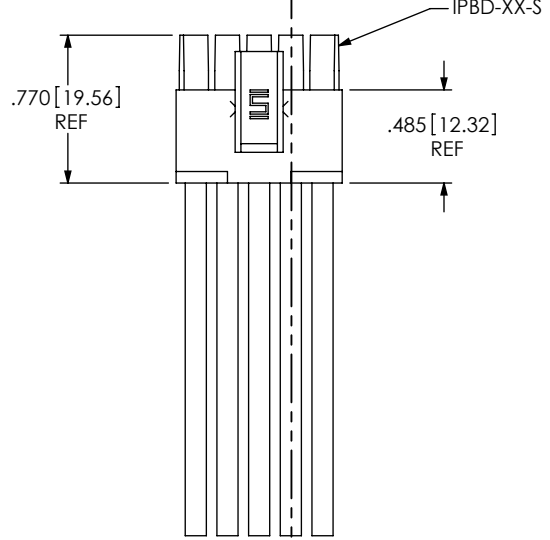
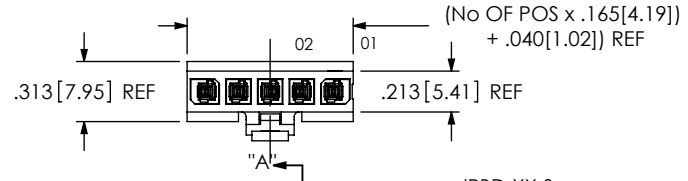


FIG 2
 PMSSX-05-XXXX-X-XX.XX-D-LUS SHOWN [DIFFERENT AS SHOWN, OTHERWISE SAME AS FIG 1]

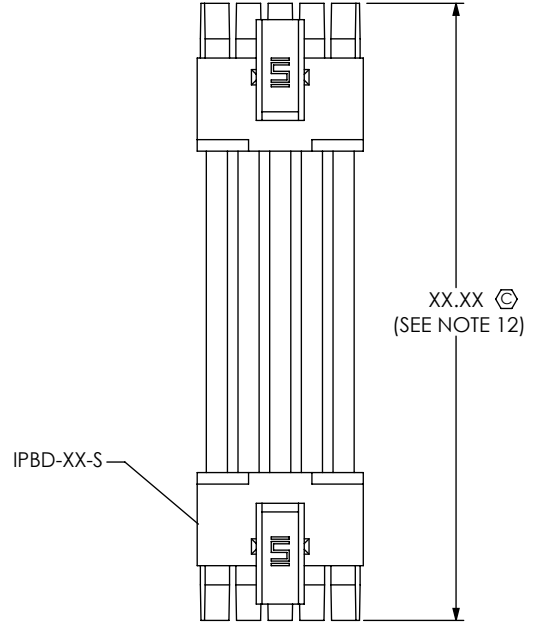


TABLE 1

SERIES	CABLE AWG	CABLE	CONTACT
PMSS	16 AWG	DWC-16-XX-600	C-169-03-XX-T
PMSS	18 AWG	DWC-18-XX-600	C-169-03-XX-T
PMSS	206 AWG (SEE NOTE 16)	DWC-20-XX-600	C-169-03-XX-T
PMSS	203 AWG (SEE NOTE 14 + 15)	DWC-20-XX-300	C-169-02-XX-T
PMSS	22 AWG	DWC-22-XX-300	C-169-02-XX-T
PMSS	24 AWG	DWC-24-XX-300	C-169-02-XX-T
PMSST	18 AWG	DWCT-18-01-TC	C-169-03-XX-T
PMSST	24 AWG	DWCT-24-01-TC	C-169-04-XX-T

UNLESS OTHERWISE SPECIFIED, DIMENSIONS ARE IN INCHES.
 TOLERANCES ARE:
 DECIMALS ANGLES
 .XX: $\pm .01$ [.3] 2°
 .XXX: $\pm .005$ [.13]
 .XXXX: $\pm .0020$ [.051]

MATERIAL: DO NOT SCALE DRAWING SHEET SCALE: 1:1
 HOUSING: VALOX 457, COLOR: NATURAL
 CONTACT: PHOS BRONZE
 CABLE: INSULATION: SEE CALLOUT
 WIRE: SEE CABLE PRINT (NOT LEAD FREE)

F:\DWG\MISC\MKTG\PMSSX-XX-XXXX-X-XX.XX-X-XXX-MKT.SLDDRW

PROPRIETARY NOTE
 THIS DOCUMENT CONTAINS INFORMATION CONFIDENTIAL AND PROPRIETARY TO SAMTEC, INC. AND SHALL NOT BE REPRODUCED OR TRANSFERRED TO OTHER DOCUMENTS OR DISCLOSED TO OTHERS OR USED FOR ANY PURPOSE OTHER THAN THAT WHICH IT WAS OBTAINED WITHOUT THE EXPRESSED WRITTEN CONSENT OF SAMTEC, INC.

samtec

520 PARK EAST BLVD, NEW ALBANY, IN 47150
 PHONE: 812-944-6733 FAX: 812-948-5047
 e-Mail: info@SAMTEC.com code 55322

DESCRIPTION:
 .165[4.19] SOCKET DISCRETE CABLE ASSEMBLY

DWG. NO.
PMSSX-XX-XXXX-X-XX.XX-X-XXX

BY: DEAN P 04/14/2005 SHEET 1 OF 3

FIG 3

PMSSX-05-XXXX-X-XX.XX-D-LUS SHOWN
 [DIFFERENT AS SHOWN, OTHERWISE SAME AS FIG 1]

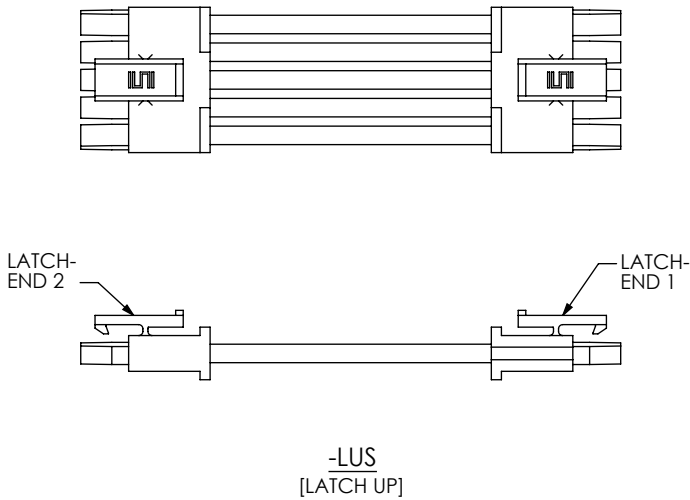
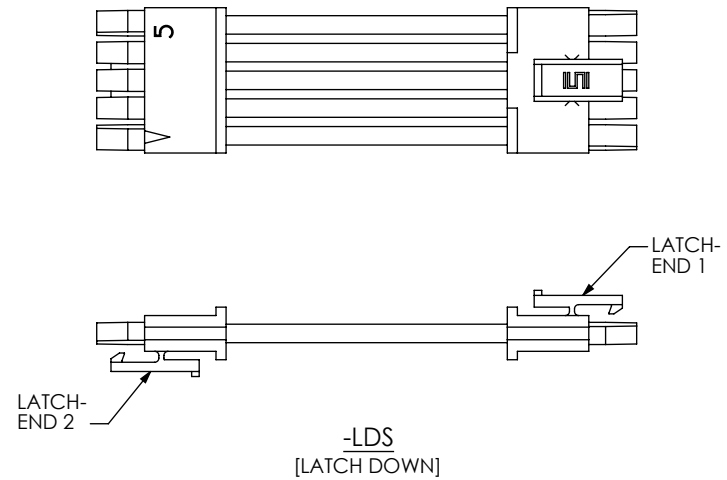


FIG 4

PMSSX-05-XXXX-X-XX.XX-D-LDS SHOWN
 [DIFFERENT AS SHOWN, OTHERWISE SAME AS FIG 1]



PMSS color coded wire sequence

pin#	color									
	brown	red	orange	yellow	green	blue	violet	gray	white	black
	1	2	3	4	5	6	7	8	9	10

PROPRIETARY NOTE

THIS DOCUMENT CONTAINS INFORMATION CONFIDENTIAL AND PROPRIETARY TO SAMTEC, INC. AND SHALL NOT BE REPRODUCED OR TRANSFERRED TO OTHER DOCUMENTS OR DISCLOSED TO OTHERS OR USED FOR ANY PURPOSE OTHER THAN THAT WHICH IT WAS OBTAINED WITHOUT THE EXPRESSED WRITTEN CONSENT OF SAMTEC, INC.

DO NOT SCALE DRAWING

SHEET SCALE: 0.875:1



520 PARK EAST BLVD., NEW ALBANY, IN 47150
 PHONE: 812-944-6733 FAX: 812-948-5047
 e-Mail info@SAMTEC.com code 55322

DESCRIPTION:
 .165[4.19] SOCKET DISCRETE CABLE ASSEMBLY

DWG. NO.
 PMSSX-XX-XXXX-X-XX.XX-X-XXX

BY: DEAN P 04/14/2005 SHEET 2 OF 3

FIG 5
 (PMSSX-08-XXXX-X-XX.XX-S-M SHOWN)
 (SAME AS FIG 1, UNLESS OTHERWISE STATED)

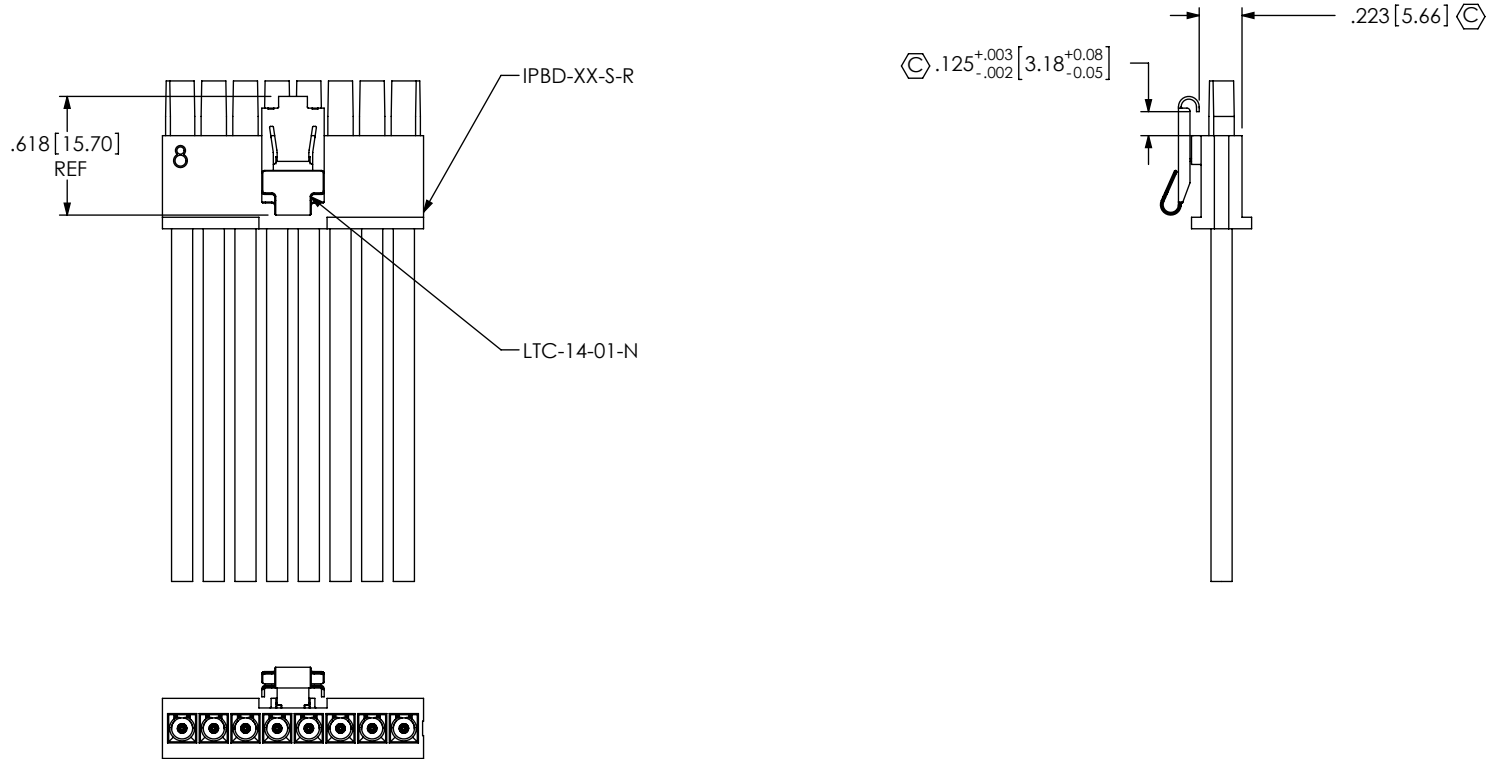
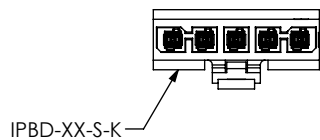



FIG 6
 -K: KEYED POLARIZATION
 (PMSSX-05-XXXX-K-XX.XX-X-XXX SHOWN)
 (SAME AS FIG 1, UNLESS OTHERWISE STATED)



<p>PROPRIETARY NOTE</p> <p>THIS DOCUMENT CONTAINS INFORMATION CONFIDENTIAL AND PROPRIETARY TO SAMTEC, INC. AND SHALL NOT BE REPRODUCED OR TRANSFERRED TO OTHER DOCUMENTS OR DISCLOSED TO OTHERS OR USED FOR ANY PURPOSE OTHER THAN THAT WHICH IT WAS OBTAINED WITHOUT THE EXPRESSED WRITTEN CONSENT OF SAMTEC, INC.</p> <p>DO NOT SCALE DRAWING</p> <p>SHEET SCALE: 1:1</p>	
	<p>520 PARK EAST BLVD, NEW ALBANY, IN 47150 PHONE: 812-944-6733 FAX: 812-948-5047 e-Mail info@SAMTEC.com code 55322</p>
	<p>DESCRIPTION: .165[4.19] SOCKET DISCRETE CABLE ASSEMBLY</p>
	<p>DWG. NO. PMSSX-XX-XXXX-X-XX.XX-X-XXX</p>
<p>BY: DEAN P 04/14/2005</p>	<p>SHEET 3 OF 3</p>