

NOTES:

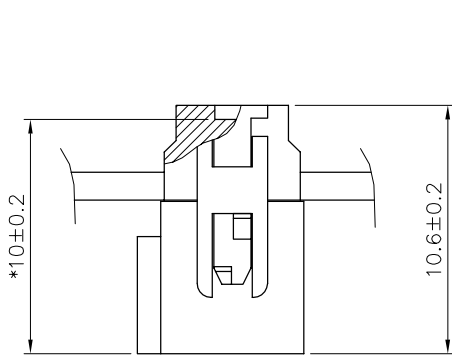
- MATERIAL: BASE AND COVER: 30% GLASS FILLED POLYESTER FLAME RETARDANT PER UL-94-V0 COLOUR GREY STRAIN RELIEF: UNREINFORCED THERMOPLASTIC FLAME RETARDANT PER UL-94-V0 COLOUR GREY CONTACT: BERYLLIUM COPPER
- PLATING: 0.4 μm Au OVER 1.27 μm Ni IN CONTACT AREA REMAINDER OF PRODUCT (IDC PART) 1.27 μm Ni
- TRIANGLE NOT MOLDED-IN ON 2x2 AND 2x3 POSITIONS WITH CENTRAL KEY

CUSTOMER COPY FOR REFERENCE ONLY

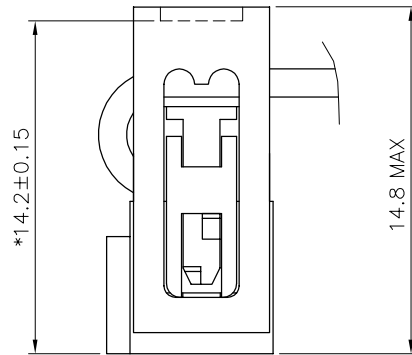
mat'l. code		SEE NOTES		tolerances unless otherwise specified		CUSTOMER COPY			
ltr	ecr no	dr	date	linear		projection	QUICKIE III FEM 0.4 μm Au		
N	F30320	OMA	93.03.30				product family	QKIE FEM	code
P	F10566	DLE	01.10.24				size	dwg no	213
R	F20556	DLE	02.10.11	angles		mm [inch]	77335	sheet	
S	F03019	DLE	03.01.23	dr	VAUTHIER	91.10.31	scale	5:1	1 of 3
				enr	JM PHAMVAN	93.03.30			
				chr	O MATHEVON	93.03.30			
				app	JM P	93.03.30			
sheet	revision	S	R	R					
index	sheet	1	2	3					

PRODUCT NUMBER	SIZE	DIM "A"	DIM "B"	DIM "C"	DIM "S"	SLOT STYLE
77335-X04	2x 2	9.54	2.54	9.46	5.66	NO SLOT
77335-X06	2x 3	12.08	5.08	12.00	8.20	RIGHT IF NO KEY
77335-X08	2x 4	14.62	7.62	14.54	10.74	RIGHT IF NO KEY
77335-X10	2x 5	17.16	10.16	17.08	13.28	RIGHT SLOT
77335-X14	2x 7	22.24	15.24	22.16	18.36	RIGHT SLOT
77335-X16	2x 8	24.78	17.78	24.70	20.90	2 SLOTS
77335-X18	2x 9	27.32	20.32	27.24	23.44	2 SLOTS
77335-X20	2x 10	29.86	22.86	29.78	25.98	2 SLOTS
77335-X24	2x 12	34.94	27.94	34.85	31.06	2 SLOTS
77335-X26	2x 13	37.48	30.48	37.40	33.60	2 SLOTS
77335-X30	2x 15	42.56	35.56	42.48	38.68	2 SLOTS
77335-X34	2x 17	47.64	40.64	47.56	43.76	2 SLOTS
77335-X40	2x 20	55.26	48.26	55.18	51.38	2 SLOTS
77335-X44	2x 22	60.34	53.34	60.26	56.46	2 SLOTS
77335-X50	2x 25	67.96	60.96	67.88	64.08	2 SLOTS
77335-X60	2x 30	80.66	73.66	80.58	76.78	2 SLOTS
77335-X64	2x 32	85.74	78.74	85.66	81.86	2 SLOTS

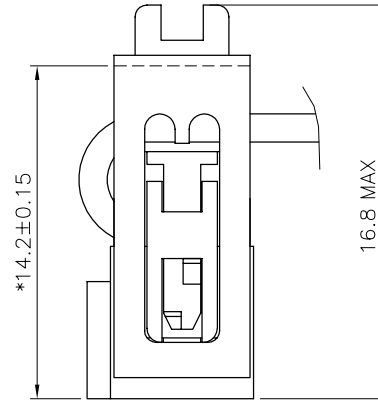
AFTER TERMINATION SIDE VIEW OF ASSEMBLY (* LATCHING DIM ON HEADER)



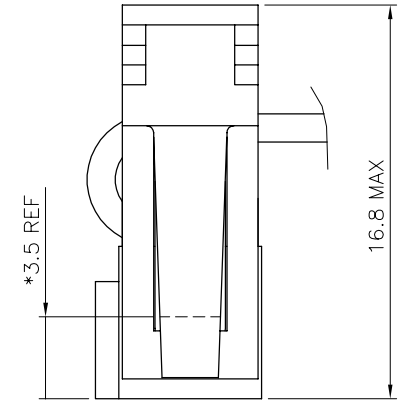
WITHOUT STRAIN RELIEF



WITH LOW PROFILE STRAIN RELIEF



WITH STANDARD STRAIN RELIEF



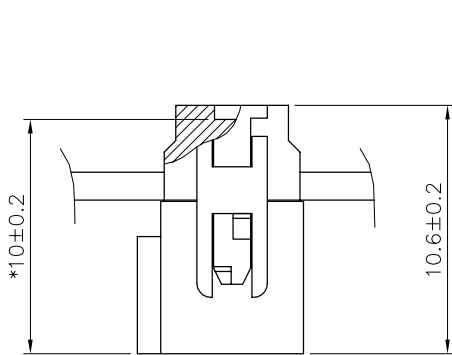
WITH LATCHING STRAIN RELIEF

77335-814	●						●	
77335-7YY		●					●	
77335-6YY	●						●	
77335-5YY		●			●			504 530
77335-4YY		●			●			
77335-3YY		●		●				304
77335-2YY	●				●			204 230
77335-1YY	●				●			
77335-0YY	●			●				004
PRODUCT NUMBER	WITH CENTRAL KEY	WITHOUT CENTRAL KEY	STANDARD	WITHOUT STRAIN RELIEF	LOW PROFILE	LATCHING	STANDARD FULL	DASHES NOT AVAILABLE

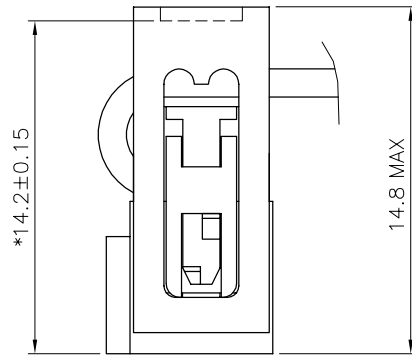
mat'l. code		tolerances unless otherwise specified		CUSTOMER COPY		FCI ELECTRONICS	
ltr	ecp no	dr	date	linear	projection	title	www.fciconnect.com
N	F30320	OMA	93.03.30			QUICKIE III FEM	
P	F10566	DLE	01.10.24			0.4 μm Au	
R	F03019	DLE	03.01.23	angles		product family	code
					mm [inch]	QKIE FEM	213
		dr	VAUTHIER	91.10.31		size	dwg no
		engn	JM PHAMVAN	93.03.30	scale	A2	77335
		chr	O MATHEVON	93.03.30	N/A		sheet
		appd	JM P	93.03.30			2 of --
sheet index	revision sheet						

PRODUCT NUMBER	SIZE	DIM "A"	DIM "B"	DIM "C"	DIM "S"	SLOT STYLE
77335-X04B	2x 2	9.54	2.54	9.46	5.66	NO SLOT
77335-X06B	2x 3	12.08	5.08	12.00	8.20	RIGHT IF NO KEY
77335-X08B	2x 4	14.62	7.62	14.54	10.74	RIGHT IF NO KEY
77335-X10B	2x 5	17.16	10.16	17.08	13.28	RIGHT SLOT
77335-X14B	2x 7	22.24	15.24	22.16	18.36	RIGHT SLOT
77335-X16B	2x 8	24.78	17.78	24.70	20.90	2 SLOTS
77335-X18B	2x 9	27.32	20.32	27.24	23.44	2 SLOTS
77335-X20B	2x 10	29.86	22.86	29.78	25.98	2 SLOTS
77335-X24B	2x 12	34.94	27.94	34.85	31.06	2 SLOTS
77335-X26B	2x 13	37.48	30.48	37.40	33.60	2 SLOTS
77335-X30B	2x 15	42.56	35.56	42.48	38.68	2 SLOTS
77335-X34B	2x 17	47.64	40.64	47.56	43.76	2 SLOTS
77335-X40B	2x 20	55.26	48.26	55.18	51.38	2 SLOTS
77335-X44B	2x 22	60.34	53.34	60.26	56.46	2 SLOTS
77335-X50B	2x 25	67.96	60.96	67.88	64.08	2 SLOTS
77335-X60B	2x 30	80.66	73.66	80.58	76.78	2 SLOTS
77335-X64B	2x 32	85.74	78.74	85.66	81.86	2 SLOTS

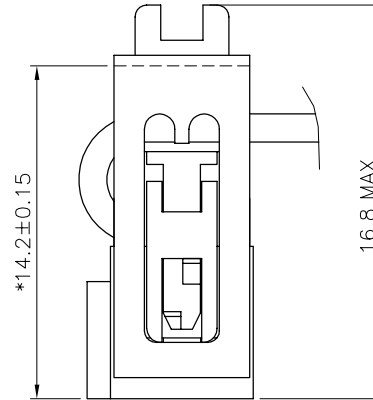
AFTER TERMINATION SIDE VIEW OF ASSEMBLY (* LATCHING DIM ON HEADER)



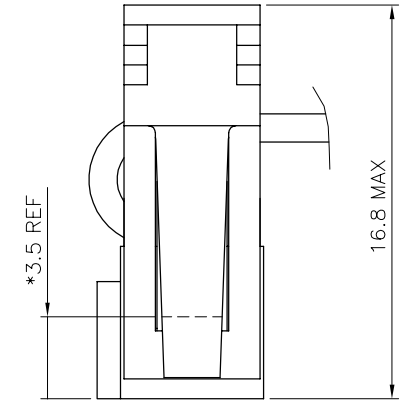
WITHOUT STRAIN RELIEF



WITH LOW PROFILE STRAIN RELIEF



WITH STANDARD STRAIN RELIEF



WITH LATCHING STRAIN RELIEF

77335-7YYB		●				●	724
77335-6YYB	●					●	624
77335-5YYB		●			●		504 524 530
77335-4YYB		●		●			
77335-3YYB		●	●				304
77335-2YYB	●				●		204 224 230
77335-1YYB	●				●		
77335-0YYB	●		●				004
PRODUCT NUMBER	WITH CENTRAL KEY	WITHOUT CENTRAL KEY	STANDARD STRAIN RELIEF	WITHOUT STRAIN RELIEF	LOW PROFILE STRAIN RELIEF	LATCHING STRAIN RELIEF	DASHES NOT AVAILABLE

NOTE:
4 CODE FOR YEAR AND WEEK OF MANUFACTURING

mat'l. code		tolerances unless otherwise specified		CUSTOMER COPY	FCI ELECTRONICS	
lfr	ecn no	dr	date	projection	title	www.fciconnect.com
N	F30320	OMA	93.03.30			
P	F10566	DLE	01.10.24			
R	F03019	DLE	03.01.23			
				mm [inch]	product family	code
					QKIE FEM	213
				scale	size	sheet
				N/A	A2	3 of 3
sheet index	revision sheet					