

SPECIFICATIONS

D-SUB Connector

Mechanical

Contact Mating Force: 8.5kg (18.7Lb) max.
Contact Unmating Force: 0.5kg (1.1Lb) min.
Contact Retention Force: 1.82kg (4.0Lb) min.

DT Series

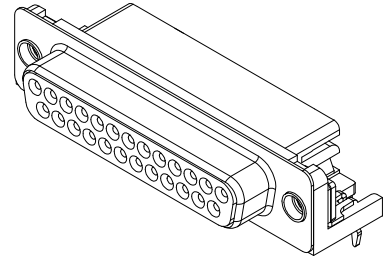
Right Angle Type, T/H
2.77mm [.109"] Pitch
25 Pos.

Electrical

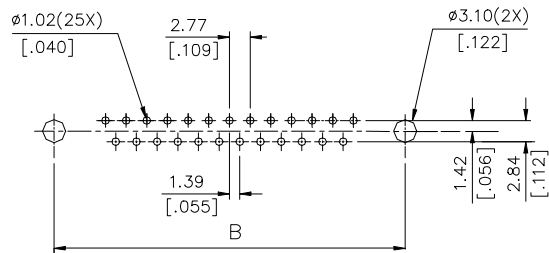
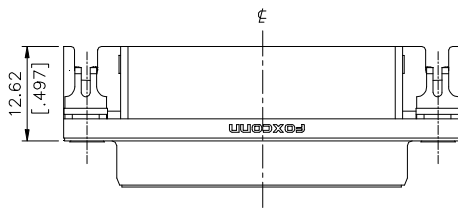
Current Rating: 2.0A
Contact Resistance: 35mW max.
Dielectric Withstanding Voltage: 1000V AC/1min min.
Insulation Resistance: 5000MW

Physical

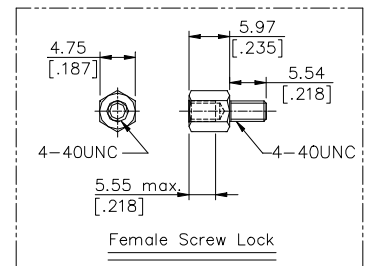
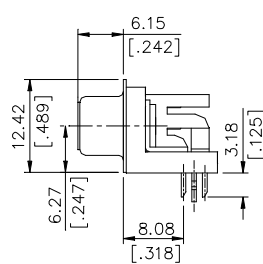
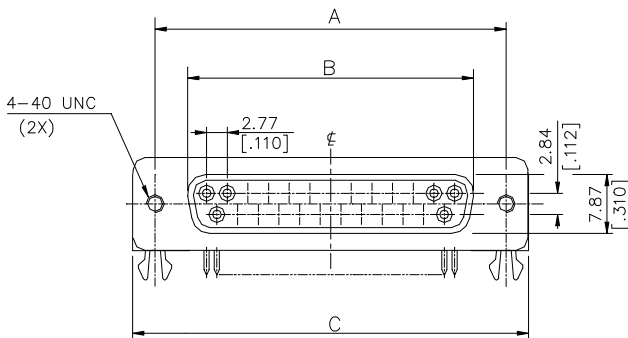
Housing: Thermoplastic, UL 94V-0 rated in Pantone 235C
Contact: Copper alloy
Plating: See "ORDERING INFORMATION"
Solder Pad: Copper alloy
Operating Temperature: -55 to +105



DRAWING

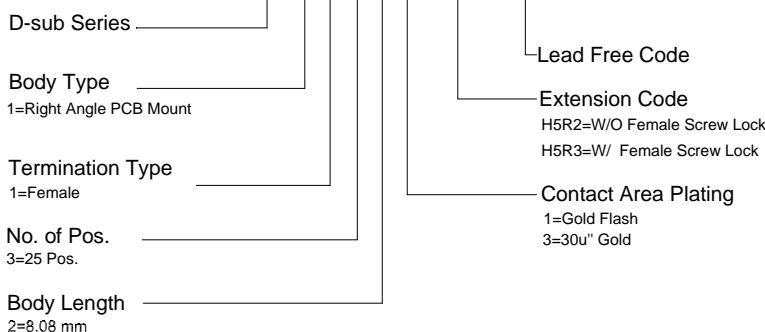


RECOMMENDED P.C.B. LAYOUT



ORDERING INFORMATION

PRODUCT NO.: DT 1 1 3 2 *- H5R*- 4F



DT1132*	47.04 [1.852]	38.35 [1.510]	53.04 [2.088]
P/N	DIM. A	DIM. B	DIM. C