

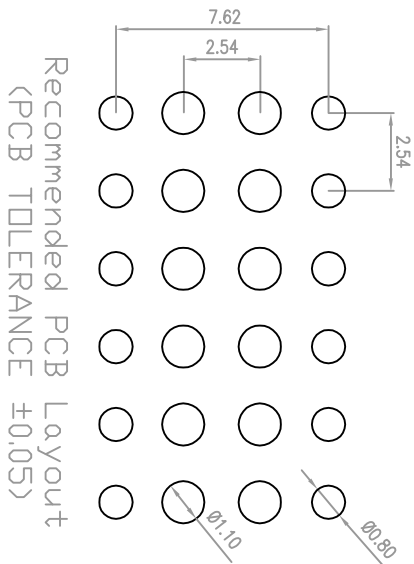
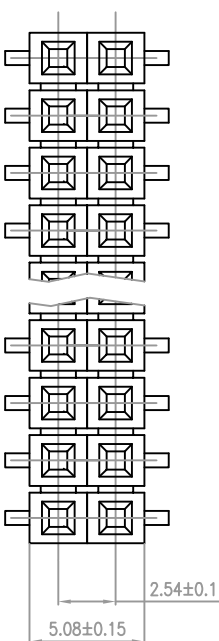
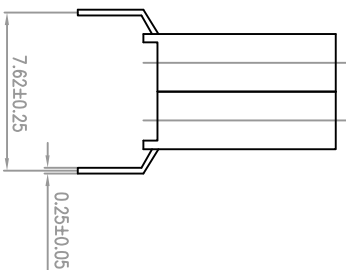
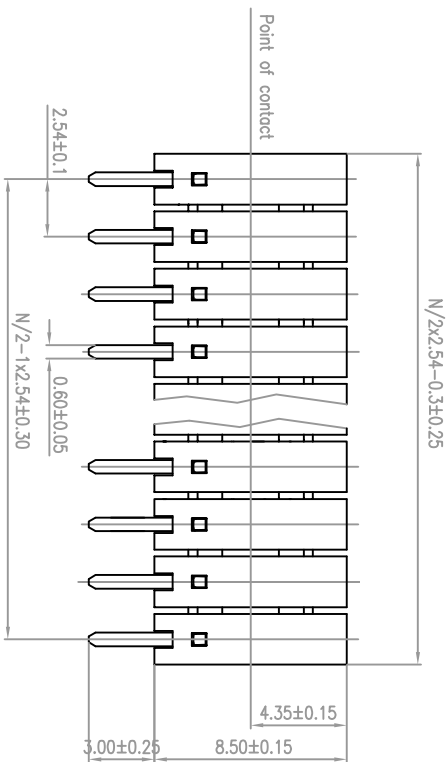
**TECHNICAL DATA**

**Electrical**

Current Rating: 3A maxi  
 Dielectric withstanding: 500V AC for one minute  
 Insulation resistance: 5000MΩmini  
 Contact resistance: 20mΩ max

**Mechanical**

Temperature rating: -40° to +105°C  
 Soldering Temperature: 230°C/30-60 sec  
 260°C/10 sec



Kontek - Comatel

Note

INDEX	DATE	DESCRIPTION

**TOLERANCES FOR FREE DIMENSIONS**

ANGULAR VALUES	> 6	> 10	> 18	> 30	> 50	> 80	> 120	> 180	> 250
from 0.5° to 3°	> 3	< 6	< 10	< 18	< 30	< 50	< 80	< 120	< 180
> 3°	< 6	< 10	< 18	< 30	< 50	< 80	< 120	< 180	< 250
± 30°	+0.125	+0.150	+0.180	+0.215	+0.260	+0.310	+0.370	+0.435	+0.500
	-0.050	-0.060	-0.075	-0.090	-0.110	-0.130	-0.150	-0.175	-0.210

Housing: LCP U94V-0	UNIT: mm
Contact: Phosphore bronze	general tolerance X: ±0.25mm
Platings: Y= 4: TIN 4µm	Date: 04-07-08
Y= 7: SELECTIVE GOLD flash	Design Gambino L.
Y= 1: Gold flash	Contr.
Protection:	

Denomination Female headers straight

pitch 2.54mm, double row.

XX=N=Number of contacts (04+90)

Cod. 47782041XX4Y0

File: 47782041XX4Y0

Dis. Nr.

index  
 L L L L L L L L A



A	05-09-08	Update overall dimension, update number of contact, update PCB hole
INDEX	DATA	MODIFICA