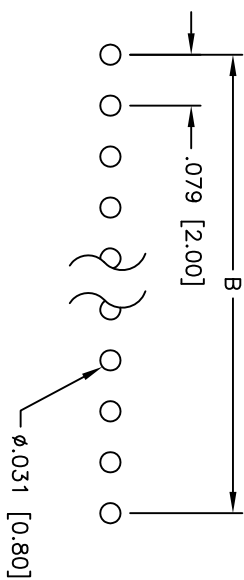
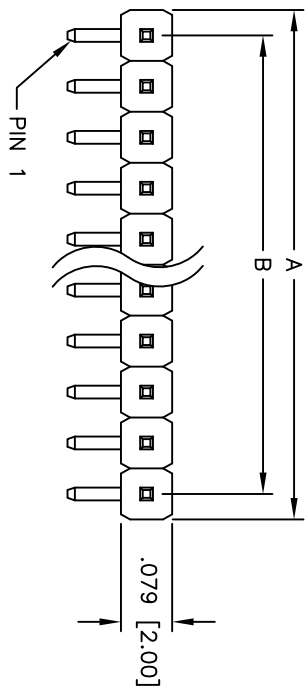
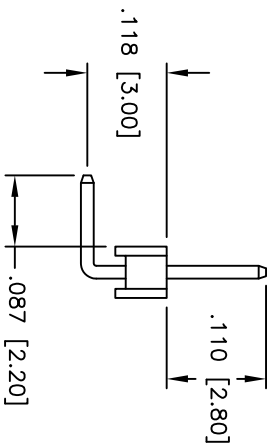
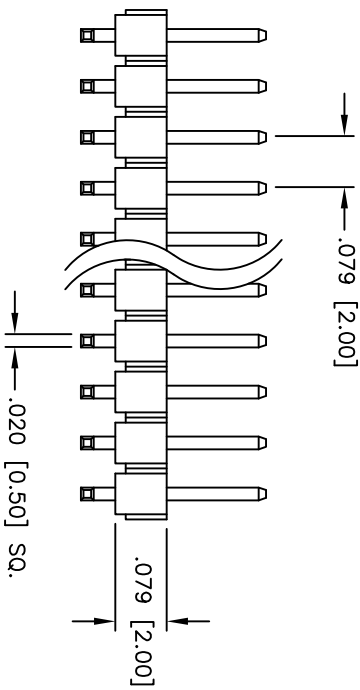


Rev	AWO #	Description	Date	Appr
-		RELEASED	12/29/10	

APPROVED: \_\_\_\_\_  
 DATE: \_\_\_\_\_ TITLE: \_\_\_\_\_



RECOMMENDED  
PCB LAYOUT



**SPECIFICATIONS:**

- Material: Insulator: PBT, rated UL 94V-0
- Insulator color: Black
- Contacts: Brass
- Plating: Matte Tin over Nickel underplate overall
- Electrical: Operating voltage: 250 VAC max
- Current rating: 1 Amp max
- Contact resistance: 20 mohms max
- Insulation resistance: 5,000 Mohms min @ 500 VDC
- Dielectric withstanding voltage: 1,000 VAC for 1 minute
- Temperature Rating: Operating temperature: -55°C to +105°C
- Environmental: Lead free, RoHS compliant
- Recommended soldering temp: 235°C for 5 seconds

Positions: 1 thru 40  
 A = .079 [2.00] x No. of Positions  
 B = .079 [2.00] x No. of Spaces

UNLESS OTHERWISE SPECIFIED  
 ALL DIMENSIONS ARE INCHES [MM]  
 TOLERANCES: EXCEPT AS NOTED  
 INCHES HOLE SIZE  
 .X ± .10 ØXX ± .10  
 .XX ± .020 ØXXX ± .015  
 .XXX ± .015 ØXXX ± .010

**ADAM TECH**  
 909 Railway Avenue, Union, NJ 07083  
 Phone: 908-687-5000 Fax: 908-687-5710



DRAWN		DATE		TITLE	
AY	12/29/10			.079 [2.00] SINGLE ROW PIN HEADER RIGHT ANGLE, MATTE TIN PLATED	
CHECKED	JL	12/29/10		SIZE	PART NO.
APPROVED				X	2PH1R-XX-MT-.110/.087/.118
		REF:	S00039T	SCALE:	NTS
				SHEET	1 OF 1