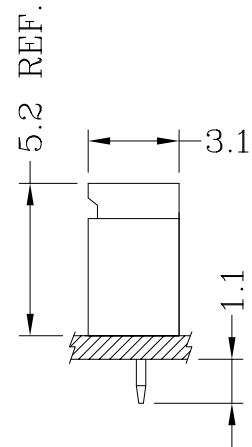


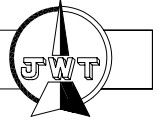
Assembly Layout



Specifications:

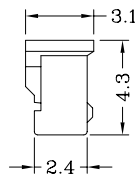
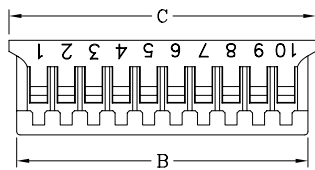
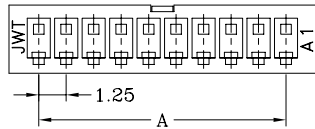
Poles	2~15 Poles
Pitch between poles	1.25mm
Rated Voltage	100V AC,DC
Rated Current	1A (AWG #28)
Withstand Voltage	800V AC/minute
Contact Resistance	20mΩ (MAX.)
Insulation Resistance	100MΩ (MIN.)
Temperature Range	-40°~+70°C
Applicable P.C.B. Thickness	0.6~1.2mm
Applicable P.C.B. Hole dia.	∅0.60±0.03mm
Applicable Wire Range	AWG #28~#32

A1253 Series 1.25mm pitch crimp terminal socket



Features:

- * Available in 2 through 15 circuits
- * Material: PBT UL 94V-0 (Light Brown)
- * Suitable for JWT A1253 series terminal



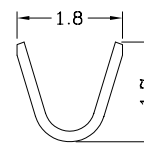
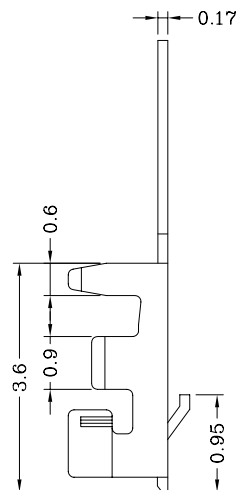
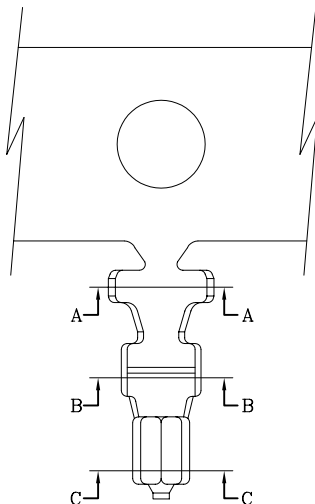
Dimensional & Ordering Information:

Circuits	Part No	Dimensions			Pcs/Bag
		A	B	C	
2	A1253H00-2P	1.25	3.25	3.95	1000
3	A1253H00-3P	2.50	4.50	5.20	1000
4	A1253H00-4P	3.75	5.75	6.45	1000
5	A1253H00-5P	5.00	7.00	7.70	1000
6	A1253H00-6P	6.25	8.25	8.95	1000
7	A1253H00-7P	7.50	9.50	10.20	1000
8	A1253H00-8P	8.75	10.75	11.45	1000
9	A1253H00-9P	10.00	12.00	12.70	1000
10	A1253H00-10P	11.25	13.25	13.95	1000
11	A1253H00-11P	12.50	14.50	15.20	1000
12	A1253H00-12P	13.75	15.75	16.45	1000
13	A1253H00-13P	15.00	17.00	17.70	1000
14	A1253H00-14P	16.25	18.25	18.95	1000
15	A1253H00-15P	17.50	19.50	20.20	1000

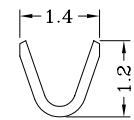
A1253 Series 1.25mm pitch crimp terminal

Features:

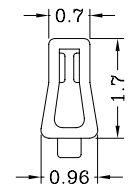
- * Used in JWT A1253 series socket



Section A-A



Section B-B



Section C-C

Specification & Ordering Information:

Part No	Wire Range	Insulation O.D.	Material	Finish	Qty/reel
A1253TOP-2	AWG #28~#32	1.00mm(max)	Phosphor bronze	Tin-plated	20,000 pcs