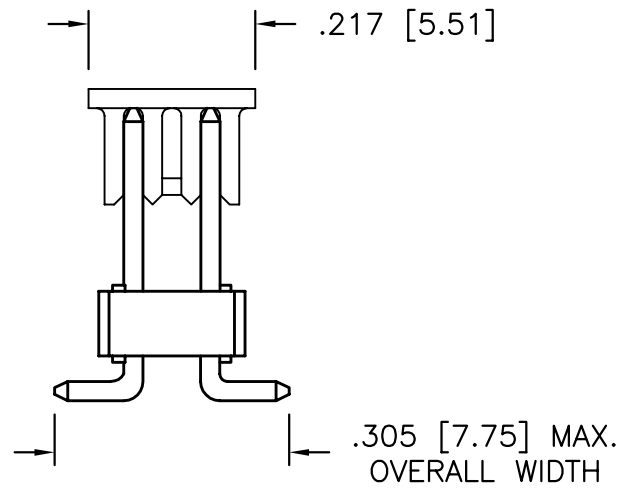
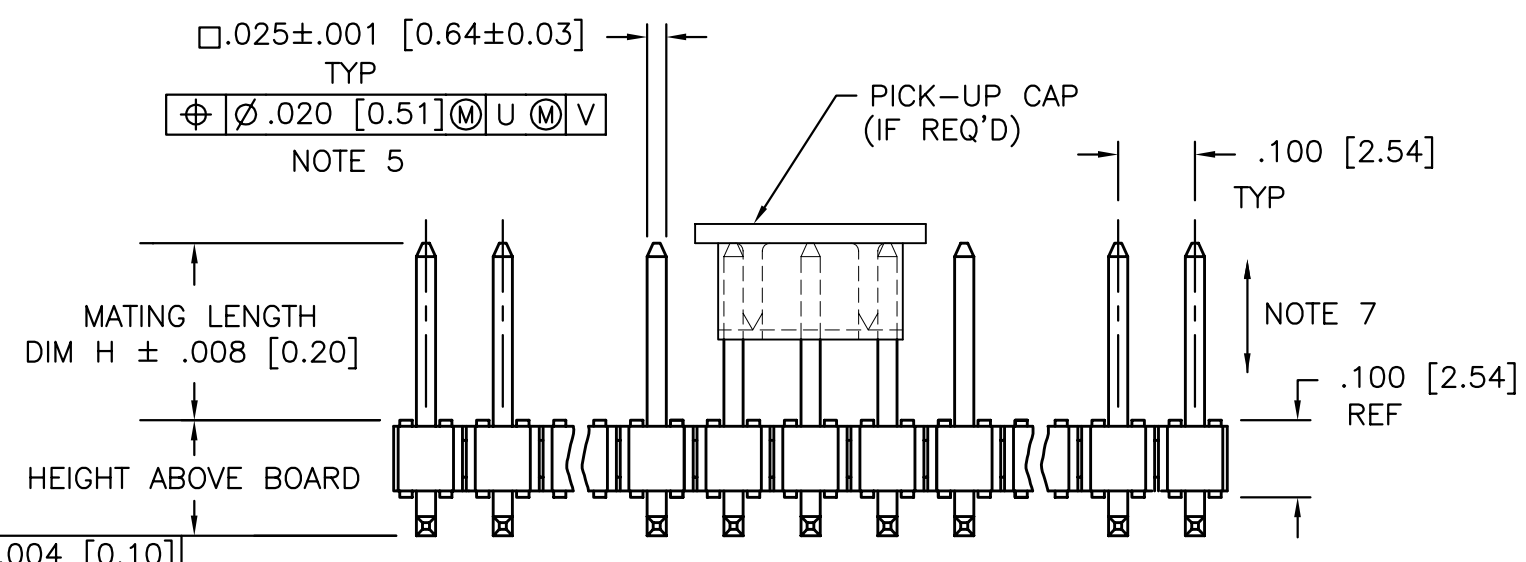
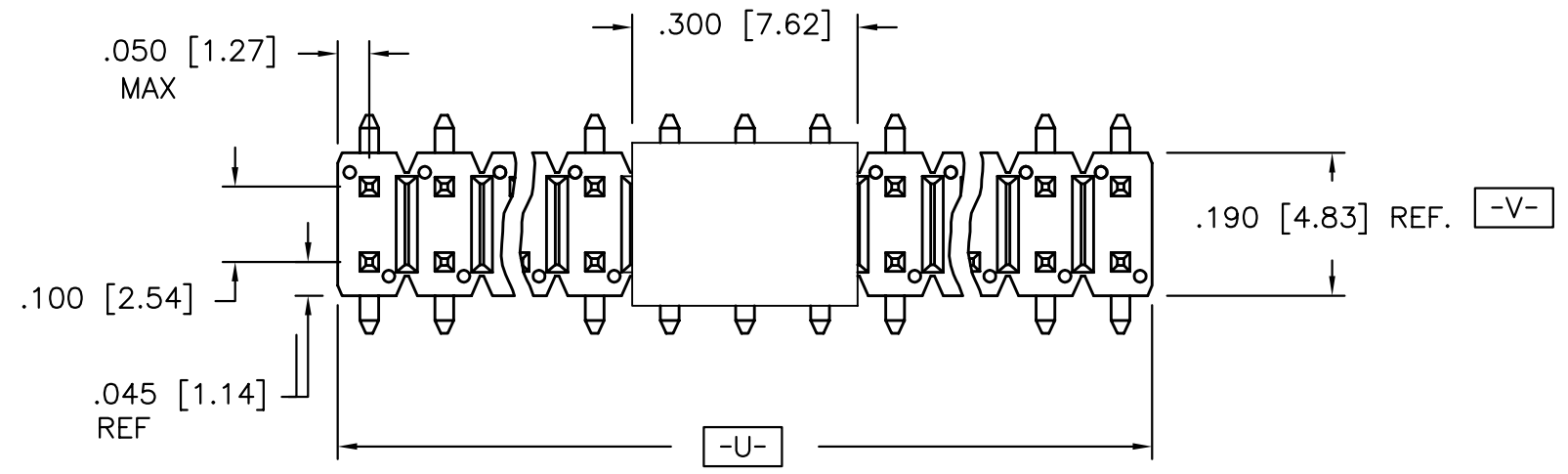


Tous droits strictement reserves. Reproduction ou communication a des tiers interdite sous quelque forme que ce soit sans autorisation ecrite du proprietaire. Propriete de c FCI. Droits de reproduction FCI.

All rights strictly reserved. Reproduction or issue to third parties in any form whatever is not permitted without written authority from the proprietor. Property of FCI. Copyright FCI.

PRODUCT NO.  
XXXXX-YYYHPZ

- PACKAGING OPTIONS (SEE NOTE 4)
- HIGH TEMPERATURE PLASTIC (SEE NOTE 1)
- NO. OF POSITIONS (SEE NOTE 3)
- PLATING NUMBER (SEE SHEET 2)
- BASE PART NUMBER (SEE SHEET 4)



mat'l. code NOTE 1 & 2				tolerances unless otherwise specified				CUSTOMER COPY		Electronics www.fciconnect.com			
ltr	ecn no	dr	date	linear	.XX ±.01 / xx±.3			projection	title				
AA	V80863	HTB	5/15/98		.XXX ±.005 / .xx±.13				BERGSTIK® II HEADER DR				
AB	V81244	SAR	9/15/98	angles	.XXX ±.0020 / .xxx± .051				.100/2.54cc VERTICAL SMT				
AC	V91410	EPK	6/28/99		0° ±2°				product family BERGSTIK				
AD	V91472	LSS	7/7/99	dr	T.BREWBAKER	12/29/92	INCH/mm	code		213			
AE	V94316	DAI	11/15/99	enr	T.HANNA	12/29/92		size		dwg no			
AF	V20562	GIP	03/22/02	chr	T.HANNA	12/29/92	scale	A		78227			
				appd	T.HANNA	12/29/92		1:1		sheet			
sheet index	revision sheet	AF 1	AF 2	AF 3	AF 4								

cage code  
22526

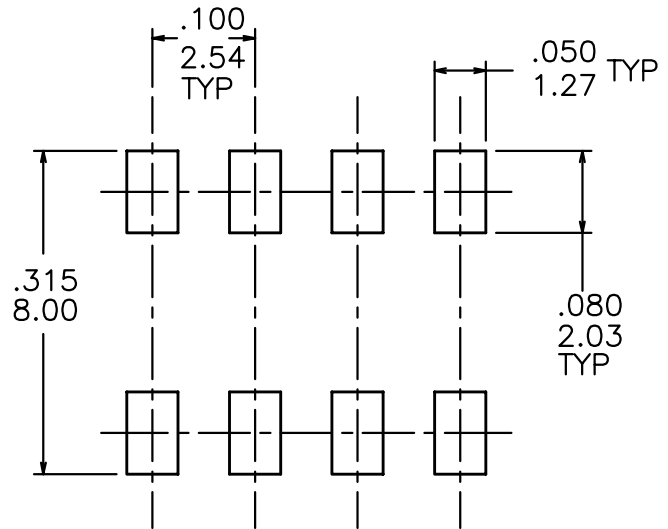
ACAD

Tous droits strictement reserves. Reproduction ou communication a des tiers interdite sous quelque forme que ce soit sans autorisation écrite du propriétaire. Propriete de c FCI. Droits de reproduction FCI.

All rights strictly reserved. Reproduction or issue to third parties in any form whatever is not permitted without written authority from the proprietor. Property of FCI. Copyright FCI.



PRODUCT NUMBER	OVERPLATING	UNDERPLATING
XXXXX-1YY	30u"/.76u MIN AU	50u"/1.27u MIN Ni
XXXXX-2YY	15u"/.38u MIN AU	50u"/1.27u MIN Ni
XXXXX-3YY	50u"/1.27u MIN AU	50u"/1.27u MIN Ni
XXXXX-4YY	120u"/3.05u MIN 93/7 SNPB	50u"/1.27u MIN Ni
XXXXX-5YY	15u"/.38u MIN GXT™	50u"/1.27u MIN Ni
XXXXX-6YY	30u"/.76u MIN GXT™	50u"/1.27u MIN Ni



RECOMMENDED PAD LAYOUT  
SCALE 4/1

NOTES:

1. BODY MATERIAL: PCT, GLASS FIBER REINFORCED, FLAME RETARDENT PER UL-94V-0.  
COLOR: BLACK  
FOR HIGH TEMPERATURE APPLICATIONS, SPECIFY AN "H" AT THE END OF THE PART NUMBER TO INDICATE HIGH-TEMP PLASTIC IS SUPPLIED.
2. PIN MATERIAL: PHOS-BRONZE.
3. NUMBER OF POSITIONS FROM 4(2X2) THRU 40(2X20), EXCEPT TAPE ON REEL AVAILABLE 4(2X2) THRU 34(2X17).
4. PACKAGING OPTIONS: CHECK SPECIFIC PART NUMBERS FOR AVAILABILITY. PART NUMBERS WITHOUT A SUFFIX ARE PACKAGED IN POLY BAGS. PART NUMBERS FOLLOWED BY A "T" SUFFIX ARE PACKAGED IN TUBES. PART NUMBERS FOLLOWED BY A "V" SUFFIX ARE PACKAGED TAPE-ON-REEL WITH A PICK-UP CAP INSTALLED. THE "Z" DIGIT FOLLOWING THE "V" INDICATES CUSTOMER SPECIAL TAPE.
5. MEASURED WITH PART IN RESTRAINED CONDITION.
6. TWO SIDES OF PIN TIPS NOT PLATED TYPICAL BOTH ENDS.
7. 2 LBS/0.9KG MIN PIN RETENTION IN EITHER DIRECTION.
8. CONTACT MARKETING BEFORE ORDERING ANY ODD POSITION PART NUMBERS SUCH AS 2X3, 2X5, 2X7, ETC. PACKAGED TAPE-ON-REEL.

mat'l. code				tolerances unless otherwise specified		CUSTOMER COPY		Electronics www.fciconnect.com		
ltr	ecn no	dr	date	linear	.XX ±.01/.3		projection	title		
AF					.XXX ±.005/0.13			BERGSTIK® II HEADER DR		
				angles	.XXXX ±.0020/0.051			.100 VERT. SMT.		
				dr	T.BREWBAKER	12/29/92		INCH/MM	product family	BERGSTIK
				enr	T.HANNA	12/29/92	scale	size	dwg no	
				chr	T.HANNA	12/29/92		A	78227	
				appd	T.HANNA	12/29/92			sheet	2 of
sheet index	revision sheet									

cage code  
22526

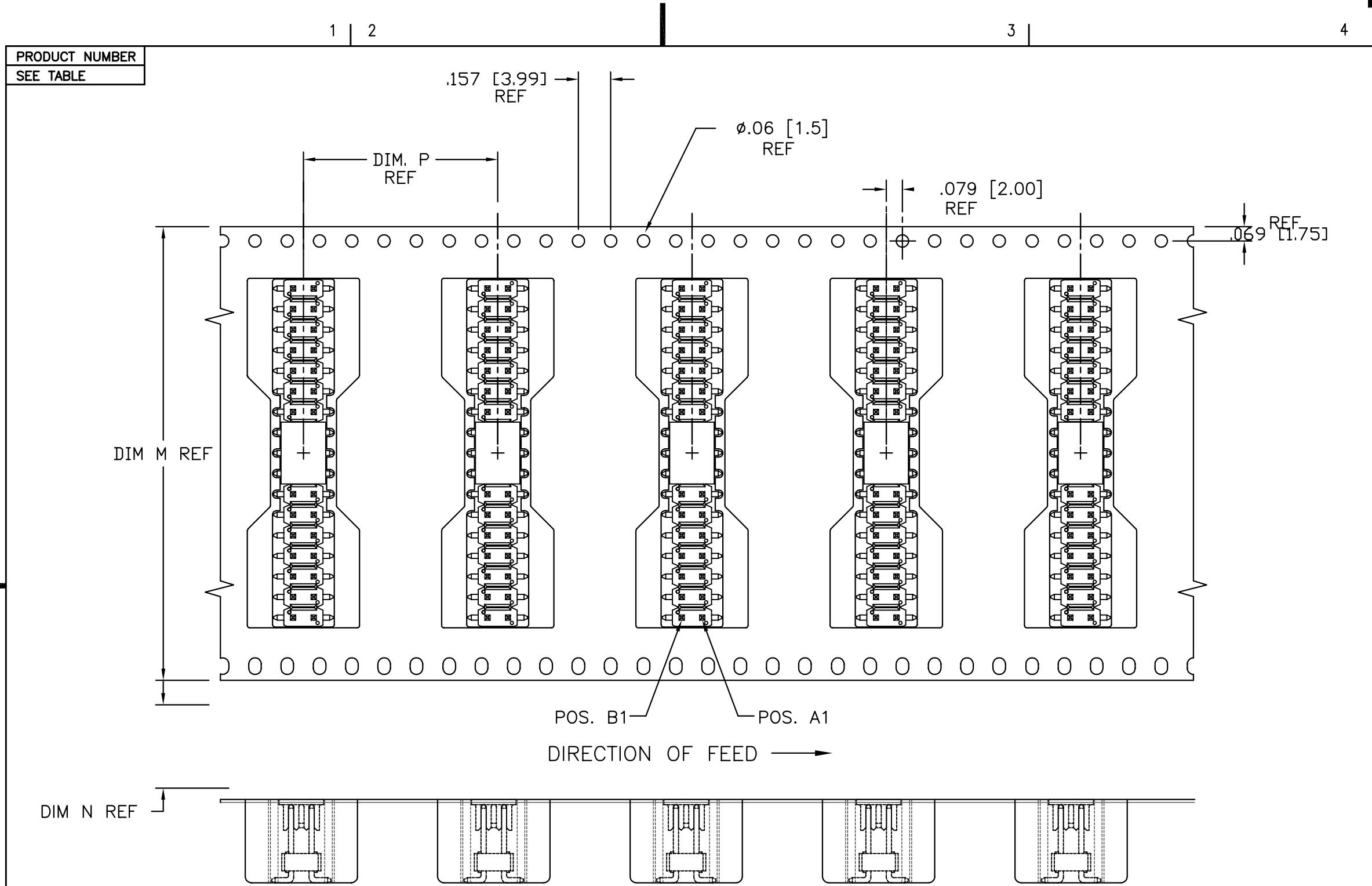
PDM: Rev:AF STATUS: Released

Printed: Jul 20, 2002

ACAD

Tous droits strictement reserves. Reproduction ou communication a des tiers interdite sous quelque forme que ce soit sans autorisation écrite du propriétaire. Propriete de c FCI. Droits de reproduction FCI.

All rights strictly reserved. Reproduction or issue to third parties in any form whatever is not permitted without written authority from the proprietor. Property of FCI. Copyright FCI.



PRODUCT NUMBER  
SEE TABLE

mat'l. code		-		tolerances unless otherwise specified		CUSTOMER COPY		Electronics www.fciconnect.com	
ltr	ecn no	dr	date	linear	.XX ±.01/.3		projection	title	
AF					.XXX ±.005/0.13			BERGSTIK® II HEADER DR	
					.XXX ±.0020/0.051			.100 VERTICAL SMT.	
				angles	0° ±2°			product family BERGSTIK	
				dr	T.BREWBAKER	12/29/92		code 213	
				enr	T.HANNA	12/29/92	size dwg no		
				chr	T.HANNA	12/29/92	A 78227		
				appd	T.HANNA	12/29/92	sheet 3 of		
sheet index	revision sheet					scale 1.5:1		cage code 22526	

ACAD

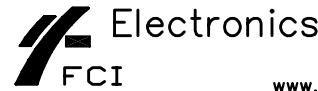
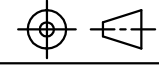
PDM: Rev:AF STATUS: Released

Printed: Jul 20, 2002

Tous droits strictement reserves. Reproduction ou communication a des tiers interdite sous quelque forme que ce soit sans autorisation ecrite du proprietaire. Propriete de c FCI. Droits de reproduction FCI.

All rights strictly reserved. Reproduction or issue to third parties in any form whatever is not permitted without written authority from the proprietor. Property of FCI. Copyright FCI.

PRODUCT NUMBER	MATING LENGTH		HT. ABOVE BOARD		PACKAGING AVAILABLE	TAPE WIDTH OVERALL		POCKET DEPTH OVERALL		POCKET PITCH	
	ENGLISH	METRIC	ENGLISH	METRIC		ENGLISH	METRIC	ENGLISH	METRIC	ENGLISH	METRIC
	DIM H	DIM H	----	----		DIM M	DIM M	DIM N	DIM N	DIM P	DIM P
71276-XYH	0.230	5.84	0.150	3.81	POLY BAGS / TAPE-ON-REEL	2.205	56.00	0.433	11.00	0.945	24.00
71276-408HV	0.230	5.84	0.150	3.81	TAPE-ON-REEL	0.945	24.00	0.433	11.00	0.787	20.00
71276-410HV2	0.230	5.84	0.150	3.81	TAPE-ON-REEL	0.945	24.00	0.415	10.54	0.787	20.00
71277-XYH	0.318	8.08	0.150	3.81	POLY BAGS/TAPE-ON-REEL(NOTE 8)	2.205	56.00	0.524	13.28	0.945	24.00
73502-XYH	0.420	10.67	0.150	3.81	POLY BAGS	N/A	N/A	N/A	N/A	N/A	N/A
74938-XYH	0.330	5.84	0.150	3.81	POLY BAGS	N/A	N/A	N/A	N/A	N/A	N/A
78227-XY	0.230	5.84	0.125	3.18	POLY BAGS / TUBES	N/A	N/A	N/A	N/A	N/A	N/A
78227-410HV2	0.230	5.84	0.125	3.18	TAPE-ON-REEL	0.945	24.00	0.415	10.54	0.787	20.00
78588-XY	0.318	8.08	0.125	3.18	POLY BAGS	N/A	N/A	N/A	N/A	N/A	N/A
79682-XY	0.505	12.83	0.125	3.18	POLY BAGS	N/A	N/A	N/A	N/A	N/A	N/A
79683-XY	0.700	17.78	0.125	3.18	POLY BAGS	N/A	N/A	N/A	N/A	N/A	N/A
93988-XYH	U N A V A I L A B L E										
94623-XYH	0.350	8.89	0.125	3.18	POLY BAGS	N/A	N/A	N/A	N/A	N/A	N/A
95086-XYH	0.183	4.65	0.125	3.18	POLY BAGS	N/A	N/A	N/A	N/A	N/A	N/A
98330-XYH	0.290	7.37	0.150	3.81	POLY BAGS	N/A	N/A	N/A	N/A	N/A	N/A
98354-XYH	0.219	5.56	0.125	3.18	POLY BAGS	N/A	N/A	N/A	N/A	N/A	N/A
78227-406HV2	0.230	5.84	.125	3.18	TAPE ON REEL	.945	24.00	.415	10.54	.787	20.00

mat'l. code				tolerances unless otherwise specified				CUSTOMER COPY		 www.fciconnect.com			
ltr	ecn no	dr	date	linear	.XX ±.01 / xx±.03				projection	title			
AF					.XXX ±.005 / .xx±.13					BERGSTIK® II HEADER DR			
					.XXXX ±.0020 / .xxx± .051					.100/2.54cc VERTICAL SMT			
				angles	0° ±2°				 INCH/mm	product family		code	
				dr	T.BREWBAKER	12/29/92		BERGSTIK		213			
				enr	T.HANNA	12/29/92		size		dwg no			
				chr	T.HANNA	12/29/92		A		78227			
				appd	T.HANNA	12/29/92		scale		4 of			
sheet index	revision												
	sheet	1											

cage code 22526

ACAD