

# D-SUB ~ SOLDER

## Stamped & Formed

**DN SERIES**

### MATERIAL

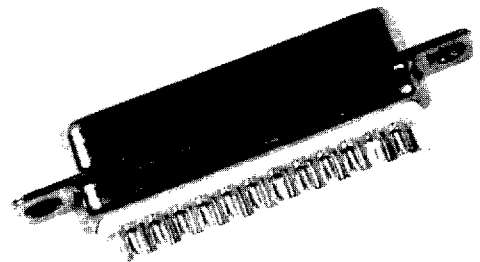
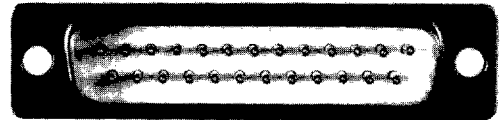
Insulator: Two Pieces White PBT  
 Contact: Copper Alloy  
 Contact Plating: Gold Over Nickel (see "Plating Option" below)  
 Shell: Steel, with Yellow Chromate or Tin Plating

### SPECIFICATIONS

Current Rating: 5A  
 Insulator Resistance: 1000 MΩ  
 Contact Resistance: 20 mΩ Max  
 Voltage Rating: 500V AC for one minute  
 Operating Temperature: -55°C - +105°C

### FEATURES

- ♦ Standard contact terminations accommodate up to 20 AWG standard wire
- ♦ The keystone shape of the shell assures proper polarization
- ♦ Coupling is accomplished by contact friction although standard locking accessories may be used
- ♦ Special hardware options available (see "Hardware Option" below)
- ♦ With stamped and formed solder contacts
- ♦ **Mating Series:** DN, DNS, DNP, DNC, DNR, DNRI, DNRL, DNDP, DNF



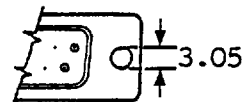
## HOW TO ORDER:

1      2      3      4      5      6

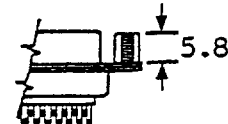
1. **SERIES**  
 DN = D-Sub, Solder

5. **HARDWARE OPTION**  
 SH = 3.05mm Standard Mounting Holes

2. **POSITION**  
 09 = 9 Position  
 15 = 15 Position  
 25 = 25 Position  
 37 = 37 Position  
 50 = 50 Position

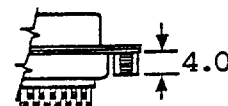


CC = 5.8mm Clinch Nut (4-40) on Contact Side



3. **GENDER**  
 P = Plug (Male)  
 S = Socket (Female)

CS = 4.0mm Clinch Nut (4-40) on Solder Side



4. **SHELL PLATING**  
 Y = Yellow Chromate  
 T = Tin

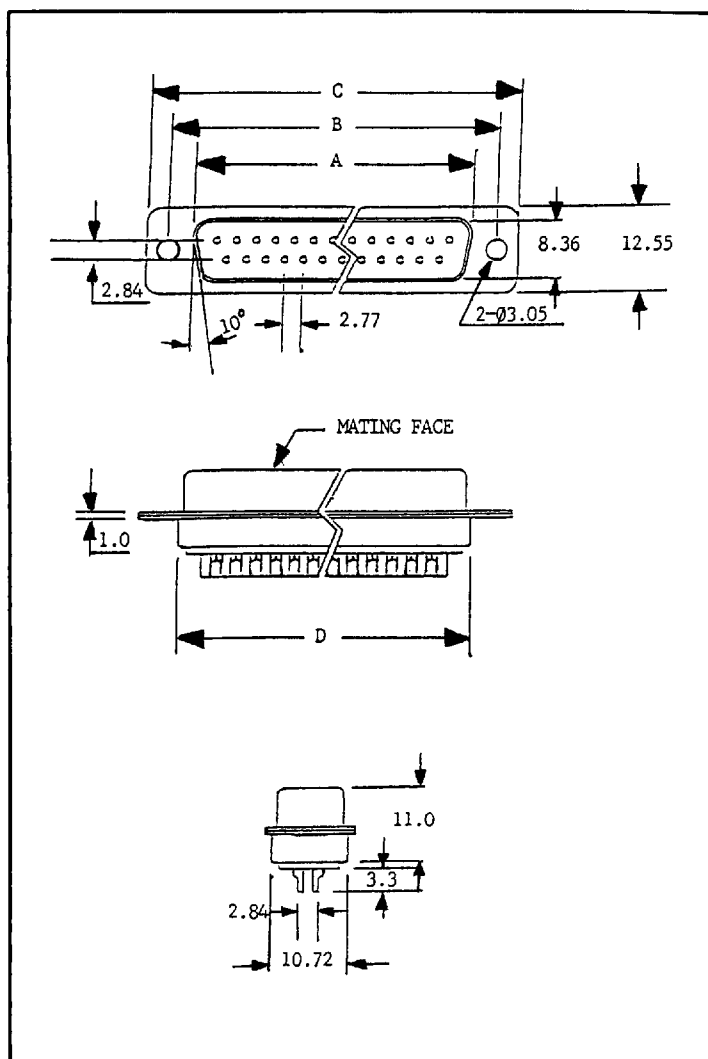
6. **PLATING OPTION**  
 G = Full Gold Flash  
 SG = Selective Gold Flash

**D-SUB ~ SOLDER**  
**Stamped & Formed**

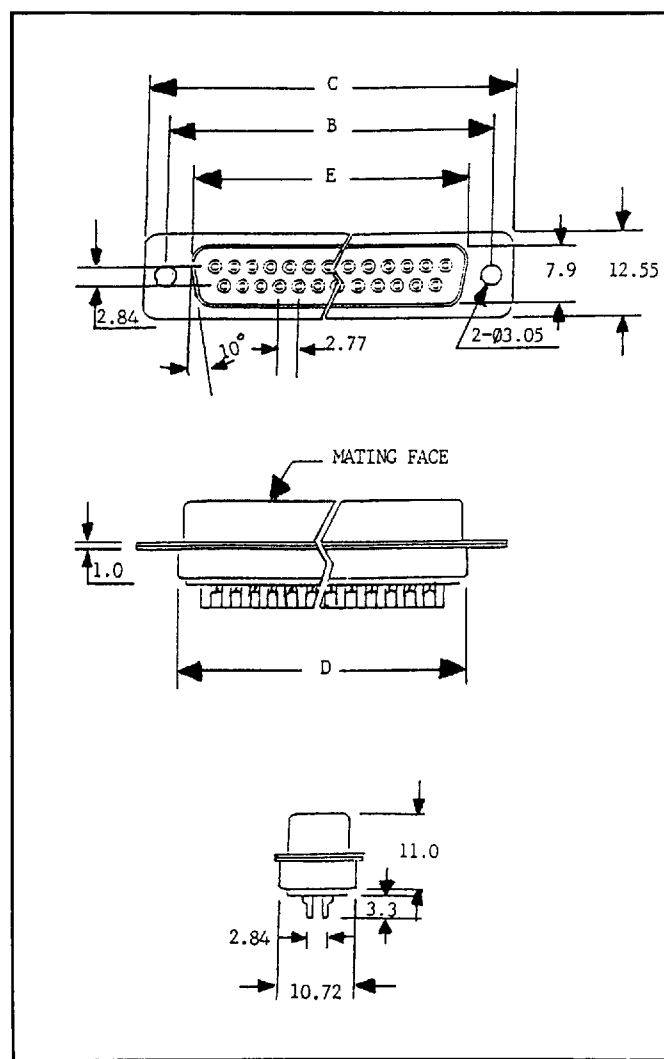
**DN SERIES**

**SPECIFICATIONS:**

**MALE**



**FEMALE**



**DIMENSIONS:**

POSITION	A	B	C	D	E
9	16.92	24.99	30.81	19.28	16.33
15	25.25	33.32	39.14	27.51	24.66
25	38.96	47.04	53.04	41.30	38.38
37	55.42	63.50	69.32	57.71	54.84
50	52.86	61.11	66.90	55.30	52.34

**ENGINEERS:** For detailed Data Sheets, including *tolerances*, see pages 157 & 159 or call us!