

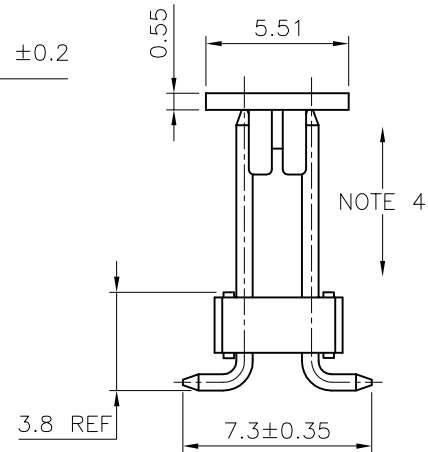
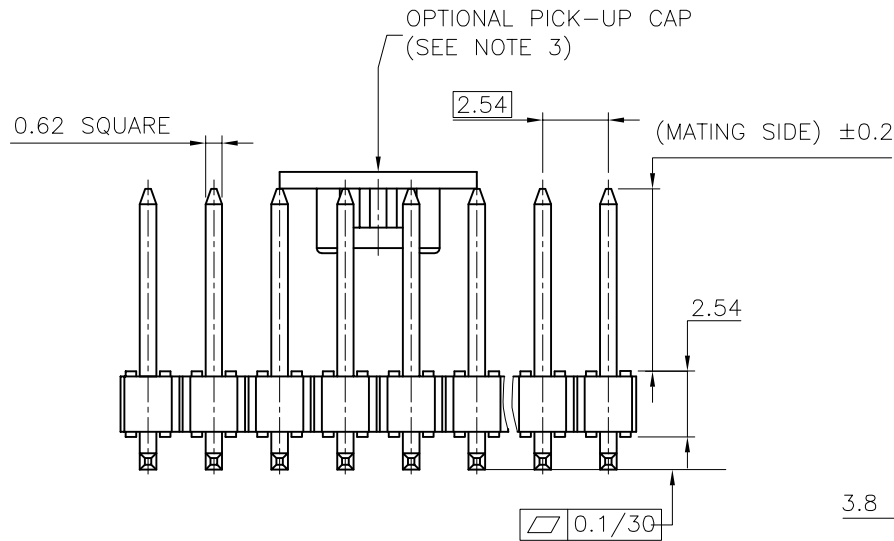
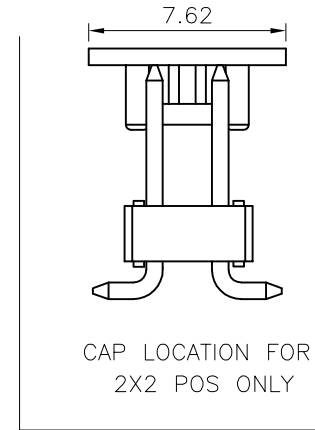
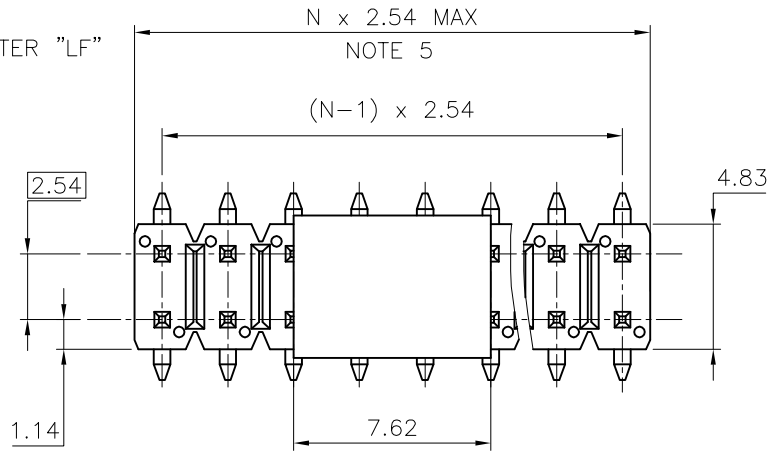
PRODUCT NUMBER

95278-YXX-XXLF

- WHEN REQUIRED, ADD SUFFIX LETTER "LF" INDICATES THE PRODUCT IS RoHS COMPATIBLE, SEE NOTE 6
- TOTAL NB OF POSITIONS 04 TO 50
- PACKAGING OPTIONS, NOTE 3.
- PIN STYLE SEE SHEET 2
- PLATING SEE SHEET 2

NOTES:

1. HOUSING MAT'L : HIGH TEMPERATURE THERMOPLASTIC. UL94V-0 COLOR: BLACK
2. PIN MATERIAL : PHOSPHOR BRONZE
- 3 - PACKAGING OPTIONS:
  - = POLY BAGS
  - A = TAPE & REEL WITH CAP, SEE TA840 FOR PRODUCT AVAILABILITY.
  - B = TUBE + CAP
  - K = TAPE & REEL WITHOUT CAP
  - TR = TAPE & REEL WITH CAP, SEE TA840 ONLY FOR P/N 95278-102TR04LF
4. 9N MIN RETENTION IN EITHER DIRECTION
5. TO DETERMINE DIMENSIONS :  
N = NUMBER OF POSITIONS PER ROW  
EXAMPLE : 8 POS N x 2.54 = 20.32mm
6. RoHS COMPATIBLE PRODUCT SPECIFICATIONS
  - a - PLATING:
    - "LF" MEANS THE PRODUCT IS LEAD-FREE, 2µm MINIMUM MATTE TIN OVER 1.27µm MINIMUM NICKEL UNDERPLATE.
  - b - MANUFACTURING PROCESS COMPATIBILITY
    - THE HOUSING WILL WITHSTAND EXPOSURE TO 260°C PEAK TEMPERATURE FOR 30 SECONDES IN A CONVECTION, INFRA-RED OR VAPOR PHASE REFLOW OVEN.
  - c - LABELING:
    - MEETS PACKAGING SPECS AS PER GS-14-920
  - d - LEGAL STATEMENT: SEE GS-22-008



mat'l. code		surface	tolerance	projection	product family
		ISO 1302	ISO 406 ISO 1101		BERGSTIK
ltr		tolerances unless otherwise specified			title
N	F08-0148 RTR	08.03.31	angles	linear	UNSHR.HEADER
P	F08-0253 LMU	08.12.10			DR SMT
R	F10-0008 LMU	10.03.09			dwg no
S	B-16064 JCO	13.10.16	dr	D.LE	sheet 1 of 2
			enrg	JM.C	size
L	F06-0208 JCO	06.06.22	chr	JM.C	95278
M	F08-0124 LMU	08.02.11	appd	JF.N	A3
sheet		revision	S	P	type
index	sheet	1	2		CUSTOMER Drawing

1

2 3

4

5

6

CORE RANGE		
PLATING	PIN STYLE	MATING
1	01	5.9

PLATING  
 1 = 0.76µm GOLD/GXT ON CONTACT AREA  
 3.81µm TIN/LEAD ON TAIL

WHEN "LF" IS REQUIRED, 2µm MIN  
 MATTE TIN OVER 1.27µm MIN NICKEL  
 INSTEAD OF TIN-LEAD

CATALOGUE RANGE		
PLATING	PIN STYLE	MATING
4/8	01	5.9
1/4/8	02	8

PLATING  
 1 = 0.76µm GOLD/GXT ON CONTACT AREA  
 3.81µm TIN-LEAD ON TAIL

4 = 3.81µm TIN-LEAD ON CONTACT AREA  
 AND ON TAIL

8 = 0.38µm GOLD/GXT ON CONTACT AREA  
 3.81µm TIN-LEAD ON TAIL

WHEN "LF" IS REQUIRED, 2µm MIN  
 MATTE TIN OVER 1.27µm MIN NICKEL  
 INSTEAD OF TIN-LEAD

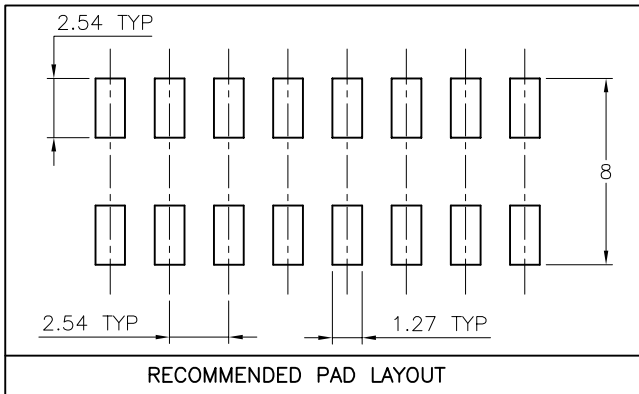
APPLICATION SPECIFIC		
PLATING	PIN STYLE	MATING
1/4/8	06	10.4
1/4/8	07	5.3
1/4/8	09	17.00
1/4/8	10	8.10
1/4/8	11	8.50

PLATING  
 1 = 0.76µm GOLD/GXT ON CONTACT AREA  
 3.81µm TIN-LEAD ON TAIL

4 = 3.81µm TIN-LEAD ON CONTACT AREA  
 AND ON TAIL

8 = 0.38µm GOLD/GXT ON CONTACT AREA  
 3.81µm TIN-LEAD ON TAIL

WHEN "LF" IS REQUIRED, 2µm MIN  
 MATTE TIN OVER 1.27µm MIN NICKEL  
 INSTEAD OF TIN-LEAD



FCIconnect.com

Copyright FCI

mat'l. code		surface	tolerance	projection	product family
		ISO 1302	ISO 406 ISO 1101		BERGSTIK
ltr	ecn no	dr	date	title	
N	F08-0253	LMU	08.12.10	UNSHR.HEADER	
P	B-16064	JCO	13.10.15	DR SMT	
		angles	linear	mm	scale N/A
J	F04-0362	JCO	04.12.10	dr	D.LE 01.01.24
K	F06-0208	JCO	06.06.22	enrg	JM.C 01.01.24
L	F08-0124	LMU	08.02.11	chr	JM.C 01.01.24
M	F08-0148	RTR	08.03.31	appd	JF.N 01.01.24
sheet		revision			
index		sheet			

1

2

3

4

5

6