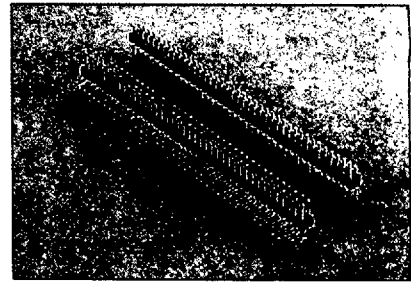


.079" (2.00mm) HEADER ASSEMBLIES



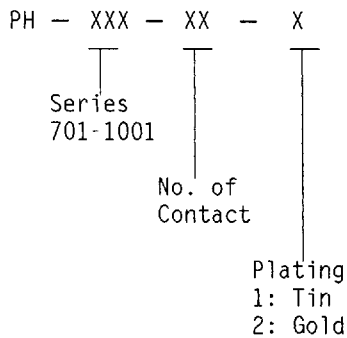
SPECIFICATION

- * Current Rating:
3 A
- * Withstanding Voltage:
500 VAC (1 min.)
- * Insulation Resistance:
1000 MΩ min.
- * Contact Resistance:
20 mΩ max.
- * Operating Temperature:
-40°C to +85°C

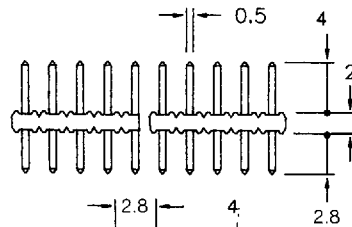
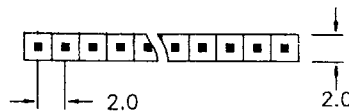
MATERIAL

- * Contact: Brass ,
0.51mm square post
- * Insulator: PBT & 30% G. F.
- * Plating: Gold or Tin

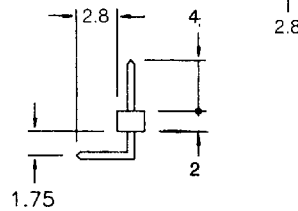
ORDER INFORMATION



Single Row

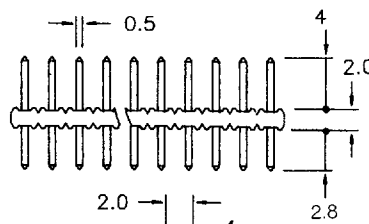
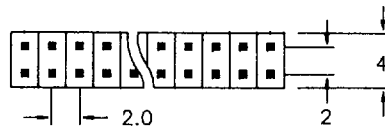


701 SERIES

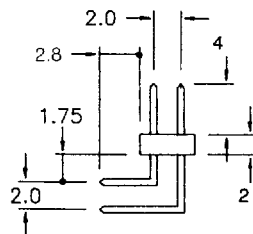


901 SERIES

Dual Row



801 SERIES



1001 SERIES

Specifications are subject to change without notice