



# SEOA-S thru SEOM-S

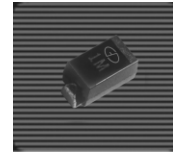
1.5 Amps. High Efficient Surface Mount Rectifiers  
Voltage Range 50 to 1000 Volts Forward Current 1.5 Amperes

## Features

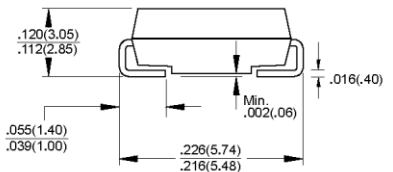
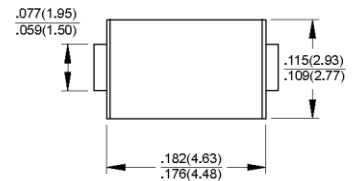
- ◆ For surface mounted application
- ◆ Low forward voltage drop
- ◆ Low profile package
- ◆ Built-in stain relief, ideal for automatic placement
- ◆ Fast switching for high efficiency
- ◆ Easy pick and place
- ◆ High temperature soldering:  
260°C/10 seconds at terminals
- ◆ Plastic material used carries Underwriters Laboratory  
Classification 94V-O

## Mechanical Data

- ◆ Cases: New SMA molded plastic
- ◆ Terminals: Solder plated solderable per MIL-STD-750,  
Method 2026
- ◆ Polarity: Indicated by cathode band
- ◆ Weight: 0.004 ounce, 0.11 gram



DO-214AC (SMAJ)



Dimensions in inches and (millimeters)

## Maximum Ratings and Electrical Characteristics

Ratings at 25°C ambient temperature unless otherwise specified.

Single phase, half wave, 60Hz, resistive or inductive load.

For capacitive load, derate current by 20%

Parameter	Symbols	SEOAS	SEOB-S	SEOD-S	SEOF-S	SEOGS	SEOJ-S	SEOK-S	SEOMS	Units	
Maximum repetitive peak reverse voltage	$V_{RRM}$	50	100	200	300	400	600	800	1000	Volts	
Maximum RMS voltage	$V_{RMS}$	35	70	140	210	280	420	560	700	Volts	
Maximum DC blocking voltage	$V_{DC}$	50	100	200	300	400	600	800	1000	Volts	
Maximum average forward rectified current See Fig.2	$I_{AV}$	1.5								Amps	
Peak forward surge current, 8.3ms single half sine-wave superimposed on rated load (JEDEC Method)	$I_{FSM}$	50.0								Amps	
Maximum instantaneous forward voltage @ 1.5A	$V_F$	1.00			1.30		1.70			Volts	
Maximum DC reverse current @ $T_A=25^\circ\text{C}$ at rated DC blocking voltage @ $T_A=100^\circ\text{C}$	$I_R$	10.0				500					$\mu\text{A}$ $\mu\text{A}$
Maximum reverse recovery time (Note 1)	$t_{rr}$	50			100				nS		
Typical junction capacitance (Note 2)	$C_j$	50			30				pF		
Operating temperature range	$T_J$	-55 to +125									$^\circ\text{C}$
Storage temperature range	$T_{STG}$	-55 to +150									$^\circ\text{C}$

- Notes:**
1. Reverse Recovery Test Conditions:  $I_F=0.5\text{A}$ ,  $I_R=1.0\text{A}$ ,  $I_{RR}=0.25\text{A}$
  2. Measured at 1 MHz and Applied Reverse Voltage of 4.0 V D.C.

# RATINGS AND CHARACTERISTIC CURVES

FIG.1- REVERSE RECOVERY TIME CHARACTERISTIC AND TEST CIRCUIT DIAGRAM

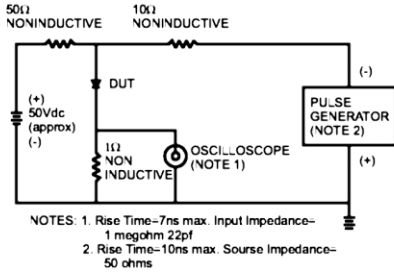


FIG.2- MAXIMUM FORWARD CURRENT DERATING CURVE

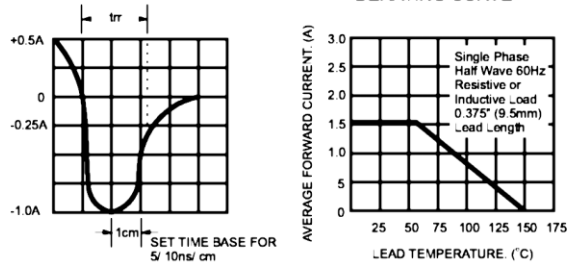


FIG.3- TYPICAL REVERSE CHARACTERISTICS

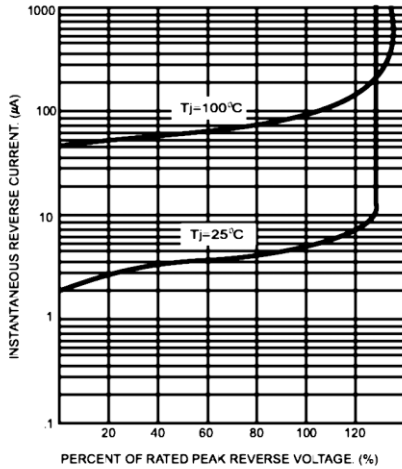


FIG.4- TYPICAL INSTANTANEOUS FORWARD CHARACTERISTICS

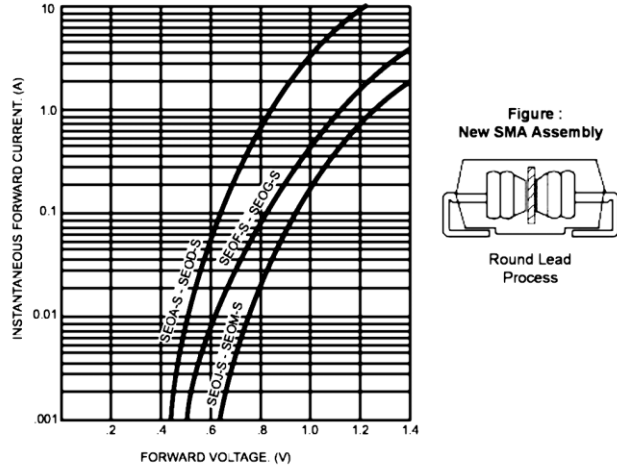


FIG.5- MAXIMUM NON-REPETITIVE FORWARD SURGE CURRENT

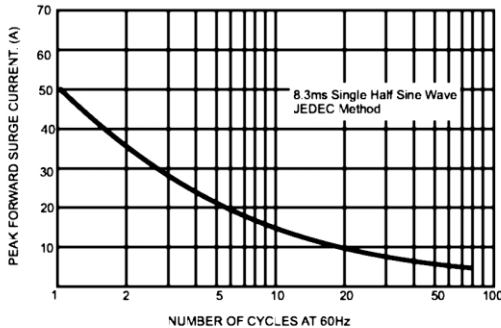


FIG.6- TYPICAL JUNCTION CAPACITANCE

