

**SPECIFICATIONS**

**D-SUB Connector**

**Mechanical**

**Contact Mating Force:** 3.1kg (6.5Lb) max.  
**Contact Unmating Force:** 0.2kg (0.4Lb) min.  
**Contact Retention Force:** 0.91kg (2.0Lb) min.

**Electrical**

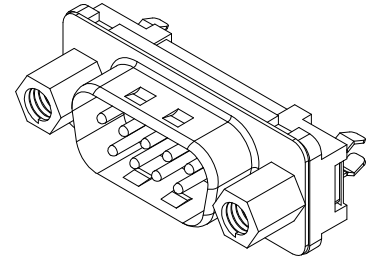
**Current Rating:** 2.0A  
**Contact Resistance:** 35mW max.  
**Dielectric Withstanding Voltage:** 1000V AC/1min min.  
**Insulation Resistance:** 5000MW

**Physical**

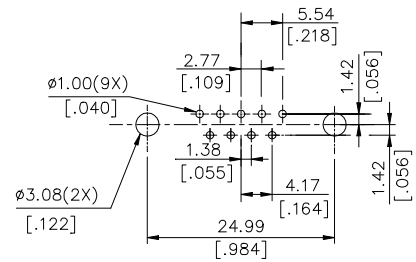
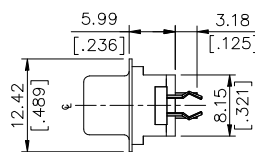
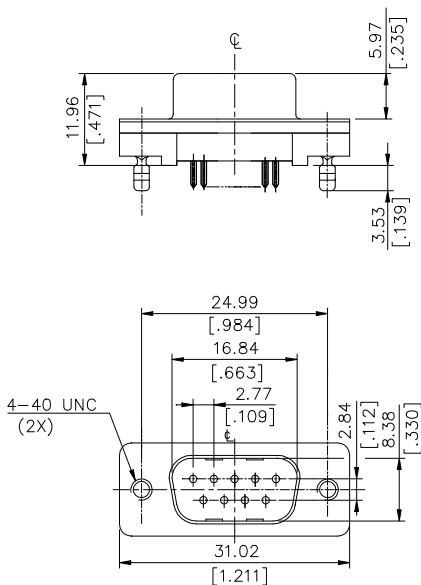
**Housing:** Thermoplastic, UL 94V-0 rated in Black Color  
**Contact:** Copper alloy  
**Plating:** See "ORDERING INFORMATION"  
**Solder Pad:** Copper alloy  
**Operating Temperature:** -55 to +105

**DT Series**

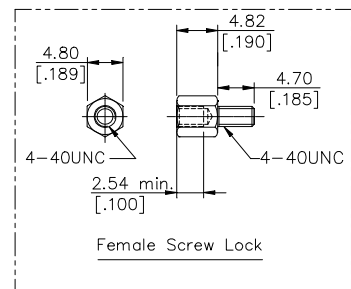
**Vertical Type, T/H**  
**2.77mm [.109"] Pitch**  
**9 Pos.**



**DRAWING**



RECOMMENDED P.C.B. LAYOUT



**ORDERING INFORMATION**

**PRODUCT NO.:** DT 0 0 1 1 \* - H4A\* - 4F

