

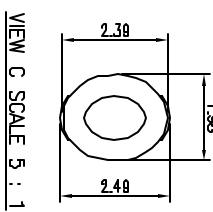
MATERIAL
INSULATOR: GLASS-REINFORCED THERMOPLASTIC.
CONTACT: COPPER ALLOY.
PLATING: MATING AREA - SELECTED GILD OVER NICKEL.
SOLDER AREA - TIN/LEAD OVER NICKEL.

ELECTRICAL
VOLTAGE RATING: 250 VAC RMS.
CURRENT RATING: 1 AMP.
DELECTRICAL WITHSTANDING VOLTAGE: 500 VAC RMS 60 Hz FOR 1 MINUTE.
INSULATION RESISTANCE: 1000 MEGOHMS MIN AT 50% VDC.
CONTACT RESISTANCE: 30 MILLIOHMS MAX AT 1 AMP DC.

MECHANICAL
RETENTION FORCE: 480 GRAMS MIN PER CONTACT.
INSERTION FORCE: 230 GRAMS MAX PER CONTACT PER.
WITHDRAWAL FORCE: 15 GRAMS MIN PER CONTACT PER.
ENVIRONMENTAL
TEMPERATURE RANGE: -55°C TO +85°C.

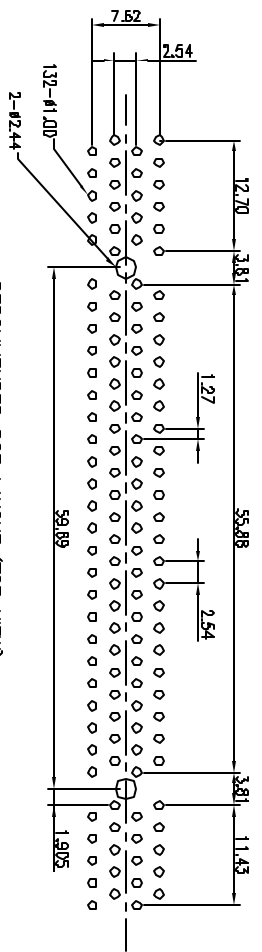
PART NO.

- Series No. _____
- P: MCA Series
- Buy No. _____
- C: 3 Buys
- No. of Pins _____
- h: houlder
- B: PBT
- C: PCT
- N: NY 85
- S: PPS
- Corkel _____
- B: Bronze
- P: Phosphor Bronze
- Corkel Thickness _____
- 3: 0.3mm
- Tail Length _____
- 2: 2.54mm
- 3: 3.00mm
- 4: 3.56mm
- Color _____
- B: Blue
- C: Coffree
- G: Green
- K: Black
- P: Purple
- Spec: White
- Post Type _____
- C: Clip
- P: Post
- Q: Post With Rib
- S: Without Post, Only Gold Plating
- 01: g/f
- 10: 10u" Gold
- 15: 15u" Gold
- 30: 30u" Gold
- 815: Pb/Ni 15u"
- Plating _____
- L: Lead Free
- Space: Th/Lead

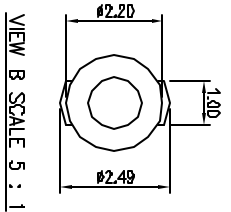
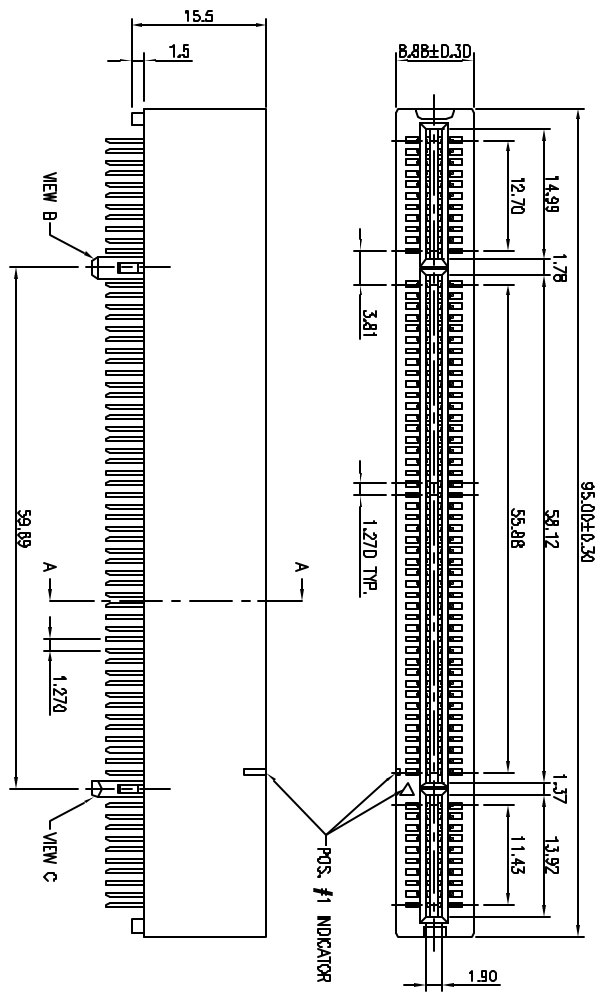
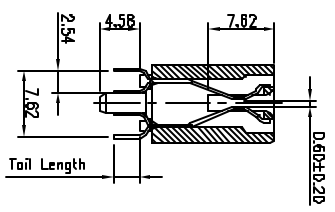


VIEW C SCALE 5 : 1

RECOMMENDED PCB LAYOUT (TOP VIEW)



SECTION A-A



VIEW B SCALE 5 : 1

TOLERANCE	
LINEAR	ANGLES
X±0.40	X±
X±0.30	X±
X±0.20	X±
.XXX±0.10	.XXX±

啟賀興業股份有限公司
REMAX KE MAX SHING CO., LTD.

TITLE: MCA THREE BAYS 132P SLOP POST WITH RIB
PART NO. PC132XX3XXXXX
DWG NO. P13207001

REV	ECN NO.	NAME	DATE	DRWN:	CHKD:	FINISH:	Q'TY:	UNITS	SCALE	SHEET	REV
B	93016	Schurti	Mar.28,2004		APPD:	MAT'L:		MM	2 : 1	1 OF 1	B
A	920619	Willson	Jun.09,2003		CHKD:	FINISH:		MM	2 : 1	1 OF 1	B
REV	ECN NO.	NAME	DATE	DRWN:	CHKD:	FINISH:	Q'TY:	UNITS	SCALE	SHEET	REV

1 2 3 4 5 6 7 8 CUSTOMER