

# High Speed LDO Regulator with ON/OFF Control

## FEATURES

- Output Current up to 150 mA (300 mA for IXD1209E/H type)
- Output Voltage Range from 0.9 V to 6.0 V with 0.05 V increments
- Output Voltage Accuracy  $\pm 2\%$  (at  $V_{OUT} > 1.5$  V),  $\pm 30$  mV (at  $V_{OUT} \leq 1.5$  V)
- Dropout Voltage 60 mV @ 30 mA , 0.20 V @ 100 mA
- Maximum Operating Voltage 10 V
- Low Power Consumption at 25  $\mu$ A typical
- Standby Current less than 0.1  $\mu$ A typical
- Ripple Rejection 70 dB at 10 kHz
- Low ESR Ceramic Capacitor compatible
- Operating Ambient Temperature - 40 + 85°C
- Packages : SOT-25, SOT-89-5 , and USP-6B
- EU RoHS Compliant, Pb Free

## APPLICATIONS

- Mobile phones
- Cameras, VCRs
- Various portable equipment
- Reference voltage source

## DESCRIPTION

IXD1209/12 are highly precise, low noise positive voltage LDO regulators manufactured using CMOS processes. The IXD1209/12 have a high ripple rejection factor and low dropout. They consist of a voltage reference, an error amplifier, a current limiter, a phase compensation circuit, and a driver transistor.

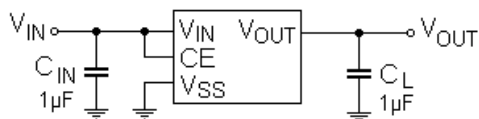
Output voltage is selectable in 0.05V increments within a range of 0.9 V ~ 6.0 V.

The IXD1209/12 are compatible with low ESR ceramic capacitors, and due excellent transient response, they maintain stability even during significant load fluctuations. The current limiter's foldback circuit operates also as a short circuit protection.

The chip enable (CE) function allows disable IC, greatly reducing power consumption.

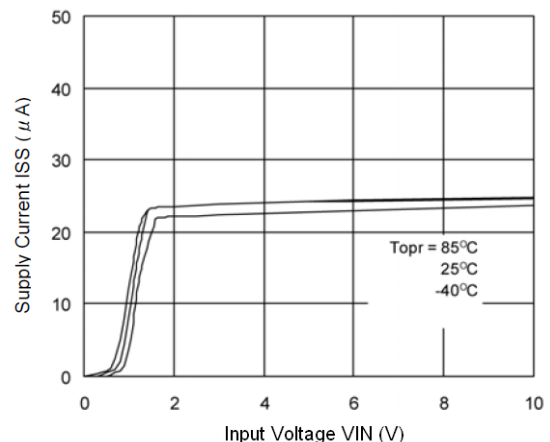
This regulator is available in SOT-25, SOT-89-5, and USP-6B packages.

## TYPICAL APPLICATION CIRCUIT



## TYPICAL PERFORMANCE CHARACTERISTIC

Supply Current vs. Input Voltage (IXD1209/12 F122)



## ABSOLUTE MAXIMUM RATINGS

PARAMETER		SYMBOL	RATINGS	UNITS
Input Voltage		$V_{IN}$	- 0.3 ~ 12.0	V
Output Current		$I_{OUT}$	500 <sup>1)</sup>	mA
Output Voltage		$V_{OUT}$	- 0.3 ~ $V_{IN} + 0.3$	V
CE Input Voltage		$V_{CE}$	- 0.3 ~ 12.0	V
Power Dissipation <sup>2)</sup>	SOT-25	$P_D$	250 (600 PCB mounted)	mW
	SOT-89-5		500 (1300 PCB mounted)	
	USP-6C		120 (1000 PCB mounted)	
Operating Temperature Range		$T_{OPR}$	- 40 ~ + 85	°C
Storage Temperature Range		$T_{STG}$	- 55 ~ +125	°C

All voltages are in respect to  $V_{SS}$

1)  $I_{OUT} \leq Pd / (V_{IN} - V_{OUT})$

2) This is a reference data taken by using the test board. Please refer to page 21 to 23 for details.

## ELECTRICAL OPERATING CHARACTERISTICS

IXD1209/12 Type A, B

$T_a = 25^\circ\text{C}$

PARAMETER		SYMBOL	CONDITIONS	MIN.	TYP.	MAX.	UNIT	CIRCUIT
Output Voltage (2%) <sup>3)</sup>		$V_{OUT(E)}^{1)}$	$I_{OUT} = 30\text{ mA}$	$V_{OUT(T)} \times 0.98$	$V_{OUT(T)}$	$V_{OUT(T)} \times 1.02$	V	①
Output Voltage (1%) <sup>4)</sup>				$V_{OUT(T)} \times 0.99$	$V_{OUT(T)}$	$V_{OUT(T)} \times 1.01$		
Maximum Output Current		$I_{OUT\_MAX}$	$V_{IN} = 2.3\text{ V}, V_{OUT} \geq 1.17\text{ V}$	60			mA	①
Load Regulation		$\Delta V_{OUT}$	$1\text{ mA} \leq I_{OUT} \leq 100\text{ mA}$		15	50	mV	①
Dropout Voltage <sup>2)</sup>		$V_{DIF1}$	$I_{OUT} = 30\text{ mA}$		E-1		mV	①
				$V_{DF2}$	$I_{OUT} = 100\text{ mA}$			
Supply Current	Type A	$I_{SS}$	$V_{CE} = V_{IN} = V_{OUT(E)} + 1.0\text{ V}$ When $V_{OUT} \leq 0.95\text{ V}, V_{CE} = V_{IN} = 2.0\text{ V}$		28	55	$\mu\text{A}$	②
	Type B				25	50		
Standby Current		$I_{STB}$	$V_{CE} = 0\text{ V}$		0.01	0.10	$\mu\text{A}$	②
Line Regulation		$\frac{\Delta V_{OUT}}{V_{OUT} * \Delta V_{IN}}$	$V_{OUT(E)} + 1.0\text{ V} \leq V_{IN} \leq 10\text{ V}$ When $V_{OUT} \leq 0.95\text{ V}, 2.0\text{ V} \leq V_{IN} \leq 10\text{ V}$ $I_{OUT} = 30\text{ mA},$ When $V_{OUT} \leq 1.75\text{ V}, I_{OUT} = 10\text{ mA}$		0.01	0.20	%/V	①
Input Voltage		$V_{IN}$		2		10	V	
Output Voltage Temperature Characteristics		$\frac{\Delta V_{OUT}}{V_{OUT} * \Delta T_{OPR}}$	$I_{OUT} = 30\text{ mA}$ $- 40^\circ\text{C} \leq T_{OPR} \leq 85^\circ\text{C}$		$\pm 100$		ppm/°C	①
Power Supply Rejection Ratio		PSRR	$V_{IN} = (V_{OUT(E)} + 1.0\text{ V}) + 1\text{ Vp-p}_{AC}$ When $V_{OUT} \leq 1.5\text{ V},$ $V_{IN} = 2.5\text{ V} + 1.0\text{ Vp-p}_{AC},$ $I_{OUT} = 10\text{ mA}, f = 10\text{ kHz}$		70		dB	④
Current Limit		$I_{LIM}$	$V_{IN} = V_{OUT(E)} + 1.0\text{ V}, V_{CE} = 0\text{ V}$ When $V_{OUT} \leq 1.75\text{ V}, V_{IN} = V_{OUT(E)} + 2.0\text{ V}$		300		mA	①
Short Current		$I_{SHORT}$	$V_{CE} = 0\text{ V},$ When $V_{OUT} \leq 1.75\text{ V},$ $V_{IN} = V_{OUT(E)} + 2.0\text{ V}$		50		mA	①
CE "H" Level Voltage		$V_{CEH}$		1.6		$V_{IN}$	V	①
CE "L" Level Voltage		$V_{CEL}$				0.25	V	①
CE "H" Level Current	Type A	$I_{CEH}$	$V_{CE} = V_{IN} = V_{OUT(E)} + 1.0\text{ V}$ When $V_{OUT} \leq 0.95\text{ V}, V_{CE} = V_{IN} = 2.0\text{ V}$	0.8		5.0	$\mu\text{A}$	②
	Type B			-0.1		0.1		
CE "L" Level Current		$I_{CEL}$	$V_{CE} = 0\text{ V}, V_{IN} = V_{OUT(E)} + 1.0\text{ V}$ When $V_{OUT} \leq 0.95\text{ V}, V_{CE} = V_{IN} = 2.0\text{ V}$	-0.1		0.1	$\mu\text{A}$	②

### NOTE:

- Unless otherwise stated,  $V_{IN} = V_{OUT(T)} + 1.0\text{ V}$ . If  $V_{OUT}$  is less than 0.95 V,  $V_{IN} = 2.0\text{ V}$ ;  $V_{OUT(T)}$  is Nominal output voltage and  $V_{OUT(E)}$  is Effective output voltage, (i.e. the output voltage when " $V_{OUT(T)} + 1.0\text{V}$ " is provided at the  $V_{IN}$  pin, while maintaining a certain  $I_{OUT}$  value).
- $V_{DIF} = \{V_{IN} - V_{OUT}\}$ , where  $V_{IN1}$  is the input voltage when  $V_{OUT} = 0.98 V_{OUT(T)}$  appears, while input voltage gradually decreases
- If  $V_{OUT(T)}$  is less than 1.45 V, MIN. =  $V_{OUT(T)} - 30\text{ mV}$ , MAX. =  $V_{OUT(T)} + 30\text{ mV}$
- For products with  $V_{OUT(T)} > 3.0\text{ V}$  only

**ELECTRICAL OPERATING CHARACTERISTICS (CONTINUED)**

IXD1209/12 Type C, D

Ta = 25 °C

PARAMETER	SYMBOL	CONDITIONS	MIN.	TYP.	MAX.	UNIT	CIRCUIT
Output Voltage (2%) <sup>3)</sup>	V <sub>OUT(E)</sub> <sup>1)</sup>	I <sub>OUT</sub> = 30 mA	V <sub>OUT(T)</sub> X 0.98	V <sub>OUT(T)</sub>	V <sub>OUT(T)</sub> X 1.02	V	①
Output Voltage (1%) <sup>4)</sup>			V <sub>OUT(T)</sub> X 0.99	V <sub>OUT(T)</sub>	V <sub>OUT(T)</sub> X 1.01		
Maximum Output Current	I <sub>OUT_MAX</sub>	V <sub>IN</sub> = 2.3 V, V <sub>OUT</sub> ≥ 1.17 V	150			mA	①
Load Regulation	ΔV <sub>OUT1</sub>	1 mA ≤ I <sub>OUT</sub> ≤ 100 mA		15	50	mV	①
Dropout Voltage <sup>2)</sup>	V <sub>DIF1</sub>	I <sub>OUT</sub> = 30 mA		E-1		mV	①
	V <sub>DF2</sub>	I <sub>OUT</sub> = 100mA		E-2			
Supply Current	Type C	V <sub>CE</sub> = V <sub>IN</sub> = V <sub>OUT(E)</sub> + 1.0 V When V <sub>OUT</sub> ≤ 0.95 V, V <sub>CE</sub> = V <sub>IN</sub> = 2.0 V		28	55	μA	②
	Type D			25	50		
Standby Current	I <sub>STB</sub>	V <sub>CE</sub> = 0 V		0.01	0.10	μA	②
Line Regulation	$\frac{\Delta V_{OUT}}{V_{OUT} * \Delta V_{IN}}$	V <sub>OUT(E)</sub> + 1.0 V ≤ V <sub>IN</sub> ≤ 10 V When V <sub>OUT</sub> ≤ 0.95 V, 2.0 V ≤ V <sub>IN</sub> ≤ 10 V I <sub>OUT</sub> = 30 mA, When V <sub>OUT</sub> ≤ 1.75 V, I <sub>OUT</sub> = 10 mA		0.01	0.20	%/V	①
Input Voltage	V <sub>IN</sub>		2		10	V	
Output Voltage Temperature Characteristics	$\frac{\Delta V_{OUT}}{V_{OUT} * \Delta T_{OPR}}$	I <sub>OUT</sub> = 30 mA - 40 °C ≤ T <sub>OPR</sub> ≤ 85 °C		± 100		ppm/°C	①
Power Supply Rejection Ratio	PSRR	V <sub>IN</sub> = (V <sub>OUT(E)</sub> + 1.0 V) + 1 Vp-p <sub>AC</sub> When V <sub>OUT</sub> ≤ 1.5 V, V <sub>IN</sub> = 2.5 V + 1.0 Vp-p <sub>AC</sub> , I <sub>OUT</sub> = 10 mA, f = 10 kHz		70		dB	④
Current Limit	I <sub>LIM</sub>	V <sub>IN</sub> = V <sub>OUT(E)</sub> + 1.0 V, V <sub>CE</sub> = 0 V When V <sub>OUT</sub> ≤ 1.75 V, V <sub>IN</sub> = V <sub>OUT(E)</sub> + 2.0 V		300		mA	①
Short Current	I <sub>SHORT</sub>	V <sub>CE</sub> = 0 V, When V <sub>OUT</sub> ≤ 1.75 V, V <sub>IN</sub> = V <sub>OUT(E)</sub> + 2.0 V		50		mA	①
CE "H" Level Voltage	V <sub>CEH</sub>		1.6		V <sub>IN</sub>	V	①
CE "L" Level Voltage	V <sub>CEL</sub>				0.25	V	①
CE "H" Level Current	I <sub>CEH</sub>	V <sub>CE</sub> = V <sub>IN</sub> = V <sub>OUT(E)</sub> + 1.0 V When V <sub>OUT</sub> ≤ 0.95 V, V <sub>CE</sub> = V <sub>IN</sub> = 2.0 V	-0.1		0.1	μA	②
CE "L" Level Current	Type C	V <sub>CE</sub> = 0 V, V <sub>IN</sub> = V <sub>OUT(E)</sub> + 1.0 V When V <sub>OUT</sub> ≤ 0.95 V, V <sub>CE</sub> = V <sub>IN</sub> = 2.0 V	-5.0		-0.8	μA	②
	Type D		-0.1		0.1		

**NOTE:**

- 1) Unless otherwise stated, V<sub>IN</sub> = V<sub>OUT(T)</sub> + 1.0 V. If V<sub>OUT</sub> is less than 0.95 V, V<sub>IN</sub> = 2.0 V; V<sub>OUT(T)</sub> is Nominal output voltage and V<sub>OUT(E)</sub> is Effective output voltage, (i.e. the output voltage when "V<sub>OUT(T)</sub> + 1.0V" is provided at the V<sub>IN</sub> pin, while maintaining a certain I<sub>OUT</sub> value).
- 2) V<sub>DIF</sub> = {V<sub>IN</sub> - V<sub>OUT</sub>}, where V<sub>IN1</sub> is the input voltage when V<sub>OUT</sub> = 0.98 V<sub>OUT(T)</sub> appears, while input voltage gradually decreases
- 3) If V<sub>OUT(T)</sub> is less than 1.45 V, MIN. = V<sub>OUT(T)</sub> - 30 mV, MAX. = V<sub>OUT(T)</sub> + 30 mV
- 4) For products with V<sub>OUT(T)</sub> > 3.0 V only.

**ELECTRICAL OPERATING CHARACTERISTICS (CONTINUED)**

IXD1209/12 Type E, F

Ta = 25 °C

PARAMETER		SYMBOL	CONDITIONS	MIN.	TYP.	MAX.	UNIT	CIRCUIT
Output Voltage (2%) <sup>3)</sup>		V <sub>OUT(E)</sub> <sup>1)</sup>	I <sub>OUT</sub> = 30 mA	V <sub>OUT(T)</sub> × 0.98	V <sub>OUT(T)</sub> *	V <sub>OUT(T)</sub> × 1.02	V	①
Output Voltage (1%) <sup>4)</sup>				V <sub>OUT(T)</sub> × 0.99	V <sub>OUT(T)</sub> *	V <sub>OUT(T)</sub> × 1.01		
Maximum Output Current		I <sub>OUT_MAX</sub>	V <sub>IN</sub> = E-3 <sup>5)</sup>	E-4			mA	①
Load Regulation		ΔV <sub>OUT1</sub>	1 mA ≤ I <sub>OUT</sub> ≤ 100 mA		15	50	mV	①
		ΔV <sub>OUT2</sub>	1 mA ≤ I <sub>OUT</sub> ≤ 300 mA			100		
Dropout Voltage <sup>2)</sup>		V <sub>DIF1</sub>	I <sub>OUT</sub> = 30 mA		E-1		mV	①
		V <sub>DF2</sub>	I <sub>OUT</sub> = 100mA		E-2			
Supply Current	Type E	I <sub>SS</sub>	V <sub>CE</sub> = V <sub>IN</sub> = V <sub>OUT(E)</sub> + 1.0 V When V <sub>OUT</sub> ≤ 0.95 V, V <sub>CE</sub> = V <sub>IN</sub> = 2.0 V		28	55	μA	②
	Type F				25	50		
Standby Current		I <sub>STB</sub>	V <sub>CE</sub> = 0 V		0.01	0.10	μA	②
Line Regulation		$\frac{\Delta V_{OUT}}{V_{OUT} * \Delta V_{IN}}$	V <sub>OUT(E)</sub> + 1.0 V ≤ V <sub>IN</sub> ≤ 10 V When V <sub>OUT</sub> ≤ 0.95 V, 2.0 V ≤ V <sub>IN</sub> ≤ 10 V I <sub>OUT</sub> = 30 mA, When V <sub>OUT</sub> ≤ 1.75 V, I <sub>OUT</sub> = 10 mA		0.01	0.20	%/V	①
Input Voltage		V <sub>IN</sub>		2		10	V	
Output Voltage Temperature Characteristics		$\frac{\Delta V_{OUT}}{V_{OUT} * \Delta T_{OPR}}$	I <sub>OUT</sub> = 30 mA - 40 °C ≤ T <sub>OPR</sub> ≤ 85 °C		± 100		ppm/°C	①
Power Supply Rejection Ratio		PSRR	V <sub>IN</sub> = (V <sub>OUT(E)</sub> + 1.0 V) + 1 Vp-p <sub>AC</sub> When V <sub>OUT</sub> ≤ 1.5 V, V <sub>IN</sub> = 2.5 V + 1.0 Vp-p <sub>AC</sub> , I <sub>OUT</sub> = 10 mA, f = 10 kHz		70		dB	④
Current Limit		I <sub>LIM</sub>	V <sub>IN</sub> = V <sub>OUT(E)</sub> + 1.0 V, V <sub>CE</sub> = 0 V When V <sub>OUT</sub> ≤ 1.75 V, V <sub>IN</sub> = V <sub>OUT(E)</sub> + 2.0 V		380		mA	①
Short Current		I <sub>SHORT</sub>	V <sub>CE</sub> = 0 V, When V <sub>OUT</sub> ≤ 1.75 V, V <sub>IN</sub> = V <sub>OUT(E)</sub> + 2.0 V		50		mA	①
CE "H" Level Voltage		V <sub>CEH</sub>		1.6		V <sub>IN</sub>	V	①
CE "L" Level Voltage		V <sub>CEL</sub>				0.25	V	①
CE "H" Level Current	Type E	I <sub>CEH</sub>	V <sub>CE</sub> = V <sub>IN</sub> = V <sub>OUT(E)</sub> + 1.0 V When V <sub>OUT</sub> ≤ 0.95 V, V <sub>CE</sub> = V <sub>IN</sub> = 2.0 V	0.8		5.0	μA	②
	Type F			-0.1		0.1		
CE "L" Level Current		I <sub>CEL</sub>	V <sub>CE</sub> = 0 V, V <sub>IN</sub> = V <sub>OUT(E)</sub> + 1.0 V When V <sub>OUT</sub> ≤ 0.95 V, V <sub>CE</sub> = V <sub>IN</sub> = 2.0 V	-0.1		0.1	μA	②

**NOTE:**

- 1) Unless otherwise stated, V<sub>IN</sub> = V<sub>OUT(T)</sub> + 1.0 V. If V<sub>OUT</sub> is less than 0.95 V, V<sub>IN</sub> = 2.0 V; V<sub>OUT(T)</sub> is Nominal output voltage and V<sub>OUT(E)</sub> is Effective output voltage, (i.e. the output voltage when "V<sub>OUT(T)</sub> + 1.0V" is provided at the V<sub>IN</sub> pin, while maintaining a certain I<sub>OUT</sub> value).
- 2) V<sub>DIF</sub> = {V<sub>IN</sub> - V<sub>OUT</sub>}, where V<sub>IN1</sub> is the input voltage when V<sub>OUT</sub> = 0.98 V<sub>OUT(T)</sub> appears, while input voltage gradually decreases
- 3) If V<sub>OUT(T)</sub> is less than 1.45 V, MIN. = V<sub>OUT(T)</sub> - 30 mV, MAX. = V<sub>OUT(T)</sub> + 30 mV
- 4) For products with V<sub>OUT(T)</sub> > 3.0 V only
- 5) Refer to the "Dropout Voltage" table

**ELECTRICAL OPERATING CHARACTERISTICS (CONTINUED)**

IXD1209/12 Type G, H

Ta = 25 °C

PARAMETER	SYMBOL	CONDITIONS	MIN.	TYP.	MAX.	UNIT	CIRCUIT
Output Voltage (2%) <sup>3)</sup>	V <sub>OUT(E)</sub> <sup>1)</sup>	I <sub>OUT</sub> = 30 mA	V <sub>OUT(T)</sub> X 0.98	V <sub>OUT(T)</sub>	V <sub>OUT(T)</sub> X 1.02	V	①
Output Voltage (1%) <sup>4)</sup>			V <sub>OUT(T)</sub> X 0.99	V <sub>OUT(T)</sub>	V <sub>OUT(T)</sub> X 1.01		
Maximum Output Current	I <sub>OUT_MAX</sub>	V <sub>IN</sub> = E-3 <sup>5)</sup>	E-4			mA	①
Load Regulation	ΔV <sub>OUT1</sub>	1 mA ≤ I <sub>OUT</sub> ≤ 100 mA		15	50	mV	①
	ΔV <sub>OUT2</sub>	1 mA ≤ I <sub>OUT</sub> ≤ 300 mA			100		
Dropout Voltage <sup>2)</sup>	V <sub>DIF1</sub>	I <sub>OUT</sub> = 30 mA		E-1		mV	①
	V <sub>DF2</sub>	I <sub>OUT</sub> = 100mA		E-2			
Supply Current	Type G	V <sub>CE</sub> = V <sub>IN</sub> = V <sub>OUT(E)</sub> + 1.0 V When V <sub>OUT</sub> ≤ 0.95 V, V <sub>CE</sub> = V <sub>IN</sub> = 2.0 V		28	55	μA	②
	Type H			25	50		
Standby Current	I <sub>STB</sub>	V <sub>CE</sub> = 0 V		0.01	0.10	μA	②
Line Regulation	$\frac{\Delta V_{OUT}}{V_{OUT} * \Delta V_{IN}}$	V <sub>OUT(E)</sub> + 1.0 V ≤ V <sub>IN</sub> ≤ 10 V When V <sub>OUT</sub> ≤ 0.95 V, 2.0 V ≤ V <sub>IN</sub> ≤ 10 V I <sub>OUT</sub> = 30 mA, When V <sub>OUT</sub> ≤ 1.75 V, I <sub>OUT</sub> = 10 mA		0.01	0.20	%/V	①
Input Voltage	V <sub>IN</sub>		2		10	V	
Output Voltage Temperature Characteristics	$\frac{\Delta V_{OUT}}{V_{OUT} * \Delta T_{OPR}}$	I <sub>OUT</sub> = 30 mA - 40 °C ≤ T <sub>OPR</sub> ≤ 85 °C		± 100		ppm/°C	①
Power Supply Rejection Ratio	PSRR	V <sub>IN</sub> = (V <sub>OUT(E)</sub> + 1.0 V) + 1 Vp-p <sub>PAC</sub> When V <sub>OUT</sub> ≤ 1.5 V, V <sub>IN</sub> = 2.5 V + 1.0 Vp-p <sub>PAC</sub> , I <sub>OUT</sub> = 10 mA, f = 10 kHz		70		dB	④
Current Limit	I <sub>LIM</sub>	V <sub>IN</sub> = V <sub>OUT(E)</sub> + 1.0 V, V <sub>CE</sub> = 0 V When V <sub>OUT</sub> ≤ 1.75 V, V <sub>IN</sub> = V <sub>OUT(E)</sub> + 2.0 V		380		mA	①
Short Current	I <sub>SHORT</sub>	V <sub>CE</sub> = 0 V, When V <sub>OUT</sub> ≤ 1.75 V, V <sub>IN</sub> = V <sub>OUT(E)</sub> + 2.0 V		50		mA	①
CE "H" Level Voltage	V <sub>CEH</sub>		1.6		V <sub>IN</sub>	V	①
CE "L" Level Voltage	V <sub>CEL</sub>				0.25	V	①
CE "H" Level Current	I <sub>CEH</sub>	V <sub>CE</sub> = V <sub>IN</sub> = V <sub>OUT(E)</sub> + 1.0 V When V <sub>OUT</sub> ≤ 0.95 V, V <sub>CE</sub> = V <sub>IN</sub> = 2.0 V	-0.1		0.1	μA	②
CE "L" Level Current	Type G	V <sub>CE</sub> = 0 V, V <sub>IN</sub> = V <sub>OUT(E)</sub> + 1.0 V When V <sub>OUT</sub> ≤ 0.95 V, V <sub>CE</sub> = V <sub>IN</sub> = 2.0 V	-5.0		-0.8	μA	②
	Type H		-0.1		0.1		

**NOTE:**

- 1) Unless otherwise stated, V<sub>IN</sub> = V<sub>OUT(T)</sub> + 1.0 V. If V<sub>OUT</sub> is less than 0.95 V, V<sub>IN</sub> = 2.0 V; V<sub>OUT(T)</sub> is Nominal output voltage and V<sub>OUT(E)</sub> is Effective output voltage, (i.e. the output voltage when "V<sub>OUT(T)</sub> + 1.0V" is provided at the V<sub>IN</sub> pin, while maintaining a certain I<sub>OUT</sub> value).
- 2) V<sub>DIF</sub> = {V<sub>IN</sub> - V<sub>OUT</sub>}, where V<sub>IN1</sub> is the input voltage when V<sub>OUT</sub> = 0.98 V<sub>OUT(T)</sub> appears, while input voltage gradually decreases
- 3) If V<sub>OUT(T)</sub> is less than 1.45 V, MIN. = V<sub>OUT(T)</sub> - 30 mV, MAX. = V<sub>OUT(T)</sub> + 30 mV
- 4) For products with V<sub>OUT(T)</sub> > 3.0 V only.
- 5) Refer to the "Dropout Voltage" table

**ELECTRICAL OPERATING CHARACTERISTICS (CONTINUED)**

Dropout Voltage for products with  $\pm 2\%$  accuracy

SYMBOL	E-0		E-1		E-2	
	OUTPUT VOLTAGE, V ( $\pm 2\%$ )		DROPOUT VOLTAGE1, mV $I_{OUT} = 30\text{ mA}$		DROPOUT VOLTAGE 2, mV $I_{OUT} = 100\text{ mA}$	
	$V_{OUT}$		$V_{DIF1}$		$V_{DIF2}$	
$V_{OUT(T)}$	MIN.	MAX.	TYP.	MAX.	TYP.	MAX.
0.90	0.870	0.930	1100	1110	1150	1200
0.95	0.920	0.980				
1.00	0.970	1.030	1000	1010	1050	1100
1.05*	1.020	1.080				
1.10*	1.070	1.130	900	910	950	1000
1.15*	1.120	1.180				
1.20*	1.170	1.230	800	810	850	900
1.25*	1.220	1.280				
1.30*	1.270	1.330	700	710	750	800
1.35*	1.320	1.380				
1.40*	1.370	1.430	600	610	650	700
1.45*	1.420	1.480				
1.50*	1.470	1.530	500	510	550	600
1.55*	1.519	1.581				
1.60*	1.568	1.632	400	410	500	550
1.65*	1.617	1.683				
1.70*	1.666	1.734	300	310	400	450
1.75*	1.715	1.785				
1.80*	1.764	1.836	200	210	300	400
1.85*	1.813	1.887				
1.90*	1.862	1.938	120	150	280	380
1.95*	1.911	1.989				
2.00	1.960	2.040	80	120	240	350
2.05	2.009	2.091				330
2.10	2.058	2.142				310
2.15	2.107	2.193				
2.20	2.156	2.244				
2.25	2.205	2.295				
2.30	2.254	2.346				
2.35	2.303	2.397				
2.40	2.352	2.448				
2.45	2.401	2.499				
2.50	2.450	2.550	70	100	220	290
2.55	2.499	2.601				
2.60	2.548	2.652				
2.65	2.597	2.703				
2.70	2.646	2.754				
2.75	2.695	2.805				
2.80	2.744	2.856				
2.85	2.793	2.907				
2.90	2.842	2.958				
2.95	2.891	3.009				
3.00	2.940	3.060	60	90	200	270
3.05	2.989	3.111				
3.10	3.038	3.162				
3.15	3.087	3.213				
3.20	3.136	3.264				
3.25	3.185	3.315				
3.30	3.234	3.366				
3.35	3.283	3.417				
3.40	3.332	3.468				
3.45	3.381	3.519				
3.50	3.430	3.570				
3.55	3.479	3.621				

\* Required operating voltage is  $V_{IN} \geq 2.0\text{ V}$  minimum.  $V_{DIF} = 2.0\text{ V} - V_{OUT(T)}$  minimum

**ELECTRICAL OPERATING CHARACTERISTICS (CONTINUED)**

Dropout Voltage for products with ± 2% accuracy

SYMBOL	E-0		E-1		E-2	
NOMINAL VOLTAGE	OUTPUT VOLTAGE, V (± 2%)		DROPOUT VOLTAGE1, mV I <sub>OUT</sub> = 30 mA		DROPOUT VOLTAGE 2, mV I <sub>OUT</sub> = 100 mA	
	V <sub>OUT</sub>		V <sub>DIF1</sub>		V <sub>DIF2</sub>	
V <sub>OUT</sub> (T)	MIN.	MAX.	TYP.	MAX.	TYP.	MAX.
3.60	3.528	3.672	60	90	200	250
3.65	3.577	3.723				
3.70	3.626	3.774				
3.75	3.675	3.825				
3.80	3.724	3.876				
3.85	3.773	3.927				
3.90	3.822	3.978				
3.95	3.871	4.029				
4.00	3.920	4.080				
4.05	3.969	4.131				
4.10	4.018	4.182				
4.15	4.067	4.233				
4.20	4.116	4.284				
4.25	4.165	4.335				
4.30	4.214	4.386				
4.35	4.263	4.437				
4.40	4.312	4.488				
4.45	4.361	4.539				
4.50	4.410	4.590				
4.55	4.459	4.641				
4.60	4.508	4.692				
4.65	4.557	4.743				
4.70	4.606	4.794				
4.75	4.655	4.845				
4.80	4.704	4.896				
4.85	4.753	4.947				
4.90	4.802	4.998				
4.95	4.851	5.049				
5.00	4.900	5.100				
5.05	4.949	5.151				
5.10	4.998	5.202				
5.15	5.047	5.253				
5.20	5.096	5.304				
5.25	5.145	5.355				
5.30	5.194	5.406				
5.35	5.243	5.457				
5.40	5.292	5.508				
5.45	5.341	5.559				
5.50	5.390	5.610				
5.55	5.439	5.661				
5.60	5.488	5.712				
5.65	5.537	5.763				
5.70	5.586	5.814				
5.75	5.635	5.865				
5.80	5.684	5.916				
5.85	5.733	5.967				
5.90	5.782	6.018				
5.95	5.831	6.069				
6.00	5.880	6.120				
			50	70	160	210

## ELECTRICAL OPERATING CHARACTERISTICS (CONTINUED)

Output Voltage for products with  $\pm 1\%$  accuracy

SYMBOL	E-0	
	OUTPUT VOLTAGE, V (1%)	
	VOUT	
V <sub>OUT(T)</sub>	MIN.	MAX.
3.00	2.970	3.030
3.05	3.020	3.081
3.10	3.069	3.131
3.15	3.119	3.182
3.20	3.168	3.232
3.25	3.218	3.283
3.30	3.267	3.333
3.35	3.317	3.384
3.40	3.366	3.434
3.45	3.416	3.485
3.50	3.465	3.535
3.55	3.515	3.586
3.60	3.564	3.636
3.65	3.614	3.687
3.70	3.663	3.737
3.75	3.713	3.788
3.80	3.762	3.838
3.85	3.812	3.889
3.90	3.861	3.939
3.95	3.911	3.990
4.00	3.960	4.040
4.05	4.010	4.091
4.10	4.059	4.141
4.15	4.109	4.192
4.20	4.158	4.242
4.25	4.208	4.293
4.30	4.257	4.343
4.35	4.307	4.394
4.40	4.356	4.444
4.45	4.405	4.494
4.50	4.455	4.545

SYMBOL	E-0	
	OUTPUT VOLTAGE, V (1%)	
	VOUT	
V <sub>OUT(T)</sub>	MIN.	MAX.
4.55	4.505	4.596
4.60	4.554	4.646
4.65	4.604	4.697
4.70	4.653	4.747
4.75	4.703	4.798
4.80	4.752	4.848
4.85	4.802	4.899
4.90	4.851	4.949
4.95	4.901	5.000
5.00	4.950	5.050
5.05	4.000	5.101
5.10	4.049	5.151
5.15	4.099	5.202
5.20	4.148	5.252
5.25	5.198	5.303
5.30	5.247	5.353
5.35	5.297	5.404
5.40	5.346	5.454
5.45	5.396	5.505
5.50	5.445	5.555
5.55	5.495	5.606
5.60	5.544	5.656
5.65	5.594	5.707
5.70	5.643	5.757
5.75	5.693	5.808
5.80	5.742	5.858
5.85	5.792	5.909
5.90	5.841	5.959
5.95	5.891	6.010
6.00	5.940	6.060

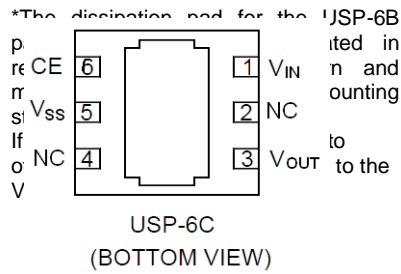
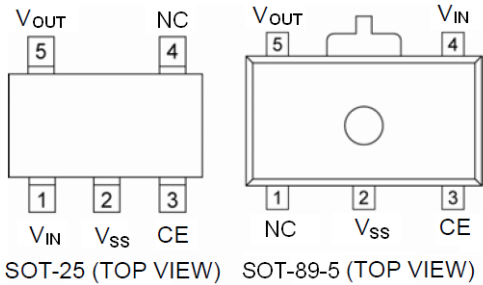
### Conditions

SYMBOL	E-3	E-4
NOMINAL OUTPUT VOLTAGE, V	INPUT VOLTAGE, V	MAXIMUM OUTPUT CURRENT, (mA)
V <sub>OUT(T)</sub>	V <sub>IN</sub>	MIN VALUE
0.90 ~ 0.95	2.5	260
1.00 ~ 1.05	2.5	260
1.10 ~ 1.15	2.6	270
1.20 ~ 1.25	2.7	290
1.30 ~ 1.35	2.8	300
1.40 ~ 1.45	2.9	
1.50 ~ 1.95	3.0	
2.00 ~ 6.00	V <sub>OUT(T)</sub> + 1.0	

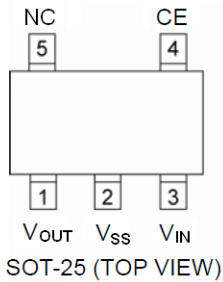


## PIN CONFIGURATION

IXD1209



IXD1212



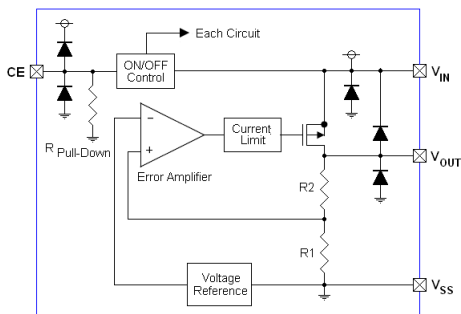
## PIN ASSIGNMENT

PIN NUMBER				PIN NAME	FUNCTIONS
IXD1209		IXD1212			
SOT-25	SOT-89 5	USP-6B	SOT-25		
1	4	1	3	V <sub>IN</sub>	Power Input
2	2	5	2	V <sub>SS</sub>	Ground
3	3	6	4	CE	ON/OFF Control
4	1	2, 4	5	NC	No Connection
5	5	3	1	V <sub>OUT</sub>	Output Voltage

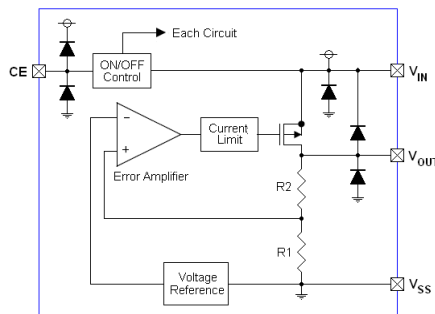
## CE PIN FUNCTION

IC TYPE	CE PIN STATE	IC STATE
A, B, E, F	H	ON
	L	OFF
C, D, G, H	H	OFF
	L	ON

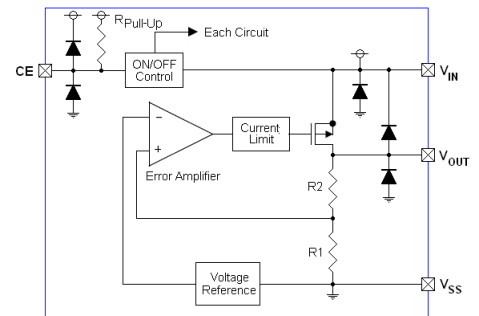
## BLOCK DIAGRAMS



IXD1209/12 Type A, E



IXD1209/12 Type B, D, F, H



IXD1209/12 Type C, G

Diodes inside the circuits are ESD protection diodes and parasitic diodes.

## BASIC OPERATION

The Error Amplifier of the IXD1209/12 series monitors output voltage divided by internal resistors R1 & R2 and compares it with the internal Reference Voltage (see Block Diagram above). The output signal from error amplifier drives gate of the P-channel MOSFET, which is connected to the  $V_{OUT}$  pin and operates as a series voltage regulator.

The Current Limit and Short Protection circuits monitor level of the output current. The CE pin allows shutdown internal circuitry to minimize power consumption.

### Low ESR Capacitors

An internal phase compensation circuit guarantees stable IXD1209/12 operation even if output capacitors with low ESR are used. However, connect the output capacitor  $C_L$  as close to the  $V_{OUT}$  and the  $V_{SS}$  pins as possible to prevent effectiveness of the phase compensation from degrade. The  $C_L$  capacitance value should be at least  $1\mu\text{F}$ . In case the capacitor depends on the bias and temperature, make sure that actual capacitance is maintained at operating voltage and temperature range. In addition, an input capacitor  $C_{IN} \geq 0.1\mu\text{F}$  between the  $V_{IN}$  and  $V_{SS}$  pins should be used to ensure a stable input power.

### Current Limiter, Short-Circuit Protection

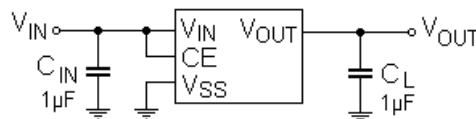
The IXD1209/12 series include a combination of a fixed current limiter circuit & a foldback circuit, which aid the operations of the current limiter and circuit protection. When the load current reaches the current limit level, the fixed current limiter circuit activates and output voltage drops. Because of this drop, the foldback circuit activates too, and output voltage drops further decreasing output current. When the output pin is shorted, a current of about 50 mA flows.

### CE Pin

The CE pin allows shutdown internal circuitry to minimize power consumption. In shutdown mode, output at the  $V_{OUT}$  pin is pulled down to the  $V_{SS}$  level via R1 & R2. The operational logic of the CE pin is selectable (please, refer to the CE PIN FUNCTION Table above).

Note that the standard IXD1209/12B type CE input is an Active High/No Pull Down and operations will become unstable, if the CE pin is open. CE pin should be used with either  $V_{IN}$  or  $V_{SS}$  voltage. If this IC is used with some intermediate voltage at CE pin, supply current may increase due through current in the IC's internal circuitry.

## TYPICAL APPLICATION CIRCUIT



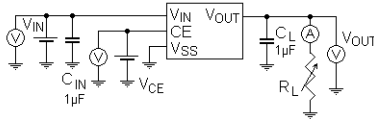
The output capacitor  $C_L \geq 1\mu\text{F}$  should be connected between the output pin ( $V_{OUT}$ ) and the  $V_{SS}$  pin for stable regulator's operation. Ceramic capacitors with low ESR are recommended.

## LAYOUT AND USE CONSIDERATIONS

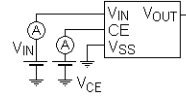
1. Mount external component as close to the IC as possible and use thick, short connecting traces to reduce the circuit impedance.
2. The IC may malfunction if absolute maximum ratings are exceeded.
3. If power source of this regulator is a high impedance device with impedance of  $10\Omega$  or more, an input capacitor  $C_{IN} \geq 1\mu\text{F}$  should be used to prevent oscillations.
4. In case of high output current, increasing the input capacitor value can stabilize operations.
5. Oscillations may occur also, if the input capacitor value is not enough to reduce the input impedance and the output capacitor  $C_L$  is large. In such case, operations can be stabilized by either increasing the input capacitor or reducing the output capacitor.
6. During start-up, IC provides constant current until  $V_{OUT} = V_{OUT(T)}$ .
7. Please ensure that output current  $I_{OUT}$  is less than  $P_D / (V_{IN} - V_{OUT})$ , where  $P_D$  is a rated power dissipation value of the package shown at ABSOLUTE MAXIMUM RATING table to not exceed it.

## TEST CIRCUITS

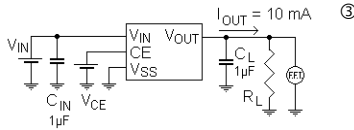
Circuit ①



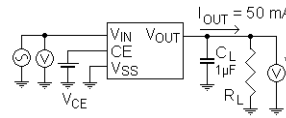
Circuit ②



Circuit ③



Circuit ④



$$V_{IN} = V_{OUT} + 1.0 V_{DC} + 1.0 V_{p-pAC}, \text{ if } V_{OUT} \leq 1.5 V, V_{IN} = 2.5 V_{DC} + 1.0 V_{p-pAC}$$

\* Each Test Circuit,  $V_{CE}$  (CE pin Voltage)

IC Active State

IXD1209/12, Type A, B, E, F:  $V_{CE} = V_{IN}$

IXD1209/12, Type C, D, G, H:  $V_{CE} = V_{SS}$

IC in Standby mode

IXD1209/12, Type A, B, E, F:  $V_{CE} = V_{SS}$

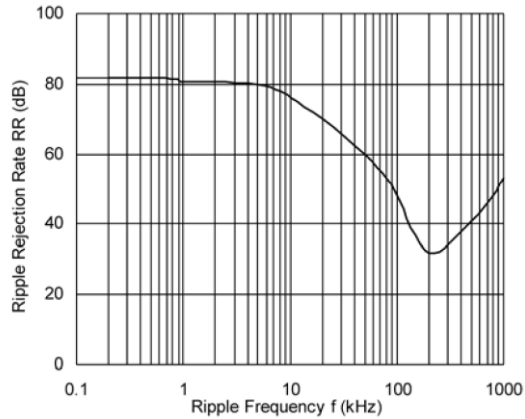
IXD1209/12, Type C, D, G, H:  $V_{CE} = V_{IN}$

## TYPICAL PERFORMANCE CHARACTERISTICS

### (1) Ripple rejection Ratio

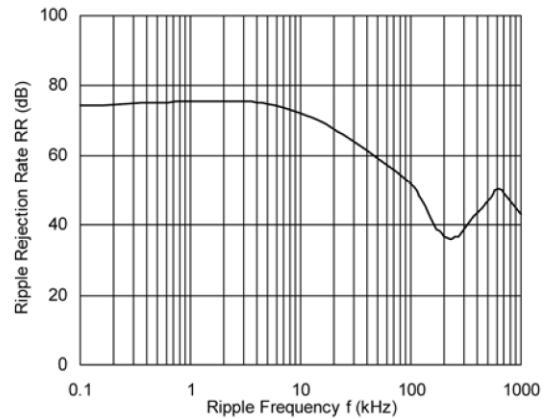
#### IXD1209/12 BF302

$V_{IN} = 4 V_{DC} + 1 V_{p-pAC}$ ,  $I_{OUT} = 30 \text{ mA}$ ,  $C_L = 1 \mu\text{F}$  (ceramic)



#### IXD1209/12 B/F122

$V_{IN} = 2.5 V_{DC} + 1 V_{p-pAC}$ ,  $I_{OUT} = 30 \text{ mA}$ ,  $C_L = 1 \mu\text{F}$  (ceramic)



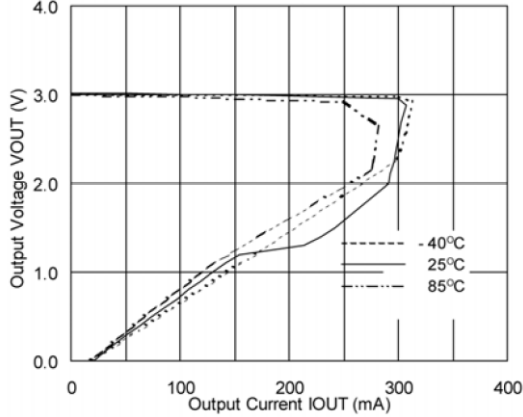
**TYPICAL PERFORMANCE CHARACTERISTICS (Continued)**

(2) Output Voltage vs Output Current

Topr = 25 °C

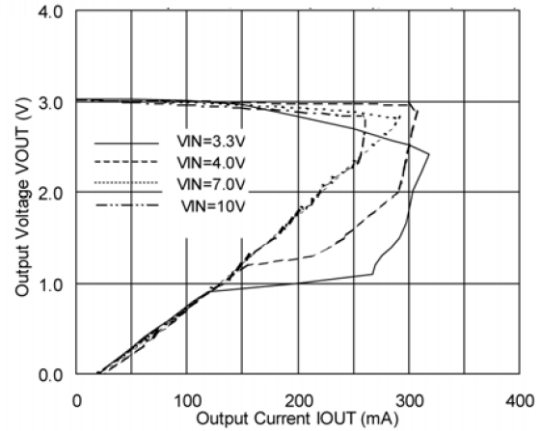
**IXD1209/12 B302**

C<sub>IN</sub> = C<sub>L</sub> = 1μF, (ceramic), V<sub>IN</sub> = 4.0 V



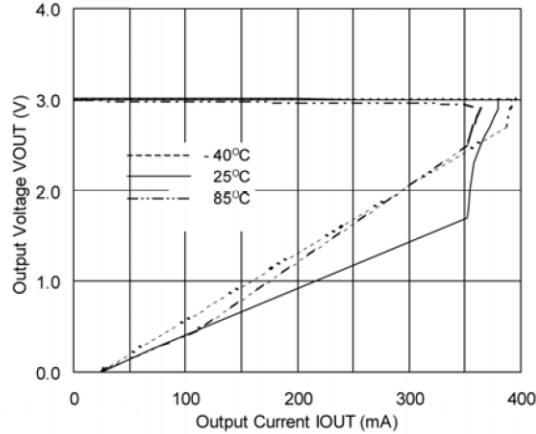
**IXD1209/12 B302**

C<sub>IN</sub> = C<sub>L</sub> = 1μF, (ceramic), Ta = 25°C



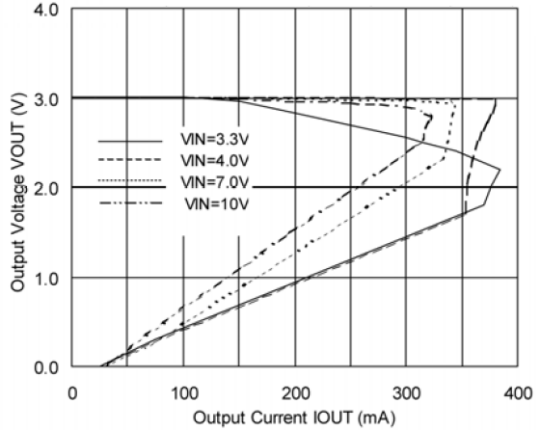
**IXD1209/12 F302**

C<sub>IN</sub> = C<sub>L</sub> = 1μF, (ceramic), V<sub>IN</sub> = 4.0 V



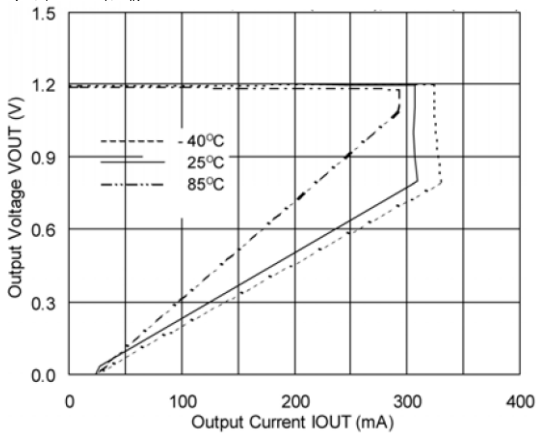
**IXD1209/12 F302**

C<sub>IN</sub> = C<sub>L</sub> = 1μF, (ceramic), Ta = 25°C



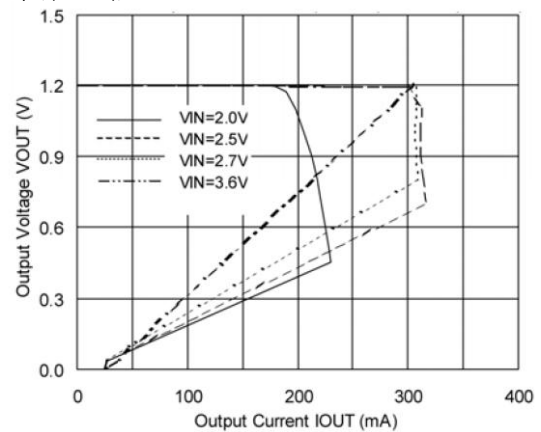
**IXD1209/12 B122**

C<sub>IN</sub> = C<sub>L</sub> = 1μF, (ceramic), V<sub>IN</sub> = 2.7 V



**IXD1209/12 B122**

C<sub>IN</sub> = C<sub>L</sub> = 1μF, (ceramic), Ta = 25°C



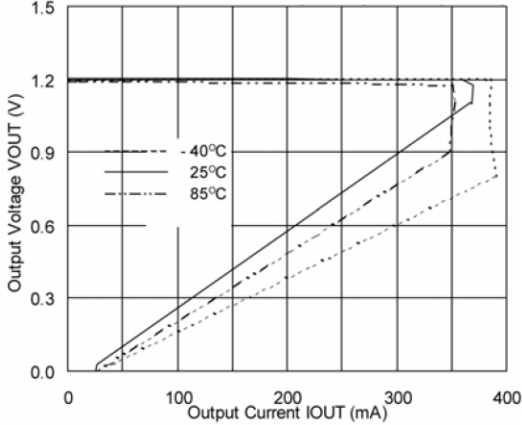
**TYPICAL PERFORMANCE CHARACTERISTICS (Continued)**

(2) Output Voltage vs. Output Current (Continue)

$T_{opr} = 25^{\circ}C$

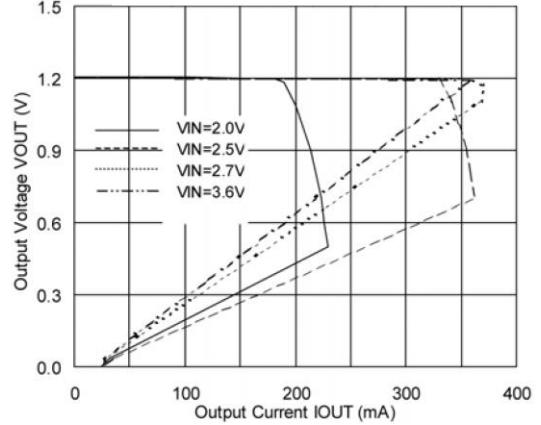
**IXD1209/12 F122**

$C_{IN} = C_L = 1\mu F$ , (ceramic),  $V_{IN} = 2.7V$



**IXD1209/12 F122**

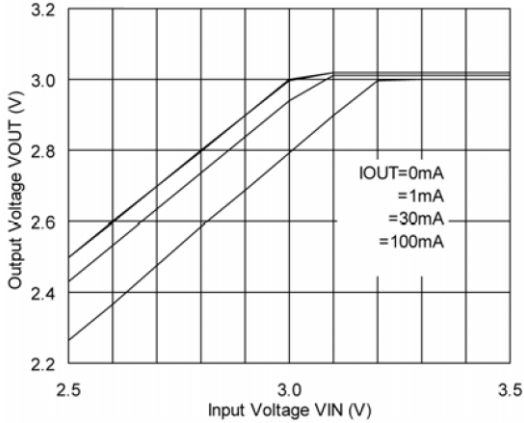
$C_{IN} = C_L = 1\mu F$ , (ceramic),  $T_a = 25^{\circ}C$



(3) Output Voltage vs. Input Voltage

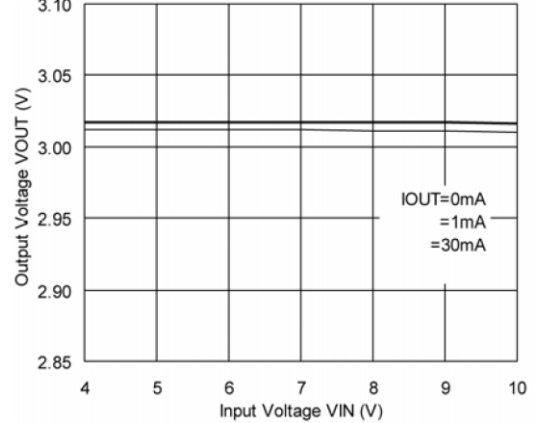
**IXD1209/12 F302**

$C_{IN} = C_L = 1\mu F$ , (ceramic),  $T_a = 25^{\circ}C$



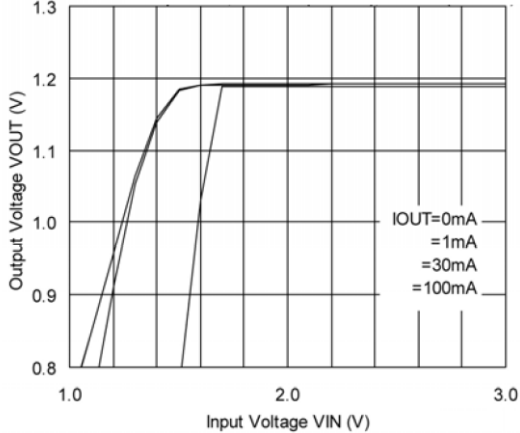
**IXD1209/12 F302**

$C_{IN} = C_L = 1\mu F$ , (ceramic),  $T_a = 25^{\circ}C$



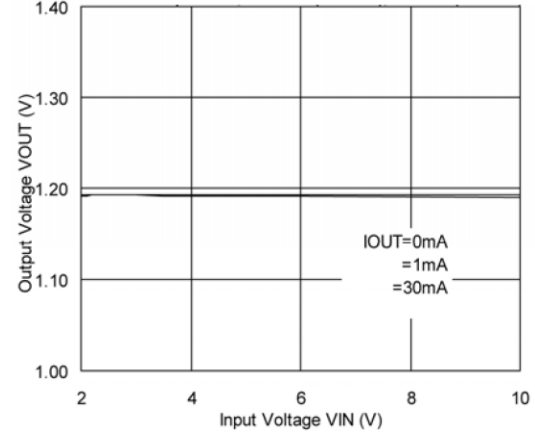
**IXD1209/12 F302**

$C_{IN} = C_L = 1\mu F$ , (ceramic),  $T_a = 25^{\circ}C$



**IXD1209/12 F302**

$C_{IN} = C_L = 1\mu F$ , (ceramic),  $T_a = 25^{\circ}C$



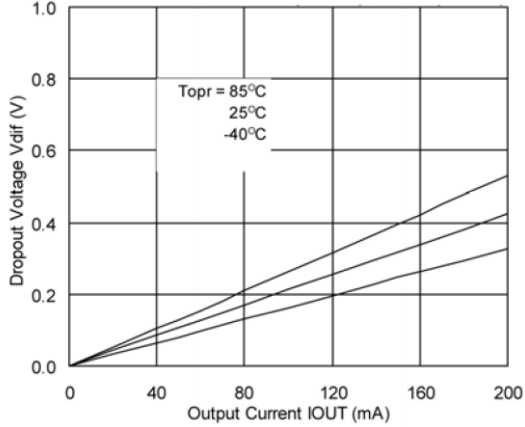
**TYPICAL PERFORMANCE CHARACTERISTICS (Continued)**

(4) Dropout Voltage vs. Output Current

Topr = 25 °C

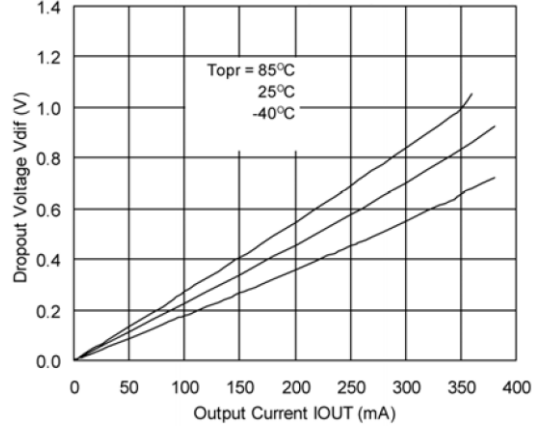
**IXD1209/12 B302**

C<sub>IN</sub> = C<sub>L</sub> = 1μF, (ceramic)



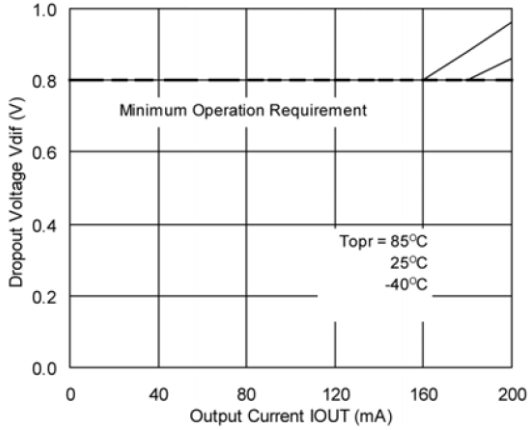
**IXD1209/12 F302**

C<sub>IN</sub> = C<sub>L</sub> = 1μF, (ceramic)



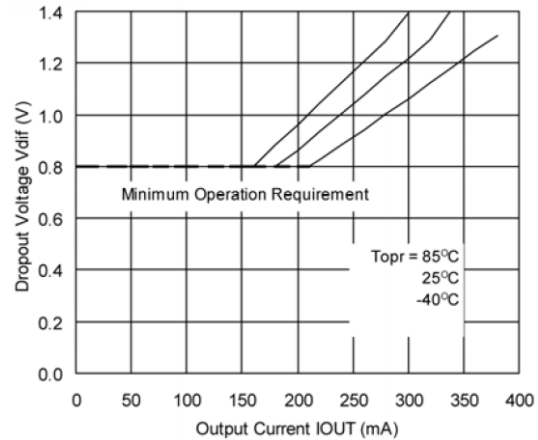
**IXD1209/12 B122**

C<sub>IN</sub> = C<sub>L</sub> = 1μF, (ceramic)



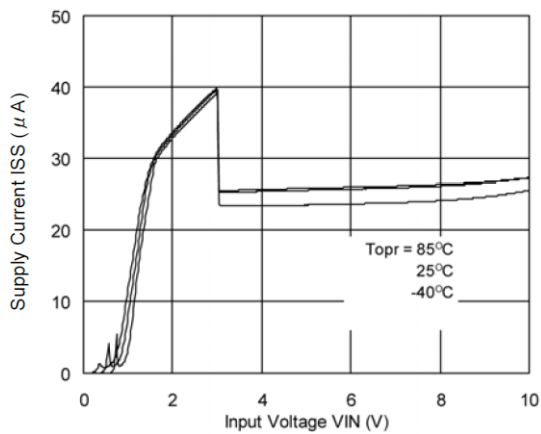
**IXD1209/12 F122**

C<sub>IN</sub> = C<sub>L</sub> = 1μF, (ceramic)

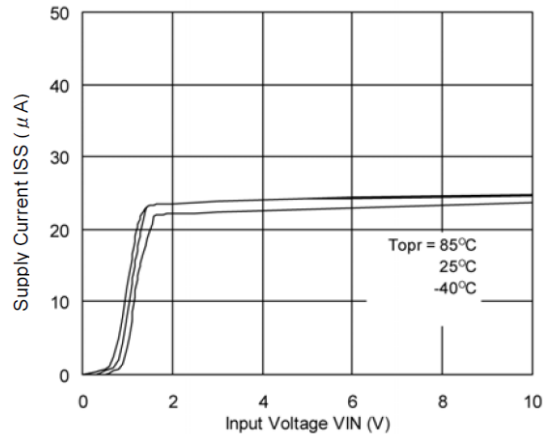


(5) Supply Current vs. Input Voltage

**IXD1209/12 F302**



**IXD1209/12 F122**

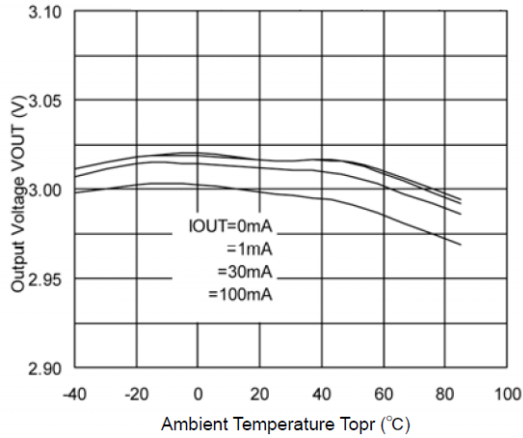


**TYPICAL PERFORMANCE CHARACTERISTICS (Continued)**

(6) Output Voltage vs. Ambient temperature

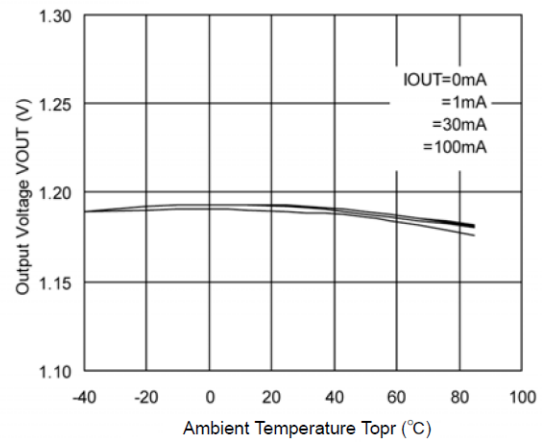
**IXD1209/12 B/F302**

$C_{IN} = C_L = 1\mu F$ , (ceramic),  $V_{IN} = 4.0 V$



**IXD1209/12 B122**

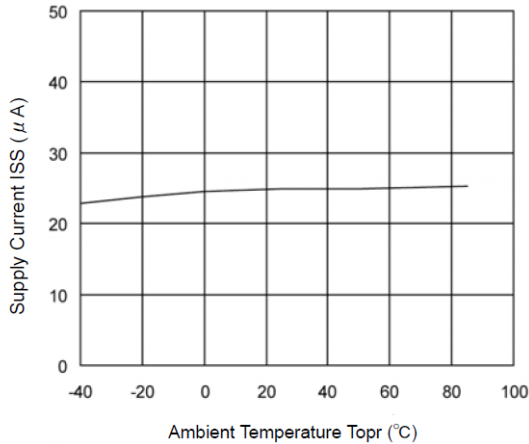
$C_{IN} = C_L = 1\mu F$ , (ceramic),  $V_{IN} = 2.5 V$



(7) Supply Current vs. Ambient temperature

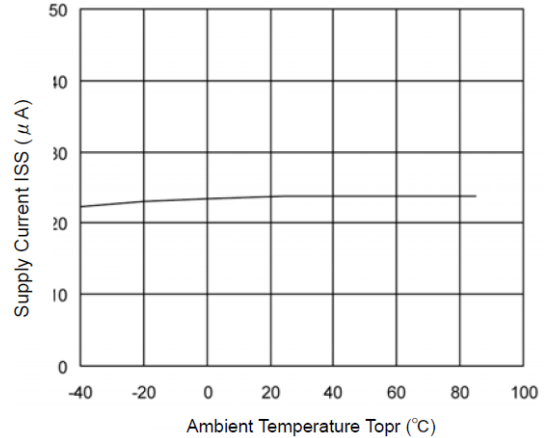
**IXD1209/12 B/F302**

$V_{IN} = 4.0 V$



**IXD1209/12 B122**

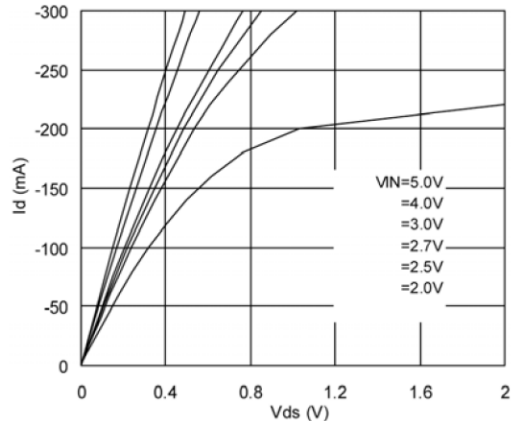
$V_{IN} = 2.5 V$



(8) P-channel Transistor Characteristics

**IXD1209/12 B/F**

$T_a = 25^\circ C$

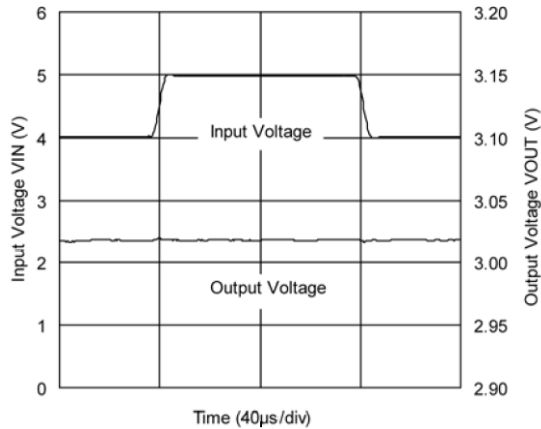


**TYPICAL PERFORMANCE CHARACTERISTICS (Continued)**

**(9) Input Voltage Transient Response**

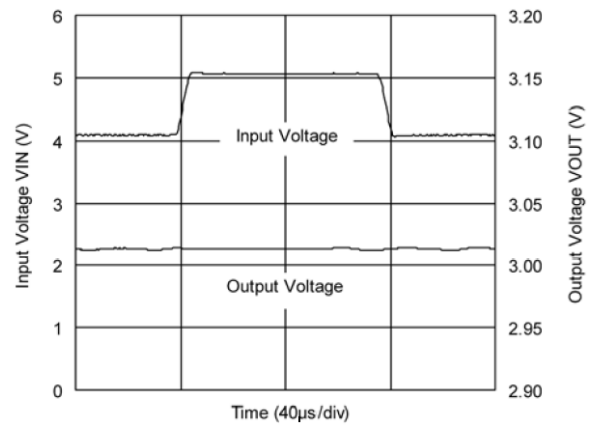
**IXD1209/12 B/F302**

$C_{IN} = C_L = 1\mu\text{F}$ , (ceramic),  $I_{OUT} = 1\text{ mA}$ ,  $t_R = 5\text{ us}$



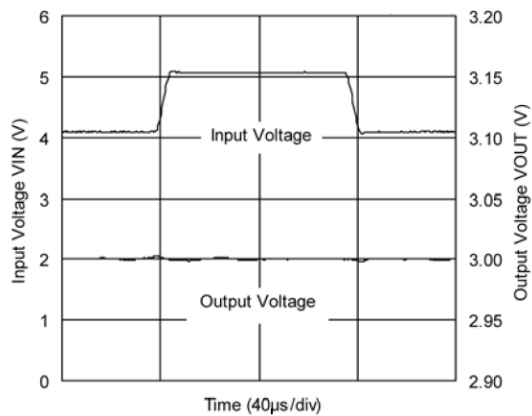
**IXD1209/12 B/F302**

$C_{IN} = C_L = 1\mu\text{F}$ , (ceramic),  $I_{OUT} = 30\text{ mA}$ ,  $t_R = 5\text{ us}$



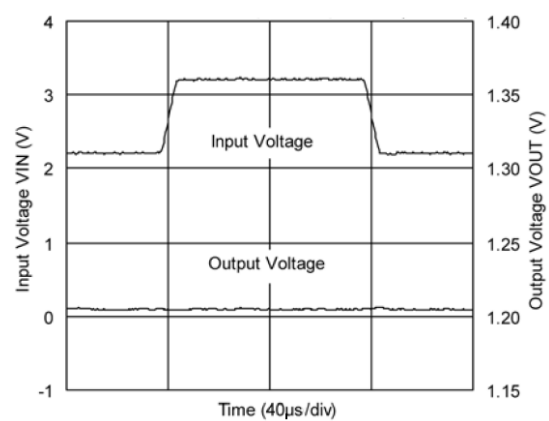
**IXD1209/12 B/F302**

$C_{IN} = C_L = 1\mu\text{F}$ , (ceramic),  $I_{OUT} = 100\text{ mA}$ ,  $t_R = 5\text{ us}$



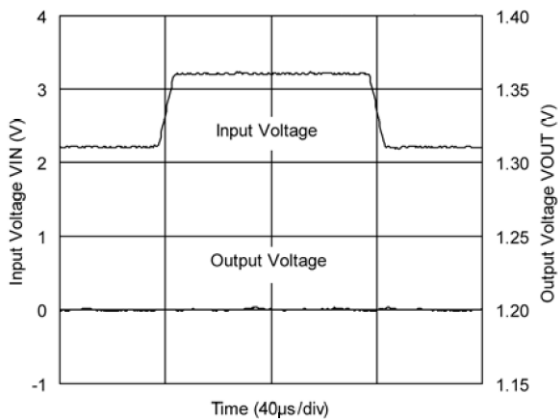
**IXD1209/12 B122**

$C_{IN} = C_L = 1\mu\text{F}$ , (ceramic),  $I_{OUT} = 1\text{ mA}$ ,  $t_R = 5\text{ us}$



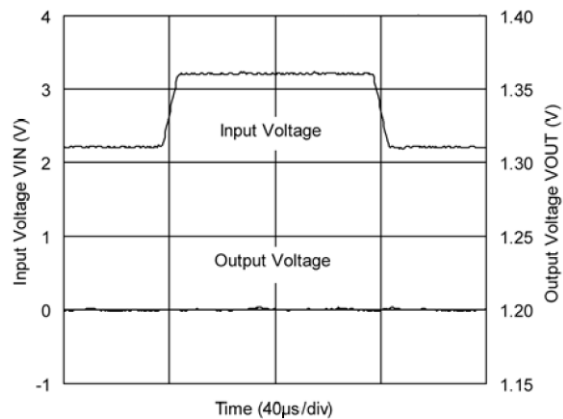
**IXD1209/12 B122**

$C_{IN} = C_L = 1\mu\text{F}$ , (ceramic),  $I_{OUT} = 30\text{ mA}$ ,  $t_R = 5\text{ us}$



**IXD1209/12 B122**

$C_{IN} = C_L = 1\mu\text{F}$ , (ceramic),  $I_{OUT} = 100\text{ mA}$ ,  $t_R = 5\text{ us}$



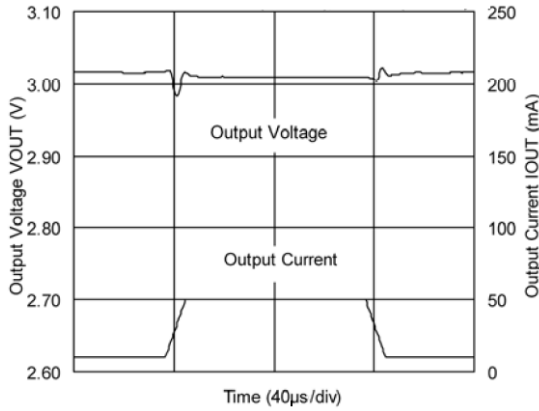


**TYPICAL PERFORMANCE CHARACTERISTICS (Continued)**

(10) Load Transient Response

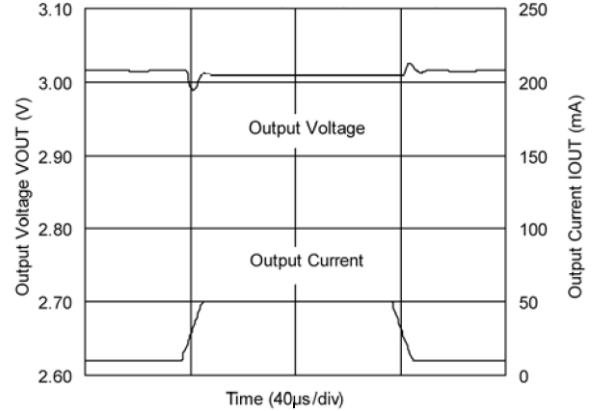
**IXD1209/12 B/F302**

$C_{IN} = C_L = 1\mu\text{F}$ , (ceramic),  $V_{IN} = 4.0\text{ V}$ ,  $t_r = t_f = 5\text{ us}$



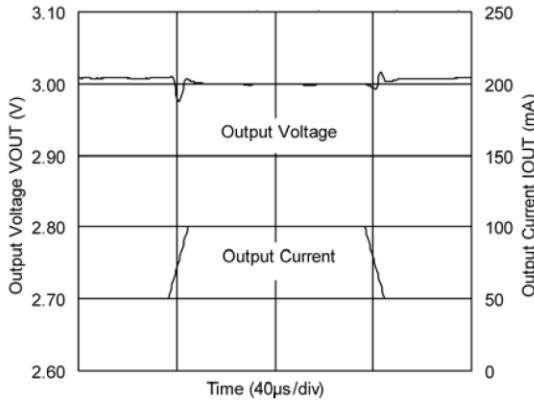
**IXD1209/12 B/F302**

$C_{IN} = 1\mu\text{F}$ , (ceramic),  $C_L = 2.2\mu\text{F}$ , (ceramic),  $V_{IN} = 4.0\text{ V}$ ,  $t_r = t_f = 5\text{ us}$



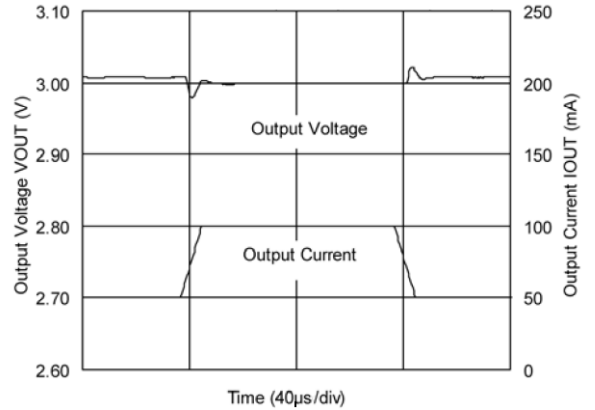
**IXD1209/12 B/F302**

$C_{IN} = C_L = 1\mu\text{F}$ , (ceramic),  $V_{IN} = 4.0\text{ V}$ ,  $t_r = t_f = 5\text{ us}$



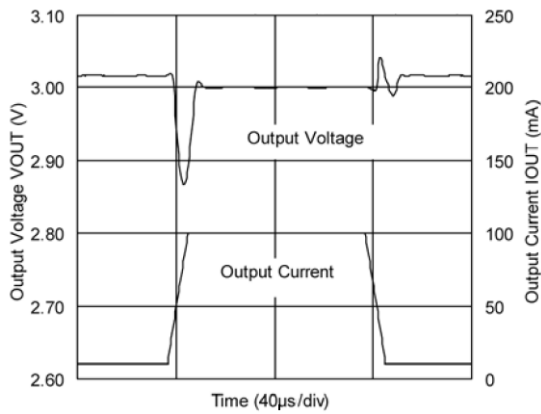
**IXD1209/12 B/F302**

$C_{IN} = 1\mu\text{F}$ , (ceramic),  $C_L = 2.2\mu\text{F}$ , (ceramic),  $V_{IN} = 4.0\text{ V}$ ,  $t_r = t_f = 5\text{ us}$



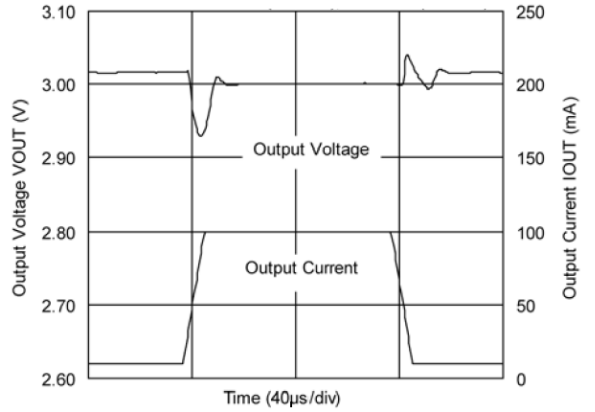
**IXD1209/12 B/F302**

$C_{IN} = C_L = 1\mu\text{F}$ , (ceramic),  $V_{IN} = 4.0\text{ V}$ ,  $t_r = t_f = 5\text{ us}$



**IXD1209/12 B/F302**

$C_{IN} = 1\mu\text{F}$ , (ceramic),  $C_L = 2.2\mu\text{F}$ , (ceramic),  $V_{IN} = 4.0\text{ V}$ ,  $t_r = t_f = 5\text{ us}$

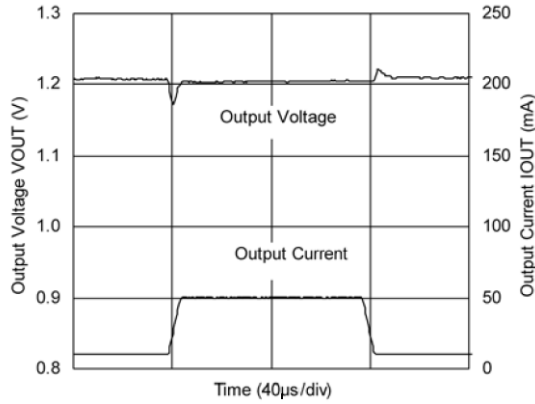


## TYPICAL PERFORMANCE CHARACTERISTICS (Continued)

### (10) Load Transient Response (Continued)

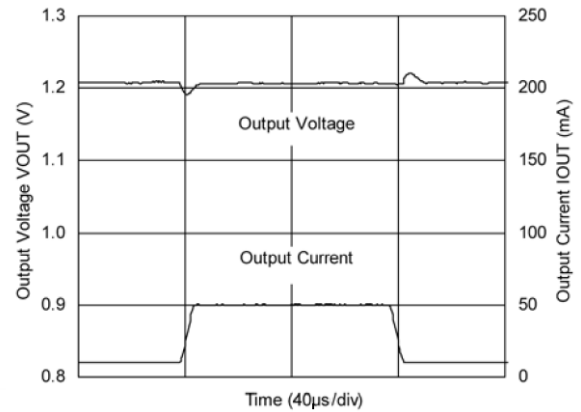
#### IXD1209/12 B/F122

$C_{IN} = C_L = 1\mu\text{F}$ , (ceramic),  $V_{IN} = 2.5\text{ V}$ ,  $t_r = t_f = 5\text{ us}$



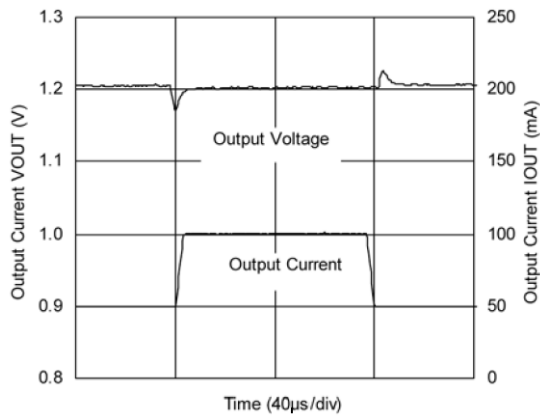
#### IXD1209/12 B/F122

$C_{IN} = 1\mu\text{F}$ , (ceramic),  $C_L = 2.2\mu\text{F}$ , (ceramic),  $V_{IN} = 2.5\text{ V}$ ,  $t_r = t_f = 5\text{ us}$



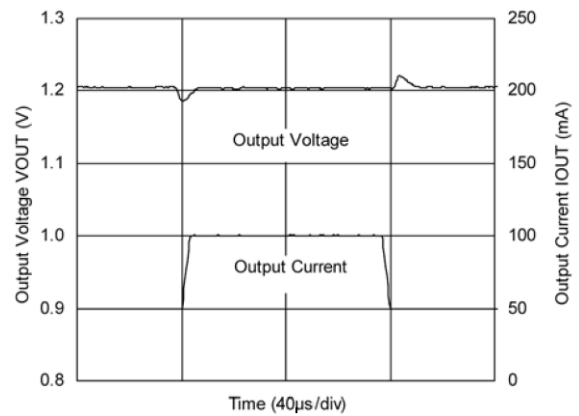
#### IXD1209/12 B/F122

$C_{IN} = C_L = 1\mu\text{F}$ , (ceramic),  $V_{IN} = 2.5\text{ V}$ ,  $t_r = t_f = 5\text{ us}$



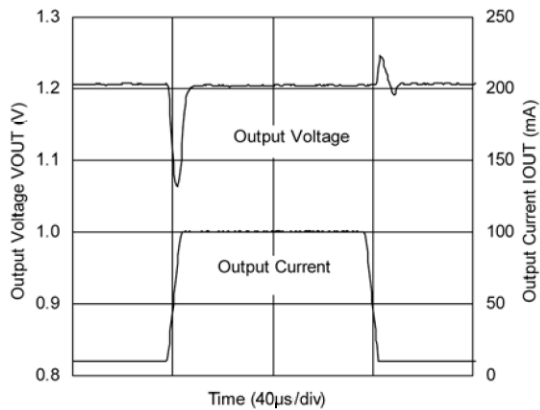
#### IXD1209/12 B/F122

$C_{IN} = 1\mu\text{F}$ , (ceramic),  $C_L = 2.2\mu\text{F}$ , (ceramic),  $V_{IN} = 2.5\text{ V}$ ,  $t_r = t_f = 5\text{ us}$



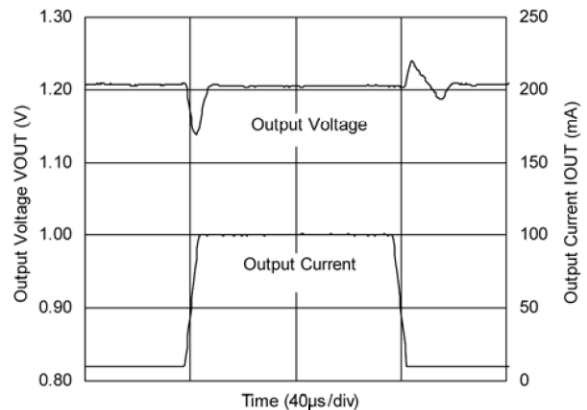
#### IXD1209/12 B/F122

$C_{IN} = C_L = 1\mu\text{F}$ , (ceramic),  $V_{IN} = 2.5\text{ V}$ ,  $t_r = t_f = 5\text{ us}$



#### IXD1209/12 B/F122

$C_{IN} = 1\mu\text{F}$ , (ceramic),  $C_L = 2.2\mu\text{F}$ , (ceramic),  $V_{IN} = 2.5\text{ V}$ ,  $t_r = t_f = 5\text{ us}$



## ORDERING INFORMATION

IXD1209①②③④⑤⑥-⑦

IXD1212①②③④⑤⑥-⑦

DESIGNATOR	DESCRIPTION	SYMBOL	DESCRIPTION
①	Type of Regulator CE PIN Logic	A	150 mA, Active High, Pull-down resistor built-in <sup>(*)2</sup> (Semi-custom)
		B	150 mA, Active High, No pull-down resistor (Standard)
		C	150 mA, Active Low, Pull-up resistor built-in <sup>(*)2</sup> (Semi-custom)
		D	150 mA, Active Low, No pull-up resistor (Semi-custom)
		E	300 mA <sup>(*)1</sup> , Active High, Pull-down resistor built-in <sup>(*)2</sup> (Semi-custom)
		F	300 mA <sup>(*)1</sup> , Active High, No pull-down resistor (Standard)
		G	300 mA <sup>(*)1</sup> , Active Low, Pull-up resistor built-in <sup>(*)2</sup> (Semi-custom)
		H	300 mA <sup>(*)1</sup> , Active Low, No pull-up resistor (Semi-custom)
②③	Output Voltage	09 - 60	Output Voltage Range: 0.9 V~6.0 V, e.g. 3.0 V - ② = 3, ③ = 0
		30 - 60	For 1% product, output voltage range is 3.0 V~6.0 V.
④	Output Voltage Accuracy	1	0.1 V increments, Accuracy: ±1%, e.g. 3.00 V - ② = 3, ③ = 0, ④ = 1
		2	0.1 V increments, Accuracy: ±2% <sup>(*)3</sup> , e.g. 2.80V - ② = 2, ③ = 8, ④ = 2
		A	0.05 V increments, Accuracy: ±2% <sup>(*)3</sup> , e.g.: 2.85 V - ② = 2, ③ = 8, ④ = A
		B	0.05 V increments, Accuracy: ±1%, e.g.: 3.05 V - ② = 3, ③ = 0, ④ = B
⑤⑥-⑦ <sup>(*)4</sup>	Packages (Order Limit)	MR	SOT-25 (3000/Reel)
		MR-G	SOT-25 (3000/Reel)
		PR	SOT-89 (3000/Reel)
		PR-G	SOT-89 (3000/Reel)
		DR	USP-6B (3000/Reel)
		DR-G	USP-6B (3000/Reel)

### NOTE:

(\*1) The maximum output current of type E ~ H depends on setting output voltage.

(\*2) With the pull-up resistor or pull-down resistor built-in types, the supply current during operation will increase by  $V_{IN} / 2 M\Omega$  (TYP.).

(\*3) The output voltage accuracy is ±30 mV at  $V_{OUT} \leq 1.5 V$ .

(\*4) The “-G” suffix denotes Halogen and Antimony free as well as being fully RoHS compliant.



**PACKAGE POWER DISSIPATION**

**SOT-25 Power Dissipation**

The power dissipation varies with the mount board conditions. Please use this data as a reference only.

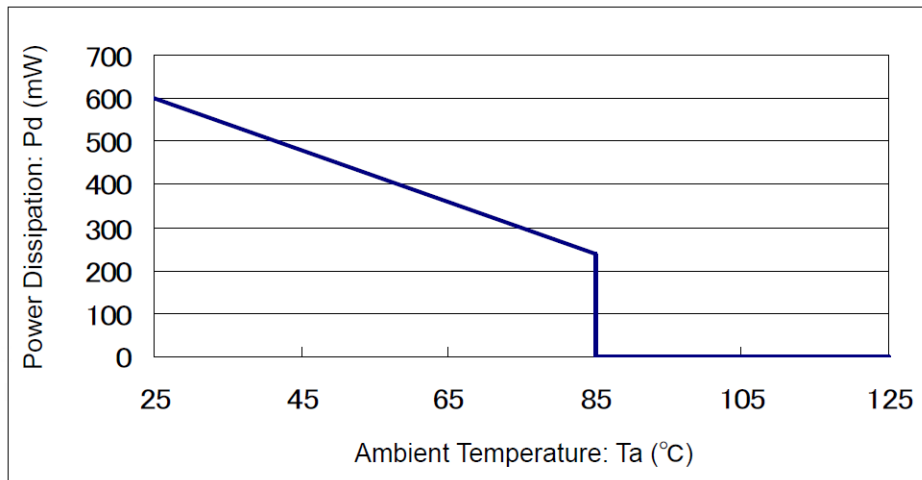
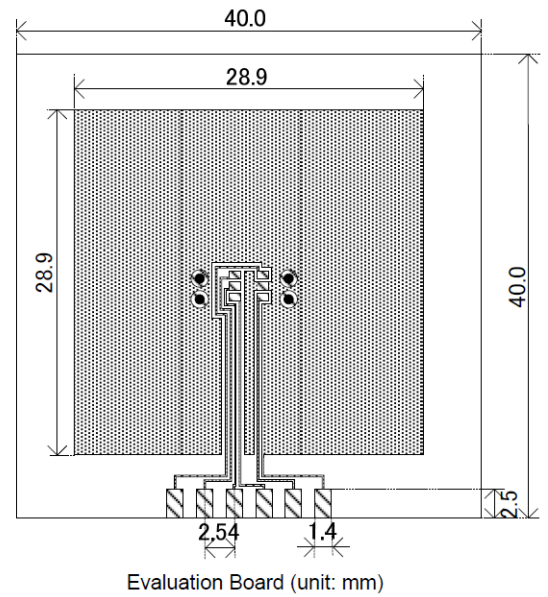
1. Measurement Conditions:

- Condition: Mount on a board
- Ambient: Natural convection
- Soldering: Lead (Pb) free
- Board: Dimensions 40x40 mm (1600 mm<sup>2</sup> in one side)  
Copper (Cu) traces occupy 50% of the board area on top and bottom layers  
Package heat sink tied to the copper traces.  
(Board of SOT-26 is used)
- Material: Glass Epoxy (FR-4)
- Thickness: 1.6 mm
- Through-hole: 4 x 0.8 Diameter

2. Power Dissipation vs. Ambient Temperature

Board Mount (T<sub>jmax</sub> = 125 °C)

Ambient Temperature, °C	Power Dissipation Pd, mW	Thermal Resistance, °C/W
25	600	166.67
85	240	



**PACKAGE POWER DISSIPATION (CONTINUED)**

**SOT-89-5 Power Dissipation**

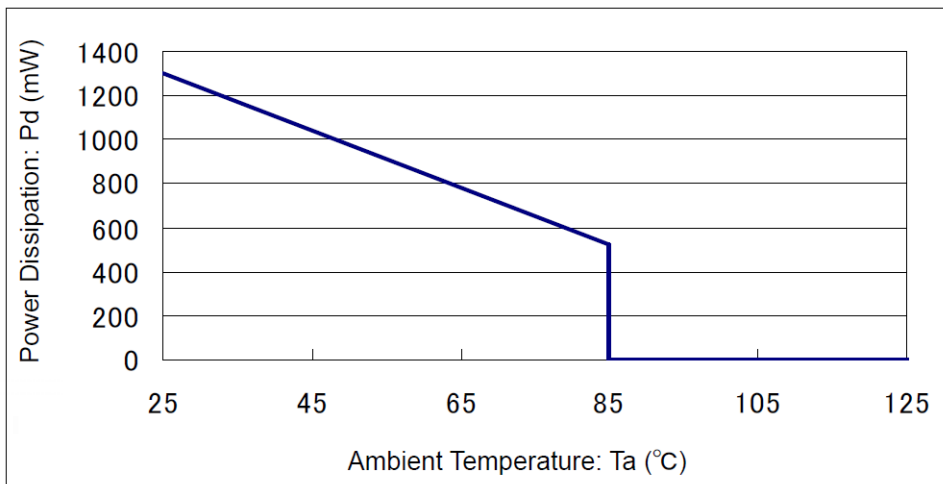
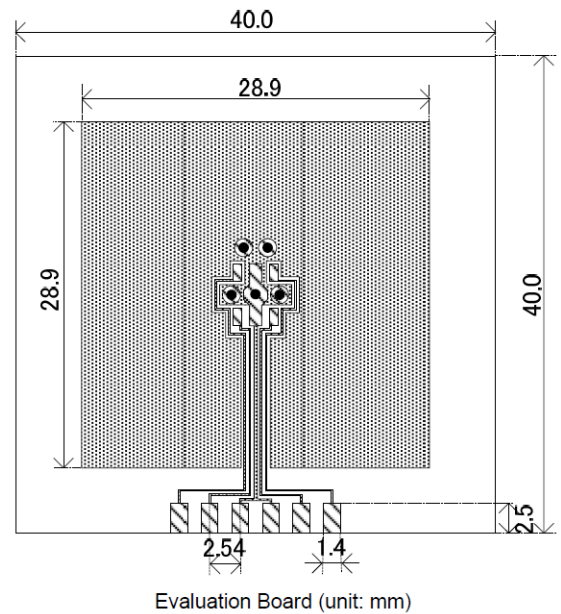
The power dissipation varies with the mount board conditions. Please use this data as a reference only.

1. Measurement Conditions:

- Condition: Mount on a board
- Ambient: Natural convection
- Soldering: Lead (Pb) free
- Board: Dimensions 40x40 mm (1600 mm<sup>2</sup> in one side)  
Copper (Cu) traces occupy 50% of the board area on top and bottom layers  
Package heat sink tied to the copper traces.  
(Board of SOT-26 is used)
- Material: Glass Epoxy (FR-4)
- Thickness: 1.6 mm
- Through-hole: 5 x 0.8 Diameter

2. Power Dissipation vs. Ambient Temperature  
Board Mount (T<sub>jmax</sub> = 125 °C)

Ambient Temperature, °C	Power Dissipation Pd, mW	Thermal Resistance, °C/W
25	1300	76.92
85	520	



**PACKAGE POWER DISSIPATION (CONTINUED)**

**USP-6B Power Dissipation**

The power dissipation varies with the mount board conditions. Please use this data as a reference only.

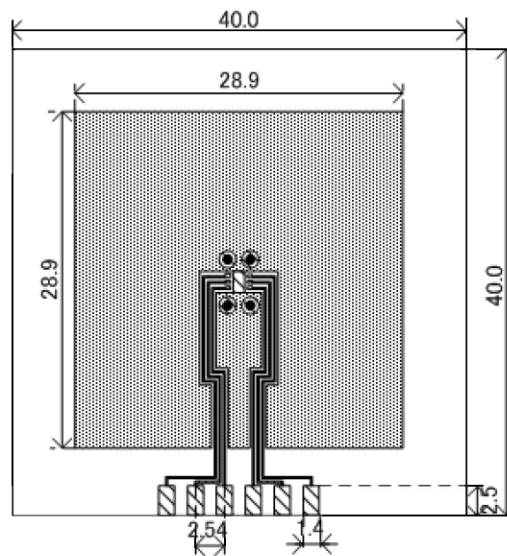
1. Measurement Conditions:

- Condition: Mount on a board
- Ambient: Natural convection
- Soldering: Lead (Pb) free
- Board: Dimensions 40x40 mm (1600 mm<sup>2</sup> in one side)  
Copper (Cu) traces occupy 50% of the board area on top and bottom layers  
Package heat sink tied to the copper traces.  
(Board of SOT-26 is used)
- Material: Glass Epoxy (FR-4)
- Thickness: 1.6 mm
- Through-hole: 4 x 0.8 Diameter

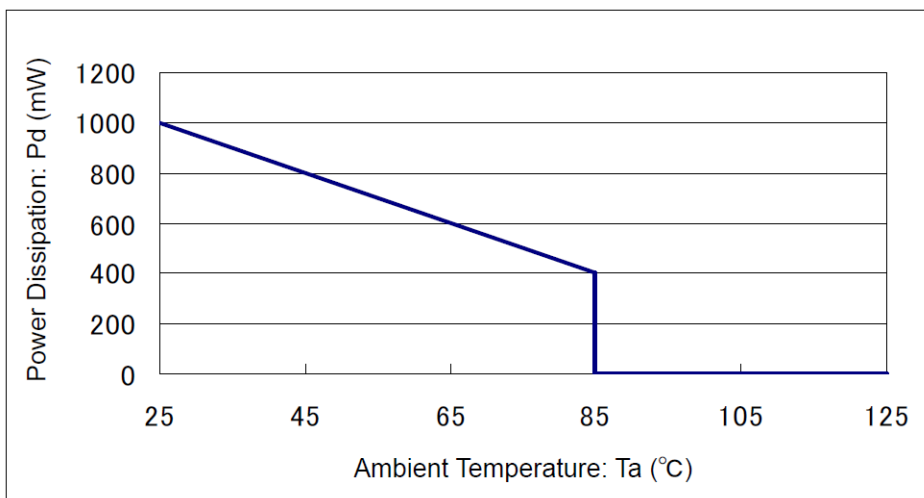
2. Power Dissipation vs. Ambient Temperature

Board Mount (T<sub>jmax</sub> = 125 °C)

Ambient Temperature, °C	Power Dissipation Pd, mW	Thermal Resistance, °C/W
25	1000	100.00
85	400	



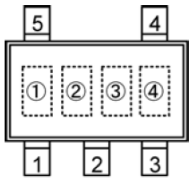
Evaluation Board (unit: mm)



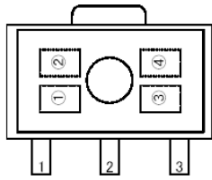
## MARKING

IXD1209

SOT-25, SOT 89



SOT-25 (TOP VIEW)



SOT-89 (TOP VIEW)

① - represents product series

MARK	PRODUCT SERIES
9	IXD1209xxxxx

② - represents type of regulator

MARK				PRODUCT SERIES
VOUT 0.1 V INCREMENTS		VOUT 0.05 V INCREMENTS		
Voltage 0.1 – 3.0 V	Voltage 3.1 – 6.0 V	Voltage 0.15 – 3.05 V	Voltage 3.15 – 6.05 V	
V	A	E	L	IXD1209Axxxxx
X	B	F	M	IXD1209Bxxxxx
Y	C	H	N	IXD1209Cxxxxx
Z	D	K	P	IXD1209Dxxxxx
<u>V</u>	<u>A</u>	<u>E</u>	<u>L</u>	IXD1209Exxxxx
<u>X</u>	<u>B</u>	<u>F</u>	<u>M</u>	IXD1209Fxxxxx
<u>Y</u>	<u>C</u>	<u>H</u>	<u>N</u>	IXD1209Gxxxxx
<u>Z</u>	<u>D</u>	<u>K</u>	<u>P</u>	IXD1209Hxxxxx

③ - represents output voltage

MARK	OUTPUT VOLTAGE, V			
0		3.1		3.15
1		3.2		3.25
2		3.3		3.35
3		3.4		3.45
4		3.5		3.55
5		3.6		3.65
6		3.7		3.75
7		3.8		3.85
8	0.9	3.9	0.95	3.95
9	1.0	4.0	1.05	4.05
A	1.1	4.1	1.15	4.15
B	1.2	4.2	1.25	4.25
C	1.3	4.3	1.35	4.35
D	1.4	4.4	1.45	4.45
E	1.5	4.5	1.55	4.55

MARK	OUTPUT VOLTAGE, V			
F	1.6	4.6	1.65	4.65
H	1.7	4.7	1.75	4.75
K	1.8	4.8	1.85	4.85
L	1.9	4.9	1.95	4.95
M	2.0	5.0	2.05	5.05
N	2.1	5.1	2.15	5.15
P	2.2	5.2	2.25	5.25
R	2.3	5.3	2.35	5.35
S	2.4	5.4	2.45	5.45
T	2.5	5.5	2.55	5.55
U	2.6	5.6	2.65	5.65
V	2.7	5.7	2.75	5.75
X	2.8	5.8	2.85	5.85
Y	2.9	5.9	2.95	5.95
Z	3.0	6.0	3.05	6.05

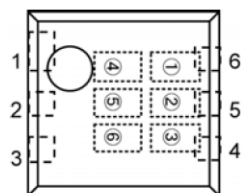
④ - represents production lot number 0 to 9, A to Z repeated (G, I, J, O, Q, W excluded)



## MARKING (Continue)

IXD1209

USP-6B



USP-6B  
(TOP VIEW)

①② - represents product series

MARK		PRODUCT SERIES
①	②	
0	9	IXD1209xxxxDx

③ - represents type of regulator

MARK	TYPE	PRODUCT SERIES
A	CE pin, Active High pull-down resistor built in	IXD1209AxxxDx
B	CE pin, Active High no pull-down resistor built in	IXD1209BxxxDx
C	CE pin, Active Low pull-up resistor built in	IXD1209CxxxDx
D	CE pin, Active Low no pull-up resistor built in	IXD1209DxxxDx

④ - represents integer of the output voltage

MARK	VOLTAGE, V	PRODUCT SERIES
3	3.x	IXD1209x3xxDx
5	5.x	IXD1209x5xxDx

⑤ - represents decimal number of the output voltage

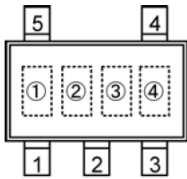
MARK	VOLTAGE, V	PRODUCT SERIES	MARK	VOLTAGE, V	PRODUCT SERIES
0	x.0	IXD1209xx0xDx	A	x.05	IXD1209xx0ADx
1	x.1	IXD1209xx1xDx	B	x.15	IXD1209xx1ADx
2	x.2	IXD1209xx2xDx	C	x.25	IXD1209xx2ADx
3	x.3	IXD1209xx3xDx	D	x.35	IXD1209xx3ADx
4	x.4	IXD1209xx4xDx	E	x.45	IXD1209xx4ADx
5	x.5	IXD1209xx5xDx	F	x.55	IXD1209xx5ADx
6	x.6	IXD1209xx6xDx	H	x.65	IXD1209xx6ADx
7	x.7	IXD1209xx7xDx	K	x/75	IXD1209xx7ADx
8	x.8	IXD1209xx8xDx	L	x.85	IXD1209xx8ADx
9	x.9	IXD1209xx9xDx	M	x.95	IXD1209xx9ADx

⑥ - represents production lot number 0 to 9, A to Z repeated (G, I, J, O, Q, W excluded)

## MARKING

IXD1212

SOT-25



SOT-25 (TOP VIEW)

① - represents product series

MARK	PRODUCT SERIES
9	IXD1212xxxMx

② - represents type of regulator

MARK				PRODUCT SERIES
VOUT 0.1 V INCREMENTS		VOUT 0.05 V INCREMENTS		
Voltage 0.1 – 3.0 V	Voltage 3.1 – 6.0 V	Voltage 0.15 – 3.05 V	Voltage 3.15 – 6.05 V	
V	A	E	L	IXD1212AxxxMx
X	B	F	M	IXD1212BxxxMx
Y	C	H	N	IXD1212CxxxMx
Z	D	K	P	IXD1212DxxxMx

③ - represents output voltage

MARK	OUTPUT VOLTAGE, V			
0		3.1		3.15
1		3.2		3.25
2		3.3		3.35
3		3.4		3.45
4		3.5		3.55
5		3.6		3.65
6		3.7		3.75
7		3.8		3.85
8	0.9	3.9	0.95	3.95
9	1.0	4.0	1.05	4.05
A	1.1	4.1	1.15	4.15
B	1.2	4.2	1.25	4.25
C	1.3	4.3	1.35	4.35
D	1.4	4.4	1.45	4.45
E	1.5	4.5	1.55	4.55

MARK	OUTPUT VOLTAGE, V			
F	1.6	4.6	1.65	4.65
H	1.7	4.7	1.75	4.75
K	1.8	4.8	1.85	4.85
L	1.9	4.9	1.95	4.95
M	2.0	5.0	2.05	5.05
N	2.1	5.1	2.15	5.15
P	2.2	5.2	2.25	5.25
R	2.3	5.3	2.35	5.35
S	2.4	5.4	2.45	5.45
T	2.5	5.5	2.55	5.55
U	2.6	5.6	2.65	5.65
V	2.7	5.7	2.75	5.75
X	2.8	5.8	2.85	5.85
Y	2.9	5.9	2.95	5.95
Z	3.0	6.0	3.05	6.05

④ - represents production lot number 0 to 9, A to Z repeated (G, I, J, O, Q, W excluded)

## Customer Support

To share comments, get your technical questions answered, or report issues you may be experiencing with our products, please visit Zilog's Technical Support page at <http://support.zilog.com>. To learn more about this product, find additional documentation, or to discover other facets about Zilog product offerings, please visit the Zilog Knowledge Base at <http://zilog.com/kb> or consider participating in the Zilog Forum at <http://zilog.com/forum>. This publication is subject to replacement by a later edition. To determine whether a later edition exists, please visit the Zilog website at <http://www.zilog.com>.

---

**Warning:** DO NOT USE THIS PRODUCT IN LIFE SUPPORT SYSTEMS.

---

**LIFE SUPPORT POLICY** ZILOG'S PRODUCTS ARE NOT AUTHORIZED FOR USE AS CRITICAL COMPONENTS IN LIFE SUPPORT DEVICES OR SYSTEMS WITHOUT THE EXPRESS PRIOR WRITTEN APPROVAL OF THE PRESIDENT AND GENERAL COUNSEL OF ZILOG CORPORATION.

**As used herein** Life support devices or systems are devices which (a) are intended for surgical implant into the body, or (b) support or sustain life and whose failure to perform when properly used in accordance with instructions for use provided in the labeling can be reasonably expected to result in a significant injury to the user. A critical component is any component in a life support device or system whose failure to perform can be reasonably expected to cause the failure of the life support device or system or to affect its safety or effectiveness.

**Document Disclaimer** ©2015 Zilog, Inc. All rights reserved. Information in this publication concerning the devices, applications, or technology described is intended to suggest possible uses and may be superseded. ZILOG, INC. DOES NOT ASSUME LIABILITY FOR OR PROVIDE A REPRESENTATION OF ACCURACY OF THE INFORMATION, DEVICES, OR TECHNOLOGY DESCRIBED IN THIS DOCUMENT. ZILOG ALSO DOES NOT ASSUME LIABILITY FOR INTELLECTUAL PROPERTY INFRINGEMENT RELATED IN ANY MANNER TO USE OF INFORMATION, DEVICES, OR TECHNOLOGY DESCRIBED HEREIN OR OTHERWISE. The information contained within this document has been verified according to the general principles of electrical and mechanical engineering.