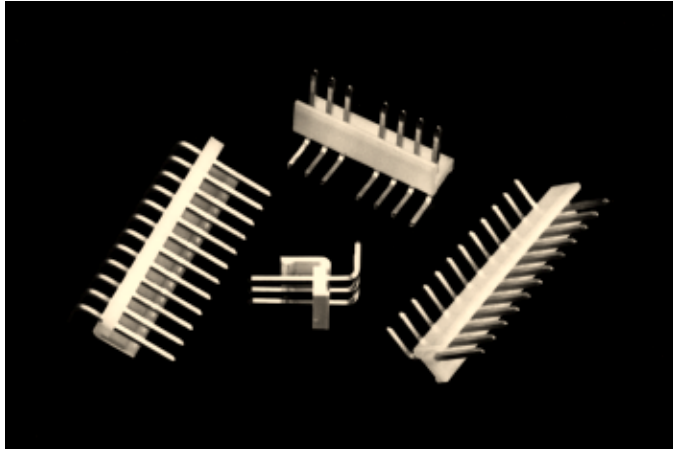


.156" (3.96mm) Single Row, Through Hole, Right Angle, Bottom Polarizing, Locking Headers



3100 SERIES ("TERMACON")

PART NUMBER LEGEND

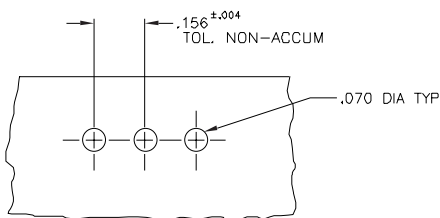
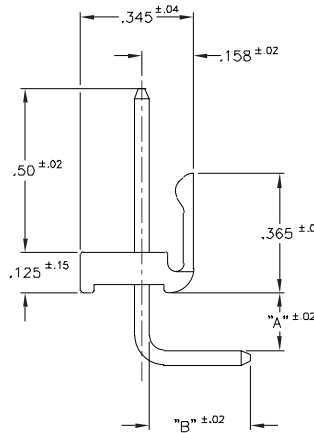
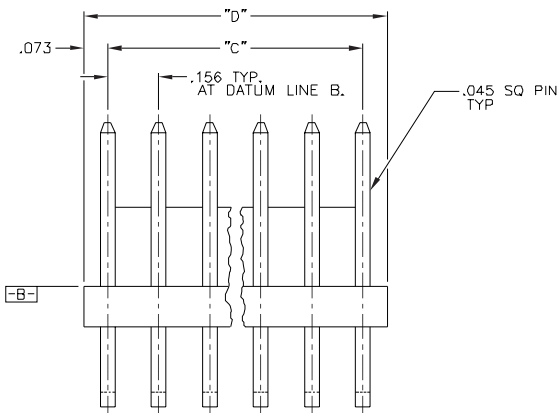
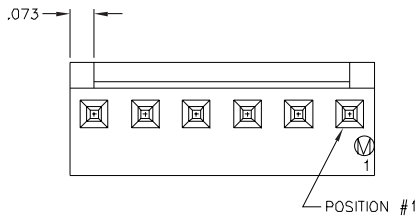
310X-12-1XX-XX

- PIN NUMBER A & B: (SEE TABLE II)
- NUMBER OF POSITIONS (SEE TABLE I)
- INSULATOR TYPE
- PIN PLATING (SEE NOTE 2)
- INSULATOR MATERIAL (SEE NOTE 1)

MATING CONNECTORS: 3000 SERIES AND 3300 SERIES CRIMP OR IDC STYLE CONNECTORS

NOTES:

- 1) INSULATOR MATERIAL: 310X-9-1XX-XX: NYLON 6/6 94V-2
316X-9-1XX-XX: NYLON 6/6 94V-0
CONTACT-70/30 BRASS
- 2) CONTACT FINISH: 31X0-TIN OVER NICKEL PLATE
31X2-.000015 GOLD PL OVER NICKEL
31XZ-.000030 GOLD PL OVER NICKEL



RECOMMENDED P.C. BOARD LAYOUT

PART No.	No. OF POS	DIM "C"	DIM "D"
31XX-12-102-XX	2	.156	.306
↑ -103- ↓	3	.312	.462
↑ -104- ↓	4	.468	.618
↑ -105- ↓	5	.624	.774
↑ -106- ↓	6	.780	.930
↑ -107- ↓	7	.936	1.086
↑ -108- ↓	8	1.092	1.242
↑ -109- ↓	9	1.248	1.398
↑ -110- ↓	10	1.404	1.554
↑ -111- ↓	11	1.560	1.710
↑ -112- ↓	12	1.716	1.866
↑ -113- ↓	13	1.872	2.022
↑ -114- ↓	14	2.028	2.178
↑ -115- ↓	15	2.184	2.334
↑ -116- ↓	16	2.340	2.490
↑ -117- ↓	17	2.496	2.646
↑ -118- ↓	18	2.652	2.802
↑ -119- ↓	19	2.808	2.958
↑ -120- ↓	20	2.964	3.114
↑ -121- ↓	21	3.120	3.270
↑ -122- ↓	22	3.276	3.426
↑ -123- ↓	23	3.432	3.582
31XX-12-124-XX	24	3.588	3.734

PIN.No	DIM "A"	DIM "B"
45	.170	.310
46	.170	.265