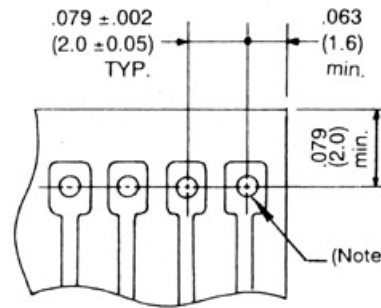
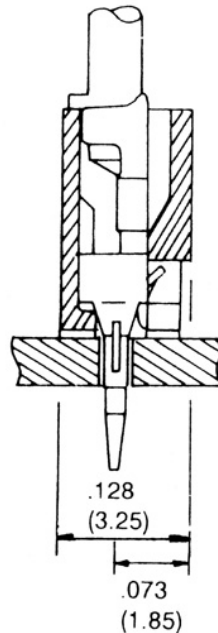
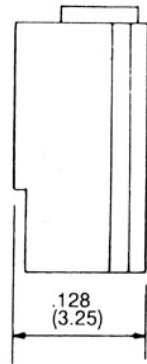
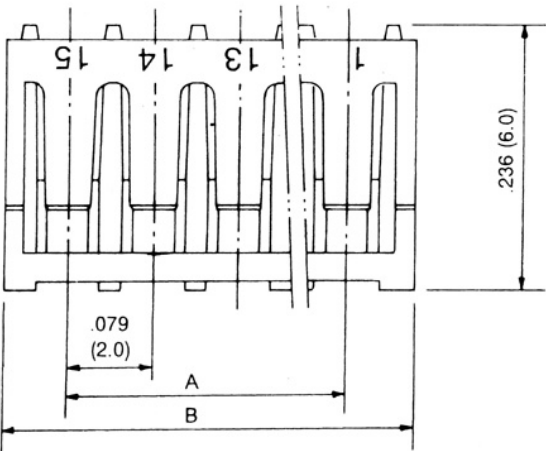
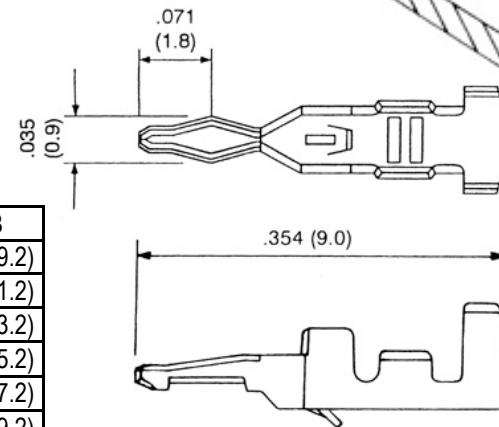
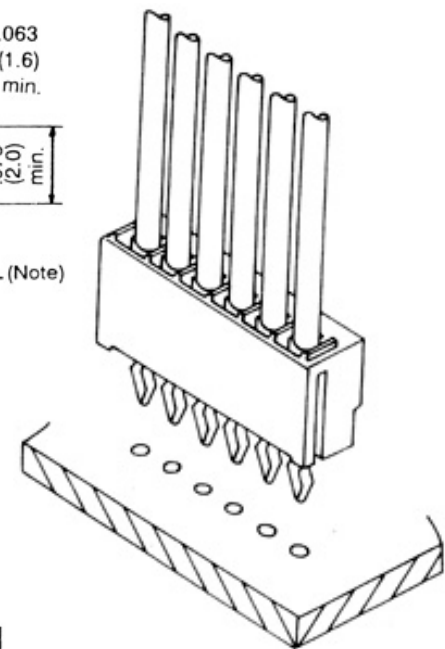


JS-A-9020-XX Housing



Note:

2~7P: $\varnothing .030 \pm .002$ dia.
 $(\varnothing .075 \pm .05$ dia.)
 8~15: $\varnothing .031 \pm .002$ dia.
 $(\varnothing .08 \pm .05$ dia.)



JS-A-920T Terminal

SPECIFICATIONS

Voltage rating: 250VAC/VDC
 Current rating: 2 amps DC
 Housing material: Nylon, UL94V-0
 Housing color: White
 Insulation resist. 1,000 megohms min.
 Withstanding: 800 VAC 1 min.
 Applicable wires: AWG #24~#30
 PC board thickness: .063" (1.6mm)
 Temperature range: -25°C to +85°C
 (including temp. rise)
 Terminal material: Brass
 Terminal plating: Tin

**inches
(mm)**

Pos.	Dim. A	Dim. B	Poles	Dim. A	Dim. B
2	.079 (02.0)	.205 (05.2)	9	.630 (16.0)	.756 (19.2)
3	.157 (04.0)	.283 (07.2)	10	.709 (18.0)	.835 (21.2)
4	.236 (06.0)	.362 (09.2)	11	.787 (20.0)	.913 (23.2)
5	.315 (08.0)	.441 (11.2)	12	.866 (22.0)	.992 (25.2)
6	.394 (10.0)	.520 (13.2)	13	.945 (24.0)	1.071 (27.2)
7	.472 (12.0)	.598 (15.2)	14	1.024 (26.0)	1.150 (29.2)
8	.551 (14.0)	.677 (17.2)	15	1.102 (28.0)	1.228 (31.2)

RoHS compliant

Rev.	Description	Date	Approved	Drawing	Name	Date
				Approved	Howard	05/21/07
				Checked	Lizzy	05/21/07
				Drawn	Tina	05/21/07
				0.0 ± 0.35	0.00 ± 0.20	Angles ± 3'
					UNIT: mm	

Central Components Manufacturing
 440 Lincoln Blvd., Middlesex, New Jersey 08846
 Phone 732 469-5720 888 288-5152 Fax 732 469-1919

Part No.: **JS-A-9020-XX**

Description: Crimp terminal housing and crimp terminal