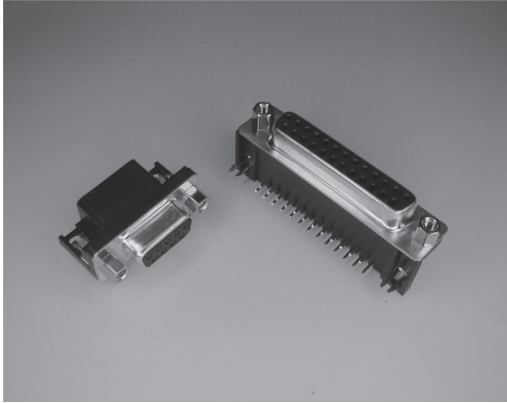


401/D-SUB 5.34 mm Type

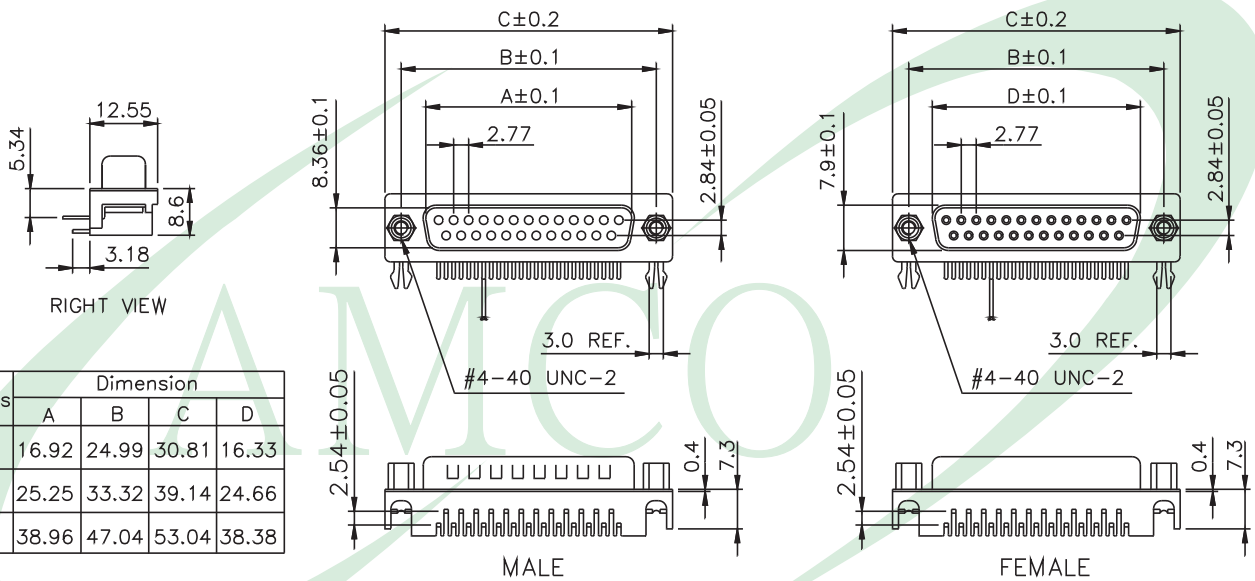


MATERIAL :

1. INSULATOR : PBT + 30% GLASS FIBER UL94V-0.
2. CONTACT : BRASS.
3. CONTACT PLATED : GOLDOVER NICKEL.
4. SHELL : STEEL ZINC PLATED OR TINPLATED.

ELECTRICAL CHARACTERISTICS :

1. CONTACT CURRENT RATING : 5 AMPS.
2. CONTACT RESISTANCE : 30 MILLIOHMS MAX.
3. DIELECTRIC WITHSTANDING VOLTAGE : 500V AC MIN.
4. INSULATION RESISTANCE : 1000 MEGOHMS MIN.
5. TEMPERATURE RATING : -55°C TO +105°C..



Circuits	Dimension			
	A	B	C	D
09	16.92	24.99	30.81	16.33
15	25.25	33.32	39.14	24.66
25	38.96	47.04	53.04	38.38

401. D-SUB

Series No.			
1	2	3	4
4	0	1	—

R/A TYPE
5.34mm FOOT PRINT

3175

No. of Contacts		Contact Type	Mounting Type	Shell Plated	Contact Plated	Plastic Color	Branding	
5	6	7	8	9	10	11	12	13
0	9	M	C	N	S	1	T	A
09		M: MALE	A: Rivet	N: NICKEL	T1: TIN		B: Black	A: Amco Mark
15		F: FEMALE	Type	T: TIN	G1: Gold Flash S1: Gold Flash		G: Gold	N: No Mark
25			B: With Jack Screw	Z: ZINC	G2: 3u" Gold S2: 3u" Gold		D: Burgundy	
			C: Rivet With Jack Screw		G3: 5u" Gold S3: 5u" Gold		T: Turquoise	
			D: Rivet Add Jack Screw		G4: 10u" Gold S4: 10u" Gold			
					G5: 15u" Gold S5: 15u" Gold			
					G6: 30u" Gold S6: 30u" Gold			
					(G: Full Gold)(S: Selective Gold)			