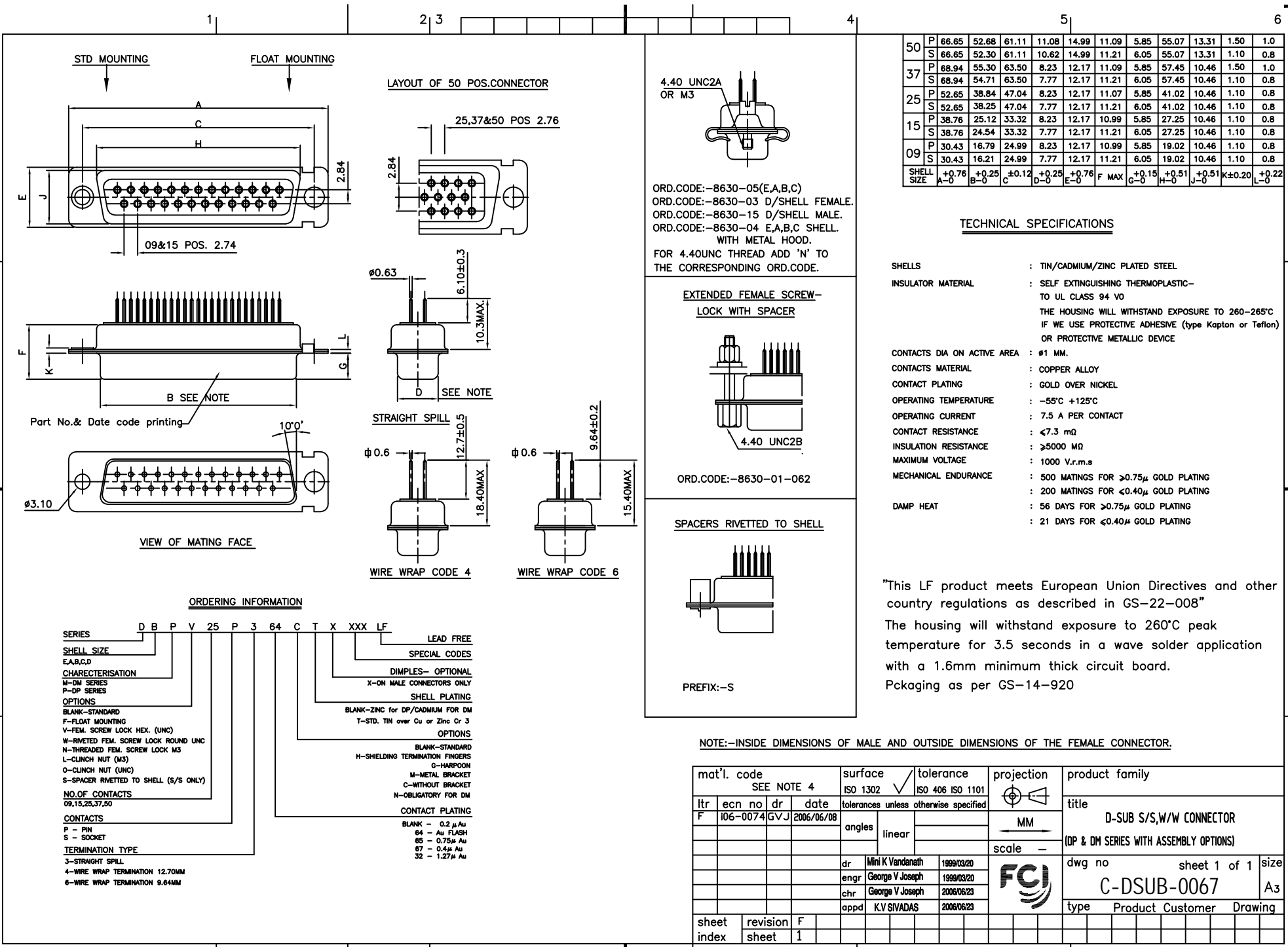




FCIconnect.com

Copyright FCI



50	P	66.65	52.68	61.11	11.08	14.99	11.09	5.85	55.07	13.31	1.50	1.0											
	S	66.85	52.30	61.11	10.62	14.99	11.21	6.05	55.07	13.31	1.10	0.8											
37	P	68.94	55.30	63.50	8.23	12.17	11.09	5.85	57.45	10.46	1.50	1.0											
	S	68.94	54.71	63.50	7.77	12.17	11.21	6.05	57.45	10.46	1.10	0.8											
25	P	52.65	38.84	47.04	8.23	12.17	11.07	5.85	41.02	10.46	1.10	0.8											
	S	52.65	38.25	47.04	7.77	12.17	11.21	6.05	41.02	10.46	1.10	0.8											
15	P	38.76	25.12	33.32	8.23	12.17	10.99	5.85	27.25	10.46	1.10	0.8											
	S	38.76	24.54	33.32	7.77	12.17	11.21	6.05	27.25	10.46	1.10	0.8											
09	P	30.43	16.79	24.99	8.23	12.17	10.99	5.85	19.02	10.46	1.10	0.8											
	S	30.43	16.21	24.99	7.77	12.17	11.21	6.05	19.02	10.46	1.10	0.8											
SHELL SIZE		A-0	+0.76	B-0	+0.25	C	±0.12	D-0	+0.25	E-0	+0.76	F	MAX	G-0	+0.15	H-0	+0.51	J-0	+0.51	K	±0.20	L-0	+0.22

TECHNICAL SPECIFICATIONS

SHELLS : TIN/CADMIUM/ZINC PLATED STEEL

INSULATOR MATERIAL : SELF EXTINGUISHING THERMOPLASTIC- TO UL CLASS 94 V0

THE HOUSING WILL WITHSTAND EXPOSURE TO 260-265°C IF WE USE PROTECTIVE ADHESIVE (type Kapton or Teflon) OR PROTECTIVE METALLIC DEVICE

CONTACTS DIA ON ACTIVE AREA : Ø1 MM.

CONTACTS MATERIAL : COPPER ALLOY

CONTACT PLATING : GOLD OVER NICKEL

OPERATING TEMPERATURE : -55°C +125°C

OPERATING CURRENT : 7.5 A PER CONTACT

CONTACT RESISTANCE : <7.3 mΩ

INSULATION RESISTANCE : >5000 MΩ

MAXIMUM VOLTAGE : 1000 V.r.m.s

MECHANICAL ENDURANCE : 500 MATINGS FOR ≥0.75μ GOLD PLATING
200 MATINGS FOR <0.40μ GOLD PLATING

DAMP HEAT : 56 DAYS FOR ≥0.75μ GOLD PLATING
21 DAYS FOR <0.40μ GOLD PLATING

"This LF product meets European Union Directives and other country regulations as described in GS-22-008"

The housing will withstand exposure to 260°C peak temperature for 3.5 seconds in a wave solder application with a 1.6mm minimum thick circuit board.

Pckaging as per GS-14-920

ORDERING INFORMATION

SERIES D B P V 25 P 3 64 C T X XXX LF LEAD FREE

SHELL SIZE E,A,B,C,D SPECIAL CODES

CHARACTERISATION M-DM SERIES DIMPLES- OPTIONAL
P-DP SERIES X-ON MALE CONNECTORS ONLY

OPTIONS BLANK-STANDARD SHELL PLATING
F-FLOAT MOUNTING BLANK-ZINC for DP/CADMIUM FOR DM
V-FEM. SCREW LOCK HEX. (UNC) T-STD. TIN over Cu or Zinc Cr 3

W-RIVETED FEM. SCREW LOCK ROUND UNC OPTIONS
H-THREADED FEM. SCREW LOCK M3 BLANK-STANDARD
L-CLINCH NUT (H3) H-SHIELDING TERMINATION FINGERS
O-CLINCH NUT (UNC) G-HARPOON
S-SPACER RIVETED TO SHELL (S/S ONLY) M-METAL BRACKET
NO.OF CONTACTS 09,15,25,37,50 N-OBLIGATORY FOR DM
CONTACTS CONTACT PLATING
P - PIN BLANK - 0.2 μ Au
S - SOCKET 64 - Au FLASH
TERMINATION TYPE 65 - 0.75 μ Au
3-STRAIGHT SPILL 67 - 0.4 μ Au
4-WIRE WRAP TERMINATION 12.70MM 32 - 1.27 μ Au
6-WIRE WRAP TERMINATION 9.64MM

NOTE:-INSIDE DIMENSIONS OF MALE AND OUTSIDE DIMENSIONS OF THE FEMALE CONNECTOR.

mat'l. code		surface		tolerance		projection		product family	
SEE NOTE 4		ISO 1302		ISO 406 ISO 1101				D-SUB S/S,W/W CONNECTOR	
ltr	ecn no	dr	date	tolerances unless otherwise specified		MM		title	
F	106-0074	GVJ	2006/06/08	angles	linear	-		(DP & DM SERIES WITH ASSEMBLY OPTIONS)	
sheet index		revision sheet		dr		scale		dwg no	
		1		Mini K Vandanaath		-		sheet 1 of 1	
				engr				size	
				George V Joseph				A3	
				chr				type	
				George V Joseph				Product Customer Drawing	
				appd					
				K.V SIVADAS					