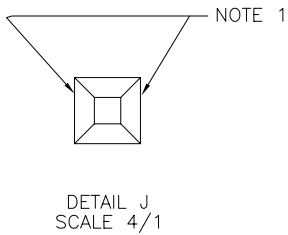
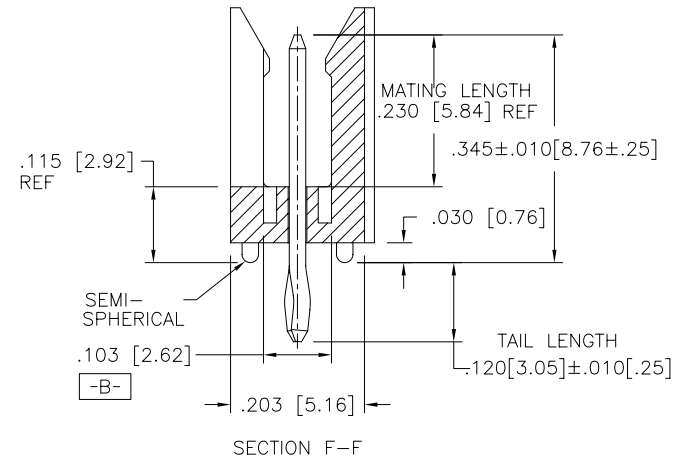
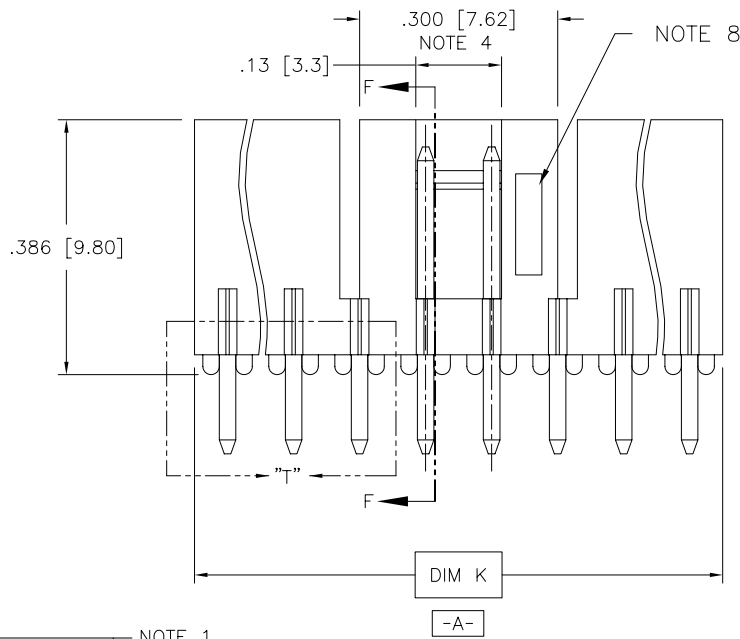
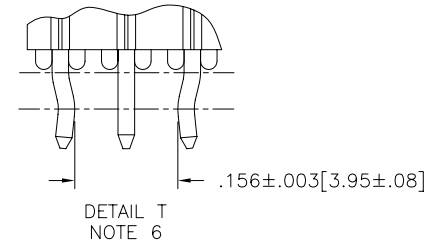
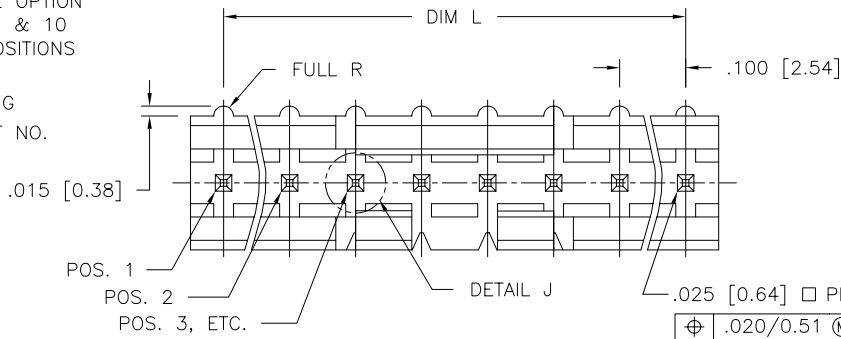


PRODUCT NO.
87319-XYHLF

LEAD FREE OPTION
NOTE 8, 9 & 10
NO. OF POSITIONS
SEE TABLE
PIN PLATING
BASE PART NO.



mat'l. code		surface ISO 1302 ✓		tolerance ISO 406 ISO 1101		projection ⊕-△		product family HEADER	
ltr		ecn no dr		date		tolerances unless otherwise specified		title	
A	V40374	MSC	7/14/94	angles	linear	.xx±.01/0.3	INCH/MM	FRICTION LATCH HEADER	
B	V71186	HTB	9/15/97			.xxx±.005/0.13		SINGLE ROW VERT. SELF RET.	
C	V71470	HTB	10/9/97	0°±2'		.xxx±.0020/0.051	scale 4:1	dwg no	
D	M05-0134	ERE	06/15/05	dr	M.CLOUSER	7/14/94	FCJ	sheet 1 of 2 size	
E	M06-0256	MHT	9/07/06	enr	L.FYE	7/14/94		87319 A3	
				chr	L.FYE	7/14/94		type Product Customer Drawing	
				appd	L.FYE	7/14/94			
sheet index	revision sheet	E	E						
		1	2						

PRODUCT NO	NO OF POS	DIM K	DIM L	RETENTION LEG
87319-X03	1 X 3	.300/7.62	.200/5.08	NOTE 5
-X04	1 X 4	.400/10.16	.300/7.62	NOTE 6
-X05	1 X 5	.500/12.70	.400/10.16	
-X06	1 X 6	.600/15.24	.500/12.70	
-X07	1 X 7	.700/17.78	.600/15.24	
-X08	1 X 8	.800/20.32	.700/17.78	
-X09	1 X 9	.900/22.86	.800/20.32	
-X10	1 X 10	1.000/25.40	.900/22.86	
-X11	1 X 11	1.100/27.94	1.000/25.40	
-X12	1 X 12	1.200/30.48	1.100/27.94	
-X13	1 X 13	1.300/33.02	1.200/30.48	
-X14	1 X 14	1.400/35.56	1.300/33.02	
87319-X15	1 X 15	1.500/38.10	1.400/35.56	NOTE 6

PIN PLATING CODES	
-1YY	30u"/.76u MIN (SEE NOTE 11) 50u"/1.27u Ni
-2YY	15u"/.38u MIN (SEE NOTE 11) 50u"/1.27u Ni
-3YY	50u"/1.27u MIN Au 50u"/1.27u Ni
-4YY	100u"/2.54u MIN Sn 50u"/1.27u Ni (SEE NOTE 12)
-4YYHLF	
-5YY	15u"/.38u MIN (SEE NOTE 11) 50u"/1.27u Ni
-6YY	30u"/.76u MIN (SEE NOTE 11) 50u"/1.27u Ni
-7YY	30u"/.76u MIN Au OVER 50u"/1.27u MIN Ni
-8YY	15u"/.38u MIN Au OVER 50u"/1.27u MIN Ni

NOTES:

- MOLDING MAT'L: GLASS REINFORCED PCT, COLOR: BLACK
FLAME RETARDANT PER UL 94V-0.
MAXIMUM OPERATING TEMPERATURE: 130° C.
- PIN MATERIAL: 3/4 HD PHOS. BRZ.
- NO SLOT ON 5 POSITIONS OR SMALLER PRODUCTS.
THE CENTER KEY SLOT WILL BE ON ALL LATCHING HEADERS REGARDLESS OF SIZE.
- TWO NON-CRITICAL SIDES OF PIN TIP NOT PLATED, BOTH ENDS.
- RETENTION LEGS POS. 1&3. SEE DETAIL T.
- RETENTION LEGS ON 4 POS. NEAR CENTER OF PART AS SHOWN.
- COMPANY LOGO MAY APPEAR IN THIS AREA.
- ADD "HLF" SUFFIX AT THE END OF PART NUMBER FOR LEAD FREE OPTION, NOT AVAILABLE FOR -5YY, -5YYH, -6YY & -6YYH.
- PART NUMBERS WITH "H" SUFFIX WILL WITHSTAND EXPOSURE TO 260°C PEAK TEMPERATURE FOR 20 SECONDS IN WAVE SOLDER, INFRA-RED OR VAPOR PHASE SOLDER PROCESS.

PART NUMBERS WITHOUT "H" SUFFIX WILL WITHSTAND EXPOSURE TO 260°C PEAK TEMPERATURE FOR WAVE SOLDER PROCESS.
- THIS PRODUCT MEETS EUROPEAN UNION DIRECTIVES AND OTHER COUNTRY REGULATION AS DESCRIBED IN GS-22-008.
- PLATING OPTIONS:
MAY BE EITHER GOLD OR GXT PLATED AT MANUFACTURER'S OPTION.
- "THIS PRODUCT HAS 100% TIN PLATING IN THE INTERFACE AND HAS NOT BEEN TESTED FOR WHISKER GROWTH IN ALL INTERCONNECT ENVIRONMENTS."

mat'l. code		surface ISO 1302 <input checked="" type="checkbox"/>	tolerance ISO 406 ISO 1101	projection 	product family HEADER	
ltr	ecn	no	dr	date	tolerances unless otherwise specified	
E					angles linear .xx±.01/0.3 .xxx±.005/0.13 0'±2' .xxx±.0020/0.051	
					INCH/MM	
					scale 4:1	
dr		M.CLOUSER		7/14/94		
enr		L.FYE		7/14/94		
chr		L.FYE		7/14/94		
appd		L.FYE		7/14/94		
sheet index	revision sheet					title FRICION LATCH HEADER SINGLE ROW VERT. SELF RET. dwg no 87319 sheet 2 of 2 size A3 type Product Customer Drawing