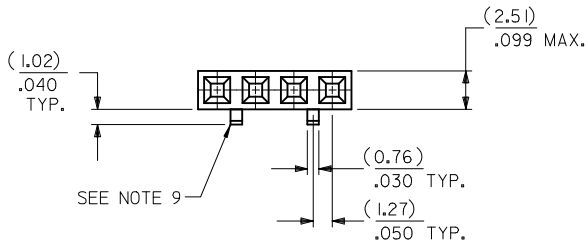


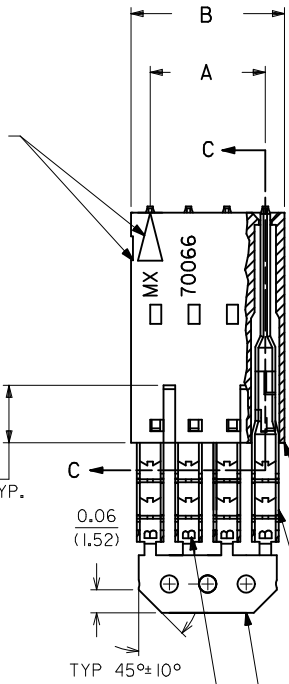
OPTION D

NOTES:

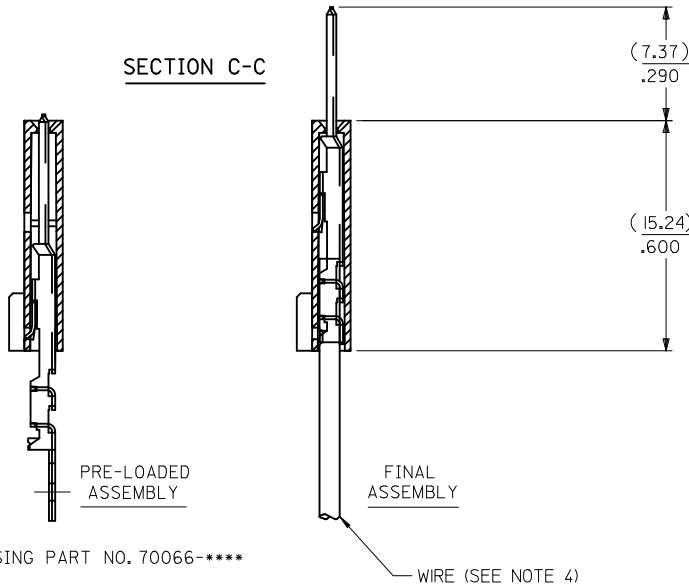
- MATERIAL: HOUSING - G.F. POLYESTER, 94V-0
TERMINAL - PHOSPHOR BRONZE
- FINISH: 0.76 MICROMETERS/30 MICROINCHES MINIMUM GOLD
IN SELECT AREA
1.91 MICROMETERS/75 MICROINCHES MINIMUM TIN
IN SELECT AREA
OVER NICKEL UNDERPLATE OVER-ALL.
- PRODUCT SPECIFICATION: PS-70400
- TO BE USED WITH 26 AWG. STANDARD WIRE WITH
1.35/.053 DIAMETER MAXIMUM INSULATION.
- SEE CHART FOR CIRCUIT SIZES.
- STANDARD PACKAGING PER PK-70873-0001. OPTIONAL
PACKAGING MAY BE AVAILABLE, REQUEST DRAWING
PK-70475.
- PARTS STACKABLE END TO END ON 2.54/.100 CENTERS
- SEE DRAWING SDA-70457-**** (SHEET 3) FOR OPTIONAL
HOUSING DETAILS.
- 4 CIRCUIT SHOWN. 3-25 CIRCUITS HAVE 2 RIBS.
- TO MATE WITH MOLEX PART NUMBERS: 70018-0000,
70022-****, 70104-****.
- 2 CIRCUIT ASSEMBLIES SUPPLIED AS GROUPED PAIRS.



CIRCUIT NO. 1
IDENTIFICATION
SLOT OR ARROW



SECTION C-C



HOUSING PART NO. 70066-****
TERMINAL PART NO. 70110-****

WIRE (SEE NOTE 4)

CKT. SIZE	A	B	EDP. NO.	ENG. NO.
2	(2.54) .100	(5.05) .199	14-44-2902	A-70475-1296
3	(5.08) .200	(7.59) .299	14-44-2903	A-70475-1297
4	(7.62) .300	(10.13) .399	14-44-2904	A-70475-1298
5	(10.16) .400	(12.67) .499	14-44-2905	A-70475-1299
6	(12.70) .500	(15.21) .599	14-44-2906	A-70475-1300
7	(15.24) .600	(17.75) .699	14-44-2907	A-70475-1301
8	(17.78) .700	(20.29) .799	14-44-2908	A-70475-1302
9	(20.32) .800	(22.83) .899	14-44-2909	A-70475-1303
10	(22.86) .900	(25.37) .999	14-44-2910	A-70475-1304
11	(25.54) 1.000	(27.91) 1.099	14-44-2911	A-70475-1305
12	(27.94) 1.100	(30.45) 1.199	14-44-2912	A-70475-1306
13	(30.48) 1.200	(32.99) 1.299	14-44-2913	A-70475-1307
14	(33.02) 1.300	(35.53) 1.399	14-44-2914	A-70475-1308
15	(35.56) 1.400	(38.07) 1.499	14-44-2915	A-70475-1309
16	(38.01) 1.500	(40.61) 1.599	14-44-2916	A-70475-1310
17	(40.64) 1.600	(43.15) 1.699	14-44-2917	A-70475-1311
18	(43.18) 1.700	(45.69) 1.799	14-44-2918	A-70475-1312
19	(45.72) 1.800	(48.23) 1.899	14-44-2919	A-70475-1313
20	(48.26) 1.900	(50.77) 1.999	14-44-2920	A-70475-1314
21	(50.80) 2.000	(53.31) 2.099	14-44-2921	A-70475-1315
22	(53.34) 2.100	(55.85) 2.199	14-44-2922	A-70475-1316
23	(55.88) 2.200	(58.39) 2.299	14-44-2923	A-70475-1317
24	(58.42) 2.300	(60.93) 2.399	14-44-2924	A-70475-1318
25	(60.96) 2.400	(63.47) 2.499	14-44-2925	A-70475-1319



I.D. SLOT CODE TO WIRE GAUGE CHART	
I.D. SLOT CODE	WIRE GAUGE
B	26 AWG.

PLATING CODE (STRIPE ON CARRIER STRIP)	
PLATING	COLOR
30 GOLD	RED

ADD GEN TOLERANCES	DESCRIPTION	QUALITY SYMBOLS
EC NO: UCP2011-3892	2011/06/27	▽=0
DRWINMS IBARRA	2011/07/07	▽=0
CHKD:MORGAN		▽=0
APPR:SMILLER		

GENERAL TOLERANCES (UNLESS SPECIFIED)	
mm	INCH
4 PLACES ± .010	± .0004
3 PLACES ± .010	± .0004
2 PLACES ± 0.25	± .010
1 PLACE ± 0.35	± .014
ANGULAR ± 1/2°	

DIMENSION STYLE	
MM/IN	SCALE
DRAWN BY: WAZ	DATE: 10/13/84
CHECKED BY: WAZ	DATE: 10/13/84
APPROVED BY: RL	DATE: 10/13/84
MATERIAL NO. SEE TABLE	DOCUMENT NO. SDA-70475-1296-1319

SCALE	DESIGN UNITS	THIRD ANGLE PROJECTION
4:1	INCH	ASSEMBLY, SL CONNECTOR SINGLE ROW 2.54/.100 GRID
MOLEX MOLEX INCORPORATED		SHEET NO. 1 OF 1