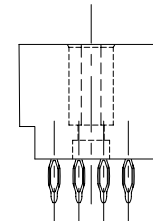
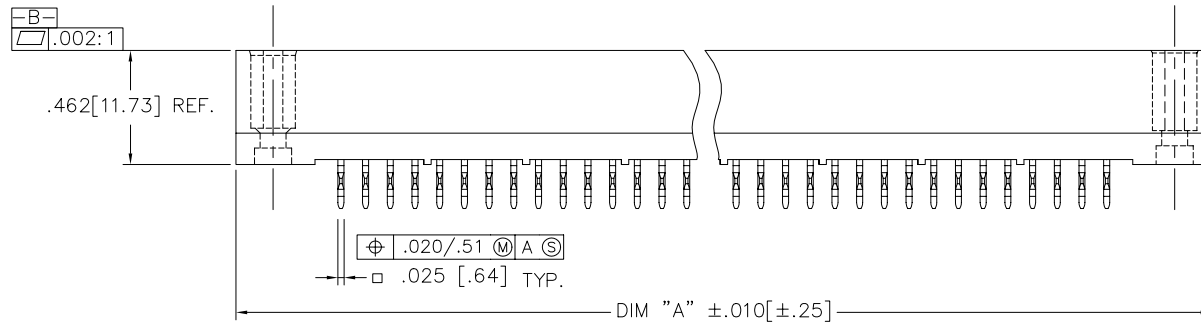
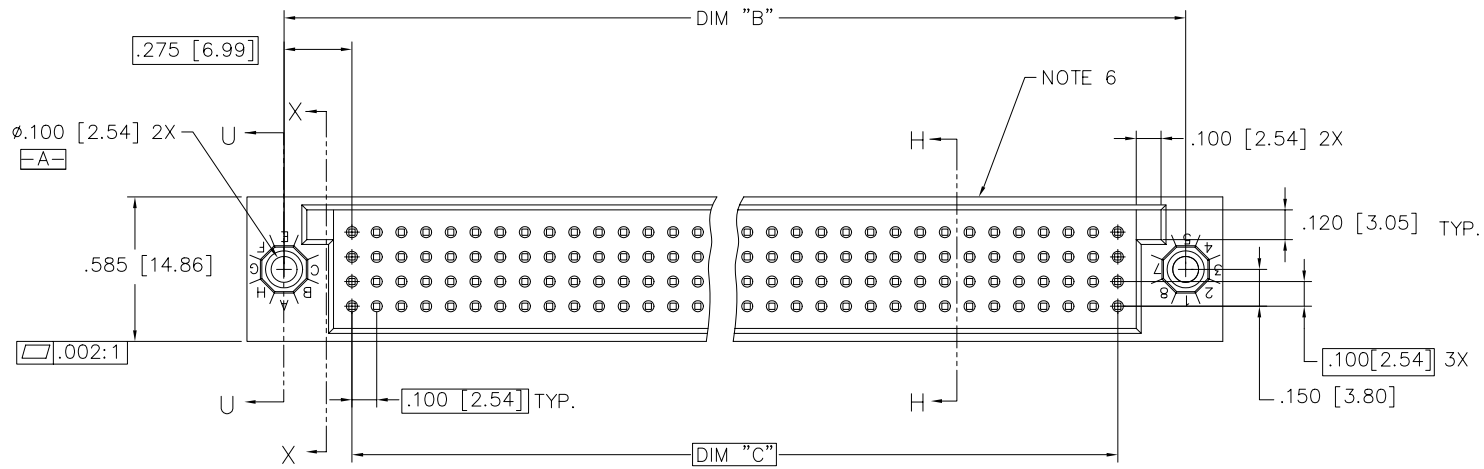


PRODUCT NUMBER
SEE NOTE 1

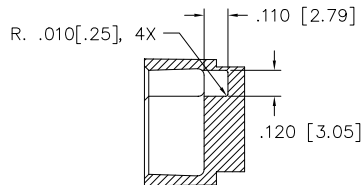


mat'l. code NOTE 3		surface ISO 1302 ✓		tolerance ISO 406 ISO 1101		projection INCH/MM		product family HPC	
ltr	ecn	no	dr	date	tolerances unless otherwise specified		INCH/MM	title	
B	v40278	PDP	1/18/94		angles	linear		4 ROW VERTICAL HEADER	
C	v40839	GIP	5/04/94				scale 1:1	PRESS FIT, W/SPECIAL POCKETS	
D	v40930	MDF	5/31/94		σ±2'			dwg no 50734 sheet 1 of 2 size A3	
E	v41586	SAR	11/23/94	dr	G. PETERS	9/19/93	FCI	type Product Customer Drawing	
F	v91033	HTB	5/03/99	enr	S. CLARK	9/19/93			
G	v00278	JWS	2/04/00	chr	S. CLARK	12/13/93			
H	M06-0261	MNR	7/10/06	appd	S. CLARK	12/14/93			
sheet index	revision	H	H						
	sheet	1	2						

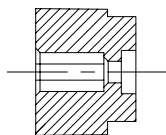
PRODUCT NUMBER	DIM.	LENGTH FORMULAS
SEE NOTE 1	DIM "A"	.100/2.54 x NO. OF COLUMNS + .75/19.1
	DIM "B"	.100/2.54 x NO. OF COLUMNS + .45/11.4
	DIM "C"	.100/2.54 x NO. OF COLUMNS - .10/2.5

NOTES:

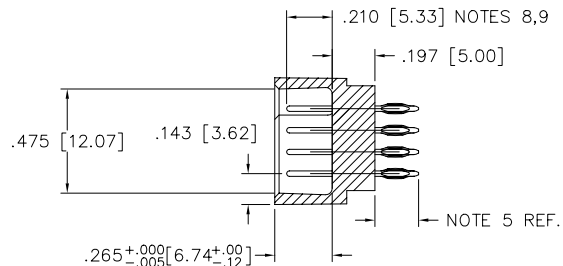
- PRODUCT NUMBERING CODE:
 $50734 - X\ YYY\ Z$
 X: TAIL LENGTH (NOTE 5)
 YYY: NO. OF POSITIONS (NOTE 2)
 Z: PLATING (NOTE 4)
 BASE NUMBER
- PRODUCT NUMBERING CODE FOR SELECT LOAD PART NUMBERS:
 $50734 - XYYYY$
 X: SEQUENCE NUMBER
 ALWAYS 'XX'
 BASE NUMBER
- THIS PRODUCT IS CONFIGURED IN SIZE OF 6 THRU 80 COLUMNS IN INCREMENTS OF ONE.
 i.e.: 6,7,8,9.....79, 80
- MATERIALS:
 HOUSING - GLASS AND MINERAL FILLED
 HIGH TEMP. THERMOPLASTIC. FLAME RETARDANT PER UL94V-0. COLOR: BLACK.
 PINS - PHOS BRONZE
- PLATING OPTIONS:
 A = 50u" Ni UNDER ALL WITH 30u" Au ON CONTACT AREA, SnPb ON PCB INTERFACE AND Au FLASH ON ALL OTHER AREAS.
 B = 50u" Ni UNDER ALL WITH 30u" GXT ON CONTACT AREA, SnPb ON PCB INTERFACE AND Au FLASH ON ALL OTHER AREAS.
- TAIL LENGTH OPTIONS:
 FOR PLATING OPTIONS "A" & "B" ONLY:
 A = .177/4.5
 G = .250/6.35
- MANUFACTURE'S NAME, P/N, & LOT CODE TO APPEAR ON THIS SURFACE PER BUS-12-108.
- FOR DOCUMENTATION MENU, SEE BUS-01-057.
- REFERENCE 50807 FOR FIRST MATE LAST BREAK MATING LENGTHS AVAILABLE AND FOR SELECTIVELY LOADED HEADER WORKSHEET. MATING LENGTHS WILL BE .10" SHORTER THAN SPECIFIED ON WORKSHEET DUE TO THE .197 DIMENSION SHOWN IN SECTION H-H.
- TO ASSURE PROPER INSTALLATION, TOOLING AS SPECIFIED IN INSTRUCTION MANUAL 155915-001 MUST BE USED. MATING LENGTH WILL BE $\pm .002/.05$ AFTER INSTALLATION.
- $\phi .0453[1.151]$ DRILLED HOLES PLATED w/.0003 [.007] MIN. SnPb OVER .001 [.03] to .003 [.08] Cu. PLATING TO ACHIEVE A $\phi .040 \pm .003[1.02 \pm .08]$ HOLE.



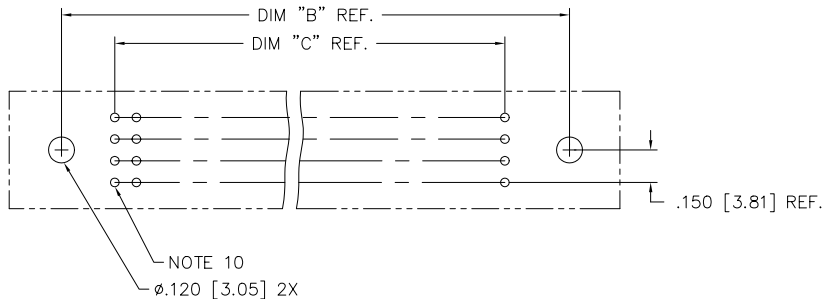
SECTION X-X



SECTION U-U



SECTION H-H



RECOMMENDED PCB LAYOUT
 ALL HOLES LOCATED ON .100[2.54] GRID
 UNLESS OTHERWISE SPECIFIED

mat'l. code		surface ISO 1302 ✓	tolerance ISO 406 ISO 1101	projection INCH/MM	product family HPC
ltr	ecn	no	dr	date	tolerances unless otherwise specified
H					angles linear .xx ±.01/.3 .xxx ±.005/.13 .xxxx ±.0020/.051
					scale 1:1
					dr G. PETERS 9/19/93
					enr S. CLARK 9/19/93
					chr S. CLARK 12/13/93
					appd S. CLARK 12/14/93
sheet index		revision sheet			
				title 4 ROW VERTICAL HEADER PRESS FIT, W/SPECIAL POCKETS sheet 2 of 2 size 50734 A3 type Product Customer Drawing	