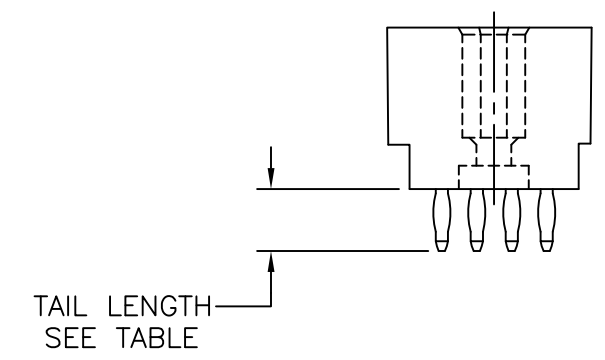
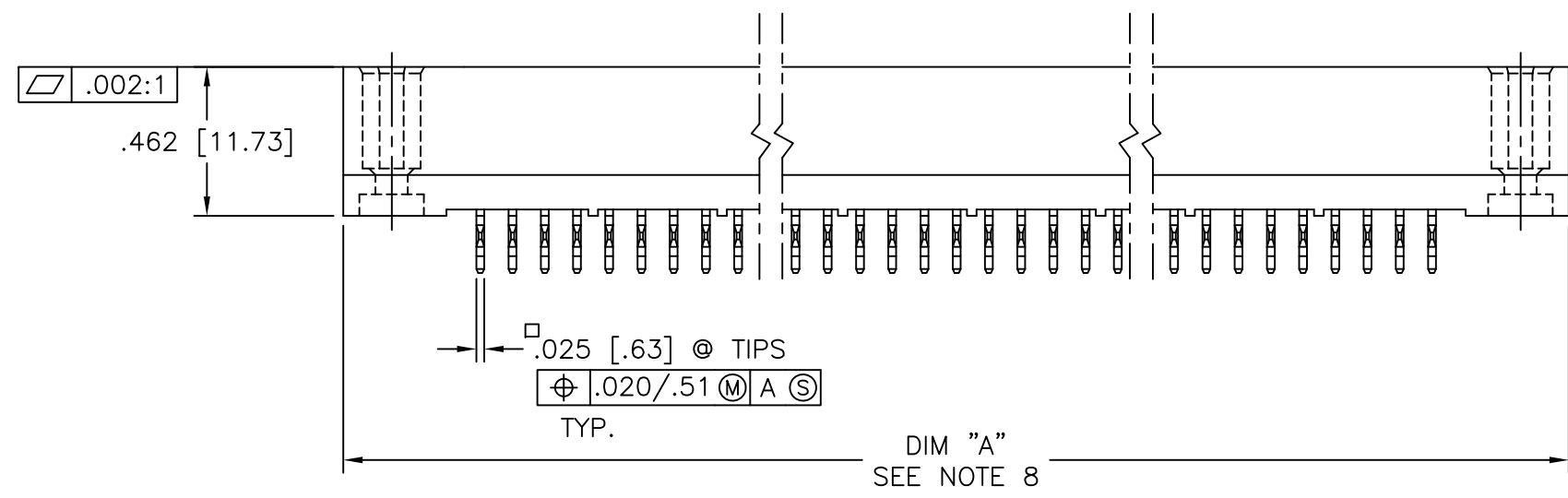
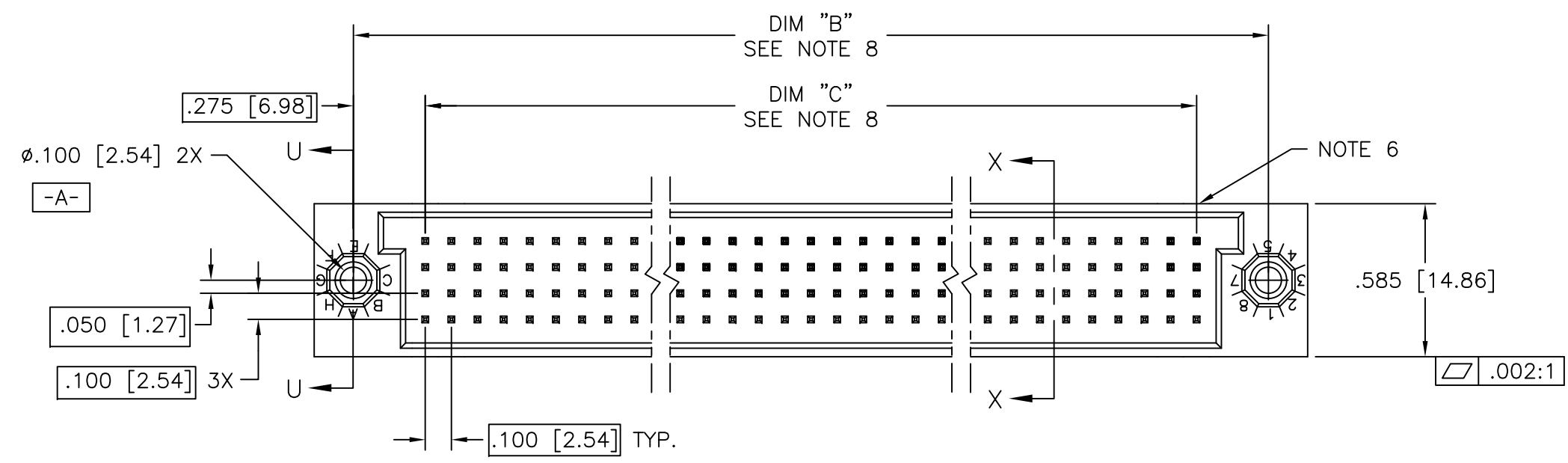


PRODUCT NUMBER
SEE TABLE

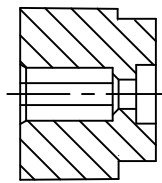


mat'l. code		surface		tolerance		projection		product family	
-		ISO 1302 ✓		ISO 406 ISO 1101				HPC	
ltr	ecn no	dr	date	tolerances unless otherwise specified		INCH/MM		title	
J	ELX-I-19010	MJA	10/08/14	angles	linear			4 ROW VERTICAL HEADER	
-	-	-	-					MULTI-PLATED P.F. PINS, 0 G.P.	
D	v90011	HTB	1/06/99	$\sigma \pm 2'$		scale 1:1		dwg no	
E	v00276	JWS	2/02/00	dr	P. PARSONS	4/12/94		sheet 1 of 5 size	
F	v05-0776	DCH	8/15/05	enr	M JACOB	10/08/14		50760 A3	
G	v05-1048	DAI	11/16/05	chr	ALOSIUS STALIN	10/08/14			
H	M06-0261	AEA	7/10/06	appd	BIJU K PAUL	10/08/14		type Product Customer Drawing	
sheet	revision	J	H	J	H	A			
index	sheet	1	2	3	4	5			

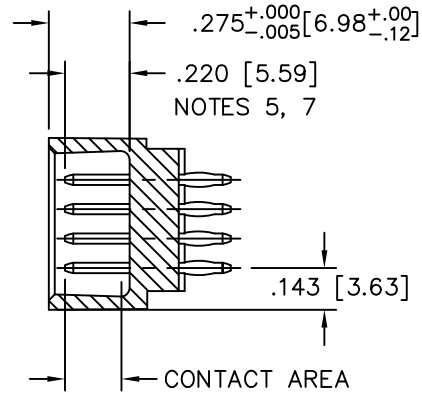


Copyright FCI

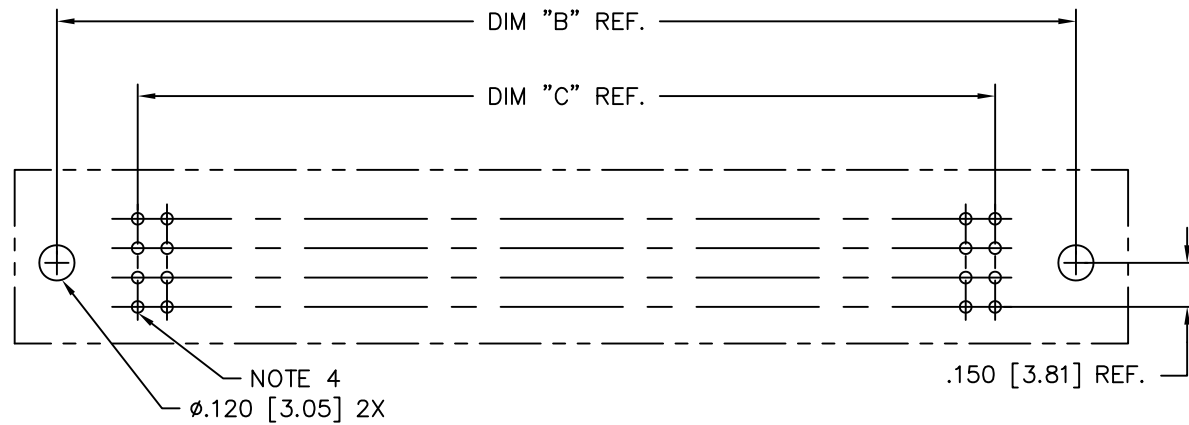
PRODUCT NUMBER
SEE TABLE



SECTION U-U



SECTION X-X



RECOMMENDED PCB LAYOUT
(ALL HOLES LOCATED ON .100/2.54 GRID
UNLESS OTHERWISE SPECIFIED)

NOTES:

- ① PRODUCT NUMBERING CODE:
50760 - X YYY Z LF
 - LEAD FREE (OPTIONAL)
 - TAIL LENGTH (SEE TABLE)
 - NO. OF POSITIONS (NOTE 2)
 - PLATING (SEE TABLE)
 - BASE NUMBER
- ② THIS PRODUCT IS CONFIGURED IN SIZES OF 6 thru 80 COLUMNS IN INCREMENTS OF ONE.
i.e.: 6,7,8,9,.....79,80.
- ③ HOUSING MATERIAL: GLASS AND MINERAL FILLED HIGH TEMP. THERMOPLASTIC. FLAME RETARDANT PER UL94V-0. COLOR: BLACK.
PIN MATERIAL: PHOS BRONZE
- ④ ϕ .0453/1.151 DRILLED HOLE PLATED WITH .0003/.007 MIN. SnPb OVER .001/.03 to .003/.08 Cu. PLATING TO ACHIEVE A ϕ .040 \pm .003/1.02 \pm .08 HOLE.
- ⑤ TO ASSURE PROPER INSTALLATION: TOOLING, AS SPECIFIED IN INSTRUCTION MANUAL 155915-001 MUST BE USED. PIN MATING LENGTH WILL BE \pm .002/.05 AFTER INSTALLATION.
- ⑥ COMPANY NAME, PART NUMBER AND LOT CODE TO APPEAR ON THIS SURFACE PER BUS-22-108.
- ⑦ REFERENCE 50807 FOR F.M.L.B. AVAILABLE OPTIONS AND WORKSHEET.
- ⑧ LENGTH DIMENSION CALCULATIONS:
DIM A: .100/2.54 X NO. OF COLUMNS + .750/19.05
DIM B: .100/2.54 X NO. OF COLUMNS + .450/11.43
DIM C: .100/2.54 X NO. OF COLUMNS - .100/2.54
9. THIS PRODUCT (WITH "LF" SUFFIX) MEETS EUROPEAN UNION DIRECTIVES AND OTHER COUNTRY REGULATIONS AS DESCRIBED IN GS-22-008.
10. THIS HOUSING WILL WITHSTAND EXPOSURE TO 260 °C PEAK TEMPERATURE FOR 10-30 SECONDS IN A CONVECTION, INFRA-RED OR VAPOR PHASE OVEN.



Copyright FCI

mat'l. code		surface		tolerance		projection		product family	
-		ISO 1302 ✓		ISO 406 ISO 1101				HPC	
ltr	ecn no	dr	date	tolerances unless otherwise specified					
H				angles	linear	.xx \pm .01/.3		title	
				σ \pm 2'		.xxx \pm .005/.13		4 ROW VERTICAL HEADER	
						.xxx \pm .0020/.051		MULTI-PLATED P.F. PINS, 0 G.P.	
		dr	P. PARSONS	4/12/94	scale 1:1		dwg no		
		enr	J. AFTON	4/11/95			sheet 2 of 5		
		chr	G. PETERS	4/15/94			50760		size
		appd	S. CLARK	4/18/94			A3		type
sheet index		revision sheet		Product Customer Drawing					

PRODUCT NO.	NUMBER OF POSITIONS	PLATING: CONTACT AREA	MIN PLATING: PRESS-FIT AREA	MIN PLATING: TAIL AREA	TAIL LENGTH REF
50760-AYYYA	YYY	30u"/0.76u Au	40u"/1.02u SnPb	40u"/1.02u SnPb	.177 / 4.50
50760-AYYYG	YYY	30u"/0.76u Au	40u"/1.02u SnPb	40u"/1.02u SnPb	.250 / 6.35
50760-BYYYA	YYY	30u"/0.76u GXT	40u"/1.02u SnPb	40u"/1.02u SnPb	.177 / 4.50
50760-BYYALF	YYY	30u"/0.76u GXT	40u"/1.02u Sn	40u"/1.02u Sn	.177 / 4.50
50760-BYYYG	YYY	30u"/0.76u GXT	40u"/1.02u SnPb	40u"/1.02u SnPb	.250 / 6.35
50760-BYYGLF	YYY	30u"/0.76u GXT	40u"/1.02u Sn	40u"/1.02u Sn	.250 / 6.35
50760-CYYYC	YYY	30u"/0.76u Au	40u"/1.02u SnPb	30u"/0.76u Au	.533 / 13.54
50760-CYYD	YYY	30u"/0.76u Au	40u"/1.02u SnPb	30u"/0.76u Au	.733 / 18.62
50760-DYYYC	YYY	30u"/0.76u GXT	40u"/1.02u SnPb	30u"/0.76u GXT	.533 / 13.54
50760-DYYCLF	YYY	30u"/0.76u GXT	40u"/1.02u Sn	30u"/0.76u GXT	.533 / 13.54
50760-DYYD	YYY	30u"/0.76u GXT	40u"/1.02u SnPb	30u"/0.76u GXT	.733 / 18.62
50760-DYYDLF	YYY	30u"/0.76u GXT	40u"/1.02u Sn	30u"/0.76u GXT	.733 / 18.62
50760-XX003	180	30u"/0.76u GXT	30u"/0.76u GXT	Au FLASH	SEE SHEET 4
50760-XX003LF	180	30u"/0.76u GXT	30u"/0.76u GXT	Au FLASH	SEE SHEET 4
50760-XX036	80	30u"/0.76u Au	40u"/1.02u SnPb	40u"/1.02u SnPb	SEE SHEET 5
50760-XX036LF	80	30u"/0.76u Au	40u"/1.02u Sn	40u"/1.02u Sn	SEE SHEET 5



Copyright FCI

mat'l. code		surface		tolerance		projection		product family	
-		ISO 1302 ✓		ISO 406 ISO 1101				HPC	
ltr	ecn no	dr	date	tolerances unless otherwise specified		INCH/MM		title	
J				angles	linear			4 ROW VERTICAL HEADER	
								MULTI-PLATED P.F. PINS, 0 G.P.	
				σ±2'				dwg no	
				dr	P. PARSONS	4/12/94			sheet 3 of 5
				enr	M JACOB	10/08/14			size
				chr	ALOSIUS STALIN	10/08/14			A3
				appd	BIJU K PAUL	10/08/14			type
sheet index		revision sheet						Product Customer Drawing	

PRODUCT NUMBER
50760-XX003
50760-XX003LF

SPECIAL LOAD 50760-XX003 AND 50760-XX003LF SHOWN ON THIS SHEET

	1	5	10	15	20	25	30	35	40	45
D	B									B
C										
B										
A										

PIN
1

ITEM KEY	SIGNAL DATA			
	SIZE 4 x 45	TOTAL NO. OF POSITIONS -180	NO. OF POSITIONS LOADED - 180	
	PLATING - 30u"/.76u GXT	PRESS FIT STYLE		
	QTY.	MATING LENGTH	TAIL LENGTH	TOTAL PIN LENGTH
A	178	.180 / 4.57	.557 / 14.15	.924 / 23.47
B	2	.210 / 5.33	.587 / 14.91	.984 / 24.99

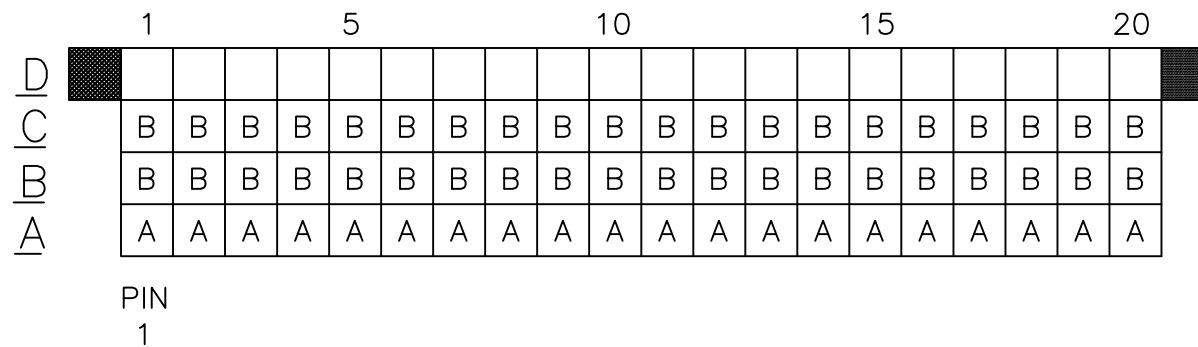
PLATING NOTE: POST-PLATED

- ALL POSITIONS ARE LOADED WITH "A", EXCEPT AS SHOWN.
- COLUMN 1, ROW A IS DESIGNATED AS SIGNAL PIN 1, AS VIEWED FROM THE MATING FACE.

mat'l. code		surface		tolerance		projection		product family	
-		ISO 1302 ✓		ISO 406 ISO 1101				HPC	
ltr	ecn no	dr	date	tolerances unless otherwise specified		INCH/MM		title	
H				angles	linear	.xx ±.01/.3 .xxx ±.005/.13 .xxxx ±.0020/.051		4 ROW VERTICAL HEADER MULTI-PLATED P.F. PINS, 0 G.P.	
				σ±2'		scale 1:1		dwg no	
				dr	P. PARSONS	4/12/94		sheet 4 of 5 size	
				enr	J. AFTON	4/11/95		50760	
				chr	G. PETERS	4/15/94		A3	
				appd	S. CLARK	4/18/94		type Product Customer Drawing	
sheet index	revision sheet								

PRODUCT NUMBER
50760-XX036
50760-XX036LF

SPECIAL LOAD 50760-XX036 AND 50760-XX036LF SHOWN ON THIS SHEET



ITEM KEY	SIGNAL DATA		
	SIZE 4 x 20	TOTAL NO. OF POSITIONS - 80	NO. OF POSITIONS LOADED - 60
	PLATING - 30u"/.76u GXT DUPLEX		PRESS FIT STYLE
	QTY.	MATING LENGTH	TAIL LENGTH
A	20	.220 / 5.59	.250 / 6.35
B	40	.180 / 4.57	.250 / 6.35

- ALL BLANK POSITIONS ARE NOT LOADED
- COLUMN 1, ROW A IS DESIGNATED AS SIGNAL PIN 1, AS VIEWED FROM THE MATING FACE.

mat'l. code		surface		tolerance		projection		product family	
-		ISO 1302 ✓		ISO 406 ISO 1101				HPC	
ltr	ecn no	dr	date	tolerances unless otherwise specified		INCH/MM		title	
A				angles	linear	.xx ±.01/.3		4 ROW VERTICAL HEADER	
						.xxx ±.005/.13		MULTI-PLATED P.F. PINS, 0 G.P.	
				σ±2'		.xxx ±.0020/.051		scale 1:1	
		dr	M JACOB	10/08/14			dwg no		sheet 5 of 5
		enr	M JACOB	10/08/14			50760		A3
		chr	ALOSIUS STALIN	10/08/14			type		Product Customer Drawing
		appd	BIJU K PAUL	10/08/14					
sheet index	revision sheet								