

NOTES:

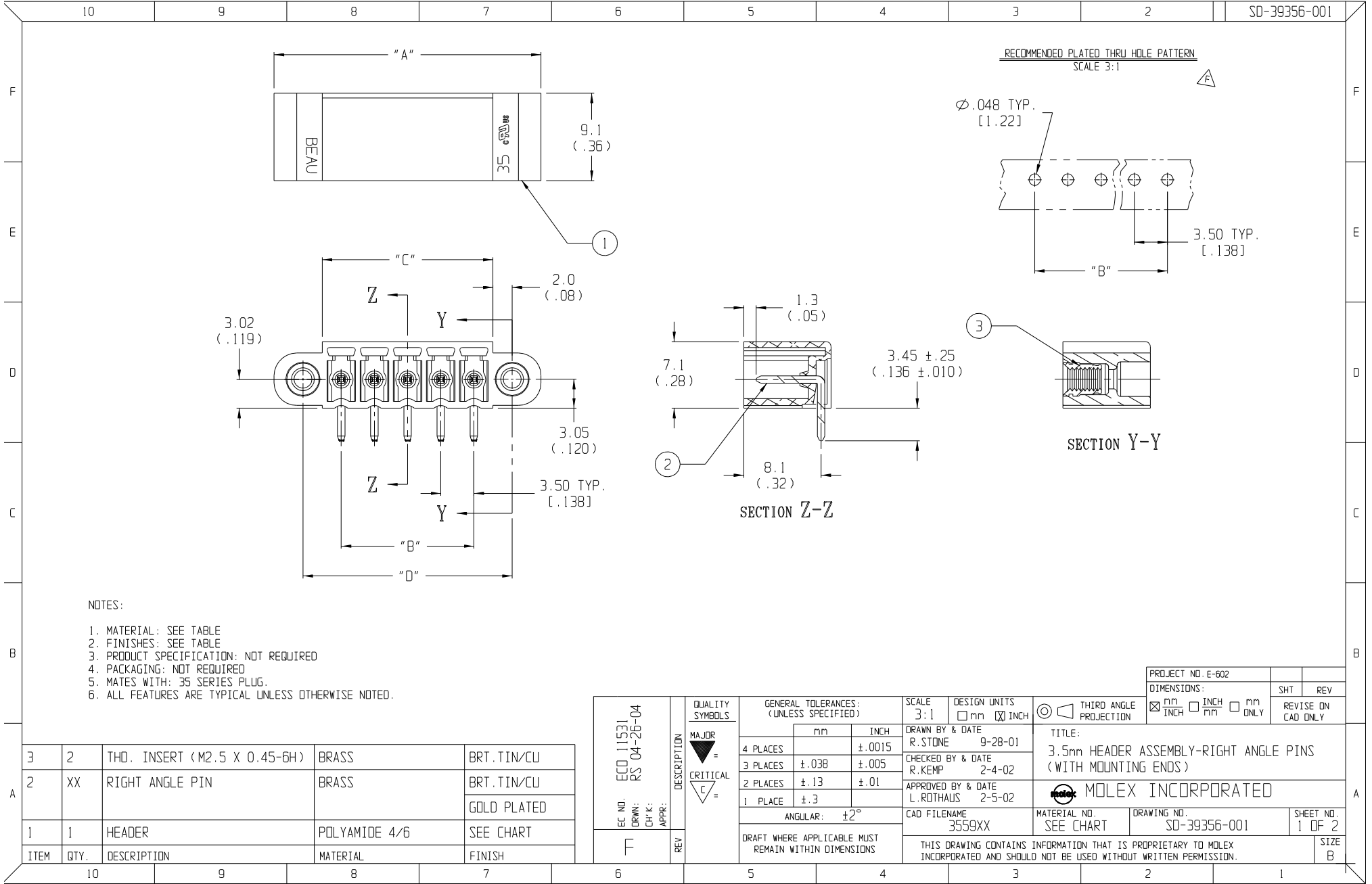
1. MATERIAL: SEE TABLE
2. FINISHES: SEE TABLE
3. PRODUCT SPECIFICATION: NOT REQUIRED
4. PACKAGING: NOT REQUIRED
5. MATES WITH: 35 SERIES PLUG.
6. ALL FEATURES ARE TYPICAL UNLESS OTHERWISE NOTED.

3	2	THD. INSERT (M2.5 X 0.45-6H)	BRASS	BRT. TIN/CU
2	XX	RIGHT ANGLE PIN	BRASS	BRT. TIN/CU GOLD PLATED
1	1	HEADER	POLYAMIDE 4/6	SEE CHART
ITEM	QTY.	DESCRIPTION	MATERIAL	FINISH

EC NO. ECO 11531	DRWN: RS 04-26-04	CHK'K:	APPR:
REV	DESCRIPTION	QUALITY SYMBOLS	
		MAJOR	
		CRITICAL	

GENERAL TOLERANCES: (UNLESS SPECIFIED)		SCALE 3:1	DESIGN UNITS <input type="checkbox"/> mm <input checked="" type="checkbox"/> INCH	THIRD ANGLE PROJECTION
	mm	INCH	DRAWN BY & DATE R. STONE 9-28-01	TITLE: 3.5mm HEADER ASSEMBLY-RIGHT ANGLE PINS (WITH MOUNTING ENDS)
4 PLACES	±.0015	±.0015	CHECKED BY & DATE R. KEMP 2-4-02	
3 PLACES	±.0038	±.005	APPROVED BY & DATE L. ROTHHAUS 2-5-02	MOLEX INCORPORATED
2 PLACES	±.13	±.01	CAD FILENAME 3559XX	
1 PLACE	±.3		MATERIAL NO. SEE CHART	DRAWING NO. SD-39356-001
ANGULAR: ±2°		THIS DRAWING CONTAINS INFORMATION THAT IS PROPRIETARY TO MOLEX INCORPORATED AND SHOULD NOT BE USED WITHOUT WRITTEN PERMISSION.		SHEET NO. 1 OF 2
DRAFT WHERE APPLICABLE MUST REMAIN WITHIN DIMENSIONS				SIZE B

PROJECT NO. E-602		
DIMENSIONS:	SHT	REV
<input checked="" type="checkbox"/> mm <input type="checkbox"/> INCH	<input type="checkbox"/> mm <input type="checkbox"/> ONLY	REVISE ON CAD ONLY



BLUE MATERIAL NO.	ORANGE MATERIAL NO.	GREEN MATERIAL NO.	BLACK MATERIAL NO.	BLACK (GOLD OPT) MATERIAL NO.	NUMBER OF CIRCUITS "XX"	DIM. "A"	DIM. "B"	DIM. "C" ±.13 (.010)	DIM. "D" ±.13 (.010)
393563002	393562002	393561002	393560002	393560102	02	17.7 (.70)	3.50 (.138)	7.51 (.296)	11.59 (.456)
393563003	393562003	393561003	393560003	393560103	03	21.2 (.83)	7.00 (.276)	11.01 (.433)	15.09 (.594)
393563004	393562004	393561004	393560004	393560104	04	24.7 (.97)	10.50 (.413)	14.51 (.571)	18.59 (.732)
393563005	393562005	393561005	393560005	393560105	05	28.2 (1.11)	14.00 (.551)	18.01 (.709)	22.09 (.869)
393563006	393562006	393561006	393560006	393560106	06	31.7 (1.25)	17.50 (.689)	21.51 (.847)	25.59 (1.007)
393563007	393562007	393561007	393560007	393560107	07	35.2 (1.39)	21.00 (.827)	25.01 (.985)	29.09 (1.145)
393563008	393562008	393561008	393560008	393560108	08	38.7 (1.52)	24.50 (.965)	28.51 (1.122)	32.59 (1.283)
393563009	393562009	393561009	393560009	393560109	09	42.2 (1.66)	28.00 (1.102)	32.01 (1.260)	36.09 (1.421)
393563010	393562010	393561010	393560010	393560110	10	45.7 (1.80)	31.50 (1.240)	35.51 (1.398)	39.59 (1.558)
393563011	393562011	393561011	393560011	393560111	11	49.2 (1.94)	35.00 (1.378)	39.01 (1.536)	43.09 (1.696)
393563012	393562012	393561012	393560012	393560112	12	52.7 (2.07)	38.50 (1.516)	42.51 (1.674)	46.59 (1.834)
393563013	393562013	393561013	393560013	393560113	13	56.2 (2.21)	42.00 (1.654)	46.01 (1.811)	50.09 (1.972)
393563014	393562014	393561014	393560014	393560114	14	59.7 (2.35)	45.50 (1.791)	49.51 (1.949)	53.59 (2.110)
393563015	393562015	393561015	393560015	393560115	15	63.2 (2.49)	49.00 (1.929)	53.01 (2.087)	57.09 (2.247)
393563016	393562016	393561016	393560016	393560116	16	66.7 (2.63)	52.50 (2.067)	56.51 (2.225)	60.59 (2.385)
393563017	393562017	393561017	393560017	393560117	17	70.2 (2.76)	56.00 (2.205)	60.01 (2.363)	64.09 (2.523)
393563018	393562018	393561018	393560018	393560118	18	73.7 (2.90)	59.50 (2.343)	63.51 (2.500)	67.59 (2.661)
393563019	393562019	393561019	393560019	393560119	19	77.2 (3.04)	63.00 (2.480)	67.01 (2.638)	71.09 (2.799)
393563020	393562020	393561020	393560020	393560120	20	80.7 (3.18)	66.50 (2.618)	70.51 (2.776)	74.59 (2.936)

EC NO. SEE SHT. 1 DRWN: CH'K: APPR: F	DESCRIPTION REV	QUALITY SYMBOLS MAJOR = CRITICAL =	GENERAL TOLERANCES: (UNLESS SPECIFIED) mm INCH 4 PLACES ±.0015 3 PLACES ±.008 ±.005 2 PLACES ±.13 ±.01 1 PLACE ±.3 ANGULAR: ±2° DRAFT WHERE APPLICABLE MUST REMAIN WITHIN DIMENSIONS	SCALE 3:1 DESIGN UNITS <input type="checkbox"/> mm <input checked="" type="checkbox"/> INCH DRAWN BY & DATE R.STONE 9-28-01 CHECKED BY & DATE R.KEMP 2-4-02 APPROVED BY & DATE L.ROTHAUS 2-5-02 CAD FILENAME 3559XX	THIRD ANGLE PROJECTION TITLE: 3.5mm HEADER ASSEMBLY-RIGHT ANGLE PINS (WITH MOUNTING ENDS) MOLEX INCORPORATED MATERIAL NO. SEE CHART DRAWING NO. SD-39356-001 SHEET NO. 2 OF 2 SIZE B	PROJECT NO. E-602 DIMENSIONS: <input checked="" type="checkbox"/> mm <input type="checkbox"/> INCH <input type="checkbox"/> mm <input type="checkbox"/> INCH SHT REV REVISE ON CAD ONLY
		THIS DRAWING CONTAINS INFORMATION THAT IS PROPRIETARY TO MOLEX INCORPORATED AND SHOULD NOT BE USED WITHOUT WRITTEN PERMISSION.				