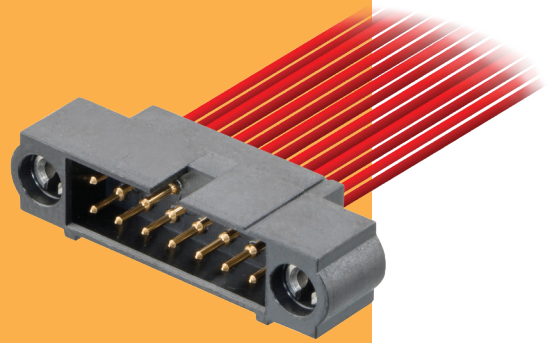


Datamate J-Tek Connectors

Male Crimp Kit 101Lok

- ❖ Part numbers are for a complete kit of a housing and the applicable number of contacts.
- ❖ 101Lok fixing gives secure, fast and simple mating; no special tooling required. Just a simple 101-degree turn is required to fix the connectors together.
- ❖ Connectors mate with Datamate J-Tek female connectors with applicable 101Lok fixings.
- ❖ Crimp contacts supplied loose.



DATAMATE J-TEK

101LOK		CALCULATION	
		A	$B + 12$
		B	Total no. of contacts - 2
		C	$B + 7$
TOOLS		WIRE STRIPPING DETAILS	
<p>Recommended Crimp Tool - M22520/2-01</p> <p>Positioner - Z80-193</p> <p>Contact Insertion/Removal Tool - Z80-280</p> <ul style="list-style-type: none"> ❖ Spare contacts shown on following pages. ❖ Instruction sheets available at www.harwin.com/instructions. 			
HOW TO ORDER			
M80 - 5 X1 XX 05 MC			
SERIES CODE			JACKSCREW
TYPE			MC 101Lok
C1 Small Bore (24-28 AWG)			
D1 Large Bore (22 AWG)			
TOTAL NO. OF CONTACTS			FINISH
04, 06, 08, 10, 12, 14, 20, 26, 34, 42, 50			05 Gold

All dimensions in mm.