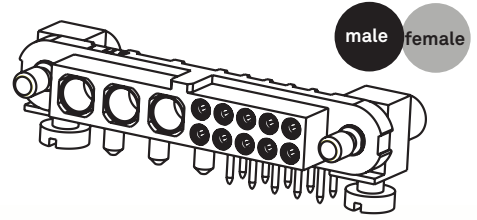
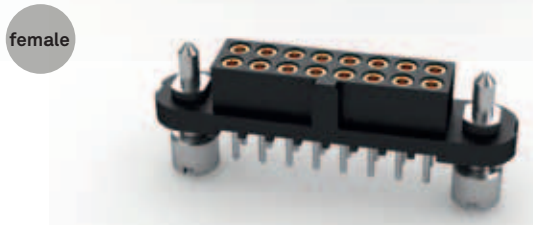
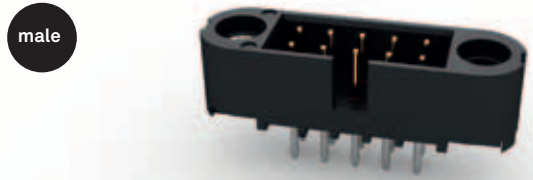


# 220 SERIES

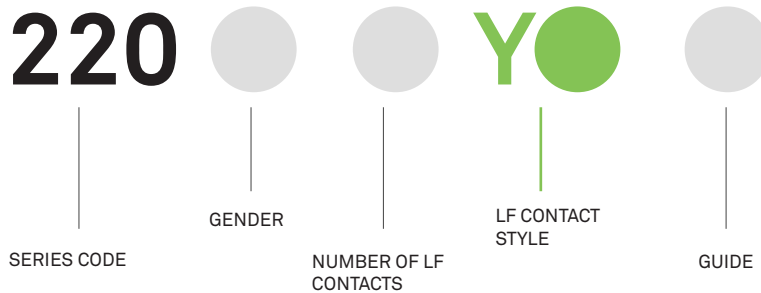


## PCB Connectors with straight LF contacts

- 1 Polarised mouldings
- 2 Fully shrouded contacts
- 3 Choice of PC Tail length
- 4 3 types of plating



### HOW TO ORDER / ASSEMBLED



### GLOSSARY / HOW TO ORDER

**GENDER**  
F/Female  
M/Male

**NUMBER OF LF CONTACTS**  
04 to 50

**GUIDES**  
Short list on the opposite page  
Complete list, see technical index (page 96).

**LF CONTACT STYLE**

- Y1/3.1mm Tails Gold + Tin/Lead
- Y3/4.6mm Tails Gold + Tin/Lead
- Y5/3.1mm Tails Gold
- Y6/4.6mm Tails Gold
- Y7/3.1mm Tails Gold + Tin
- Y8/5.5mm Tails Gold
- Y9/4.6mm Tails Gold + Tin

**RoHS RULES (w/ lead) :**

- No RoHS (with lead)
- RoHS (without lead)

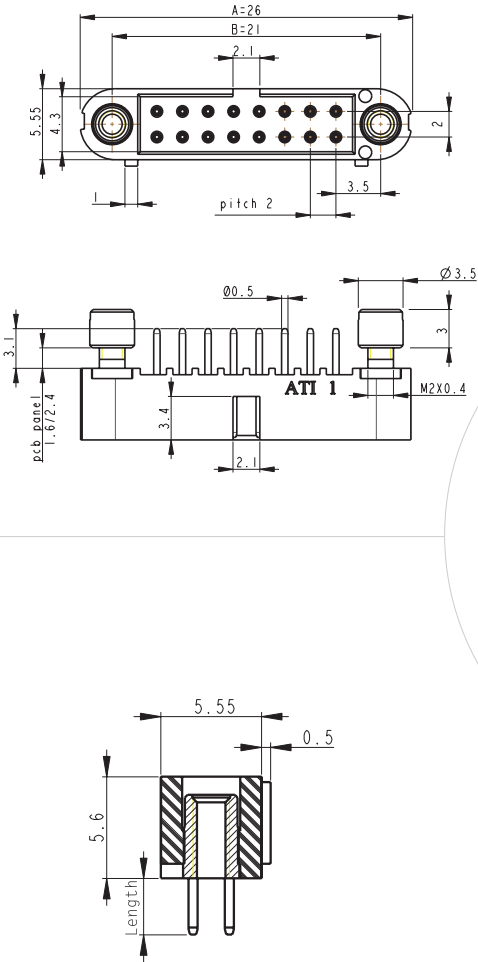
**USUAL GUIDES FOR FEMALE CONTACTS**

- B/3.3mm Jackscrew
- C/5.1mm Jackscrew
- H/With Hex. socket Jackscrew
- J/ AP/With Hex. slotted Jackscrew
- O/Without Jackscrews

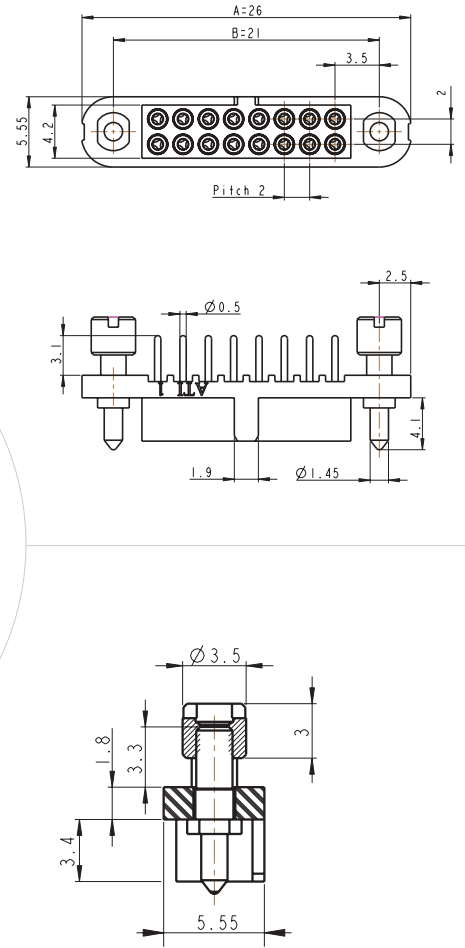
**USUAL GUIDES FOR MALE CONTACTS**

- P/3.5mm Jackscrew
- Q/5mm Jackscrew
- Y/Only lockable
- Z/ PZ/ QZ/ O/Without Jackscrews

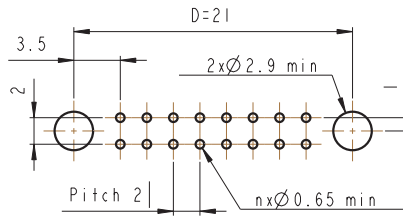
## DIMENSIONS / MALE



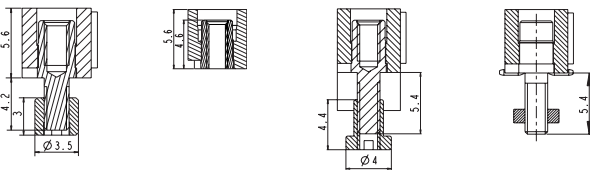
## DIMENSIONS / FEMALE



### PCB LAYOUT



## USUAL GUIDES / For male connectors



Locking torque for P/Q/Y: 0.17 to 0.20 Nm

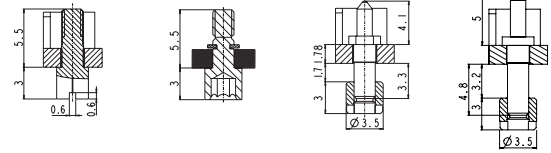
P/Q

Y

Z

PZ  
QZ

## USUAL GUIDES / For female connectors



Locking torque for AP/H: 0.20 Nm  
AP/H: Holes in PCB = Ø 3,5mm

Locking torque for B/C/J: 0.17 to 0.20 Nm

AP

H

B/C

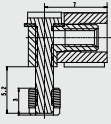
J



FOR ACCESSORIES SEE TECHNICAL INDEX (PAGE 94)



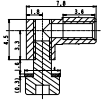
FOR OTHER GUIDES SEE TECHNICAL INDEX (PAGE 96)



**U**

**3.2**

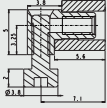
R1,R7  
V1,V3,V5 to V9



**W**

**0.4 to 1.6**

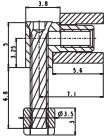
R1,R7  
V1,V3,V5 to V9



**UM**

**1.6 to 3.2**

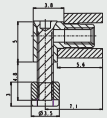
R1,R7  
V1,V3,V5 to V9



**UN**

**4.8 max**

R1,R7  
V1,V3,V5 to V9



**UP**

**2.5**

R1,R7  
V1,V3,V5 to V9

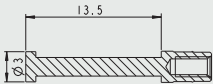
## FOR 220 SERIES MALE CONNECTORS

INVERTED GUIDE STYLES  
STRAIGHT MOUNTING

REFERENCE

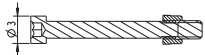
PCB THICKNESS

TERMINAISONS



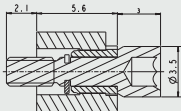
**M**

C1,D1



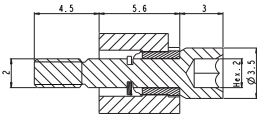
**MR**

C1,D1



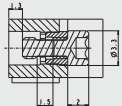
**YN**

C1,D1  
R3,R9  
Y1,Y3,Y5 to Y9



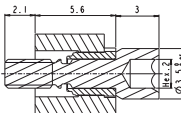
**YP**

C1,D1  
R3,R9  
Y1,Y3,Y5 to Y9



**YR**

C1,D1  
R3,R9  
Y1,Y3,Y5 to Y9



**YS**

C1,D1  
R3,R9  
Y1,Y3,Y5 to Y9

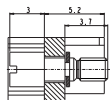
## FOR 220 SERIES FEMALE CONNECTORS

STRAIGHT MOUNTING

REFERENCE

PCB THICKNESS

TERMINAISONS



**A**

C1,D1  
R3,R9  
Y1,Y3,Y5 to Y9