

FEATURES AND SPECIFICATIONS

Features and Benefits

- Sizes 8 to 130 circuits
- With PC slot and guide ears for blind-mate applications
- Polarization slots and guide ears assure error free mating
- Drawn .025" square wire provides 4-sided smooth surface for quality interface

Reference Information

Product Specification: PS-70204
 Packaging: Tray
 UL File No.: E29179 (H)
 CSA File No.: LR19980A
 Mates With: 71973 with flange
 Designed In: Inches

Electrical

Voltage: 250V
 Current: 3.0A
 Contact Resistance: 15mΩ max.
 Dielectric Withstanding Voltage: 1500V
 Insulation Resistance: 1000 MΩ min.

Mechanical

Contact Retention to Housing: 17.79N (4 lb)
 Durability: 25 cycles Tin/Lead and 50 cycles Gold

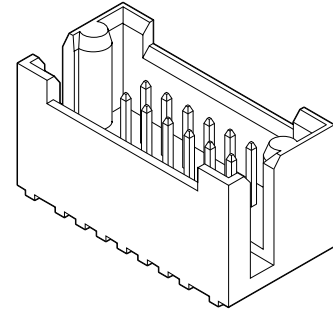
Physical

Housing: Glass-filled nylon, UL 94V-0
 Contact: Phosphor Bronze
 Plating: See Table
 Operating Temperature: -40 to +105°C

molex® 2.54mm (.100") Pitch C-Grid® Shrouded Header

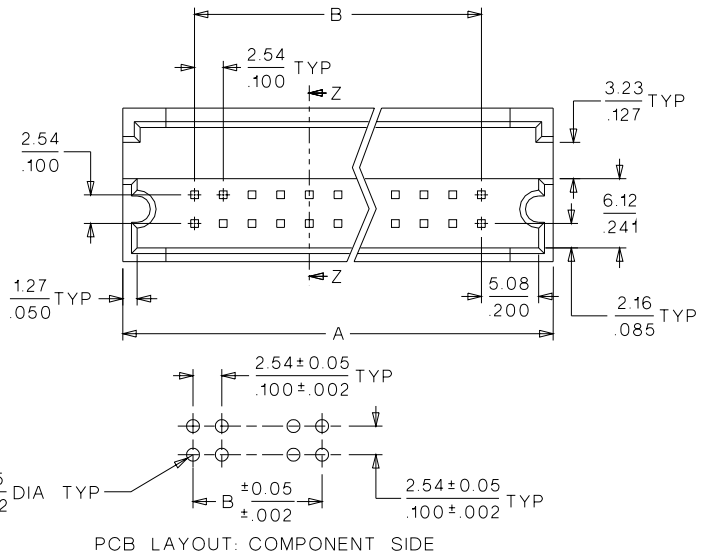
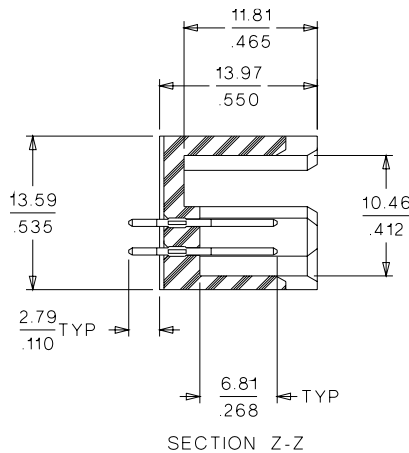
70204

Dual Row With PC Slot and Guide Ears



CATALOG DRAWING (FOR REFERENCE ONLY)

Not For Use With C-Grid III™ Components



ORDERING INFORMATION AND DIMENSIONS

Circuits	Dimension	
	A	B
8	20.32 (.800)	7.62 (.300)
10	22.86 (.900)	10.16 (.400)
12	25.40 (1.000)	12.70 (.500)
14	27.94 (1.100)	15.24 (.600)
16	30.48 (1.200)	17.78 (.700)
18	33.02 (1.300)	20.32 (.800)
20	35.56 (1.400)	22.86 (.900)
22	38.10 (1.500)	25.40 (1.000)
24	40.64 (1.600)	27.94 (1.100)
26	43.18 (1.700)	30.48 (1.200)
28	45.72 (1.800)	33.02 (1.300)
30	48.26 (1.900)	35.56 (1.400)
32	50.80 (2.000)	38.10 (1.500)
34	53.34 (2.100)	40.64 (1.600)
36	55.88 (2.200)	43.18 (1.700)
38	58.42 (2.300)	45.72 (1.800)
40	60.96 (2.400)	48.26 (1.900)

Circuits	Dimension	
	A	B
42	63.50 (2.500)	50.80 (2.000)
44	66.04 (2.600)	53.34 (2.100)
46	68.58 (2.700)	55.88 (2.200)
48	71.12 (2.800)	58.42 (2.300)
50	73.66 (2.900)	60.96 (2.400)
52	76.20 (3.000)	63.50 (2.500)
54	78.74 (3.100)	66.04 (2.600)
56	81.28 (3.200)	68.58 (2.700)
58	83.82 (3.300)	71.12 (2.800)
60	86.36 (3.400)	73.66 (2.900)
62	88.90 (3.500)	76.20 (3.000)
64	91.44 (3.600)	78.74 (3.100)
66	93.98 (3.700)	81.28 (3.200)
68	96.52 (3.800)	83.82 (3.300)
70	99.06 (3.900)	86.36 (3.400)
72	101.60 (4.000)	88.90 (3.500)
74	104.14 (4.100)	91.44 (3.600)

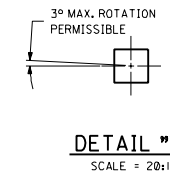
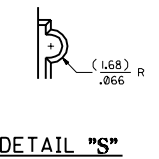
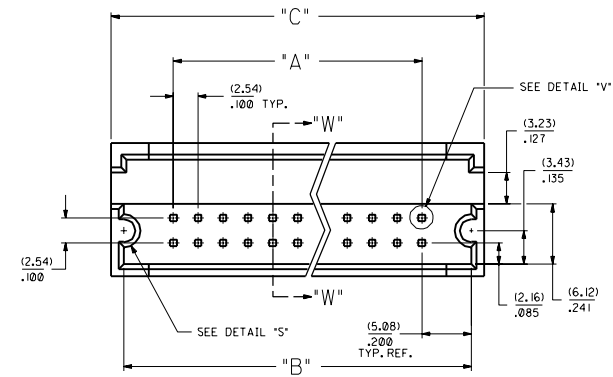
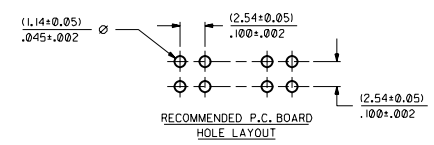
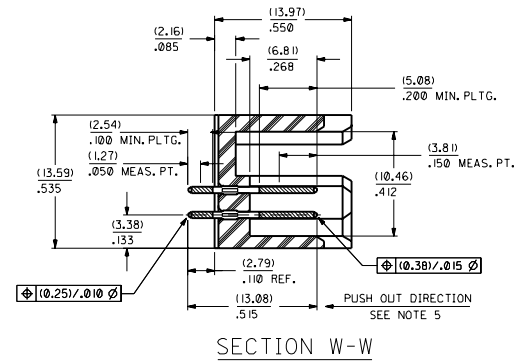
Circuits	Dimension	
	A	B
76	106.68 (4.200)	93.98 (3.700)
78	109.22 (4.300)	96.52 (3.800)
80	111.76 (4.400)	99.06 (3.900)
82	114.30 (4.500)	101.60 (4.000)
84	116.84 (4.600)	104.14 (4.100)
86	119.38 (4.700)	106.68 (4.200)
88	121.92 (4.800)	109.22 (4.300)
90	124.46 (4.900)	111.76 (4.400)
92	127.00 (5.000)	114.30 (4.500)
94	129.54 (5.100)	116.84 (4.600)
96	132.08 (5.200)	119.38 (4.700)
98	134.62 (5.300)	121.92 (4.800)
100	137.16 (5.400)	124.46 (4.900)
102	139.70 (5.500)	127.00 (5.000)
104	142.24 (5.600)	129.54 (5.100)
106	144.78 (5.700)	132.08 (5.200)
108	147.32 (5.800)	134.62 (5.300)

Circuits	Dimension	
	A	B
110	149.86 (5.900)	137.16 (5.400)
112	152.40 (6.000)	139.70 (5.500)
114	154.94 (6.100)	142.24 (5.600)
116	157.48 (6.200)	144.78 (5.700)
118	160.02 (6.300)	147.32 (5.800)
120	162.56 (6.400)	149.86 (5.900)
122	165.10 (6.500)	152.40 (6.000)
124	167.64 (6.600)	154.94 (6.100)
126	170.18 (6.700)	157.48 (6.200)
128	172.72 (6.800)	160.02 (6.300)
130	175.26 (6.900)	162.56 (6.400)

Plating Options	Order No.
15µ" min. select Gold	• 25-02-6XXX
30µ" min. select Gold	• 25-02-1XXX
150µ" Tin/Lead overall	• 25-02-2XXX
Replace XXX with no. of circuits, 008-130 (even only)	

• US Standard Product, available through Molex franchised distributors

CKT. SIZE	PART NUMBER	ENG. NUMBER SDA-70204-	DIM. 'A'		DIM. 'B'		DIM. 'C'	
			MM	IN.	MM	IN.	MM	IN.
	VOIDED	0321						
	VOIDED	0322						
08	25-02-1008	0323	7.62	.300	17.78	.700	20.32	.800
10	25-02-1010	0324	10.16	.400	20.32	.800	22.86	.900
12	25-02-1012	0325	12.70	.500	22.86	.900	25.40	1.000
14	25-02-1014	0326	15.24	.600	25.40	1.000	32.51	1.100
16	25-02-1016	0327	17.78	.700	27.94	1.100	30.48	1.200
18	25-02-1018	0328	20.32	.800	30.48	1.200	33.02	1.300
20	25-02-1020	0329	22.86	.900	33.02	1.300	35.56	1.400
22	25-02-1022	0330	25.40	1.000	35.56	1.400	38.10	1.500
24	25-02-1024	0331	27.94	1.100	38.10	1.500	40.64	1.600
26	25-02-1026	0332	30.48	1.200	40.64	1.600	43.10	1.700
28	25-02-1028	0333	33.02	1.300	43.10	1.700	45.72	1.800
30	25-02-1030	0334	35.56	1.400	45.72	1.800	48.26	1.900
32	25-02-1032	0335	38.10	1.500	48.26	1.900	50.80	2.000
34	25-02-1034	0336	40.64	1.600	50.80	2.000	53.34	2.100
36	25-02-1036	0337	43.10	1.700	53.34	2.100	55.88	2.200
38	25-02-1038	0338	45.72	1.800	55.88	2.200	58.42	2.300
40	25-02-1040	0339	48.26	1.900	58.42	2.300	60.96	2.400
42	25-02-1042	0340	50.80	2.000	60.96	2.400	63.50	2.500
44	25-02-1044	0341	53.34	2.100	63.50	2.500	66.04	2.600
46	25-02-1046	0342	55.88	2.200	66.04	2.600	68.58	2.700
48	25-02-1048	0343	58.42	2.300	68.58	2.700	71.12	2.800
50	25-02-1050	0344	60.96	2.400	71.12	2.800	73.66	2.900
52	25-02-1052	0345	63.50	2.500	73.66	2.900	76.20	3.000
54	25-02-1054	0346	66.04	2.600	76.20	3.000	78.74	3.100
56	25-02-1056	0347	68.58	2.700	78.74	3.100	81.28	3.200
58	25-02-1058	0348	71.12	2.800	81.28	3.200	83.82	3.300
60	25-02-1060	0349	73.66	2.900	83.82	3.300	86.36	3.400
62	25-02-1062	0350	76.20	3.000	86.36	3.400	88.90	3.500
64	25-02-1064	0351	78.74	3.100	88.90	3.500	91.44	3.600
66	25-02-1066	0352	81.28	3.200	91.44	3.600	93.98	3.700
68	25-02-1068	0353	83.82	3.300	93.98	3.700	96.52	3.800
70	25-02-1070	0354	86.36	3.400	96.52	3.800	99.06	3.900
72	25-02-1072	0355	88.90	3.500	99.06	3.900	101.60	4.000
74	25-02-1074	0356	91.44	3.600	101.60	4.000	104.14	4.100
76	25-02-1076	0357	93.98	3.700	104.14	4.100	106.68	4.200
78	25-02-1078	0358	96.52	3.800	106.68	4.200	109.22	4.300
80	25-02-1080	0359	99.06	3.900	109.22	4.300	111.76	4.400
82	25-02-1082	0360	101.60	4.000	111.76	4.400	114.30	4.500
84	25-02-1084	0361	104.14	4.100	114.30	4.500	116.84	4.600
86	25-02-1086	0362	106.68	4.200	116.84	4.600	119.38	4.700
88	25-02-1088	0363	109.22	4.300	119.38	4.700	121.92	4.800
90	25-02-1090	0364	111.76	4.400	121.92	4.800	124.46	4.900
92	25-02-1092	0365	114.30	4.500	124.46	4.900	127.00	5.000
94	25-02-1094	0366	116.84	4.600	127.00	5.000	129.54	5.100
96	25-02-1096	0367	119.38	4.700	129.54	5.100	132.08	5.200
98	25-02-1098	0368	121.92	4.800	132.08	5.200	134.62	5.300
100	25-02-1100	0369	124.46	4.900	134.62	5.300	137.16	5.400
102	25-02-1102	0370	127.00	5.000	137.16	5.400	139.70	5.500
104	25-02-1104	0371	129.54	5.100	139.70	5.500	142.24	5.600
106	25-02-1106	0372	134.62	5.200	142.24	5.600	144.78	5.700
108	25-02-1108	0373	134.62	5.300	144.78	5.700	147.32	5.800
110	25-02-1110	0374	137.16	5.400	147.32	5.800	149.86	5.900
112	25-02-1112	0375	139.70	5.500	149.86	5.900	152.40	6.000
114	25-02-1114	0376	142.24	5.600	152.40	6.000	154.94	6.100
116	25-02-1116	0377	144.78	5.700	154.94	6.100	157.48	6.200
118	25-02-1118	0378	147.32	5.800	157.48	6.200	160.02	6.300
120	25-02-1120	0379	149.86	5.900	160.02	6.300	162.56	6.400
122	25-02-1122	0380	152.40	6.000	162.56	6.400	165.10	6.500
124	25-02-1124	0381	154.94	6.100	165.10	6.500	167.64	6.600
126	25-02-1126	0382	157.48	6.200	167.64	6.600	170.18	6.700
128	25-02-1128	0383	160.02	6.300	170.18	6.700	172.72	6.800
130	25-02-1130	0384	162.56	6.400	172.72	6.800	175.26	6.900



- NOTES:**
- 1) WAFER MATERIAL: GLASS FILLED NYLON COLOR, BLACK.
 - 2) PIN MATERIAL: PHOSPHOR BRONZE ALLOY
 - 3) PIN PLATING:
 - 1) P1, .000030 MIN. GOLD IN SELECTED AREA
 - TAIL, .000075 MIN. TIN/LEAD IN SELECTED AREA
 - OVER .000050 NICKEL OVER-ALL.
 - 4) PINS MUST MEET SOLDERABILITY SPEC. NO. 152.
 - 5) PIN PUSH-OUT FORCE (1.81 KG.) / 4 LBS. MIN.
 - 6) REFER TO P.S. NO. 70204.
 - 7) STANDARD PACKAGING PER: PK-70873-0070.

REV.	DATE	DESCRIPTION
D		CHANGE PLATE DIM. PER ECR US 1286-08/26/92 MDRPH
C		CHANGE PLATE DIM. PER ECR NO US0177 04/10/93 BUS
B		REVISED ADD NOTE E & 7 PER ECR NO. 9689 8/1/87 JAB
A		CHG. PCB HOLE ADD COP PER ECR NO. 2335 8-20-86 JAB
3		REDRAWN PER ECR 22113 4-10-85 JAB

MOLEX INCORPORATED

DUAL ROW HEADER-FULLY SHROUDED
W/P.C.B. SLOTS AND GUIDE EARS
.100 GRID W/(0.64)/.025 SQ. PIN

SEE CHART SDA-70204-0321-0384

SCALE: 4:1

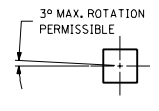
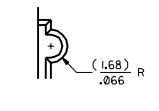
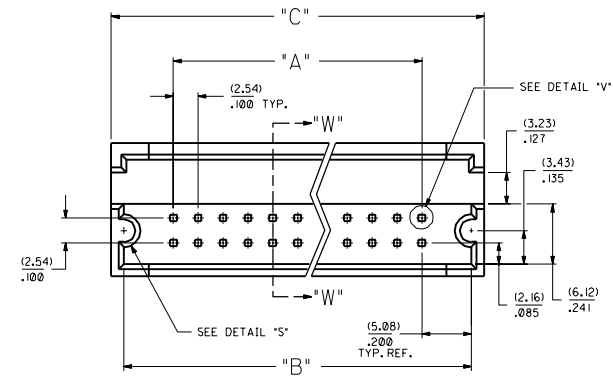
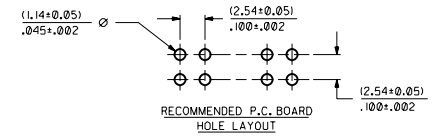
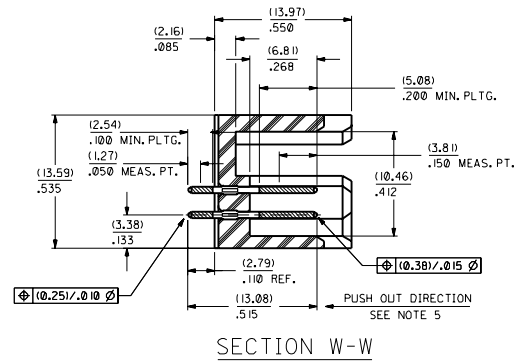
DATE: 5/20/86

DESIGNER: JAS
CHECKER: EIK
DRAWN: WAZ

CKT. SIZE	PART NUMBER	ENG. NUMBER	DIM. 'A'		DIM. 'B'		DIM. 'C'	
			MM	IN.	MM	IN.	MM	IN.
	VOIDED	0385						
	VOIDED	0386						
08	25-02-2008	0387	7.62	.300	17.78	.700	20.32	.800
10	25-02-2010	0388	10.16	.400	20.32	.800	22.86	.900
12	25-02-2012	0389	12.70	.500	22.86	.900	25.40	1.000
14	25-02-2014	0390	15.24	.600	25.40	1.000	32.51	1.100
16	25-02-2016	0391	17.78	.700	27.94	1.100	30.48	1.200
18	25-02-2018	0392	20.32	.800	30.48	1.200	33.02	1.300
20	25-02-2020	0393	22.86	.900	33.02	1.300	35.56	1.400
22	25-02-2022	0394	25.40	1.000	35.56	1.400	38.10	1.500
24	25-02-2024	0395	27.94	1.100	38.10	1.500	40.64	1.600
26	25-02-2026	0396	30.48	1.200	40.64	1.600	43.10	1.700
28	25-02-2028	0397	33.02	1.300	43.10	1.700	45.72	1.800
30	25-02-2030	0398	35.56	1.400	45.72	1.800	48.26	1.900
32	25-02-2032	0399	38.10	1.500	48.26	1.900	50.80	2.000
34	25-02-2034	0400	40.64	1.600	50.80	2.000	53.34	2.100
36	25-02-2036	0401	43.10	1.700	53.34	2.100	55.88	2.200
38	25-02-2038	0402	45.72	1.800	55.88	2.200	58.42	2.300
40	25-02-2040	0403	48.26	1.900	58.42	2.300	60.96	2.400
42	25-02-2042	0404	50.80	2.000	60.96	2.400	63.50	2.500
44	25-02-2044	0405	53.34	2.100	63.50	2.500	66.04	2.600
46	25-02-2046	0406	55.88	2.200	66.04	2.600	68.58	2.700
48	25-02-2048	0407	58.42	2.300	68.58	2.700	71.12	2.800
50	25-02-2050	0408	60.96	2.400	71.12	2.800	73.66	2.900
52	25-02-2052	0409	63.50	2.500	73.66	2.900	76.20	3.000
54	25-02-2054	0410	66.04	2.600	76.20	3.000	78.74	3.100
56	25-02-2056	0411	68.58	2.700	78.74	3.100	81.28	3.200
58	25-02-2058	0412	71.12	2.800	81.28	3.200	83.82	3.300
60	25-02-2060	0413	73.66	2.900	83.82	3.300	86.36	3.400
62	25-02-2062	0414	76.20	3.000	86.36	3.400	88.90	3.500
64	25-02-2064	0415	78.74	3.100	88.90	3.500	91.44	3.600
66	25-02-2066	0416	81.28	3.200	91.44	3.600	93.98	3.700
68	25-02-2068	0417	83.82	3.300	93.98	3.700	96.52	3.800
70	25-02-2070	0418	86.36	3.400	96.52	3.800	99.06	3.900
72	25-02-2072	0419	88.90	3.500	99.06	3.900	101.60	4.000
74	25-02-2074	0420	91.44	3.600	101.60	4.000	104.14	4.100
76	25-02-2076	0421	93.98	3.700	104.14	4.100	106.68	4.200
78	25-02-2078	0422	96.52	3.800	106.68	4.200	109.22	4.300
80	25-02-2080	0423	99.06	3.900	109.22	4.300	111.76	4.400
82	25-02-2082	0424	101.60	4.000	111.76	4.400	114.30	4.500
84	25-02-2084	0425	104.14	4.100	114.30	4.500	116.84	4.600
86	25-02-2086	0426	106.68	4.200	116.84	4.600	119.38	4.700
88	25-02-2088	0427	109.22	4.300	119.38	4.700	121.92	4.800
90	25-02-2090	0428	111.76	4.400	121.92	4.800	124.46	4.900
92	25-02-2092	0429	114.30	4.500	124.46	4.900	127.00	5.000
94	25-02-2094	0430	116.84	4.600	127.00	5.000	129.54	5.100
96	25-02-2096	0431	119.38	4.700	129.54	5.100	132.08	5.200
98	25-02-2098	0432	121.92	4.800	132.08	5.200	134.62	5.300
100	25-02-2100	0433	124.46	4.900	134.62	5.300	137.16	5.400
102	25-02-2102	0434	127.00	5.000	137.16	5.400	139.70	5.500
104	25-02-2104	0435	129.54	5.100	139.70	5.500	142.24	5.600
106	25-02-2106	0436	134.62	5.200	142.24	5.600	144.78	5.700
108	25-02-2108	0437	134.62	5.300	144.78	5.700	147.32	5.800
110	25-02-2110	0438	137.16	5.400	147.32	5.800	149.86	5.900
112	25-02-2112	0439	139.70	5.500	149.86	5.900	152.40	6.000
114	25-02-2114	0440	142.24	5.600	152.40	6.000	154.94	6.100
116	25-02-2116	0441	144.78	5.700	154.94	6.100	157.48	6.200
118	25-02-2118	0442	147.32	5.800	157.48	6.200	160.02	6.300
120	25-02-2120	0443	149.86	5.900	160.02	6.300	162.56	6.400
122	25-02-2122	0444	152.40	6.000	162.56	6.400	165.10	6.500
124	25-02-2124	0445	154.94	6.100	165.10	6.500	167.64	6.600
126	25-02-2126	0446	157.48	6.200	167.64	6.600	170.18	6.700
128	25-02-2128	0447	160.02	6.300	170.18	6.700	172.72	6.800
130	25-02-2130	0448	162.56	6.400	172.72	6.800	175.26	6.900

NOTES

- 1) WAFER MATERIAL: GLASS FILLED NYLON COLOR, BLACK.
- 2) PIN MATERIAL: PHOSPHOR BRONZE ALLOY
- 3) PIN PLATING: (OVERALL) .000150 MIN. TIN/LEAD PLATE OVER .000050 MIN. NICKEL PLATE
- 4) PINS MUST MEET SOLDERABILITY SPEC. NO. 152.
- 5) PIN PUSH-OUT FORCE (1.81 KG) / 4 LBS MIN.
- 6) REFER TO P.S. NO. 70204.
- 7) STANDARD PACKAGING PER: PK-T0873-0070.



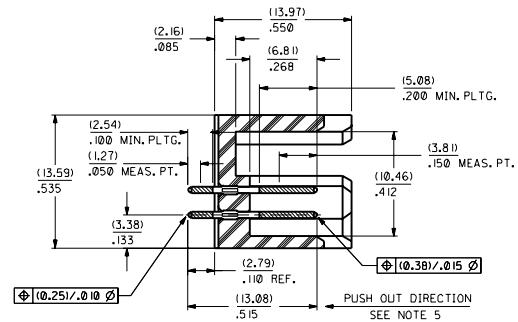
DETAIL "S"

DETAIL "V"
SCALE = 20:1

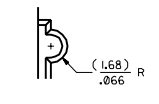
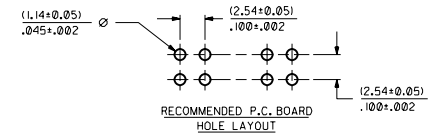
DIMENSIONS SHOWN UNLESS NOTED IN CH		REV. 0		REV. 0		REVISE ONLY ON CAD SYSTEM	
MATERIAL SPECIFICATION		TITLE		DATE		DRAWN	
WAFER		DUAL ROW HEADER-FULLY SHROUDED		5/20/86		EJK	
P.C. BOARD		W/P.C.B. SLOTS AND GUIDE EARS		1		SEE CHART	
PLATING		.100 GRID W/(0.64) ± 0.25 SQ. PIN		1		SDA-70204-0385-0448	
MATERIAL		MOLAX INCORPORATED		MOLAX		DA 10	
SPEC. NO.		JAS		EIK		SEE CHART	
SCALE		4:1		4:1		SEE CHART	
DATE		5/20/86		5/20/86		5/20/86	

E	164 PLTGS WAS 102 PER ECR # 031656 11/25/93
D	CHANGE PLATE DIM. PER ECR # 102396 06/26/92
C	CHANGE PLATE DIM. PER ECR # 098177 04/11/88
B	REVISED PER ECR # 9689 01/28/81
A	ADD EOP NOS. PER ECR # 2353 10/09/85
3	REDRAWN PER ECR # 2215 04/16/85

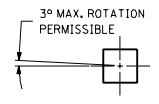
CKT. SIZE	PART NUMBER	ENG. NUMBER	DIM. 'A'		DIM. 'B'		DIM. 'C'	
			MM	IN.	MM	IN.	MM	IN.
	VOIDED	0257						
	VOIDED	0258						
08	25-02-6008	0259	7.62	.300	17.78	.700	20.32	.800
10	25-02-6010	0260	10.16	.400	20.32	.800	22.86	.900
12	25-02-6012	0261	12.70	.500	22.86	.900	25.40	1.000
14	25-02-6014	0262	15.24	.600	25.40	1.000	32.51	1.100
16	25-02-6016	0263	17.78	.700	27.94	1.100	30.48	1.200
18	25-02-6018	0264	20.32	.800	30.48	1.200	33.02	1.300
20	25-02-6020	0265	22.86	.900	33.02	1.300	35.56	1.400
22	25-02-6022	0266	25.40	1.000	35.56	1.400	38.10	1.500
24	25-02-6024	0267	27.94	1.100	38.10	1.500	40.64	1.600
26	25-02-6026	0268	30.48	1.200	40.64	1.600	43.10	1.700
28	25-02-6028	0269	33.02	1.300	43.10	1.700	45.72	1.800
30	25-02-6030	0270	35.56	1.400	45.72	1.800	48.26	1.900
32	25-02-6032	0271	38.10	1.500	48.26	1.900	50.80	2.000
34	25-02-6034	0272	40.64	1.600	50.80	2.000	53.34	2.100
36	25-02-6036	0273	43.10	1.700	53.34	2.100	55.88	2.200
38	25-02-6038	0274	45.72	1.800	55.88	2.200	58.42	2.300
40	25-02-6040	0275	48.26	1.900	58.42	2.300	60.96	2.400
42	25-02-6042	0276	50.80	2.000	60.96	2.400	63.50	2.500
44	25-02-6044	0277	53.34	2.100	63.50	2.500	66.04	2.600
46	25-02-6046	0278	55.88	2.200	66.04	2.600	68.58	2.700
48	25-02-6048	0279	58.42	2.300	68.58	2.700	71.12	2.800
50	25-02-6050	0280	60.96	2.400	71.12	2.800	73.66	2.900
52	25-02-6052	0281	63.50	2.500	73.66	2.900	76.20	3.000
54	25-02-6054	0282	66.04	2.600	76.20	3.000	78.74	3.100
56	25-02-6056	0283	68.58	2.700	78.74	3.100	81.28	3.200
58	25-02-6058	0284	71.12	2.800	81.28	3.200	83.82	3.300
60	25-02-6060	0285	73.66	2.900	83.82	3.300	86.36	3.400
62	25-02-6062	0286	76.20	3.000	86.36	3.400	88.90	3.500
64	25-02-6064	0287	78.74	3.100	88.90	3.500	91.44	3.600
66	25-02-6066	0288	81.28	3.200	91.44	3.600	93.98	3.700
68	25-02-6068	0289	83.82	3.300	93.98	3.700	96.52	3.800
70	25-02-6070	0290	86.36	3.400	96.52	3.800	99.06	3.900
72	25-02-6072	0291	88.90	3.500	99.06	3.900	101.60	4.000
74	25-02-6074	0292	91.44	3.600	101.60	4.000	104.14	4.100
76	25-02-6076	0293	93.98	3.700	104.14	4.100	106.68	4.200
78	25-02-6078	0294	96.52	3.800	106.68	4.200	109.22	4.300
80	25-02-6080	0295	99.06	3.900	109.22	4.300	111.76	4.400
82	25-02-6082	0296	101.60	4.000	111.76	4.400	114.30	4.500
84	25-02-6084	0297	104.14	4.100	114.30	4.500	116.84	4.600
86	25-02-6086	0298	106.68	4.200	116.84	4.600	119.38	4.700
88	25-02-6088	0299	109.22	4.300	119.38	4.700	121.92	4.800
90	25-02-6090	0300	111.76	4.400	121.92	4.800	124.46	4.900
92	25-02-6092	0301	114.30	4.500	124.46	4.900	127.00	5.000
94	25-02-6094	0302	116.84	4.600	127.00	5.000	129.54	5.100
96	25-02-6096	0303	119.38	4.700	129.54	5.100	132.08	5.200
98	25-02-6098	0304	121.92	4.800	132.08	5.200	134.62	5.300
100	25-02-6100	0305	124.46	4.900	134.62	5.300	137.16	5.400
102	25-02-6102	0306	127.00	5.000	137.16	5.400	139.70	5.500
104	25-02-6104	0307	129.54	5.100	139.70	5.500	142.24	5.600
106	25-02-6106	0308	134.62	5.200	142.24	5.600	144.78	5.700
108	25-02-6108	0309	134.62	5.200	144.78	5.700	147.32	5.800
110	25-02-6110	0310	137.16	5.300	147.32	5.800	149.86	5.900
112	25-02-6112	0311	139.70	5.500	149.86	5.900	152.40	6.000
114	25-02-6114	0312	142.24	5.600	152.40	6.000	154.94	6.100
116	25-02-6116	0313	144.78	5.700	154.94	6.100	157.48	6.200
118	25-02-6118	0314	147.32	5.800	157.48	6.200	160.02	6.300
120	25-02-6120	0315	149.86	5.900	160.02	6.300	162.56	6.400
122	25-02-6122	0316	152.40	6.000	162.56	6.400	165.10	6.500
124	25-02-6124	0317	154.94	6.100	165.10	6.500	167.64	6.600
126	25-02-6126	0318	157.48	6.200	167.64	6.600	170.18	6.700
128	25-02-6128	0319	160.02	6.300	170.18	6.700	172.72	6.800
130	25-02-6130	0320	162.56	6.400	172.72	6.800	175.26	6.900



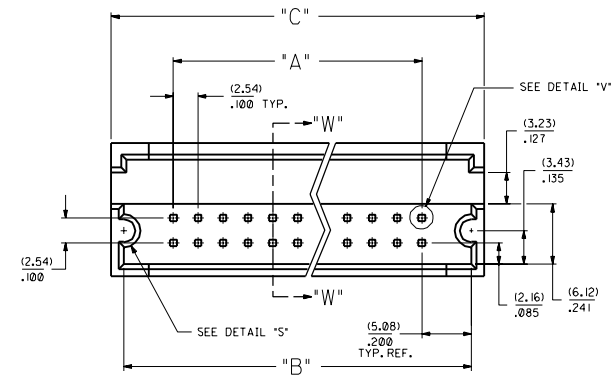
SECTION W-W



DETAIL "S"



DETAIL "V"
SCALE = 20:1



- NOTES:**
- 1) WAFER MATERIAL: GLASS FILLED NYLON COLOR, BLACK.
 - 2) PIN MATERIAL: PHOSPHOR BRONZE ALLOY
 - 3) PIN PLATING:
 - 1) P1, .00005 MIN. GOLD IN SELECTED AREA
 - TAIL: .000075 MIN. TIN/LEAD IN SELECTED AREA OVER .000050 NICKEL OVER-ALL.
 - 4) PINS MUST MEET SOLDERABILITY SPEC. NO. 152.
 - 5) PIN PUSH-OUT FORCE (1.81 KG.)/4 LBS MIN.
 - 6) REFER TO P.S. NO. 70204.
 - 7) STANDARD PACKAGING PER: PK-70873-0070.

MFG. SH. REV. LTR.		REVISIONS	
1	5/20/86		
DIMENSIONS SHOWN UNLESS NOTED INCH SHELL CHARACTERISTICS SPECIFIED BY MANUFACTURER'S PART NUMBER			
TITLE		REVISE ONLY ON CAD SYSTEM	
DUAL ROW HEADER-FULLY SHROUDED W/P.C.B. SLOTS AND GUIDE EARS .100 GRID W/(0.64)±0.025 SQ. PIN			
MOLEX INCORPORATED		SHEET NO. 1	
SEE CHART		SDA-70204-0257-0320	
SPEC. JAS		EIK	
DRAFT WAZ		SCALE 4:1	

D	CHANGE PLATE DIM. PER ECR. USE 0286 Q8/26/92 MGR/PHY
C	CHANGE PLATE DIM. PER ECR. NO. 0807/04/10/89 BUS
B	REVISED, ADD NOTE E & 7 PER ECR. NO. 9689 8/1/87 JAB
A	REVISE, ADD EDP. NO.'S PER ECR. NO. 2355 4-30-86 JAB
3	REDRAWN PER ECR. 2213 4-10-85 JAB