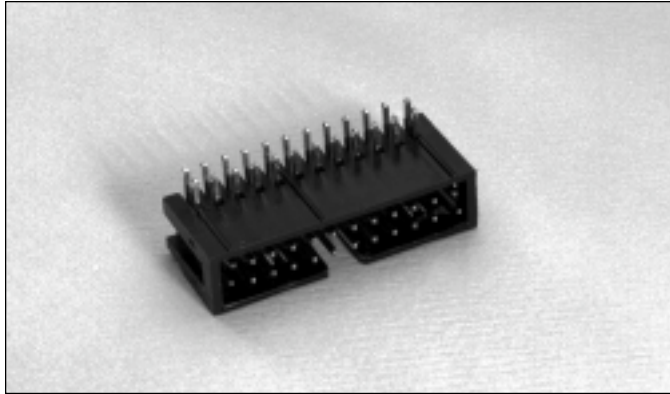


.100" (2.54mm) Dual Row, Through Hole, Right Angle, Polarizing Shrouded Header



9100 SERIES ("POST/BOXE")

PART NUMBER LEGEND

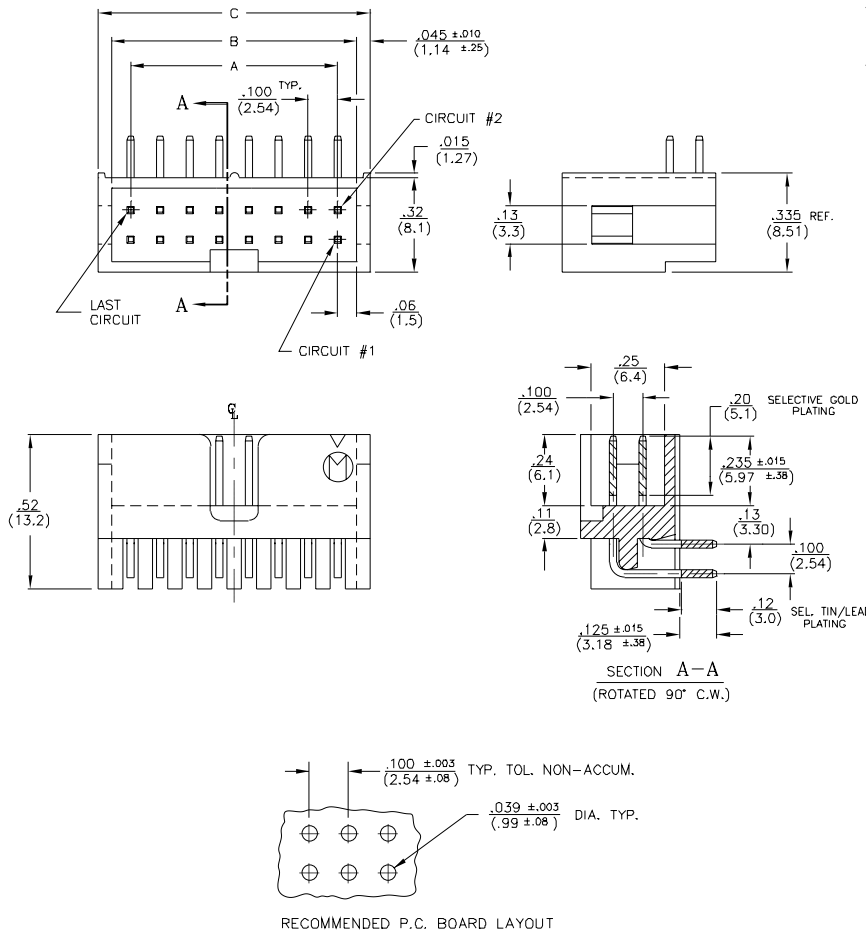
91XX-41-2XX-01

- NUMBER OF POSITIONS
(SEE TABLE)
- PIN PLATING
(SEE NOTE 3)
- INSULATOR MATERIAL
(SEE NOTE 2)

MATING CONNECTORS: 9000 SERIES & 9300-6XX/7XX SERIES

NOTES:

1. ALL DIMENSIONS ARE IN IN./ (MM.)
2. INSULATOR MATERIAL : 9100-40-2XX-01; POLYESTER (PBT), 30% GLASS FILLED, UL94V-0
9110-40-2XX-01; POLYESTER (PCT), 30% GLASS FILLED, UL94V-0
3. PIN MATERIAL : PHOSPHOR BRONZE.
4. PIN FINISH :
9100 - TIN/LEAD OVER NICKEL PLATE.
9108 - .000050 NICKEL PLATE ALL OVER;
.000030 SELECTIVE GOLD IN MATING AREA, .0001-.0002 SEL. TIN/LEAD ON SOLDER TAIL.
910F - .000050 NICKEL PLATE ALL OVER;
.000015 SELECTIVE GOLD IN MATING AREA, .0001-.0002 SEL. TIN/LEAD ON SOLDER TAIL.



PART NO.	No. OF CIRCUITS	A ±.005 (±.13)	B ±.010 (±.25)	C ±.010 (±.25)
910X-41-202-01	4	.420 (10.67)	.420 (10.67)	.410 (10.41)
-203-	6	.420 (10.67)	.420 (10.67)	.410 (10.41)
-204-	8	.420 (10.67)	.420 (10.67)	.410 (10.41)
-205-	10	.420 (10.67)	.420 (10.67)	.410 (10.41)
-206-	12	.420 (10.67)	.420 (10.67)	.410 (10.41)
-207-	14	.420 (10.67)	.420 (10.67)	.410 (10.41)
-208-	16	.420 (10.67)	.420 (10.67)	.410 (10.41)
-209-	18	.420 (10.67)	.420 (10.67)	.410 (10.41)
-210-	20	.420 (10.67)	.420 (10.67)	.410 (10.41)
-211-	22	.420 (10.67)	.420 (10.67)	.410 (10.41)
-212-	24	.420 (10.67)	.420 (10.67)	.410 (10.41)
-213-	26	.420 (10.67)	.420 (10.67)	.410 (10.41)
-214-	28	.420 (10.67)	.420 (10.67)	.410 (10.41)
-215-	30	.420 (10.67)	.420 (10.67)	.410 (10.41)
-216-	32	.420 (10.67)	.420 (10.67)	.410 (10.41)
-217-	34	.420 (10.67)	.420 (10.67)	.410 (10.41)
-218-	36	.420 (10.67)	.420 (10.67)	.410 (10.41)
-219-	38	.420 (10.67)	.420 (10.67)	.410 (10.41)
-220-	40	.420 (10.67)	.420 (10.67)	.410 (10.41)
-221-	42	.420 (10.67)	.420 (10.67)	.410 (10.41)
-222-	44	.420 (10.67)	.420 (10.67)	.410 (10.41)
-223-	46	.420 (10.67)	.420 (10.67)	.410 (10.41)
-224-	48	.420 (10.67)	.420 (10.67)	.410 (10.41)
-225-	50	.420 (10.67)	.420 (10.67)	.410 (10.41)
-226-	52	.420 (10.67)	.420 (10.67)	.410 (10.41)
-227-	54	.420 (10.67)	.420 (10.67)	.410 (10.41)
-228-	56	.420 (10.67)	.420 (10.67)	.410 (10.41)
-229-	58	.420 (10.67)	.420 (10.67)	.410 (10.41)
-230-	60	.420 (10.67)	.420 (10.67)	.410 (10.41)
-231-	62	.420 (10.67)	.420 (10.67)	.410 (10.41)
-232-	64	.420 (10.67)	.420 (10.67)	.410 (10.41)
-233-	66	.420 (10.67)	.420 (10.67)	.410 (10.41)
-234-	68	.420 (10.67)	.420 (10.67)	.410 (10.41)
-235-	70	.420 (10.67)	.420 (10.67)	.410 (10.41)
-236-	72	.420 (10.67)	.420 (10.67)	.410 (10.41)
-237-	74	.420 (10.67)	.420 (10.67)	.410 (10.41)
-238-	76	.420 (10.67)	.420 (10.67)	.410 (10.41)
-239-	78	.420 (10.67)	.420 (10.67)	.410 (10.41)
910X-41-240-01	80	.420 (10.67)	.420 (10.67)	.410 (10.41)