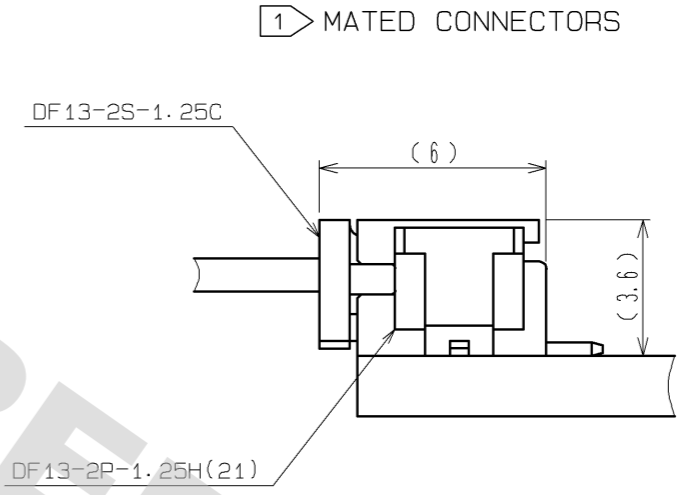
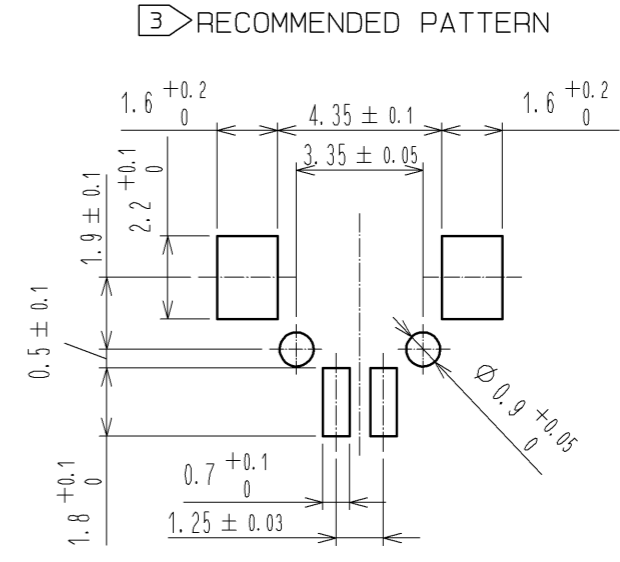
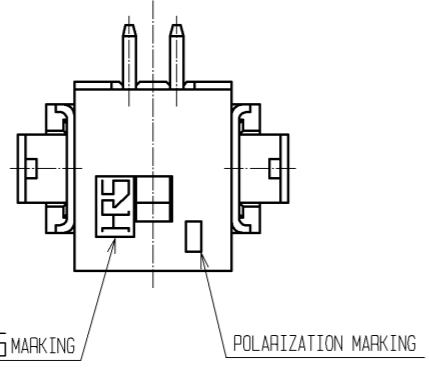
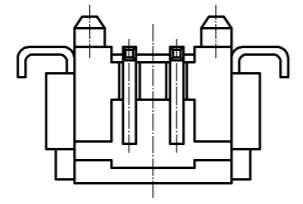
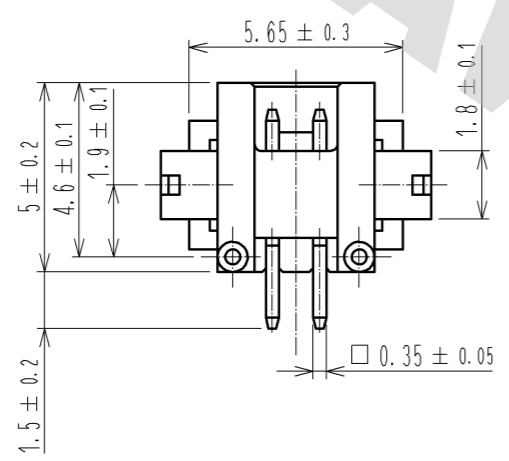
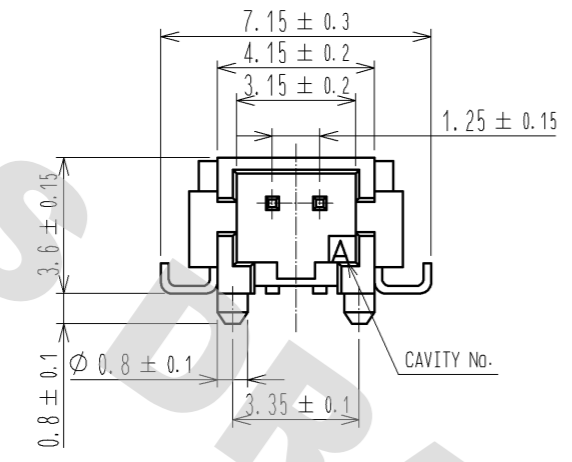


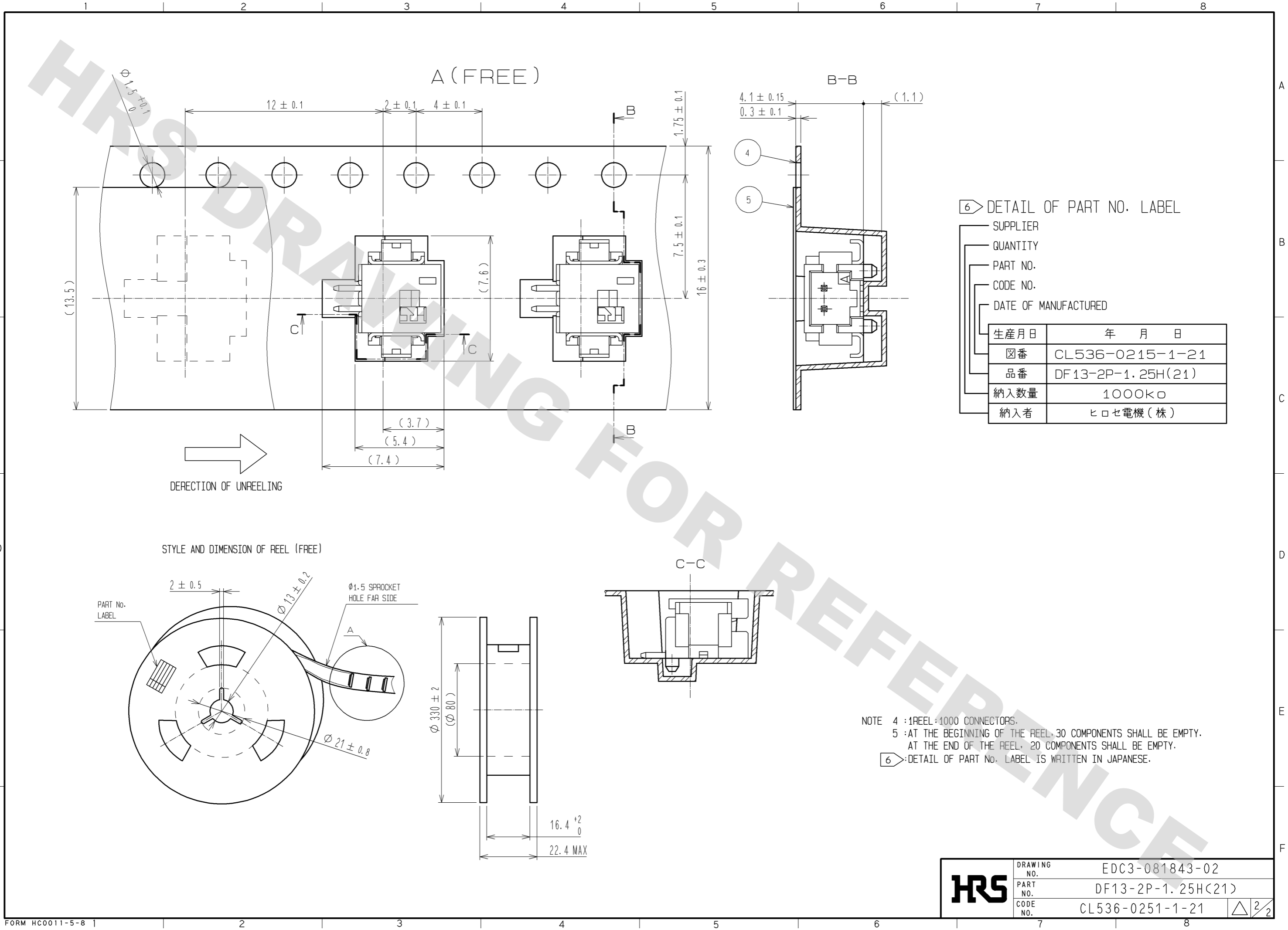
DRAWING FOR REFERENCE: This is subject to change without notice  
08/11/2012



NOTE ①: WHEN THIS CONNECTOR MATES WITH DF13-2S-1.25C THE MATING HEIGHT IS 3.6 mm.  
②: FLATNESS OF LEAD WITH REINFORCED METAL FITTINGS SHALL BE WITHIN 0.1mm.  
③: RECOMMENDED THICKNESS OF CREAM SOLDER PASTE: 0.15mm ~ 0.2mm  
OPEN AREA RATIO: 100%

2	BRASS	SURFACE PLATING: TIN PLATED 1μm min UNDER PLATING: COPPER PLATED 0.5μm min	5	POLYESTER	COVER TAPE: CLEAR
1	POLYAMIDE	BEIGE (NATURAL), UL94V-0	4	PS	EMBOSSED CARRIER TAPE: CLEAR
			3	PHOSPHOR BRONZE	SURFACE PLATING: TIN PLATED 1μm min
NO.	MATERIAL	FINISH, REMARKS	NO.	MATERIAL	FINISH, REMARKS
UNITS	mm	SCALE	5 : 1	COUNT	△
DESCRIPTION OF REVISIONS		DESIGNED	CHECKED	DATE	
APPROVED : TS. SAKATA		08.08.28	DRAWING NO.		EDC3-081843-02
CHECKED : TS. KUMAZAWA		08.08.27	PART NO.		DF13-2P-1.25H(21)
DESIGNED : SN. KOBAYASHI		08.08.01	CODE NO.		CL536-0251-1-21
DRAWN : SN. KOBAYASHI		08.08.01			△ 1/2

DRAWING FOR REFERENCE: This is subject to change without notice  
08/11/2012



6: DETAIL OF PART NO. LABEL

SUPPLIER	
QUANTITY	
PART NO.	
CODE NO.	
DATE OF MANUFACTURED	
生産月日	年 月 日
図番	CL536-0215-1-21
品番	DF13-2P-1.25H(21)
納入数量	1000k
納入者	ヒロセ電機(株)

NOTE 4 : REEL : 1000 CONNECTORS.  
 5 : AT THE BEGINNING OF THE REEL, 30 COMPONENTS SHALL BE EMPTY.  
 AT THE END OF THE REEL, 20 COMPONENTS SHALL BE EMPTY.  
 6 : DETAIL OF PART NO. LABEL IS WRITTEN IN JAPANESE.

<b>HRS</b>	DRAWING NO.	EDC3-081843-02
	PART NO.	DF13-2P-1.25H(21)
	CODE NO.	CL536-0251-1-21
		△ 2/2