

FLEXPAC® LOCKING HEADER, SINGLE ROW STRAIGHT CONTACTS 2MM (.079") CENTER SPACING



PHYSICAL PROPERTIES

INSULATION MATERIAL: Glass reinforced thermoplastic rated 94V-0
 COLOR: Black
 CONTACT MATERIAL: Copper alloy
 CONTACT PLATING: .000150 tin/lead alloy over .000050 nickel all over

ELECTRICAL PROPERTIES

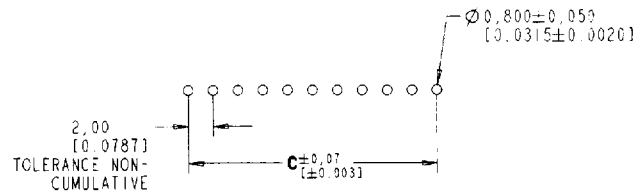
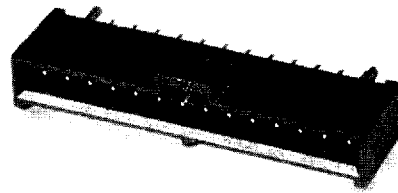
CURRENT RATING: 2.5 amps
 INSULATION RESISTANCE: >1 x 10⁹ Ohms @ 500 VDC
 DWV: >500 VRMS at sea level

ENVIRONMENTAL PROPERTIES

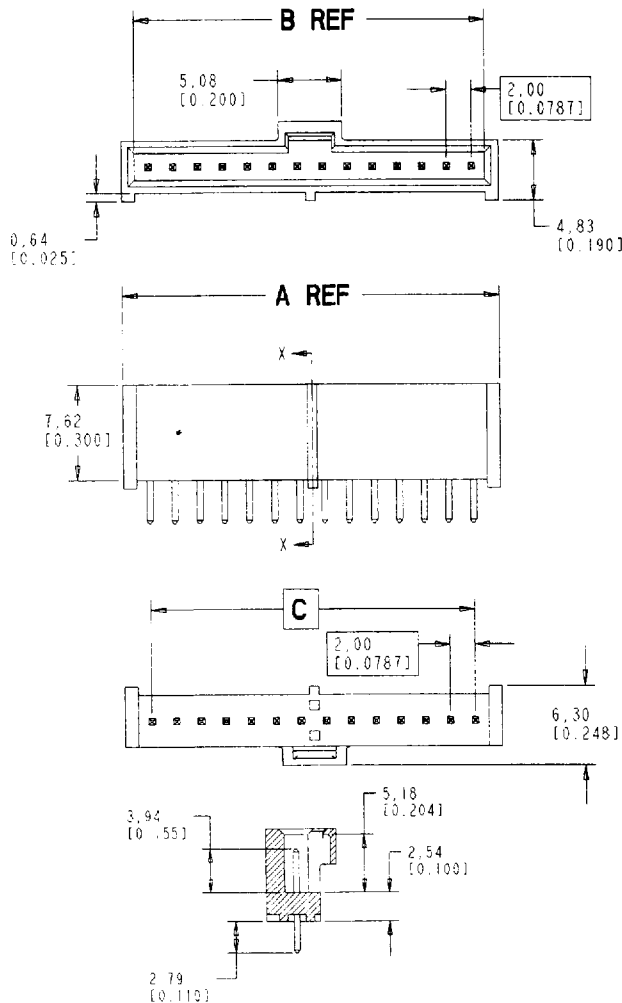
TEMPERATURE RATING:
 Processing: 2 min. @ 250° C max.
 Operating: -55° to 105° C

MATING CONNECTOR

See page 153



RECOMMENDED PC BOARD LAYOUT



Ordering Information

GOLD CONTACT PLATING	TIN CONTACT PLATING	NO. OF POS.	A	B	C
F2H-04SSG	F2H-04SST	4	10.31 (.406)	8.19 (.322)	6.00 (.236)
F2H-05SSG	F2H-05SST	5	12.32 (.485)	10.19 (.401)	8.00 (.315)
F2H-06SSG	F2H-06SST	6	14.33 (.564)	12.19 (.480)	10.00 (.394)
F2H-07SSG	F2H-07SST	7	16.31 (.642)	14.19 (.558)	12.00 (.472)
F2H-08SSG	F2H-08SST	8	18.31 (.721)	16.19 (.637)	14.00 (.551)
F2H-09SSG	F2H-09SST	9	20.32 (.800)	18.19 (.716)	16.00 (.630)
F2H-10SSG	F2H-10SST	10	22.30 (.878)	20.19 (.795)	18.00 (.709)
F2H-11SSG	F2H-11SST	11	24.30 (.957)	22.19 (.873)	20.00 (.787)
F2H-12SSG	F2H-12SST	12	26.31 (1.036)	24.19 (.952)	22.00 (.866)
F2H-13SSG	F2H-13SST	13	28.32 (1.115)	26.19 (1.031)	24.00 (.945)
F2H-14SSG	F2H-14SST	14	30.33 (1.194)	28.19 (1.110)	26.00 (1.024)
F2H-15SSG	F2H-15SST	15	32.33 (1.273)	30.19 (1.189)	28.00 (1.102)
F2H-16SSG	F2H-16SST	16	34.34 (1.352)	32.19 (1.268)	30.00 (1.181)
F2H-17SSG	F2H-17SST	17	36.32 (1.430)	34.19 (1.346)	32.00 (1.260)
F2H-18SSG	F2H-18SST	18	38.33 (1.509)	36.19 (1.425)	34.00 (1.339)
F2H-19SSG	F2H-19SST	19	40.34 (1.588)	38.19 (1.504)	36.00 (1.417)
F2H-20SSG	F2H-20SST	20	42.32 (1.666)	40.19 (1.582)	38.00 (1.496)
F2H-21SSG	F2H-21SST	21	44.32 (1.745)	42.19 (1.661)	40.00 (1.575)
F2H-22SSG	F2H-22SST	22	46.33 (1.824)	44.19 (1.740)	42.00 (1.654)
F2H-23SSG	F2H-23SST	23	48.31 (1.902)	46.19 (1.818)	44.00 (1.732)
F2H-24SSG	F2H-24SST	24	50.32 (1.981)	48.19 (1.897)	46.00 (1.811)
F2H-25SSG	F2H-25SST	25	52.30 (2.059)	50.19 (1.975)	48.00 (1.890)
F2H-26SSG	F2H-26SST	26	54.33 (2.139)	52.19 (2.055)	50.00 (1.969)
F2H-27SSG	F2H-27SST	27	56.31 (2.217)	54.19 (2.133)	52.00 (2.047)
F2H-28SSG	F2H-28SST	28	58.32 (2.296)	56.19 (2.212)	54.00 (2.126)
F2H-29SSG	F2H-29SST	29	60.33 (2.375)	58.19 (2.291)	56.00 (2.205)
F2H-30SSG	F2H-30SST	30	62.31 (2.453)	60.19 (2.369)	58.00 (2.283)
F2H-31SSG	F2H-31SST	31	64.31 (2.532)	62.19 (2.448)	60.00 (2.362)
F2H-32SSG	F2H-32SST	32	66.32 (2.611)	64.19 (2.527)	62.00 (2.441)