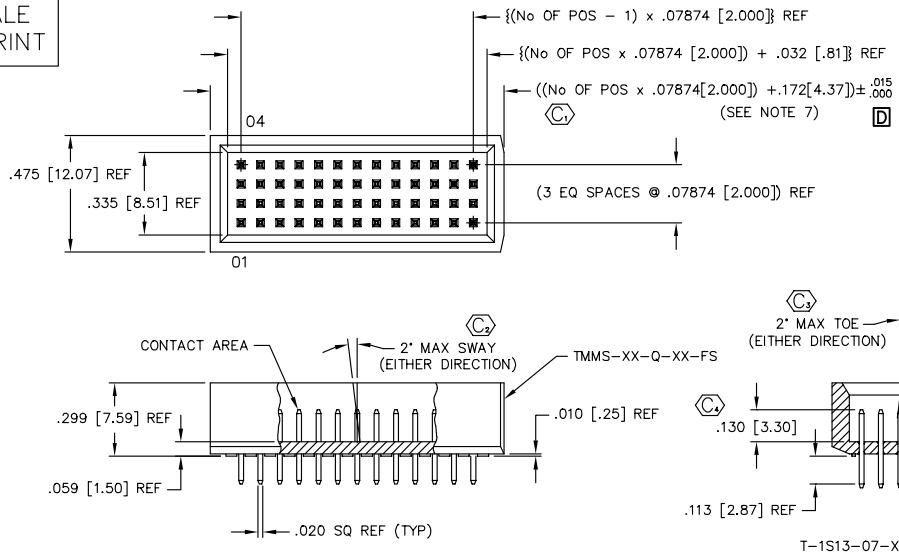


FIG. 1

DIMENSIONS ARE IN INCHES		UNLESS OTHERWISE NOTED		TOLERANCES ARE:		TITLE: 2mm QUAD ROW FULL SHROUD TERMINAL ASM		DWG NO: TMMS-1XX-XX-Q-XX-FS	
ONE PLACE DECIMALS ±.1	TWO PLACE DECIMALS ±.01	THREE PLACE DECIMALS ± .005	FOUR PLACE DECIMALS ± .002	ANGLES ± 5°				SHEET 1 OF 2	

DO NOT SCALE FROM THIS PRINT



TMMS-1XX-XX-Q-XX-FS

No OF POSITIONS
-05 THRU -50

LEAD STYLE
-01: .130 [3.30] POST

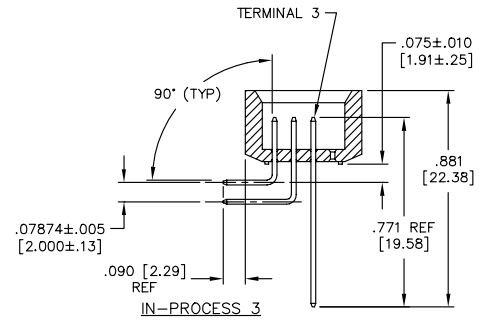
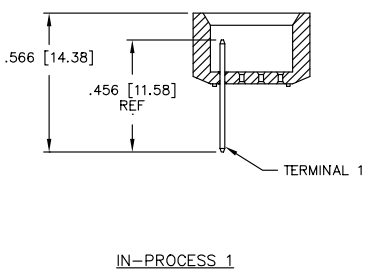
PLATING
-G: GOLD
-S: SELECTIVE GOLD
-L: SELECTIVE LIGHT GOLD
-F: FLASH SELECTIVE GOLD
-FM: FLASH SELECTIVE GOLD/MATTE TIN TAIL
-LM: LIGHT SELECTIVE GOLD/MATTE TIN TAIL
-SM: SELECTIVE GOLD/MATTE TIN TAIL

OPTIONS
-FS: FULL SHROUD (USE TMMS-XX-Q-XX-FS)

OPTION
-RA: RIGHT ANGLE (SEE FIG. 2) (LEAVE BLANK FOR THRU HOLE VERSION)
* -BL: MOLDED BOARD LOCKS (AVAILABLE WITH -RA ONLY) [USE TMMS-XX-Q-XX-BL-FS] (SEE FIG. 3, SHT 2)
* -A: MOLDED ALIGNMENT PIN (AVAILABLE WITH -RA ONLY) [USE TMMS-XX-Q-XX-A-FS] (SEE FIG. 4, SHT 2)

ROW SPECIFICATION
-Q: QUAD ROW (SEE FIG. 1)
(USE TMMS-XX-Q-XX-FS) * = NOT RELEASED FOR PRODUCTION

- NOTES:
- 1.) MAX. ALLOWABLE BOW: .005 IN/IN AFTER ASSEMBLY.
 - 2.) MAX. PIN ROTATION IN BODY: 2°
 - 3.) PUSHOUT FORCE SHALL BE 1 lb MIN.
 - 4.) (C) REPRESENTS A CRITICAL DIMENSION.
 - 5.) ALL DIMENSIONS IN BRACKETS [] TO BE MILLIMETERS.
 - 6.) ALL DIMENSIONS TO BE SYMMETRICAL ABOUT C.L. WITHIN A VARIANCE OF .002 [0.051] UNLESS OTHERWISE NOTED.
 - 7.) .010 [0.25] MAX CUT FLASH (BRUSH CLEAN AS NECESSARY).



TERMINAL 1	TERMINAL 2	TERMINAL 3	TERMINAL 4
T-1S13-13-XX-2	T-1S13-14-XX-2	T-1S13-23-XX-2	T-1S13-24-XX-2

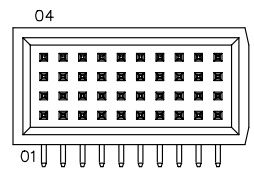
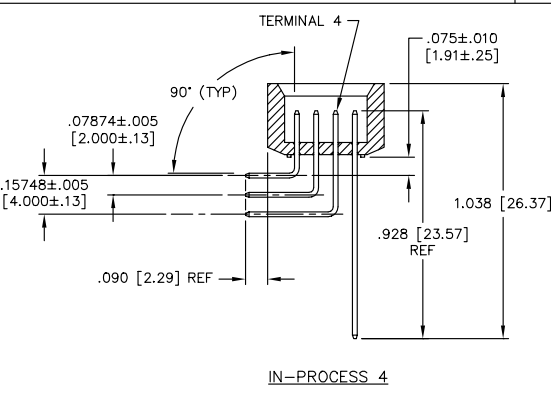
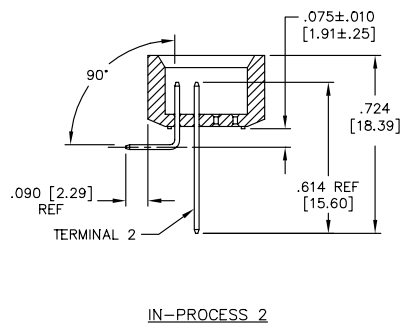
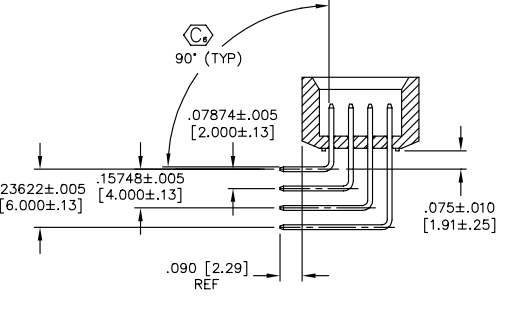
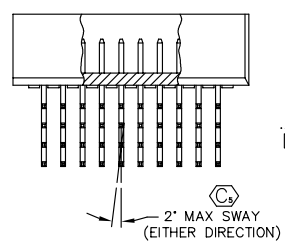


FIG. 2
-RA: RIGHT ANGLE OPTION (DIFFERENT AS SHOWN, OTHERWISE SAME AS FIG. 1)



PROPRIETARY NOTE
THIS DOCUMENT CONTAINS INFORMATION CONFIDENTIAL AND PROPRIETARY TO SAMTEC INC. AND SHALL NOT BE REPRODUCED OR TRANSFERRED TO OTHER DOCUMENTS OR DISCLOSED TO OTHERS OR USED FOR ANY PURPOSE OTHER THAN THAT FOR WHICH IT WAS OBTAINED WITHOUT THE EXPRESSED WRITTEN CONSENT OF SAMTEC INC.

MATERIAL:
INSULATOR: LCP VECTRA E130, UL RATED 94V-0
COLOR: BLACK
TERMINAL: SPRING TEMPER PHOS BRONZE



520 PARK EAST BLVD. NEW ALBANY, INDIANA 47150
PHONE (812) 944-6733 P.O. BOX 1147
CODE 55322

MADE BY:
CHAD F 12/17/2002

DIMENSIONS ARE IN INCHES		UNLESS OTHERWISE NOTED		TOLERANCES ARE:	
ONE PLACE DECIMALS ±.1	THREE PLACE DECIMALS ± .005	ANGLES	± 5°		
TWO PLACE DECIMALS ±.01	FOUR PLACE DECIMALS ± .002				

TITLE: 2mm QUAD ROW FULL SHROUD TERMINAL ASM
 DWG NO: TMMS-1XX-XX-XX-Q-XX-FS
 SHEET 2 OF 2

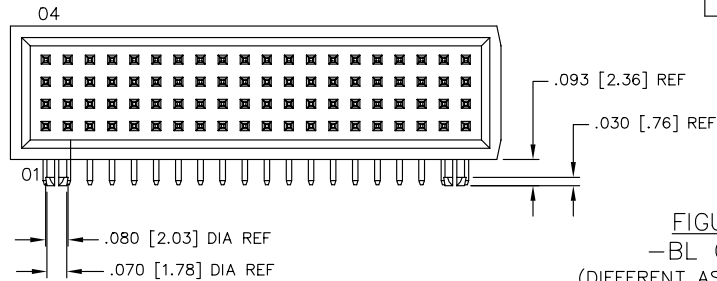
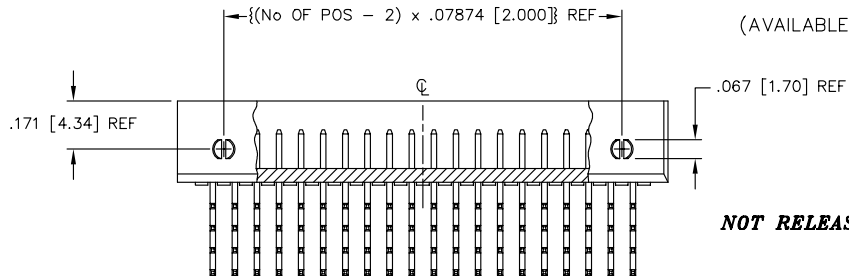


FIGURE 3
 -BL OPTION
 (DIFFERENT AS SHOWN, OTHERWISE SAME AS FIG. 1)
 (AVAILABLE ONLY WITH -RA OPTION)



NOT RELEASED FOR PRODUCTION

PACKAGING TABLE		
OPTIONS	TUBE	PLUG
NONE (-TH)	PT-1-24-01-08	TP-13
-RA	PT-1-24-01-91	TP-28

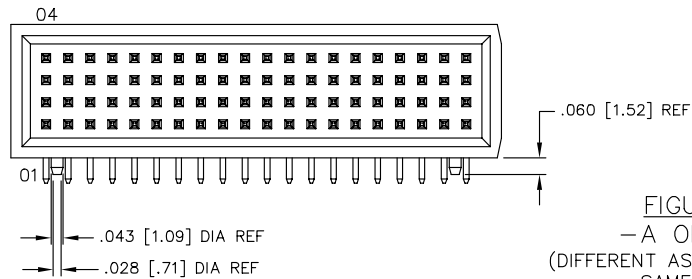
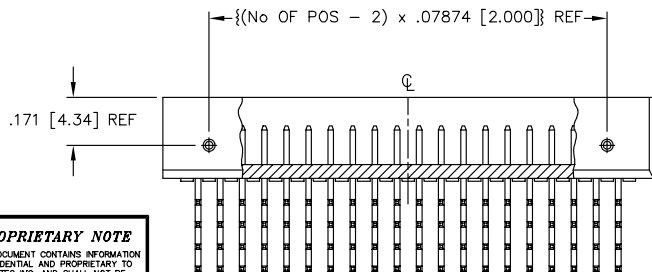


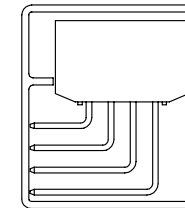
FIGURE 4
 -A OPTION
 (DIFFERENT AS SHOWN, OTHERWISE SAME AS FIG. 1)
 (AVAILABLE ONLY WITH -RA OPTION)



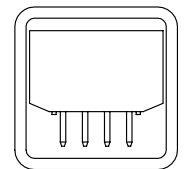
NOT RELEASED FOR PRODUCTION

PROPRIETARY NOTE
 THIS DOCUMENT CONTAINS INFORMATION CONFIDENTIAL AND PROPRIETARY TO SAMTEC INC. AND SHALL NOT BE REPRODUCED OR TRANSFERRED TO OTHER DOCUMENTS OR DISCLOSED TO OTHERS OR USED FOR ANY PURPOSE OTHER THAN THAT FOR WHICH IT WAS OBTAINED WITHOUT THE EXPRESSED WRITTEN CONSENT OF SAMTEC INC.

PACKAGING VIEWS



PT-1-24-01-91



PT-1-24-01-08

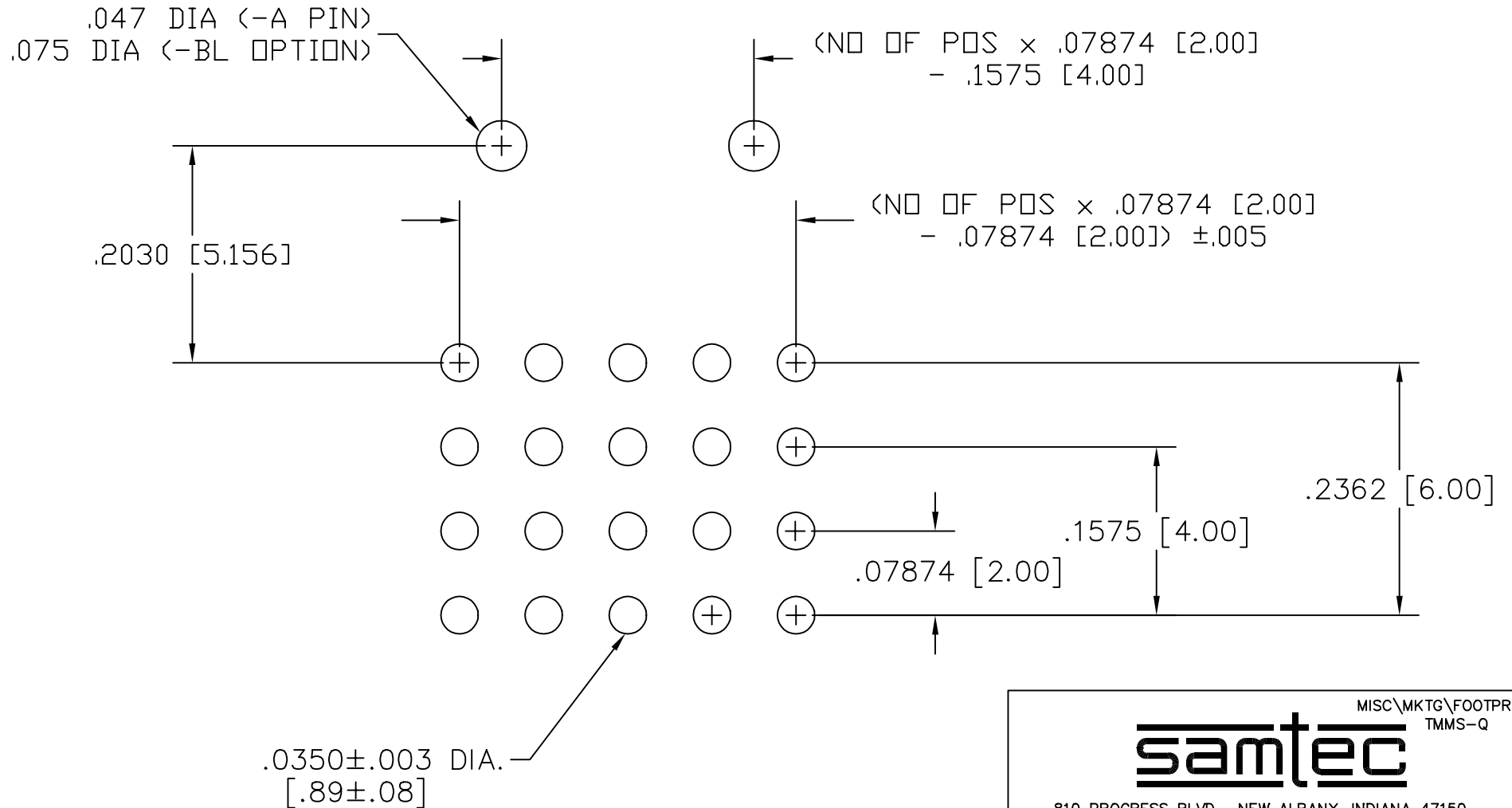
DO NOT SCALE
 FROM THIS PRINT



520 PARK EAST BLVD. NEW ALBANY, INDIANA 47150
 PHONE (812) 944-6733 P.O. BOX 1147
 CODE 55322

MADE BY:
 CHAD F 12/17/2002

RECOMMENDED P.C. BOARD LAYOUT FOR TMMS (QUAD)



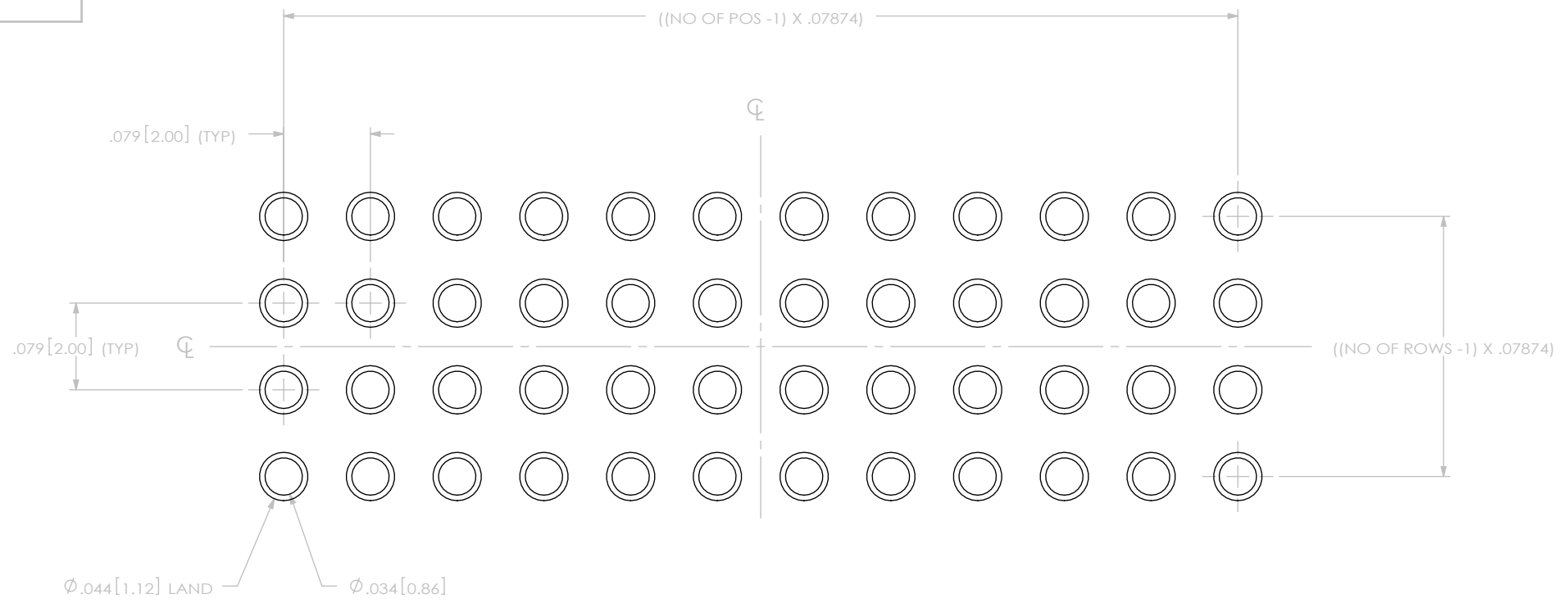
PLOT SCALE: 1 = .1

MISC\MKTG\FOOTPRINT
TMMS-Q

samtec

810 PROGRESS BLVD. NEW ALBANY, INDIANA 47150
PHONE (812) 944-6733 P.O. BOX 1147

B	OZ	PECKERT
5/23/2008	ECN-91554	

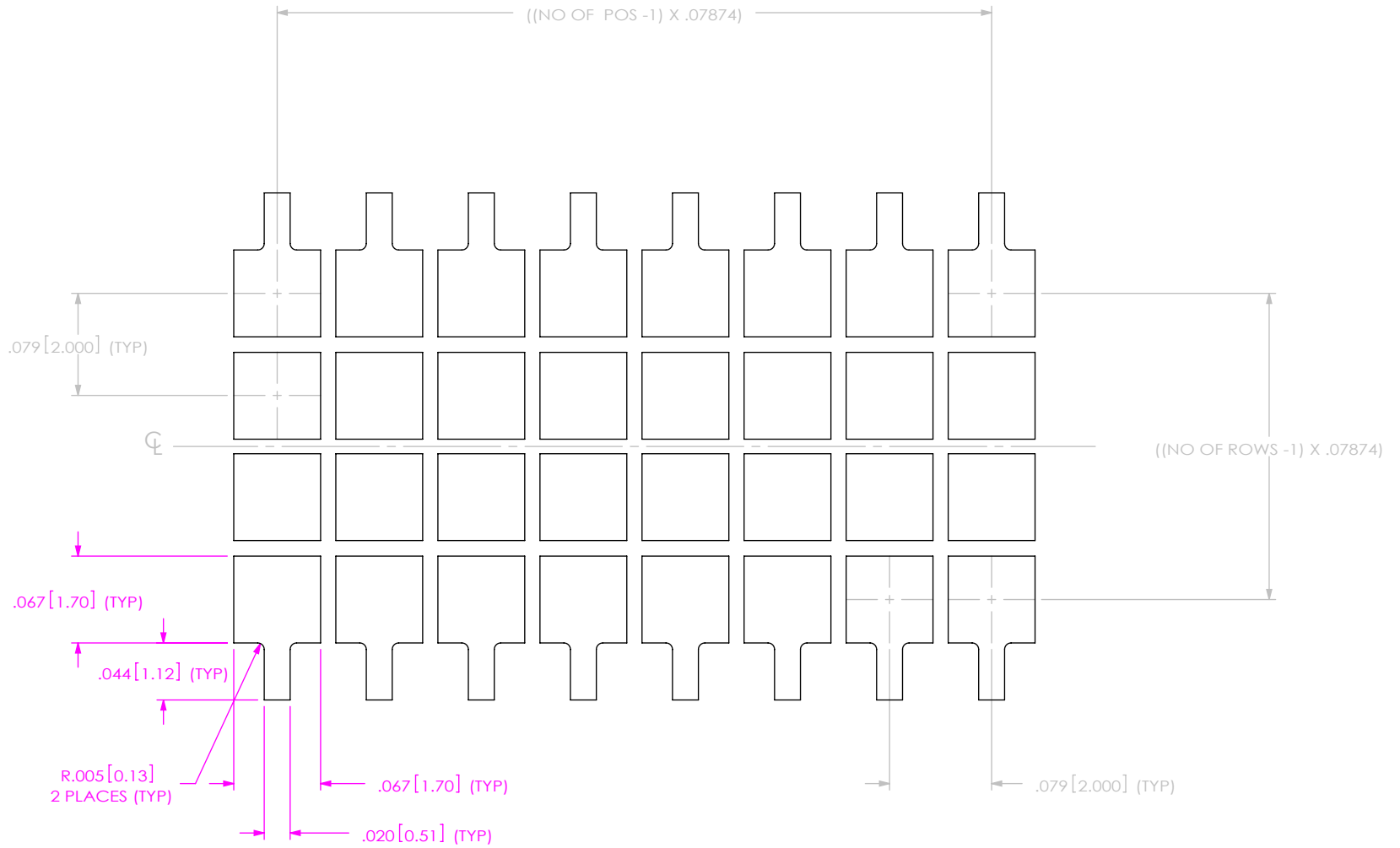


NOTE:
ALL DIMENSIONS SYMMETRICAL ABOUT THE CENTERLINE.

PROPRIETARY NOTE
THIS DOCUMENT CONTAINS INFORMATION CONFIDENTIAL AND PROPRIETARY TO SAMTEC, INC. AND SHALL NOT BE REPRODUCED OR TRANSFERRED TO OTHER DOCUMENTS OR DISCLOSED TO OTHERS OR USED FOR ANY PURPOSE OTHER THAN THAT WHICH IT WAS OBTAINED WITHOUT THE EXPRESSED WRITTEN CONSENT OF SAMTEC, INC.



520 PARK EAST BLVD, NEW ALBANY, IN 47150
PHONE: 812-944-6733 FAX: 812-948-5047
e-Mail: info@SAMTEC.com code: 55322



NOTE:
 1. ALL DIMENSIONS SYMMETRICAL ABOUT THE CENTERLINE.
 2. STENCIL THICKNESS TO BE $.006 [0.152]$.

PROPRIETARY NOTE
 THIS DOCUMENT CONTAINS INFORMATION CONFIDENTIAL AND PROPRIETARY TO SAMTEC, INC. AND SHALL NOT BE REPRODUCED OR TRANSFERRED TO OTHER DOCUMENTS OR DISCLOSED TO OTHERS OR USED FOR ANY PURPOSE OTHER THAN THAT WHICH IT WAS OBTAINED WITHOUT THE EXPRESSED WRITTEN CONSENT OF SAMTEC, INC.

