

Ordering Information:

A2100WV-XP *
1 2

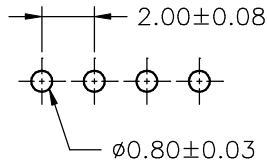
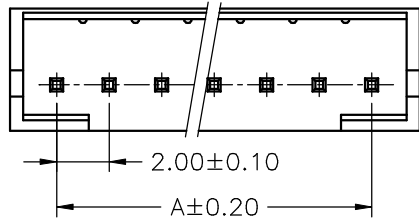
- 1. Part No.
- 2. Style:
 - 1-Type 1
 - 2-Type 2
 - 3-Type 3

SPECIFICATIONS

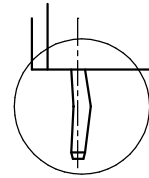
Current Rating: 3A AC,DC
 Voltage Rating: 300V AC,DC
 Temperature Range: -25°C ~ +85°C
 Contact Resistance: 20mΩ Max
 Insulation Resistance: 100MΩ Min
 Withstanding Voltage: 1000V AC/minute
 Pin Material: Brass/Tin-plated
 Material: Nylon 66,UL94V-0
 Pantone Color: 153C~154C

Ordering Information & Dimensions

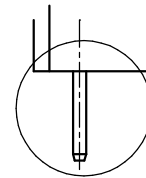
PART NO.	Dimensions	
	A	B
A2100WV-2P	2.00	6.00
A2100WV-3P	4.00	8.00
A2100WV-4P	6.00	10.00
A2100WV-5P	8.00	12.00
A2100WV-6P	10.00	14.00
A2100WV-7P	12.00	16.00
A2100WV-8P	14.00	18.00
A2100WV-9P	16.00	20.00
A2100WV-10P	18.00	22.00
A2100WV-11P	20.00	24.00
A2100WV-12P	22.00	26.00
A2100WV-13P	24.00	28.00
A2100WV-14P	26.00	30.00
A2100WV-15P	28.00	32.00



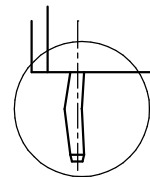
P.C.B LAYOUT



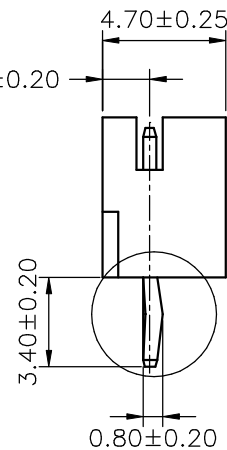
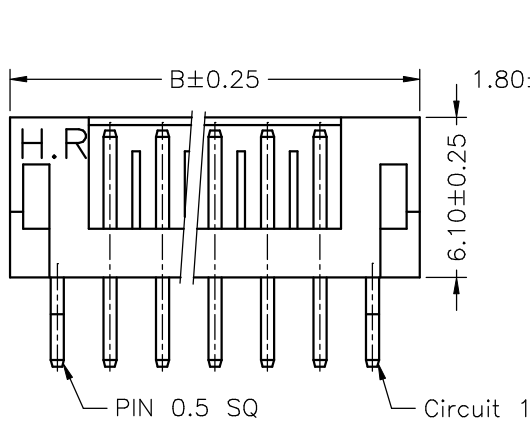
TYPE 1



TYPE 3



TYPE 2



				JOINT TECH ELECTRONIC IND. CO., LTD. JOY DAY INDUSTRIAL CO., LTD.			
UNIT	SCALE	SHEET	TITLE:				
mm		1 of 1	2.00mm PITCH 180° WAFER				
DRAWN BY		APPROVED BY				DRAW NO. :	
董正一		董正一					REV. B0
2001.02.01		2001.02.01					
GENERAL TOLERANCE							
	X. X±0.25	ANGLE±					
B0	NEW RELEASE	2006.01.07	X. XX±0.15				
REV.	DESCRIPTION	DATE	X. XXX±0.05				