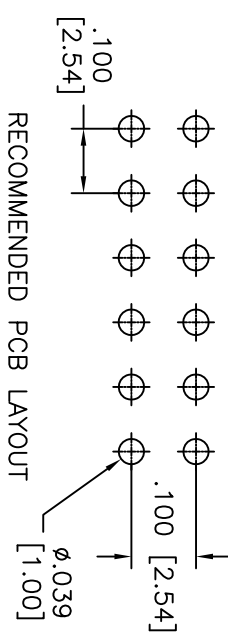
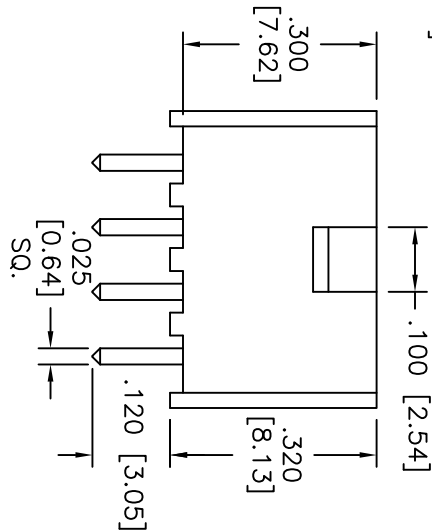
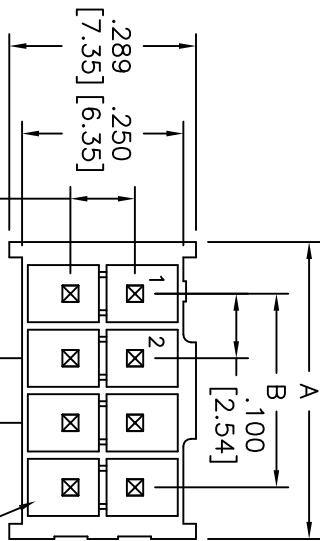


|     |       |             |         |      |
|-----|-------|-------------|---------|------|
| Rev | AWO # | Description | Date    | Appr |
| -   | 9632  | RELEASED    | 6/25/10 |      |

APPROVED: \_\_\_\_\_ TITLE: \_\_\_\_\_

DATE: \_\_\_\_\_



Positions: 2 thru 25 per row  
 A = .100 [2.54] X No. of Positions per row + .060 [1.52]  
 B = .100 [2.54] X No. of (Positions-1) per row

**SPECIFICATIONS:**

Material: Insulator: PBT, glass reinforced, rated UL 94V-2  
 Insulator color: Black  
 Contact: Phosphor Bronze, Gold or Tin over Nickel  
 Electrical:  
 Rated Current: 3A  
 Rated Voltage: 675V AC/DC  
 Contact Resistance: 20 mohms Max  
 Withstand Voltage: 1000V AC/minute  
 Insulation Resistance: 1000 mohms min  
 Operation Temperature: -55°C to +125°C  
 Environmental:  
 Lead free, RoHS compliant.  
 Recommended soldering temp: 235°C for 5 sec.  
 Safety Agency Approvals:  
 UL Recognized & CSA Certified, File no. E2224053

UNLESS OTHERWISE SPECIFIED  
 ALL DIMENSIONS ARE MM [INCHES]  
 TOLERANCES: EXCEPT AS NOTED  
 INCHES: .X ± .10 ØXX ± .10  
 .XX ± .020 ØXXX ± .015  
 .XXX ± .015 ØXXXX ± .010  
 APPROVALS: \_\_\_\_\_ DATE: \_\_\_\_\_

**ADAM TECH**

909 Rahway Avenue, Union, NJ 07083  
 Phone: 908-687-5000 Fax: 908-687-5710

TITLE: .100 [2.54] WAFER, DUAL ROWS, STRAIGHT

|          |    |      |         |      |          |       |        |
|----------|----|------|---------|------|----------|-------|--------|
| DRAWN    | DY | DATE | 6/25/10 | SIZE | PART NO. | SCALE | SHEET  |
| CHECKED  |    |      |         | X    | DMW-XX   | NTS   | 1 OF 1 |
| APPROVED |    |      |         | REF: | S000190  |       |        |

