

Customer Information Sheet

DRAWING No.: M80-837XXXX

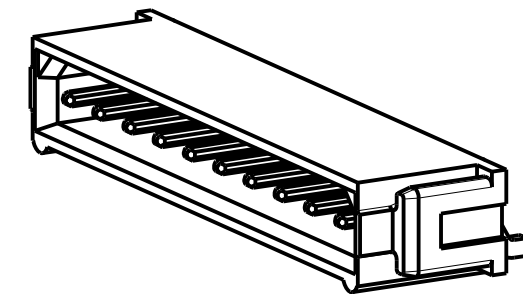
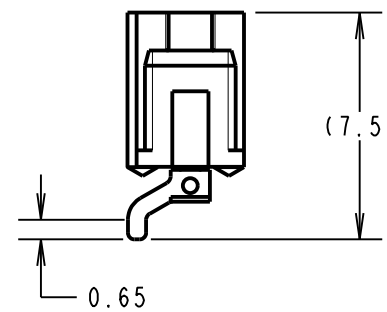
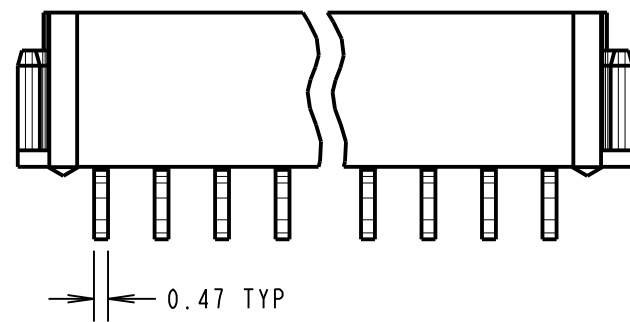
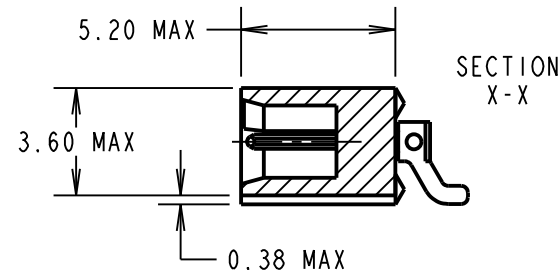
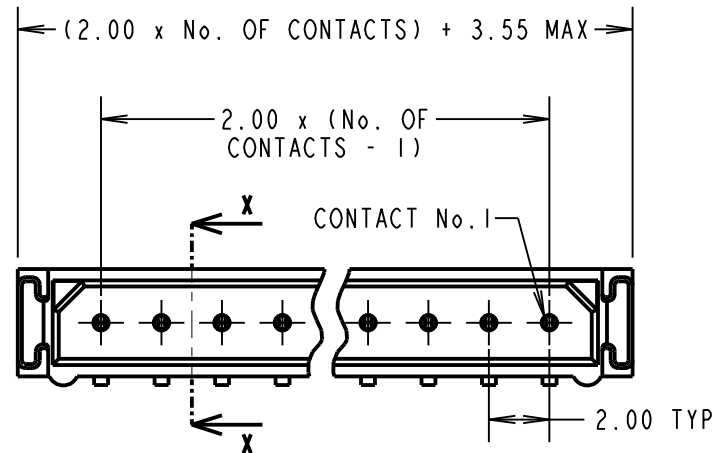
IF IN DOUBT - ASK

©

NOT TO SCALE

THIRD ANGLE PROJECTION

ALL DIMENSIONS IN mm



SPECIFICATIONS:

MATERIAL:

MOULDING = GLASS-FILLED PPS, UL94V-0, BLACK
CONTACT = COPPER ALLOY

FINISH:

CONTACT:

22 = $0.75\mu\text{m}$ GOLD ON CONTACT AREA,
 $0.3\mu\text{m}$ 90/10 TIN/LEAD ON TAILS
42 = $0.75\mu\text{m}$ GOLD ON CONTACT AREA,
 $0.3\mu\text{m}$ 100% TIN OVER NICKEL ON TAILS
45 = $0.75\mu\text{m}$ GOLD

LATCH = NICKEL

ELECTRICAL:

CURRENT RATING AT 25°C = 3.0A MAX
CURRENT RATING AT 85°C = 2.2A MAX
WORKING VOLTAGE = 800V AC/DC
VOLTAGE PROOF = 1200V AC/DC
CONTACT RESISTANCE = $25\text{m}\Omega \text{ MAX}$
INSULATION RESISTANCE = $100\text{M}\Omega \text{ MIN}$

MECHANICAL:

DURABILITY = 500 OPERATIONS

ENVIRONMENTAL:

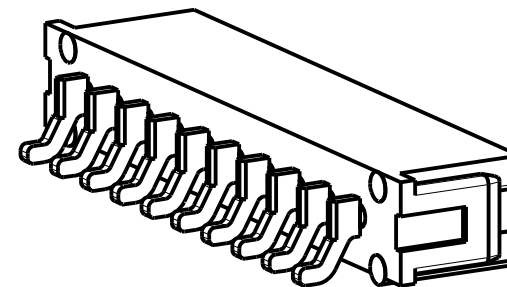
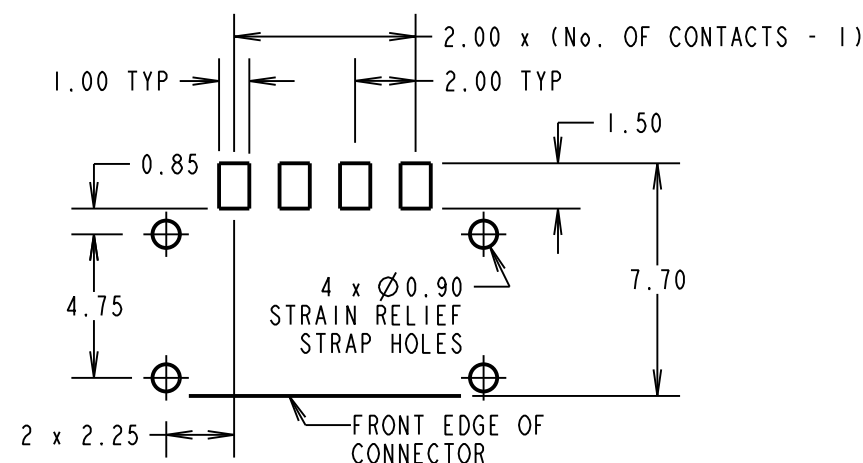
TEMPERATURE RANGE = $-55^\circ\text{C TO } +125^\circ\text{C}$

PACKING:

TUBE, 2-OFF M80-0030006 STRAIN RELIEF STRAPS
PER CONNECTOR IN BAG

FOR COMPLETE SPECIFICATION, SEE COMPONENT SPECIFICATION C005XX (LATEST ISSUE)

RECOMMENDED PCB LAYOUT
TOLERANCE $\pm 0.05\text{mm}$



ORDER CODE:
M80-837XXXX

No. OF CONTACTS
02 - 07, 17, 22

FINISH
22 - GOLD, 90/10 TIN/LEAD
42 - GOLD, 100% TIN OVER NICKEL
45 - GOLD

MGP	4	23.07.21	30679
NAME	ISS.	DATE	CN/CO
APPROVED: MGP			
CHECKED: MR			
DRAWN: S.FLOWER			
CUSTOMER REF.:			
ASSEMBLY DRG:			

HARWIN

www.harwin.com
technical@harwin.com

THIS DRAWING AND ANY INFORMATION OR DESCRIPTIVE MATTER SET OUT HEREON ARE CONFIDENTIAL AND COPYRIGHT PROPERTY OF THE HARWIN GROUP AND MUST NOT BE DISCLOSED, LOANED, COPIED OR USED FOR MANUFACTURING, TENDERING OR FOR ANY OTHER PURPOSE WITHOUT THEIR WRITTEN PERMISSION.

TOLERANCES
X. = $\pm 1\text{mm}$
X.X = $\pm 0.50\text{mm}$
X.XX = $\pm 0.20\text{mm}$
X.XXX = $\pm 0.01\text{mm}$
ANGLES = $\pm 5^\circ$
UNLESS STATED

MATERIAL:
SEE ABOVE

FINISH:
SEE ABOVE

S/AREA:
mm²

TITLE: DATAMATE L-TEK
MALE SIL HORIZONTAL SMT
ASSEMBLY (UNLATCHED)

DRAWING NUMBER:
M80-837XXXX

SHT
2 OF 2