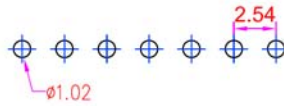
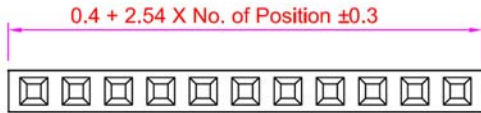
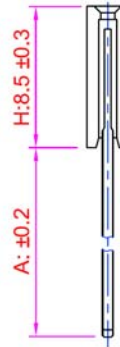
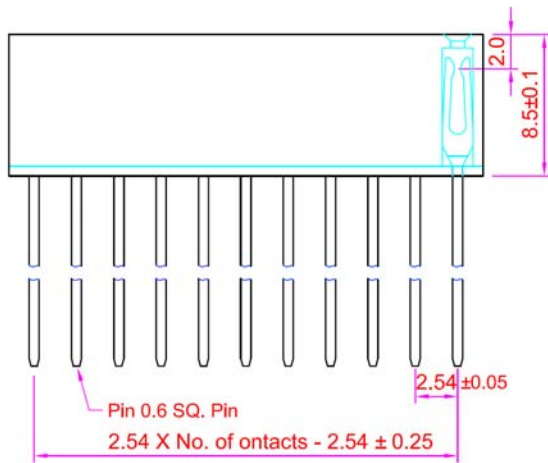


Recommended P.C. Board Hole Layout



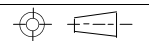
SPECIFICATIONS

Current Rating:	3 Amps
Insulator Resistance:	1000 Megohms Min.
Contact Resistance:	20m ohms max.
Withstanding:	AC 600V
Contact Material:	Brass
Insulator Material:	Polyester, UL94V-0 PBT
Contact Plating:	Gold Flash (std)
Operating Temp:	-40C ~ +105C



Series	Rows	Style/Profile (H)	Tail Length (B)	Positions	Plating
ARS	0X	XX	X	XX	XX
.100 pitch receptacle strip	01=Single 02=Dual	[Blank]=[8.5mm (.335")]	[Blank]=.126" A=.39" B=.41" C=.19"	02-40	TN=Tin SGXX=Selective Gold GDXX=Gold XX=Flash if blank, 10,15, 30u"

RoHS compliant

Rev.	Description	Date	Approved	Drawing	Name	Date
				Approved	Howard	08/10/09
				Checked	Lizzy	08/10/09
				Drawn	Tina	08/10/09
				0.0 ± 0.35	0.00 ± 0.20	Angles ± 3'
				 UNIT: mm		


Central Components Manufacturing
 440 Lincoln Blvd., Middlesex, New Jersey 08846
 Phone 732 469-5720 888 288-5152 Fax 732 469-1919

Part No.: **ARS-01-XX-X-XX-XX**

Description: Female straight pin header, .100" pitch, elevated option