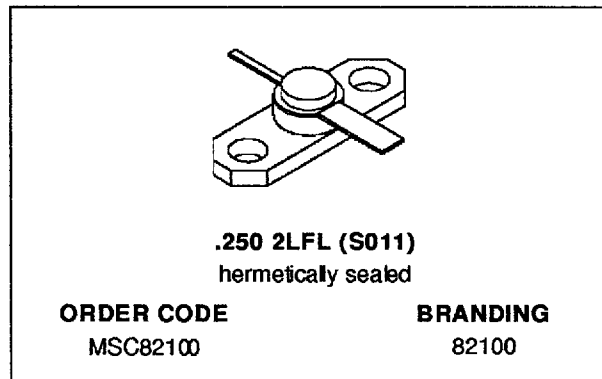


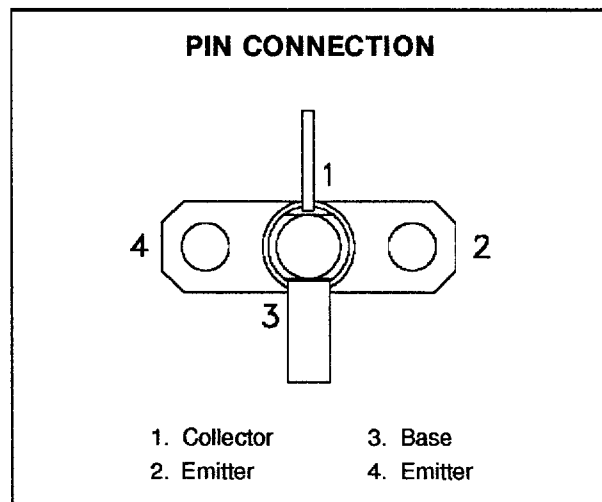
RF & MICROWAVE TRANSISTORS
GENERAL PURPOSE LINEAR APPLICATIONS

- EMITTER BALLASTED
- CLASS A LINEAR OPERATION
- COMMON EMITTER
- VSWR CAPABILITY $\infty:1$ @ RATED CONDITIONS
- ft 1.6 GHz TYPICAL
- NOISE FIGURE 15.5 dB @ 2 GHz
- $P_{OUT} = 27$ dBm MIN. @ 1.0 GHz



DESCRIPTION

The MSC82100 is a hermetically sealed NPN power transistor with a fishbone, emitter finger ballasted geometry utilizing a refractory/gold metallization system. The device is designed specifically for Class A linear applications to provide high gain and high output power at the 1.0 dB compression point.



ABSOLUTE MAXIMUM RATINGS ($T_{case} = 25^{\circ}C$)

Symbol	Parameter	Value	Unit
P_{DISS}	Power Dissipation (see Safe Area)	—	W
I_C	Device Bias Current	200	mA
V_{CE}	Collector-Emitter Bias Voltage*	20	V
T_J	Junction Temperature	200	$^{\circ}C$
T_{STG}	Storage Temperature	- 65 to +200	$^{\circ}C$

THERMAL DATA

$R_{TH(j-c)}$	Junction-Case Thermal Resistance*	20	$^{\circ}C/W$
---------------	-----------------------------------	----	---------------

*Applies only to rated RF amplifier operation

MSC82100**ELECTRICAL SPECIFICATIONS (T_{case} = 25°C)****STATIC**

Symbol	Test Conditions		Value			Unit
			Min.	Typ.	Max.	
BV _{CB0}	I _C = 1mA	I _E = 0mA	45	—	—	V
BV _{EB0}	I _E = 1mA	I _C = 0mA	3.5	—	—	V
BV _{CE0}	I _C = 5mA	I _B = 0mA	20	—	—	V
I _{CEO}	V _{CE} = 18V		—	—	0.5	mA
h _{FE}	V _{CE} = 5V	I _C = 100mA	15	—	120	—

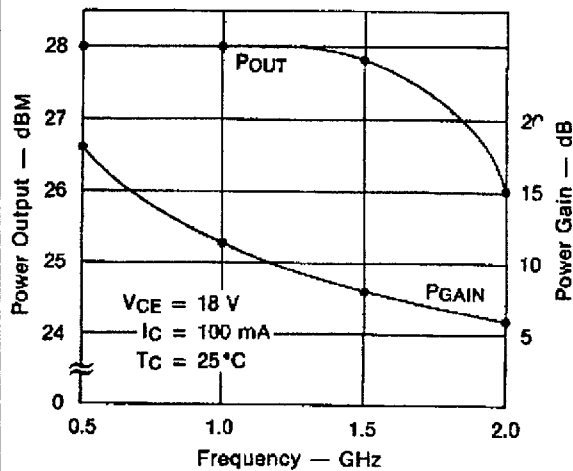
DYNAMIC

Symbol	Test Conditions		Value			Unit
			Min.	Typ.	Max.	
G _P *	f = 1.0 GHz	P _{OUT} = 27 dBm	10.5	11.5	—	dB
ΔG _P *	f = 1.0 GHz	P _{OUT} = 27 dBm ΔP _{OUT} = 10 dB	—	—	1	dB
C _{OB}	f = 1 MHz	V _{CB} = 28 V	—	—	3.2	pF

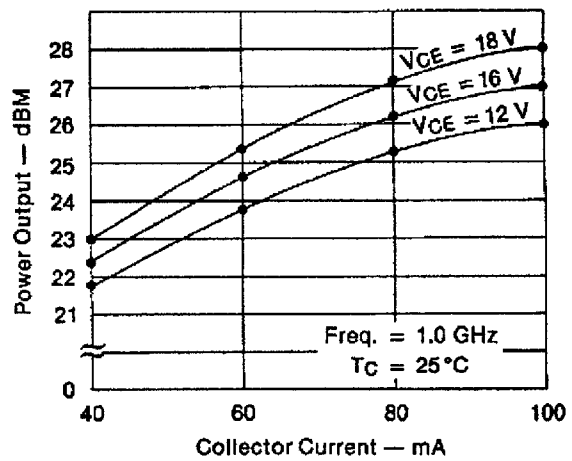
* Note: V_{CE} = 18V
I_C = 100mA

TYPICAL PERFORMANCE

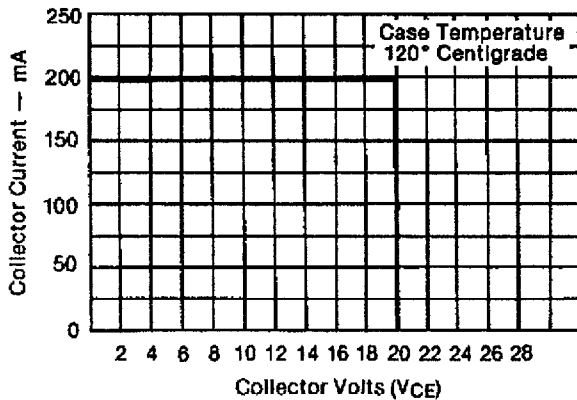
TYPICAL POWER OUTPUT & GAIN @ 1dB COMPRESSION POINT vs FREQUENCY



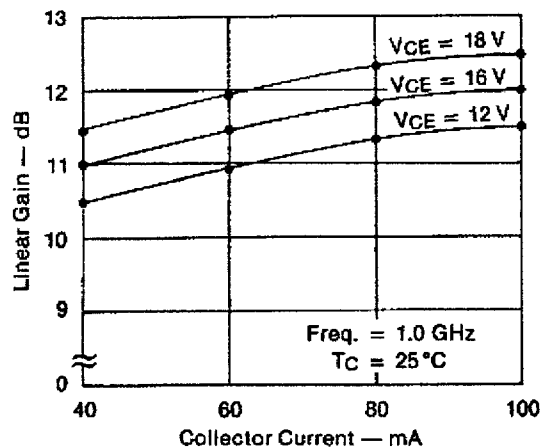
TYPICAL POWER OUTPUT & GAIN @ 1dB COMPRESSION POINT vs COLLECTOR CURRENT



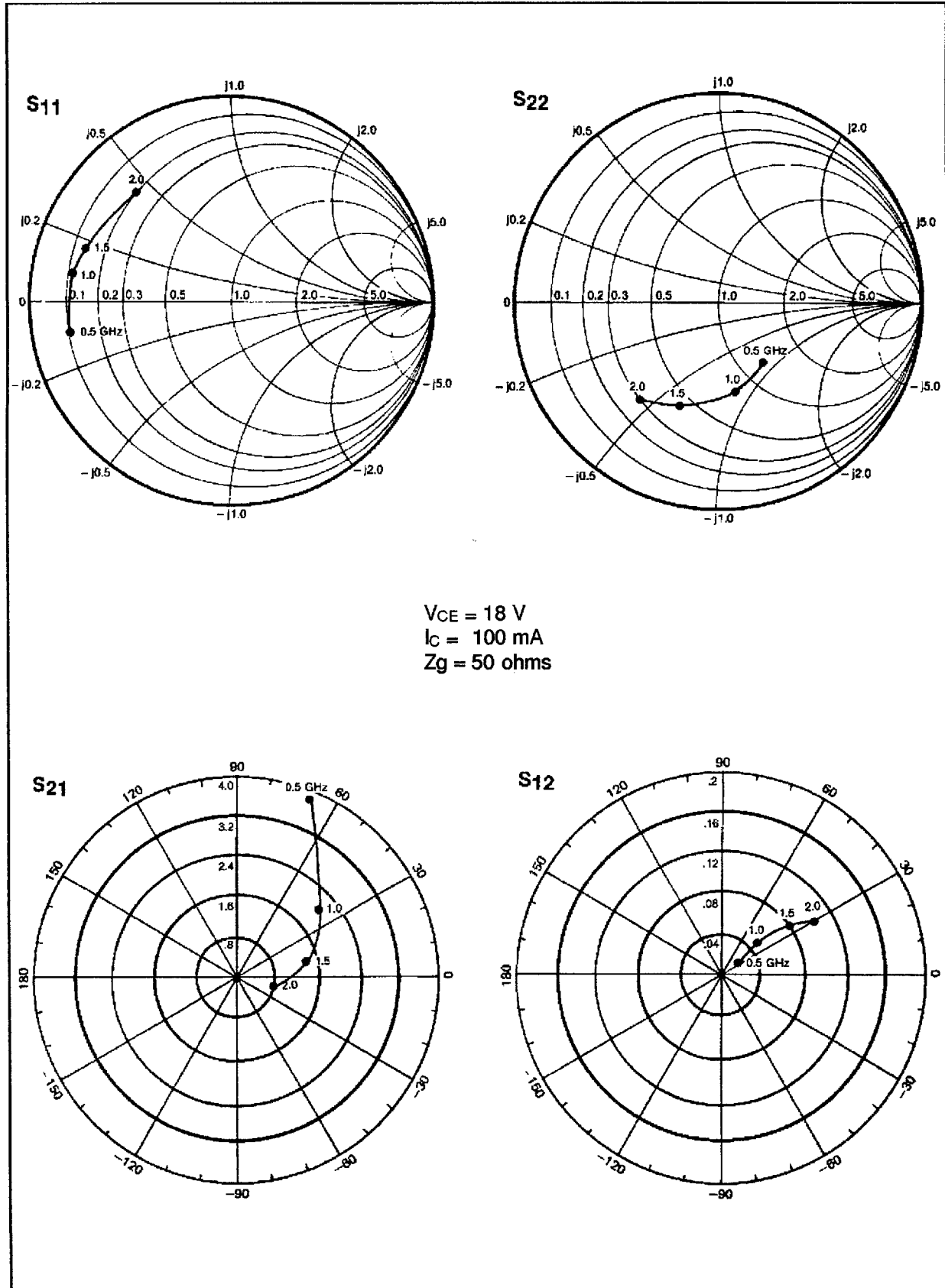
MAXIMUM OPERATING AREA FOR FORWARD BIAS OPERATION



TYPICAL LINEAR GAIN vs COLLECTOR CURRENT

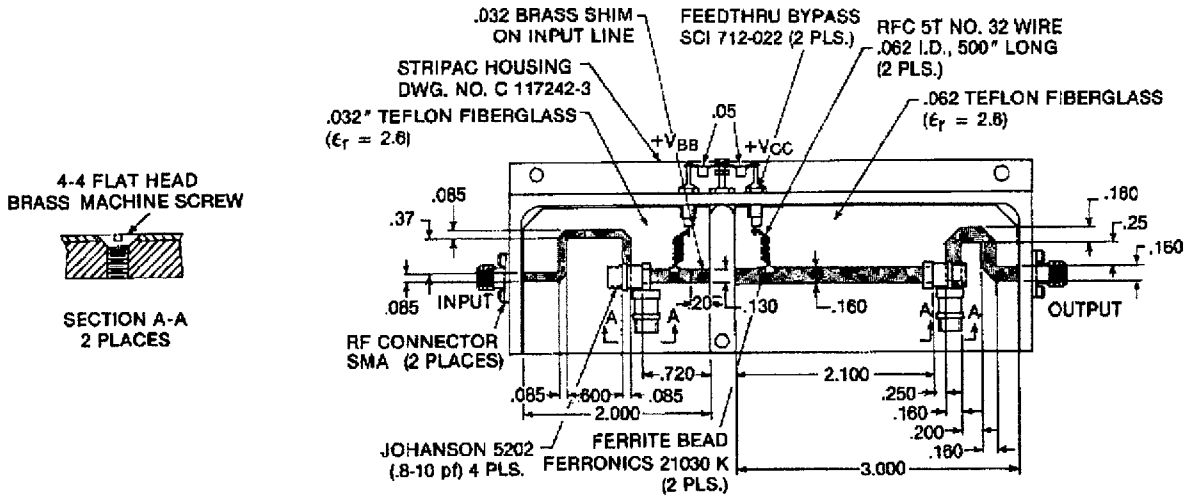


TYPICAL S-PARAMETERS



TEST CIRCUIT

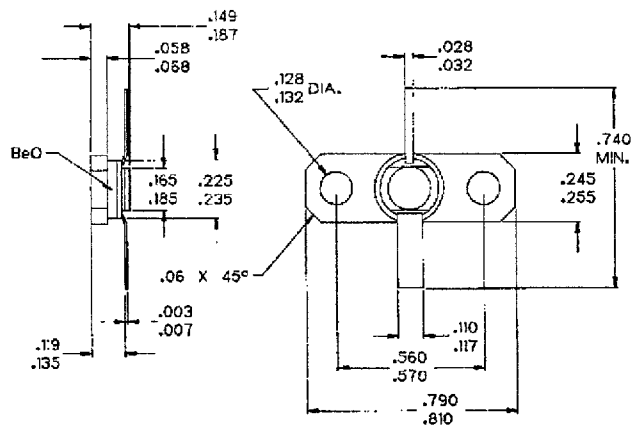
Ref.: Dwg. No. C127323



All dimensions are in inches.
Frequency 1.0 GHz

PACKAGE MECHANICAL DATA

Ref.: Dwg. No.: J135021C



NOTES:
1. ALL TOLERANCE $\pm .010$ EXCEPT WHERE NOTED;
DIMENSIONS IN INCHES.