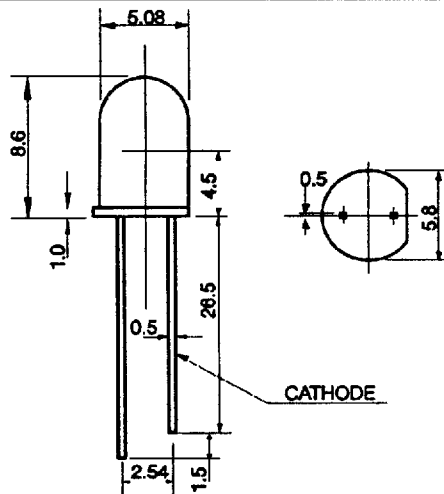
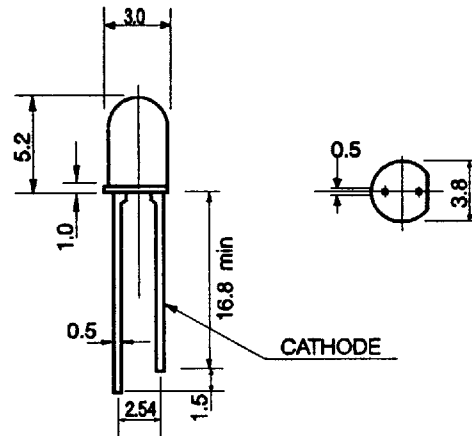


AlGaAs RED SOLID STATE LAMPS

T1¾ RED DIFFUSED - ISLD101, ISLD150
T1¾ CLEAR - ISLU500/1, ISLU300/1, ISL3110
T1 RED DIFFUSED - ISLK101, ISLK150
T1 CLEAR - ISLU600/1, ISLU400/1

PACKAGE DIMENSIONS**T1¾**

(All Dimensions in mm)

T1

(All Dimensions in mm)

DESCRIPTION

This family of solid state lamps utilises AlGaAs Red material to produce Outstanding light output over a wide range of drive currents. These lamps are ideally suited for use in bright ambient conditions and where high light output is required with minimum power input.

The ISLD101 & ISLD150 are T1¾ AlGaAs Red diffused LED lamps with typical luminous intensities of 70mcd @ 20mA and 3.0mcd @ 1mA .

The ISL3110, ISLU300 & ISLU500 are T1¾ clear AlGaAs LED lamps with typical luminous intensities of 300,700 & 1300mcd @ 20mA .

The ISLU301 & ISLU501 are T1¾ clear AlGaAs LED lamps with typical luminous intensities of 70 & 130mcd @ 2mA .

The ISLK101 & ISLK150 are T1 AlGaAs Red diffused LED lamps with typical luminous intensities of 45mcd @ 20mA & 2.0mcd @ 1mA .

The ISLU400 & ISLU600 are T1 clear AlGaAs LED lamps with typical luminous intensities of 500 & 900mcd @ 20mA

The ISLU401 & ISLU601 are T1 clear AlGaAs LED lamps with typical luminous intensities of 50 & 90mcd @ 2mA.

FEATURES

- Exceptional Brightness
- Deep Red Colour
- Popular T-1¾ & T1 Packages
- Very Low Power Consumption
- Solid State Reliability
- CMOS/MOS/TTL Compatible

APPLICATIONS

- High Ambient Light Conditions
- Low Power Circuits
- Battery Powered Equipment
- Security Systems
- Consumer Electronics
- Medical Equipment

ABSOLUTE MAXIMUM RATINGS (Ta=25°C)

Power Dissipation	87mW
Derate Linearly from 25°C	1.16mW/°C
Storage and Operating Temperatures	-55°C to +100°C
Lead Soldering time at 260°C	5 seconds
Continuous Forward Current	30mA
Peak Forward Current (10us pulse)	500mA
Reverse Voltage	5.0V

ISOCOM COMPONENTS LTD.

Unit 25B, Park View Road West, Park View Industrial Estate, Brenda Road,
 Hartlepool, Cleveland, England, TS25 1YD.

Tel: (0429) 863609. Fax: (0429) 863581. Telex: 587712 ISCOMPG.

ISOCOM INC.

256 East Hamilton Avenue, Suite H, Campbell, California, 95008, U.S.A.

Tel: (408) 370 2212. Fax: (408) 370 2309.

DA-90005-AAS02

ELECTRICAL/OPTICAL CHARACTERISTICS AT Ta = 25°C

PARAMETER	Package	Luminous Intensity	Forward Voltage	Peak Wave-length	Spectral line	Capacitance	Reverse Voltage	Half Angle (Total)	Lens
		Iv (min)	Vf (max)	(Typ) nm	Halfwidth	C (Typ.)	Vr (min)	deg.	
Units		mcd	V		nm	pF	V		
CONDITIONS		If(mA) 1 2 20	If(mA) 20	If(mA) 1 2 20	If(mA) 1 2 20	Vf=0V f=1MHz	Ir(uA) 100		
ISLU500	T1¾	600	2.2	655	15	30	5.0	10	Clear
ISLU501	T1¾	60	2.2	655	15	30	5.0	10	Clear
ISLU300	T1¾	300	2.2	655	15	30	5.0	10	Clear
ISLU301	T1¾	30	2.2	655	15	30	5.0	10	Clear
ISLD101	T1¾	30	2.2	665	20	30	5.0	70	Red diff.
ISL3110	T1¾	120	2.2	655	15	30	5.0	10	Clear
ISLD150	T1¾	1.2	2.2	665	20	30	5.0	70	Red diff.
ISLK101	T1	22	2.2	665	20	30	5.0	65	Red diff.
ISLK150	T1	1.2	2.2	665	20	30	5.0	65	Red diff.
ISLU600	T1	400	2.2	655	15	30	5.0	8	Clear
ISLU601	T1	40	2.2	655	15	30	5.0	8	Clear
ISLU400	T1	225	2.2	655	15	30	5.0	8	Clear
ISLU401	T1	20	2.2	655	15	30	5.0	8	Clear

Fig. 1 Luminous Intensity vs. Angular Displacement

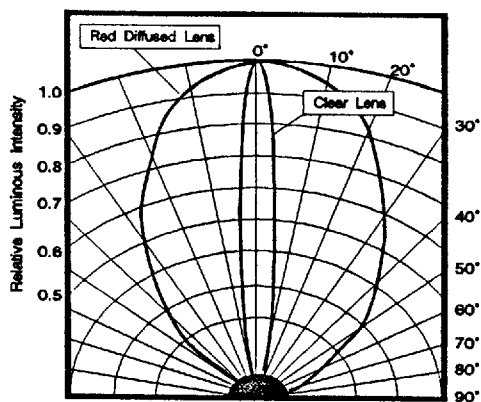


Fig. 3 Luminous Intensity vs. Forward Current

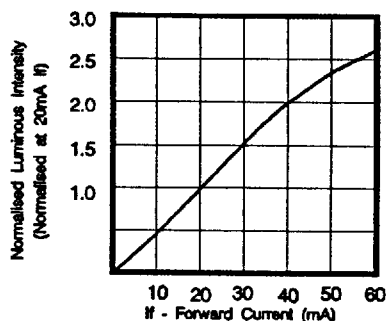


Fig. 2 Forward Current vs. Forward Voltage

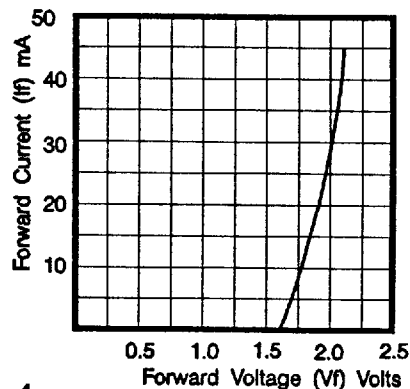


Fig. 4 Relative Intensity vs. Wavelength

