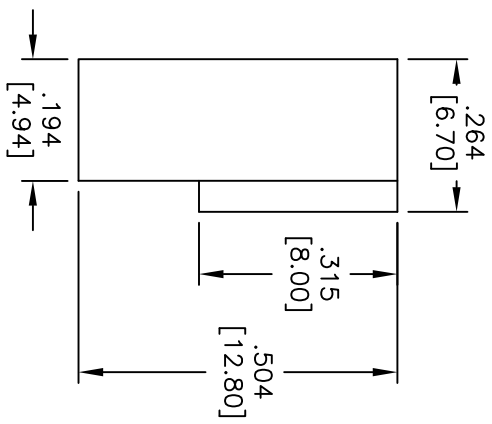
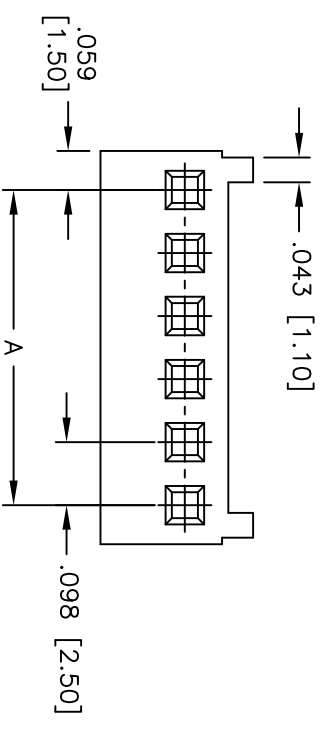


| Rev | AWO # | Description | Date | Appr |
|-----|-------|-------------|----------|------|
| - | | RELEASED | 11/25/10 | |

APPROVED: _____
 DATE: _____ TITLE: _____



Positions: 2 thru 20
 A = .098 [2.50] X No. of Spaces
 B = .098 [2.50] X No. of Spaces + .118 [3.00]

UNLESS OTHERWISE SPECIFIED
 ALL DIMENSIONS ARE INCHES [MM]
 TOLERANCES ARE NOTED
 INCHES HOLEES

| | | | |
|------|--------|-------|--------|
| .X | ± .10 | Ø.X | ± .10 |
| .XX | ± .020 | Ø.XX | ± .015 |
| .XXX | ± .015 | Ø.XXX | ± .010 |

ADAM TECH
 909 Railway Avenue, Union, NJ 07083
 Phone: 908-687-5000 Fax: 908-687-5710



SPECIFICATIONS:
Material: Insulator: Nylon 66, Rated UL 94V-0
 Insulator color: White
Contacts: Brass
Plating: Tin over Copper underplate overall
Electrical:
 Operating voltage: 250 VAC max.
 Current rating: 3 Amps max.
 Insulation resistance: 1000 Mohms min
 Dielectric withstanding voltage: 1500 VAC / minute.
Temperature Rating: Operating temperature: -40°C to +105°C

| | | | | | |
|----------|----|----------|--------------|-------------|--------------|
| DRAWN | DY | 11/25/10 | SIZE | PART NO. | REV. |
| CHECKED | | | X | 25MTA-XX-V0 | |
| APPROVED | | | REF: S00123T | SCALE: NTS | SHEET 1 OF 1 |