

NOTES:

1. $\text{\textcircled{C}}$ REPRESENTS A CRITICAL DIMENSION.
2. MINIMUM PUSHOUT FORCE: 4.45N[1.00lb.].
3. MAXIMUM ALLOWABLE BOW: 0.05 MM/MM [.002] AFTER ASSEMBLY.
4. POST HEIGHT VARIATION BETWEEN ANY TWO PINS: 0.13[.005] MAXIMUM.
5. FOR LOCKING CLIPS: 3.336 N[.75lb.] MIN RETENTION.
6. MEASURE AT BEND
7. MAX PIN ROTATION IN BODY TO BE 2°.

**DESIGNED & DIMENSIONED
IN MILLIMETERS[INCHES]**

TLMM-1XX-01-X-D-XX-XX

No. OF POSITIONS
-02 THRU -25
(PER ROW)

LEAD STYLE

PLATING SPECIFICATION

- L: LIGHT SELECTIVE (USE T-1S13-XX-L-2)
- F: FLASH GOLD SELECTIVE (USE T-1S13-XX-F-2)

OPTION

- LC: LOCKING CLIP
(USE LC-05-TM FOR THROUGH HOLE STYLES, SEE FIG. 1)
(USE LC-07-TM FOR -SM STYLE, SEE FIG. 3, SHT. 3)
NOT AVAILABLE FOR -RA STYLE
- TR: TAPE & REEL (FOR -SM OPTION ONLY)
- K: POLYIMIDE FILE PAD
(USE K-DOT-.295-.406-.005, SEE FIG. 4, SHT. 4)
(ONLY AVAILABLE ON -SM)
- XX: PIN No. TO BE OMITTED (POLARIZED OPTION)

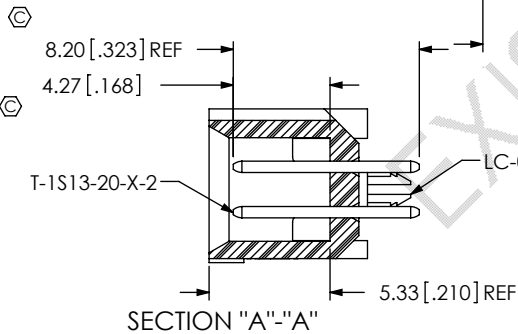
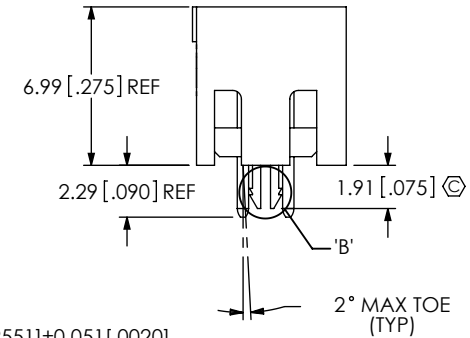
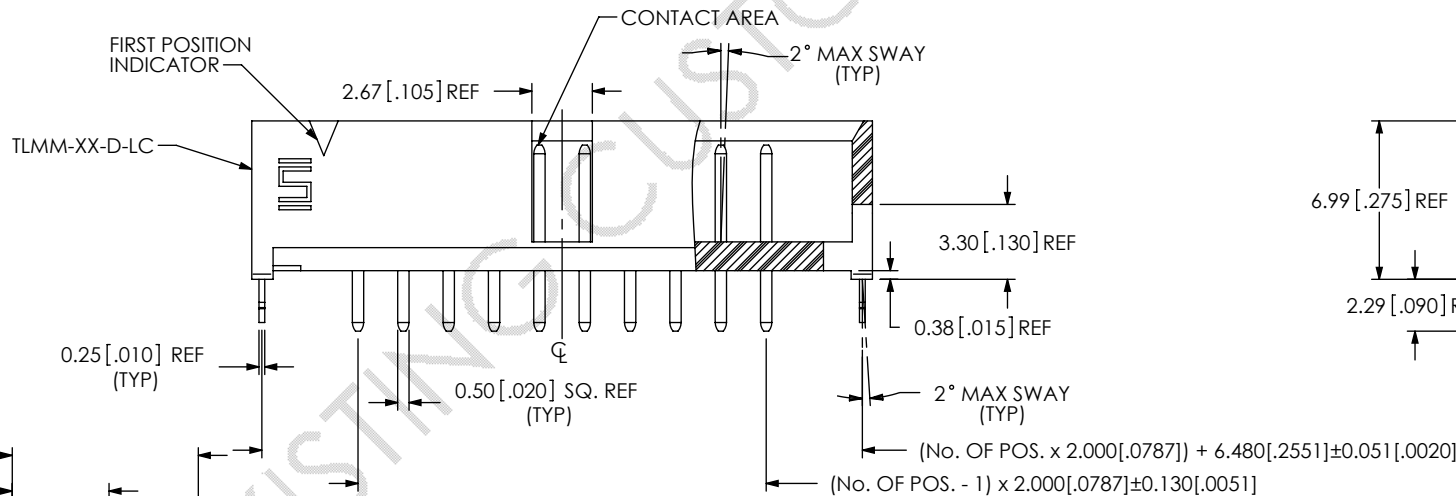
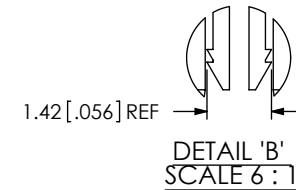
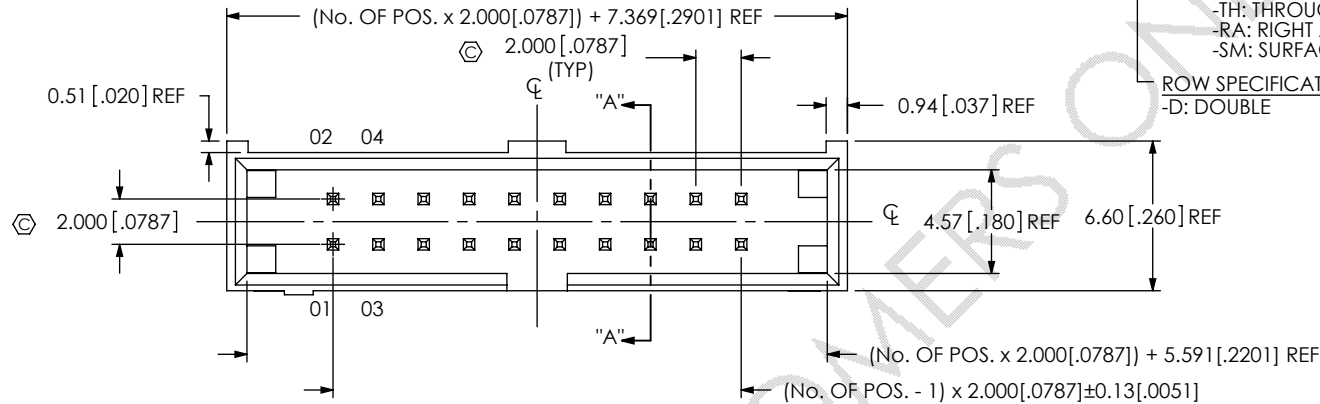
BODY HEIGHT

- TH: THROUGH HOLE (SEE FIG. 1, SHT. 1)
- RA: RIGHT ANGLE (SEE FIG. 2, SHT. 2)
- SM: SURFACE MOUNT (SEE FIG. 3, SHT. 3)

ROW SPECIFICATION

- D: DOUBLE

FIG. 1
(TLMM-110-01-X-D-TH-LC SHOWN)



UNLESS OTHERWISE SPECIFIED,
DIMENSIONS ARE IN MILLIMETERS.
TOLERANCES ARE:
DECIMALS ANGLES
X.X: ± 0.3 [.01]
X.XX: ± 0.13 [.005]
X.XXX: ± 0.051 [.0020]

PROPRIETARY NOTE

THIS DOCUMENT CONTAINS INFORMATION
CONFIDENTIAL AND PROPRIETARY TO
SAMTEC, INC. AND SHALL NOT BE REPRODUCED
OR TRANSFERRED TO OTHER DOCUMENTS OR
DISCLOSED TO OTHERS OR USED FOR ANY
PURPOSE OTHER THAN THAT WHICH IT WAS
OBTAINED WITHOUT THE EXPRESSED WRITTEN
CONSENT OF SAMTEC, INC.



520 PARK EAST BLVD, NEW ALBANY, IN 47150
PHONE: 812-944-6733 FAX: 812-948-5047
fromparent+e-Mail: info@SAMTEC.com code: 55322

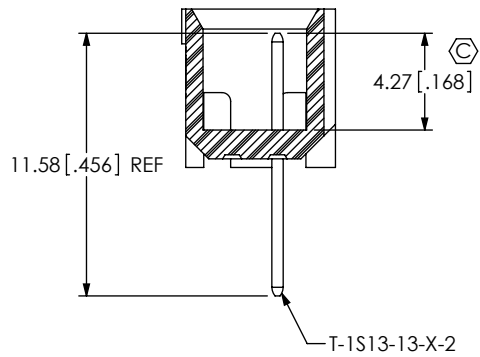
MATERIAL: DO NOT SCALE DRAWING SHEET SCALE: 3:1
INSULATOR: ZYTEL HTNFR52G30NH, COLOR: BLACK
TERMINAL: PHOS BRONZE

DESCRIPTION:
2MM SHROUDED TERMINAL STRIP

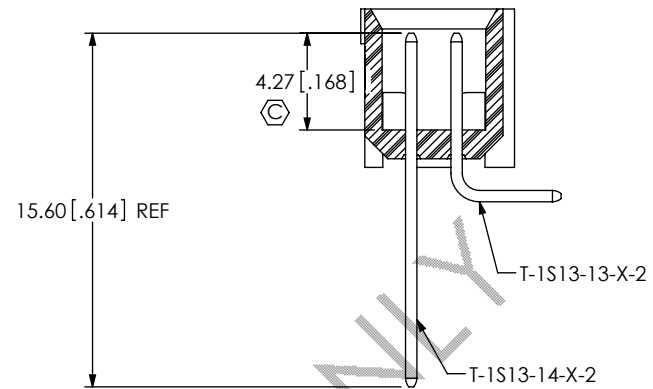
DWG. NO.
TLMM-1XX-01-X-D-XX-XX

BY: T. NEWTON 01/04/2007 SHEET 1 OF 4

DO NOT
SCALE FROM
THIS PRINT

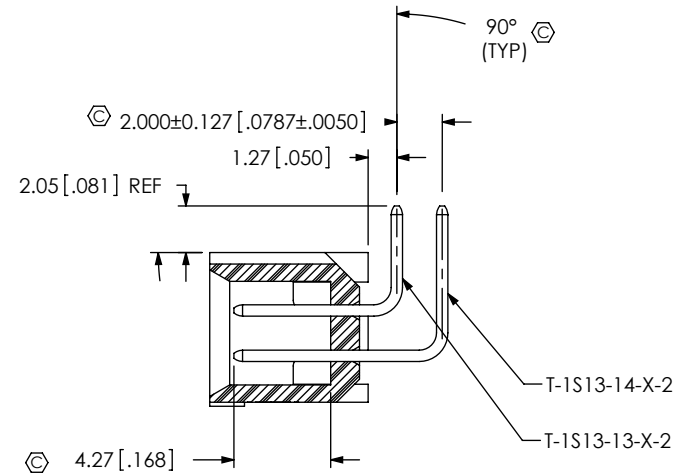
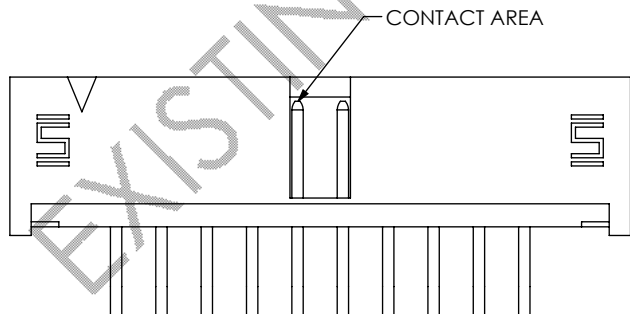
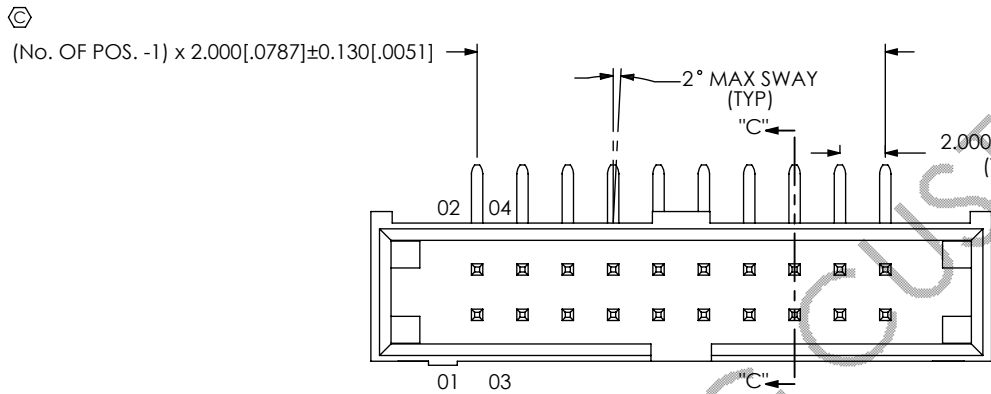


IN PROCESS 1
(FOR -RA ONLY)



IN PROCESS 2
(FOR -RA ONLY)

FIG 2
(TLMM-110-01-X-D-RA SHOWN)
(DIFFERENT AS SHOWN, OTHERWISE SAME AS FIG 1)



SECTION "C"-"C"

PROPRIETARY NOTE
THIS DOCUMENT CONTAINS INFORMATION
CONFIDENTIAL AND PROPRIETARY TO
SAMTEC, INC. AND SHALL NOT BE REPRODUCED
OR TRANSFERRED TO OTHER DOCUMENTS OR
DISCLOSED TO OTHERS OR USED FOR ANY
PURPOSE OTHER THAN THAT WHICH IT WAS
OBTAINED WITHOUT THE EXPRESSED WRITTEN
CONSENT OF SAMTEC, INC.

DO NOT SCALE DRAWING

SHEET SCALE: 3:1

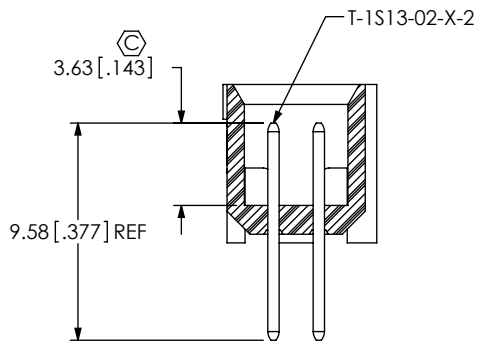
samtec

520 PARK EAST BLVD. NEW ALBANY, IN 47150
PHONE: 812-944-6733 FAX: 812-948-5047
fromparent+e-Mail: info@SAMTEC.com code: 55322

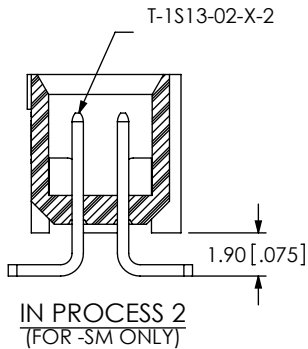
DESCRIPTION:
2MM SHROUDED TERMINAL STRIP

DWG. NO.
TLMM-1XX-01-X-D-XX-XX

BY: T. NEWTON 01/04/2007 SHEET 2 OF 4

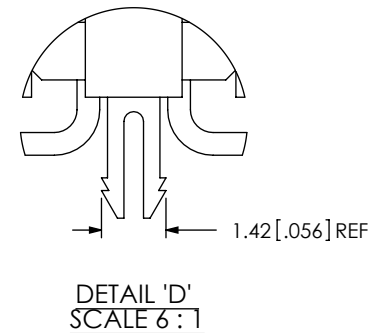
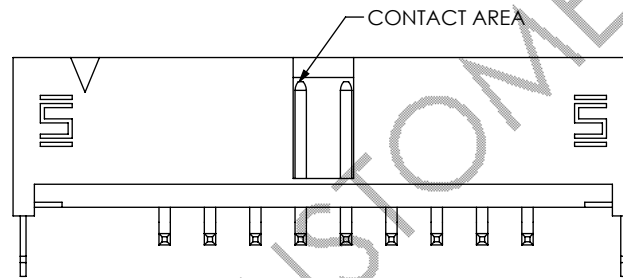
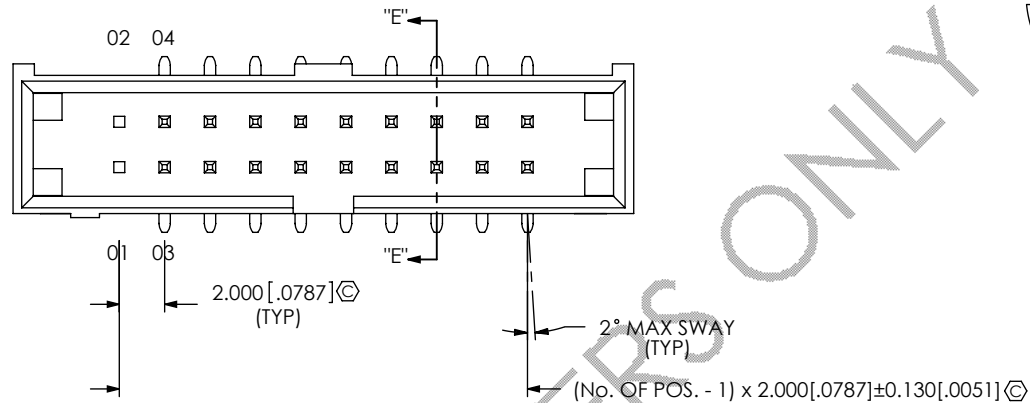


IN PROCESS 1
(FOR -SM ONLY)

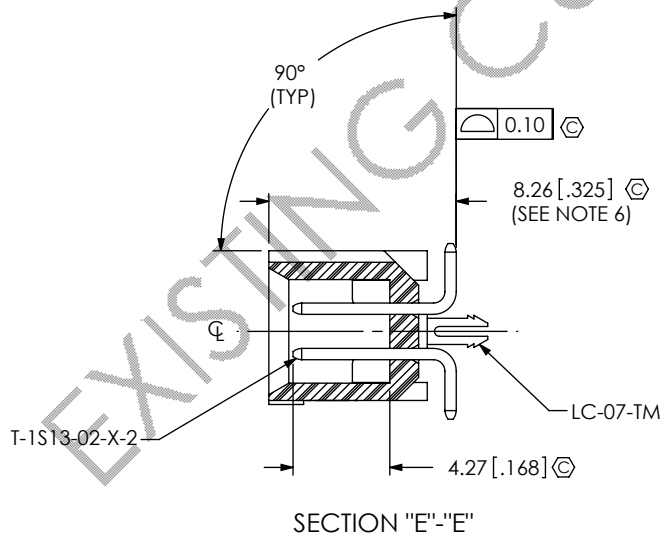
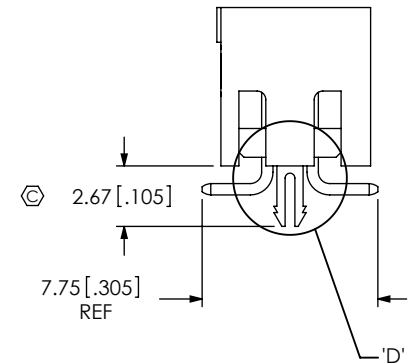


IN PROCESS 2
(FOR -SM ONLY)

FIG 3
(TLMM-110-01-X-D-SM-LC SHOWN)
(DIFFERENT AS SHOWN, OTHERWISE SAME AS FIG 1)



DETAIL 'D'
SCALE 6:1



SECTION "E"-"E"

PROPRIETARY NOTE
THIS DOCUMENT CONTAINS INFORMATION
CONFIDENTIAL AND PROPRIETARY TO
SAMTEC, INC. AND SHALL NOT BE REPRODUCED
OR TRANSFERRED TO OTHER DOCUMENTS OR
DISCLOSED TO OTHERS OR USED FOR ANY
PURPOSE OTHER THAN THAT WHICH IT WAS
OBTAINED WITHOUT THE EXPRESSED WRITTEN
CONSENT OF SAMTEC, INC.

DO NOT SCALE DRAWING

SHEET SCALE: 3:1

samtec

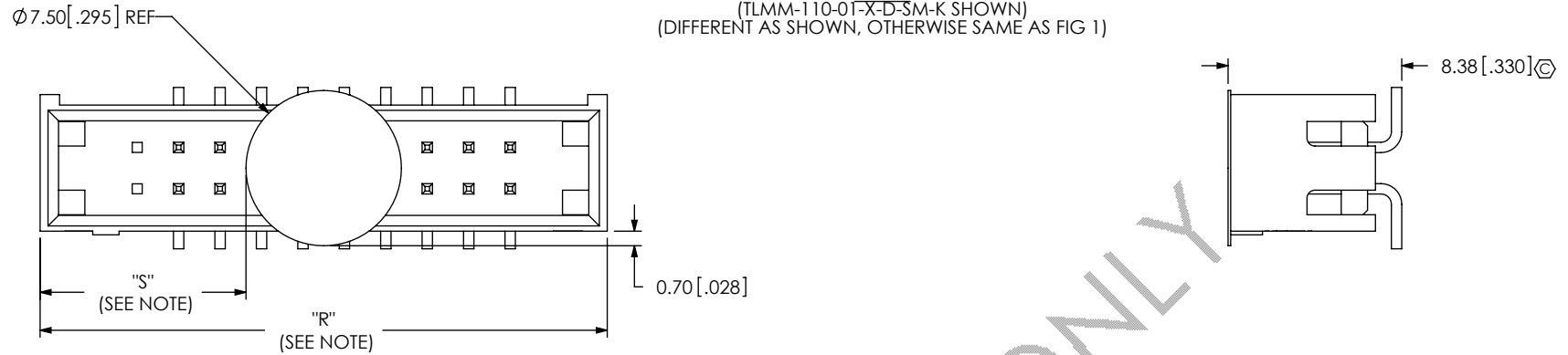
520 PARK EAST BLVD., NEW ALBANY, IN 47150
PHONE: 812-944-6733 FAX: 812-948-5047
fromparent+e-Mail: info@SAMTEC.com code: 55322

DESCRIPTION:
2MM SHROUDED TERMINAL STRIP

DWG. NO.
TLMM-1XX-01-X-D-XX-XX

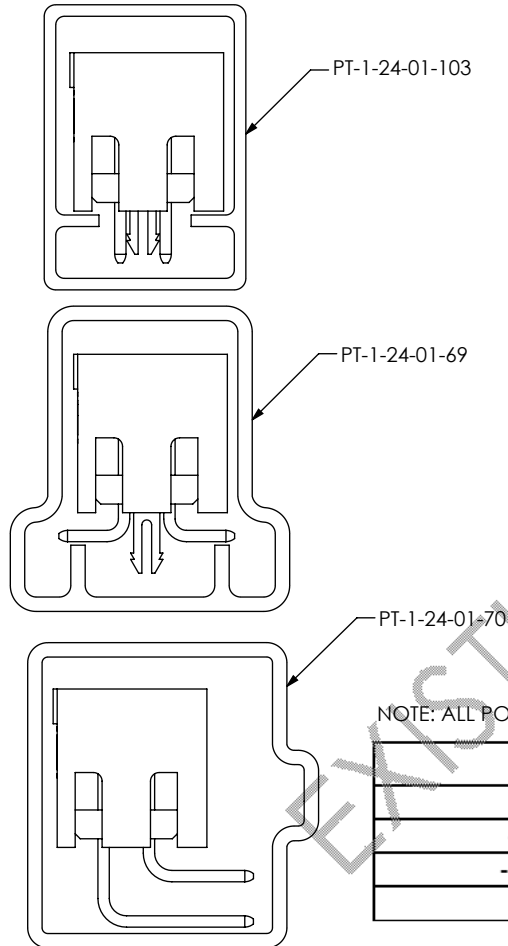
BY: T. NEWTON 01/04/2007 SHEET 3 OF 4

FIG 4
(TLMM-110-01-X-D-SM-K SHOWN)
(DIFFERENT AS SHOWN, OTHERWISE SAME AS FIG 1)



NOTE: "R" = USED MEASURED DIMENSION (REF)
"S" = $\{("R" - 7.50[.295])/2\} \pm 0.51[.0200]$

PACKAGING
ALL PARTS ARE LOADED WITH POSITIONS 1
TOWARDS ARROW



NOTE: ALL POSITIONS ARE TO BE TUBED.

TABLE 1		
OPTIONS	PACKAGING TUBE	PLUG
-TH, -TH-LC	PT-1-24-01-103	TP-09
-SM, -SM-LC	PT-1-24-01-69	TP-09
-RA	PT-1-24-01-70	TP-29

PROPRIETARY NOTE
THIS DOCUMENT CONTAINS INFORMATION
CONFIDENTIAL AND PROPRIETARY TO
SAMTEC, INC. AND SHALL NOT BE REPRODUCED
OR TRANSFERRED TO OTHER DOCUMENTS OR
DISCLOSED TO OTHERS OR USED FOR ANY
PURPOSE OTHER THAN THAT WHICH IT WAS
OBTAINED WITHOUT THE EXPRESSED WRITTEN
CONSENT OF SAMTEC, INC.

DO NOT SCALE DRAWING
SHEET SCALE: 3:1



520 PARK EAST BLVD, NEW ALBANY, IN 47150
PHONE: 812-944-6733 FAX: 812-948-5047
fromparent+e-Mail: info@SAMTEC.com code: 55322

DESCRIPTION: 2MM SHROUDED TERMINAL STRIP

DWG. NO. TLMM-1XX-01-X-D-XX-XX

BY: T. NEWTON 01/04/2007 SHEET 4 OF 4