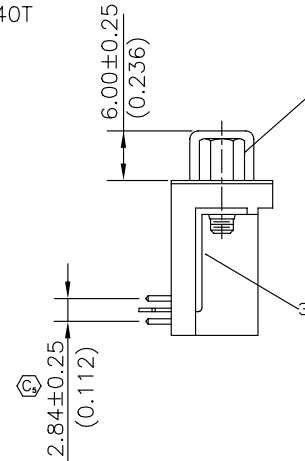
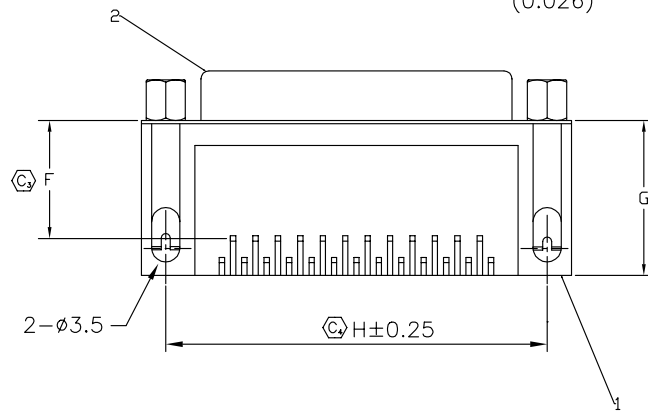
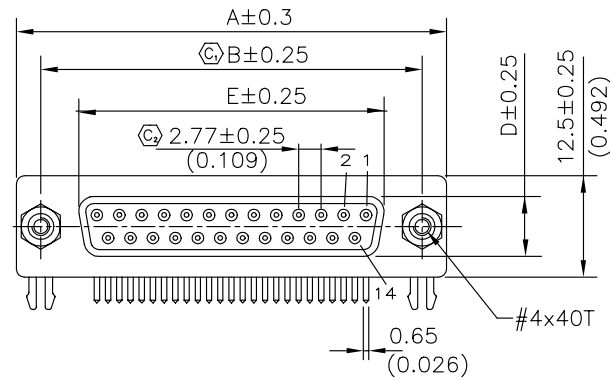


DSM-XXX-X-XX-S-X-XX-XX



TAIL SETBACK
-318
-590

SHELL SIZE/POSITION
-E-09 -A-15
-B-25 -C-37

GENDER
-S: Sockets

MOUNTING FACE
-FT: Flushed Threaded Inserts (RV-01)
-RJ: Removable Jack Screws (JS-01)
-MT: M3 Metric Threaded Inserts (RV-02)
-MJ: -MT option with removable M3 Jackscrews (JS-02)
-NT Non-Threaded Rivet (RV-03)

BOARD MOUNT
-FB: 318 Forked Board Lock (FB-318-TH)
-LB: 318 "L" Bracket (LB-318-TH)
-TL: 318 Threaded "L" Bracket (LB-318-T1)
-F2: 590 Forked Board Lock (FB-590-TH)
-T2: 590 Top Side Ground (LB-590-TH)

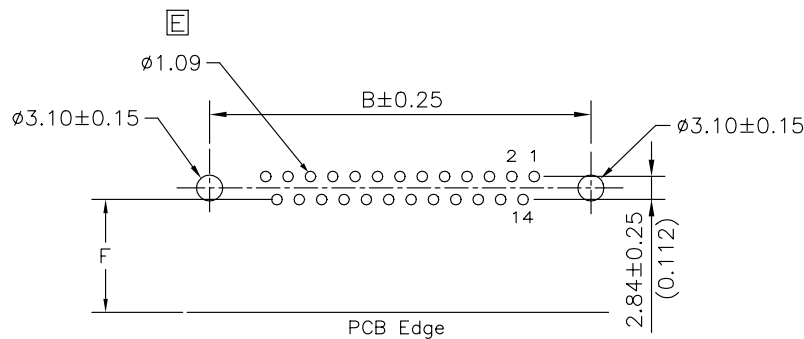
PLATING
-F: Flash Gold
-L: .000010" Gold
-S: .000030" Gold
(see note 2)

Position	"A"	"B"	"E"	"D"	"H"
E-09	30.81	24.99	16.33	7.90	24.99
A-15	39.14	33.32	24.66	7.90	33.32
B-25	53.04	47.04	38.38	7.90	47.04
C-37	69.32	63.50	54.84	7.90	63.50

1	SUB-DSM-XXX-X-XX-S-S
2	DSMS-X-S-N
3	SEE BOARD MOUNT
4	SEE MOUNTING FACE

Setback	"F"	"G"
318	8.08	12.00
590	15.00	18.80

DO NOT SCALE FROM THIS PRINT



PC BOARD LAYOUT

NOTES:

1. (C) REPRESENTS CRITICAL DIMENSION.
2. GOLD PLATING ON MATING AREAS, TIN LEAD ON TAILS.

UNLESS OTHERWISE SPECIFIED, DIMENSIONS ARE IN INCHES. TOLERANCES ARE:

DECIMALS .X: ±.40 .XX: ±.25 .XXX: ±.15

ANGLES 2°

PROPRIETARY NOTE
THIS DOCUMENT CONTAINS INFORMATION CONFIDENTIAL AND PROPRIETARY TO SAMTEC INC. AND SHALL NOT BE REPRODUCED OR TRANSFERRED TO OTHER DOCUMENTS OR DISCLOSED TO OTHERS OR USED FOR ANY PURPOSE OTHER THAN THAT FOR WHICH IT WAS OBTAINED WITHOUT THE EXPRESSED WRITTEN CONSENT OF SAMTEC INC.



520 PARK EAST BLVD. NEW ALBANY, IN 47150
(812) 944-6733 P.O. BOX 1147 TWX: 810-540-4085

CODE: 55322

DO NOT SCALE DRAWING
INSULATOR: PBT, UL 94V-0 Rated, Black
CONTACT OR TERMINAL: Brass
SHIELD: Steel

MAX FLASH ALLOWED: .051
MAX GATE VESTIGE: .051

F:\DWG\EXISPROD\ASSEMBLY\10\sub

SHEET SCALE: 1:2

DESCRIPTION:
D-Sub, F Conn., DIP Solder, R/A

DWG. NO.
DSM-XXX-X-XX-S-X-XX-XX

BY: J. Riley 1/27/04 SHEET 1 OF 1