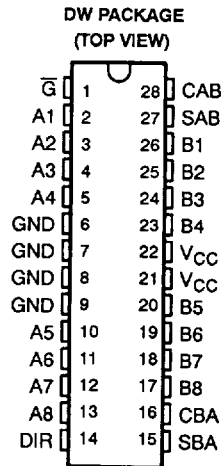


# 74ACT11648 OCTAL BUS TRANSCEIVER AND REGISTER WITH 3-STATE OUTPUTS

SCAS115 - D3458, MARCH 1990 - REVISED APRIL 1993

- Inputs Are TTL-Voltage Compatible
- Independent Registers A and B Buses
- Multiplexed Real-Time and Stored Data
- Inverting Data Paths
- Flow-Through Architecture to Optimize PCB Layout
- Center-Pin V<sub>CC</sub> and GND Configurations Minimize High-Speed Switching Noise
- EPIC™ (Enhanced-Performance Implanted CMOS) 1-μm Process
- 500-mA Typical Latch-Up Immunity at 125°C



## description

The 74ACT11648 consists of bus transceiver circuits with 3-state outputs, D-type flip-flops, and control circuitry arranged for multiplexed transmission of data directly from the data bus or from the internal storage registers. Data on the A or B bus will be clocked into the registers on the low-to-high transition of the appropriate clock pin (CAB or CBA). Examples of the four fundamental bus-management functions that can be performed with the octal bus transceivers and registers are shown in Figure 1.

Enable ( $\bar{G}$ ) and direction (DIR) pins are provided to control the transceiver functions. In the transceiver mode, data present at the high-impedance port may be stored in either register or in both. The select controls (SAB and SBA) can multiplex stored and real-time (transparent mode) data. The circuitry used for select control will eliminate the typical decoding glitch that occurs in a multiplexer during the transition between stored and real-time data. The direction control determines which bus will receive data when enable  $\bar{G}$  is active (low). In the isolation mode (control  $\bar{G}$  high), A data may be stored in one register and/or B data may be stored in the other register.

When an output function is disabled, the input function is still enabled and may be used to store and transmit data. Only one of the two buses, A or B, may be driven at a time.

The 74ACT11648 is characterized for operation from -40°C to 85°C.

EPIC is a trademark of Texas Instruments Incorporated.

PRODUCTION DATA Information is current as of publication date.  
Products conform to specifications per the terms of Texas Instruments  
standard warranty. Production processing does not necessarily include  
testing of all parameters.

Copyright © 1993, Texas Instruments Incorporated

**TEXAS  
INSTRUMENTS**

POST OFFICE BOX 655303 • DALLAS, TEXAS 75265

2-533

8961723 0094716 375

**74ACT11648**  
**OCTAL BUS TRANSCEIVER AND REGISTER**  
**WITH 3-STATE OUTPUTS**

SCAS115 - D3458, MARCH 1990 - REVISED APRIL 1993

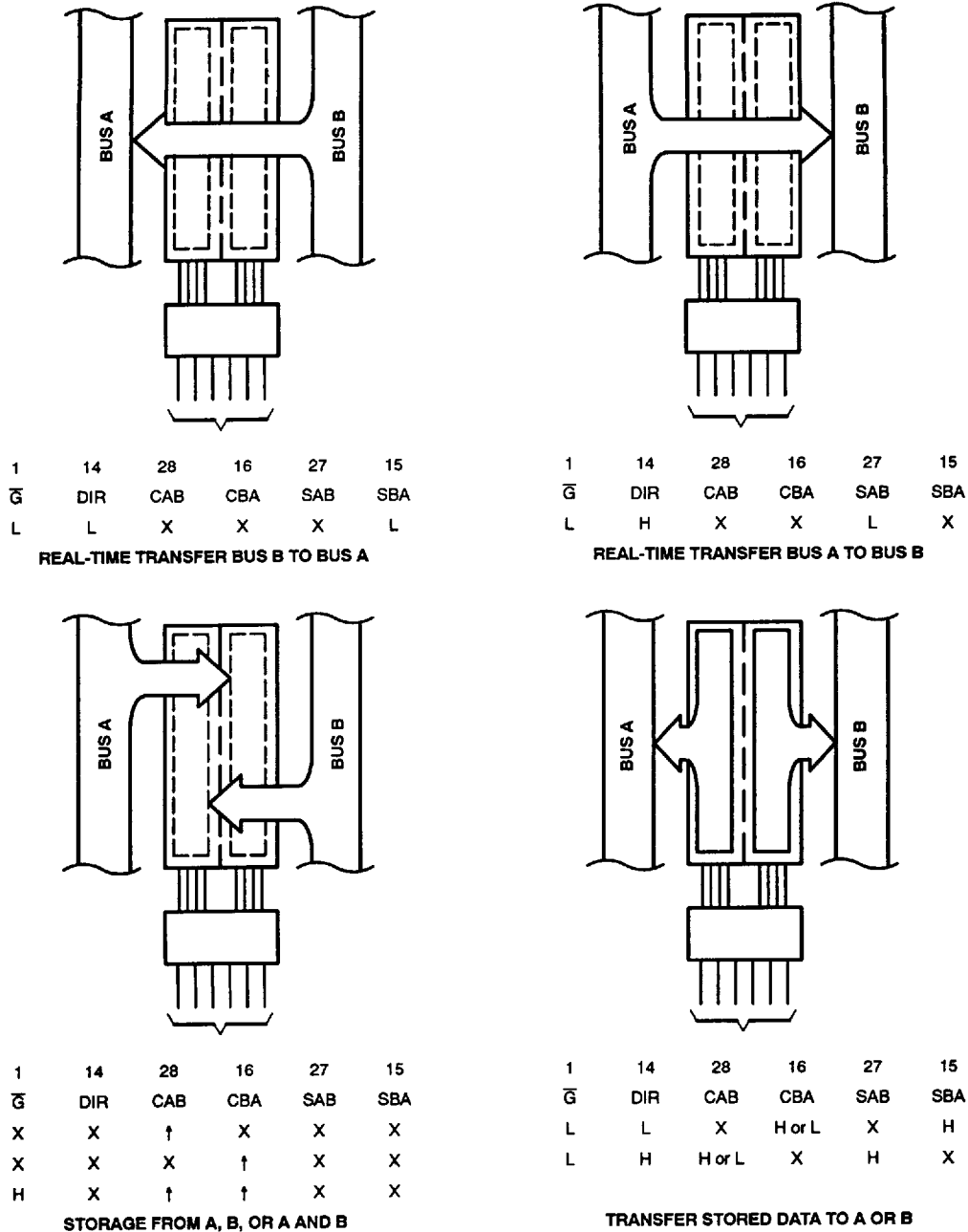


Figure 1. Bus-Management Functions

8961723 0094717 201



POST OFFICE BOX 655303 • DALLAS, TEXAS 75265

# 74ACT11648 OCTAL BUS TRANSCEIVER AND REGISTER WITH 3-STATE OUTPUTS

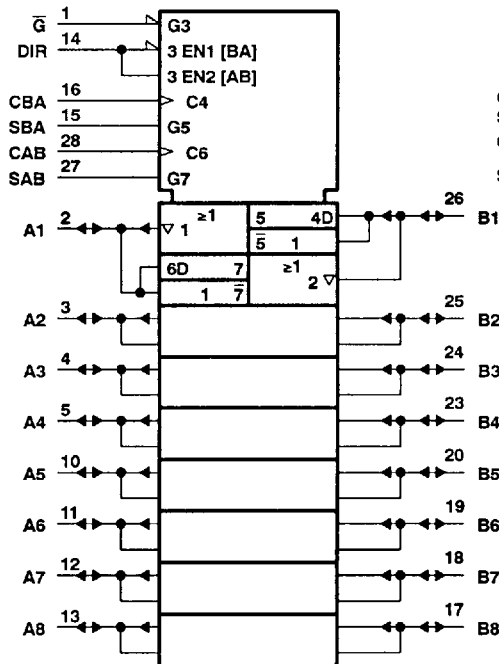
SCAS115 - D3458, MARCH 1990 - REVISED APRIL 1993

FUNCTION TABLE

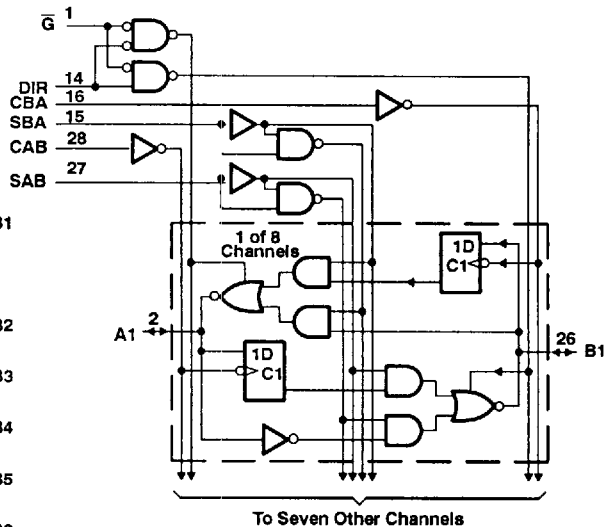
INPUTS						DATA I/O		OPERATION OR FUNCTION
$\bar{G}$	DIR	CAB	CBA	SAB	SBA	A1 THRU A8	B1 THRU B8	
X	X	↑	X	X	X	Input	Unspecified†	Store A, B unspecified†
X	X	X	↑	X	X	Unspecified†	Input	Store B, A unspecified†
H	X	↑	↑	X	X	Input	Input	Store A and B Data
H	X	H or L	H or L	X	X	Input	Input	Isolation, hold storage
L	L	X	X	X	L	Output	Input	Real-Time $\bar{B}$ Data to A Bus
L	L	X	H or L	X	H	Output	Input	Stored $\bar{B}$ Data to A Bus
L	H	X	X	L	X	Input	Output	Real-Time $\bar{A}$ Data to B Bus
L	H	H or L	X	H	X	Input	Output	Stored $\bar{A}$ Data to B Bus

† The data output functions may be enabled or disabled by various signals at the  $\bar{G}$  and DIR inputs. Data input functions are always enabled, i.e., data at the bus pins will be stored on every low-to-high transition on the clock inputs.

logic symbol‡



logic diagram (positive logic)



‡ This symbol is in accordance with ANSI/IEEE Std 91-1984 and IEC Publication 617-12.

**74ACT11648**  
**OCTAL BUS TRANSCEIVER AND REGISTER**  
**WITH 3-STATE OUTPUTS**

SCAS115 - D3458, MARCH 1990 - REVISED APRIL 1993

**absolute maximum ratings over operating free-air temperature range (unless otherwise noted)†**

Supply voltage range, $V_{CC}$ .....	-0.5 V to 7 V
Input voltage range, $V_I$ (see Note 1) .....	-0.5 V to $V_{CC} + 0.5$ V
Output voltage range, $V_O$ (see Note 1) .....	-0.5 V to $V_{CC} + 0.5$ V
Input clamp current, $I_{IK}$ ( $V_I < 0$ or $V_I > V_{CC}$ ) .....	$\pm 20$ mA
Output clamp current, $I_{OK}$ ( $V_O < 0$ or $V_O > V_{CC}$ ) .....	$\pm 50$ mA
Continuous output current, $I_O$ ( $V_O = 0$ to $V_{CC}$ ) .....	$\pm 50$ mA
Continuous current through $V_{CC}$ or GND .....	$\pm 200$ mA
Storage temperature range .....	-65°C to 150°C

† Stresses beyond those listed under "absolute maximum ratings" may cause permanent damage to the device. These are stress ratings only and functional operation of the device at these or any other conditions beyond those indicated under "recommended operating conditions" is not implied. Exposure to absolute-maximum-rated conditions for extended periods may affect device reliability.

NOTE 1: The input and output voltage ratings may be exceeded if the input and output current ratings are observed.

**recommended operating conditions**

	MIN	NOM	MAX	UNIT
$V_{CC}$ Supply voltage	4.5	5	5.5	V
$V_{IH}$ High-level input voltage	2			V
$V_{IL}$ Low-level input voltage			0.8	V
$V_I$ Input voltage	0		$V_{CC}$	V
$V_O$ Output voltage	0		$V_{CC}$	V
$I_{OH}$ High-level output current			-24	mA
$I_{OL}$ Low-level output current			24	mA
$\Delta t/\Delta v$ Input transition rise or fall rate	0		10	ns/V
$T_A$ Operating free-air temperature	-40		85	°C

8961723 0094719 084



**74ACT11648**  
**OCTAL BUS TRANSCEIVER AND REGISTER**  
**WITH 3-STATE OUTPUTS**

SCAS115 – D3458, MARCH 1990 – REVISED APRIL 1993

electrical characteristics over recommended operating free-air temperature range (unless otherwise noted)

PARAMETER		TEST CONDITIONS	V <sub>CC</sub>	T <sub>A</sub> = 25°C			MIN	MAX	UNIT
				MIN	TYP	MAX			
V <sub>OH</sub>		I <sub>OH</sub> = - 50 μA	4.5 V	4.4		4.4		V	
			5.5 V	5.4		5.4			
	I <sub>OH</sub> = - 24 mA	4.5 V	3.94		3.8				
		5.5 V	4.94		4.8				
		I <sub>OH</sub> = - 75 mA <sup>†</sup>	5.5 V			3.85			
V <sub>OL</sub>		I <sub>OL</sub> = 50 μA	4.5 V		0.1		0.1	V	
			5.5 V		0.1		0.1		
	I <sub>OL</sub> = 24 mA	4.5 V		0.36		0.44			
		5.5 V		0.36		0.44			
		I <sub>OL</sub> = 75 mA <sup>†</sup>	5.5 V			1.65			
I <sub>I</sub>	Control Inputs	V <sub>I</sub> = V <sub>CC</sub> or GND	5.5 V		± 0.1		± 1	μA	
I <sub>OZ</sub>	A or B ports <sup>‡</sup>	V <sub>I</sub> = V <sub>CC</sub> or GND	5.5 V		± 0.5		± 5	μA	
I <sub>CC</sub>		V <sub>I</sub> = V <sub>CC</sub> or GND, I <sub>O</sub> = 0	5.5 V		8		80	μA	
ΔI <sub>CC</sub> <sup>§</sup>		One input at 3.4 V, Other inputs at GND or V <sub>CC</sub>	5.5 V		0.9		1	mA	
C <sub>I</sub>	Control Inputs	V <sub>I</sub> = V <sub>CC</sub> or GND	5 V		4.5			pF	
C <sub>IO</sub>	A or B ports	V <sub>I</sub> = V <sub>CC</sub> or GND	5 V		12				

<sup>†</sup> Not more than one output should be tested at a time, and the duration of the test should not exceed 10 ms.

<sup>‡</sup> For I/O ports, the parameter I<sub>OZ</sub> includes the input leakage current.

<sup>§</sup> This is the increase in supply current for each input that is at one of the specified TTL voltage levels rather than 0 V or V<sub>CC</sub>.

timing requirements over recommended range of supply voltage and operating free-air temperature (unless otherwise noted) (see Figure 2)

		T <sub>A</sub> = 25°C		MIN	MAX	UNIT
		MIN	MAX			
f <sub>clock</sub>	Clock frequency	0	90	0	75	MHz
t <sub>w</sub>	Pulse duration, CAB or CBA high or low	6.7		6.7		ns
t <sub>su</sub>	Setup time, A before CAB <sup>†</sup> or B before CBA <sup>†</sup>	5		5		ns
t <sub>h</sub>	Hold time, A after CAB <sup>†</sup> or B after CBA <sup>†</sup>	2		2		ns



**74ACT11648**  
**OCTAL BUS TRANSCEIVER AND REGISTER**  
**WITH 3-STATE OUTPUTS**

SCAS115 - D3458, MARCH 1990 - REVISED APRIL 1993

switching characteristics over recommended ranges of supply voltage operating free-air temperature (unless otherwise noted) (see Figure 2)

PARAMETER	FROM (INPUT)	TO (OUTPUT)	T <sub>A</sub> = 25°C			MIN	MAX	UNIT
			MIN	TYP	MAX			
f <sub>max</sub>			75			75		MHz
t <sub>PLH</sub>	A or B	B or A	2.4	6.5	9.5	2.4	10.7	ns
t <sub>PHL</sub>			4.4	8.5	11.3	4.4	12.7	
t <sub>PZH</sub>	$\bar{G}$	A or B	4.2	9.2	13	4.2	14.6	ns
t <sub>PZL</sub>			4.3	9.8	13.9	4.3	15.6	
t <sub>PHZ</sub>	$\bar{G}$	A or B	5.7	8.7	11.3	5.7	12.2	ns
t <sub>PLZ</sub>			5.3	8.1	10.5	5.3	11.4	
t <sub>PLH</sub>	CBA or CAB	A or B	5.2	9.4	12	5.2	13.7	ns
t <sub>PHL</sub>			6	10.5	13.5	6	15.2	
t <sub>PLH</sub>	SAB or SBA† (with A or B high)	A or B	4.7	8.6	11.3	4.7	12.9	ns
t <sub>PHL</sub>			3.8	8.6	12	3.8	13.4	
t <sub>PLH</sub>	SBA or SAB† (with A or B low)	A or B	2.6	7.1	10.2	2.6	11.5	ns
t <sub>PHL</sub>			5.4	9.7	12.6	5.4	14.1	
t <sub>PZH</sub>	DIR	A or B	3.9	9.8	14.9	3.9	16.9	ns
t <sub>PZL</sub>			3.9	10.8	15.1	3.9	17.2	
t <sub>PHZ</sub>	DIR	A or B	4.5	8.2	10.6	4.5	11.5	ns
t <sub>PLZ</sub>			3.9	7.3	9.6	3.9	11.3	

† These parameters are measured with the internal output state of the storage register opposite to that of the bus input.

operating characteristics, V<sub>CC</sub> = 5 V, T<sub>A</sub> = 25°C

PARAMETER		TEST CONDITIONS	TYP	UNIT
C <sub>pd</sub>	Power dissipation capacitance per transceivers	C <sub>L</sub> = 50 pF, f = 1 MHz	61	pF
			15	

8961723 0094721 732

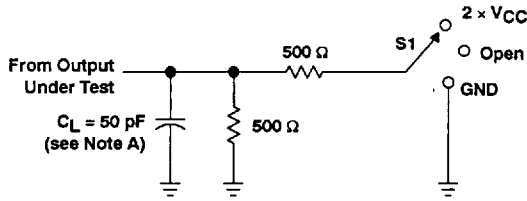


POST OFFICE BOX 655303 • DALLAS, TEXAS 75265

# 74ACT11648 OCTAL BUS TRANSCEIVER AND REGISTER WITH 3-STATE OUTPUTS

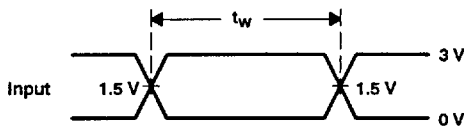
SCAS115 - D3458, MARCH 1990 - REVISED APRIL 1993

## PARAMETER MEASUREMENT INFORMATION

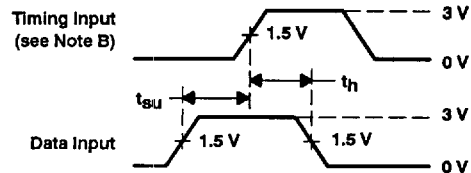


LOAD CIRCUIT

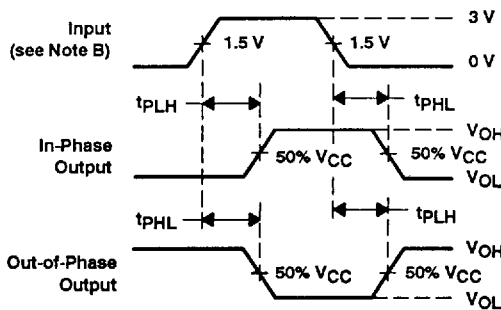
TEST	S1
$t_{PLH}/t_{PHL}$	Open
$t_{PLZ}/t_{PZL}$	$2 \times V_{CC}$
$t_{PHZ}/t_{PZH}$	GND



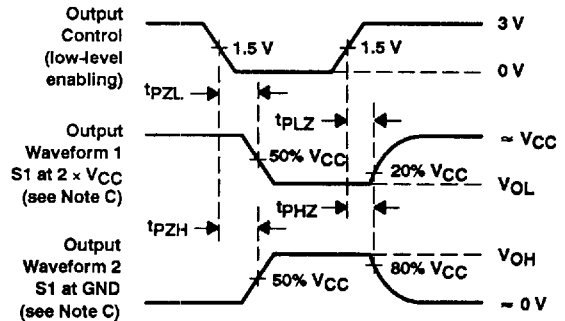
VOLTAGE WAVEFORMS



VOLTAGE WAVEFORMS



VOLTAGE WAVEFORMS



VOLTAGE WAVEFORMS

NOTES: A.  $C_L$  includes probe and jig capacitance.

B. All input pulses are supplied by generators having the following characteristics: PRR  $\leq 10 \text{ MHz}$ ,  $Z_O = 50 \Omega$ ,  $t_r = 3 \text{ ns}$ ,  $t_f = 3 \text{ ns}$ .

C. Waveform 1 is for an output with internal conditions such that the output is low except when disabled by the output control.

Waveform 2 is for an output with internal conditions such that the output is high except when disabled by the output control.

D. The outputs are measured one at a time with one input transition per measurement.

Figure 2. Load Circuit and Voltage Waveforms