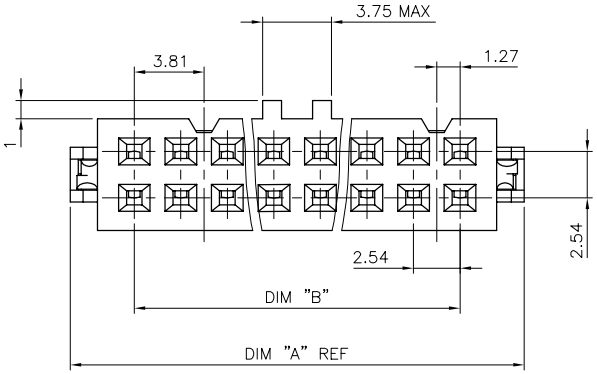


TRIANGLE INDICATES POSITION 1

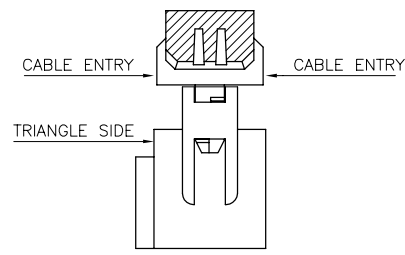
LEFT POLARIZING SLOT SEE TABLE

CENTRAL POLARIZING KEY

RIGHT POLARIZING SLOT SEE TABLE



COVER ORIENTATION



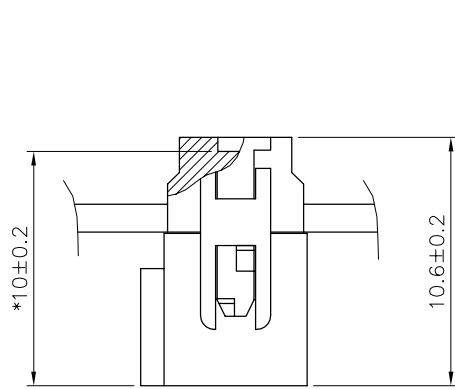
**NOTES:**

- 1 MATERIAL: BASE AND COVER: 30% GLASS FILLED POLYESTER FLAME RETARDANT PER UL-94-V0  
COLOUR GREY  
STRAIN RELIEF: UNREINFORCED THERMOPLASTIC FLAME RETARDANT PER UL-94-V0  
COLOUR GREY  
CONTACT: PHOSPHOR BRONZE
- 2 PLATING: 0.76  $\mu\text{m}$  Au OVER 1.27  $\mu\text{m}$  Ni  
IN CONTACT AREA REMAINDER OF PRODUCT (IDC PART)  
1.27  $\mu\text{m}$  Ni
- 3 TRIANGLE NOT MOLDED-IN ON 2x2 AND 2x3 POSITIONS WITH CENTRAL KEY
- 4 THE DASH "K" AT THE END OF THE PART NUMBER TO INDICATE A SOLID CENTER KEY.

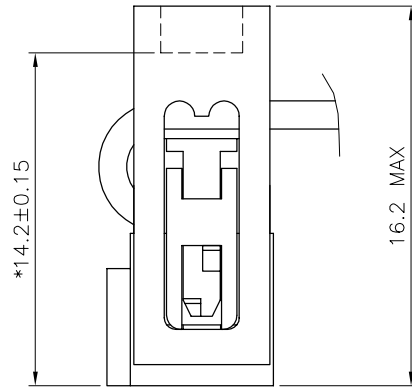
**CUSTOMER COPY FOR REFERENCE ONLY**

mat'l. code		SEE NOTES		tolerances unless otherwise specified		CUSTOMER COPY			
ltr	ecm no	dr	date	linear		projection	<b>QUICKIE III FEM</b> 0.76 $\mu\text{m}$ Au product family EURO QKIE FEM code 213 size dwg no 73369 sheet 1 of 4		
A	F80616	DLE	98.08.26			mm	scale 5:1		
B	F03019	DLE	03.01.23						
				angles					
				dr	P. NIZZI	94.02.09			
				engr	JM PHAMVAN	94.02.09			
				chr	P. NIZZI	94.02.09			
				appd	JM P	94.02.09			
sheet index	revision	B	B	B	B				
	sheet	1	2	3	4				

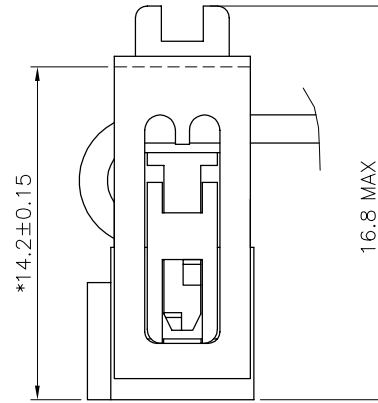
PRODUCT NUMBER	SIZE	DIM "A"	DIM "B"	DIM "C"	DIM "S"	SLOT STYLE
73369-X04	2x 2	9.54	2.54	9.46	5.66	NO SLOT
73369-X06	2x 3	12.08	5.08	12.00	8.20	RIGHT IF NO KEY
73369-X08	2x 4	14.62	7.62	14.54	10.74	RIGHT IF NO KEY
73369-X10	2x 5	17.16	10.16	17.08	13.28	RIGHT SLOT
73369-X14	2x 7	22.24	15.24	22.16	18.36	RIGHT SLOT
73369-X16	2x 8	24.78	17.78	24.70	20.90	2 SLOTS
73369-X18	2x 9	27.32	20.32	27.24	23.44	2 SLOTS
73369-X20	2x 10	29.86	22.86	29.78	25.98	2 SLOTS
73369-X24	2x 12	34.94	27.94	34.85	31.06	2 SLOTS
73369-X26	2x 13	37.48	30.48	37.40	33.60	2 SLOTS
73369-X30	2x 15	42.56	35.56	42.48	38.68	2 SLOTS
73369-X34	2x 17	47.64	40.64	47.56	43.76	2 SLOTS
73369-X40	2x 20	55.26	48.26	55.18	51.38	2 SLOTS
73369-X44	2x 22	60.34	53.34	60.26	56.46	2 SLOTS
73369-X50	2x 25	67.96	60.96	67.88	64.08	2 SLOTS
73369-X60	2x 30	80.66	73.66	80.58	76.78	2 SLOTS
73369-X64	2x 32	85.74	78.74	85.66	81.86	2 SLOTS



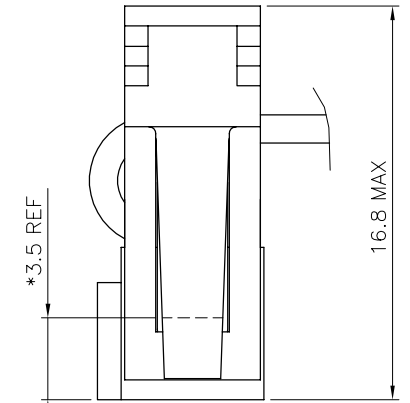
WITHOUT STRAIN RELIEF



WITH LOW PROFILE STRAIN RELIEF



WITH STANDARD STRAIN RELIEF

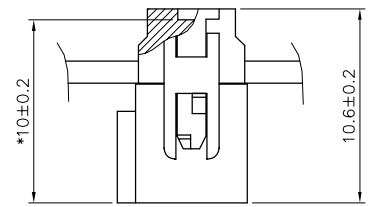
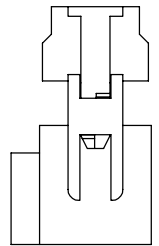
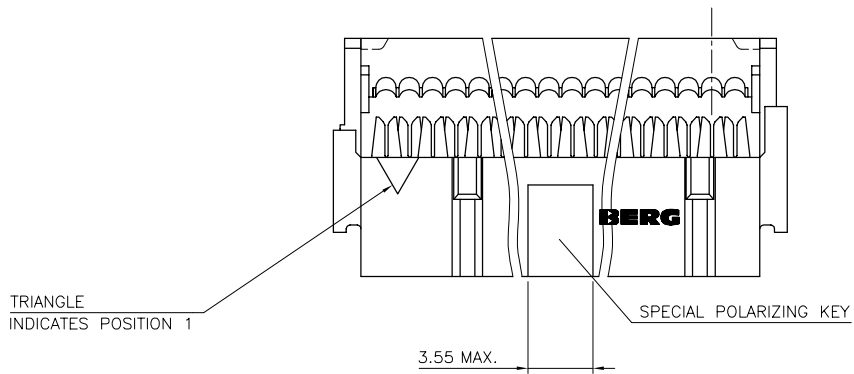


WITH LATCHING STRAIN RELIEF

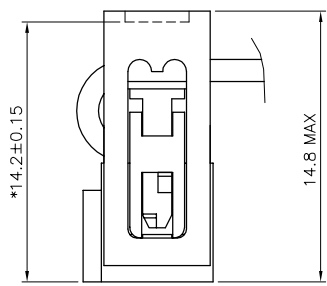
AFTER TERMINATION SIDE VIEW OF ASSEMBLY (\* LATCHING DIM ON HEADER)

73369-7YY		●				●	724
73369-6YY	●					●	624
73369-5YY		●			●		504 524
73369-4YY		●		●			
73369-3YY		●	●				304
73369-2YY	●				●		204 224
73369-1YY	●				●		
73369-0YY	●		●				004
PRODUCT NUMBER	WITH CENTRAL KEY	WITHOUT CENTRAL KEY	STANDARD STRAIN RELIEF	WITHOUT STRAIN RELIEF	LOW PROFILE STRAIN RELIEF	LATCHING STRAIN RELIEF	DASHES NOT AVAILABLE

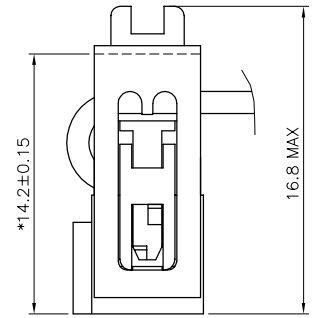
mat'l. code		tolerances unless otherwise specified		CUSTOMER COPY		FCI ELECTRONICS	
ltr	ec'n no	dr	date	linear	projection	title	www.fciconnect.com
A	F80816	DLE	98.08.26			QUICKIE III FEM	
B	F03019	DLE	03.01.23	angles		0.76 μm Au	
		dr	P. NIZZI	94.02.10	mm	product family	code
		engr	JM PHAMVAN	94.02.10		QKIE FEM	213
		chr	P. NIZZI	94.02.10	scale	size	sheet
		appd	JM P	94.02.10	N/A	73369	2 of 4
sheet index	revision sheet						



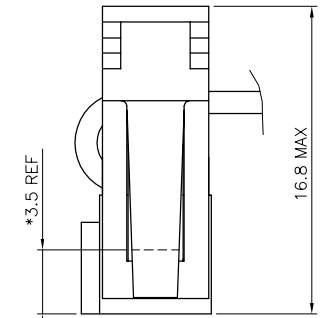
WITHOUT STRAIN RELIEF



WITH LOW PROFILE STRAIN RELIEF



WITH STANDARD STRAIN RELIEF



WITH LATCHING STRAIN RELIEF

AFTER TERMINATION SIDE VIEW OF ASSEMBLY (\* LATCHING DIM ON HEADER)

SPECIAL KEY PRODUCT

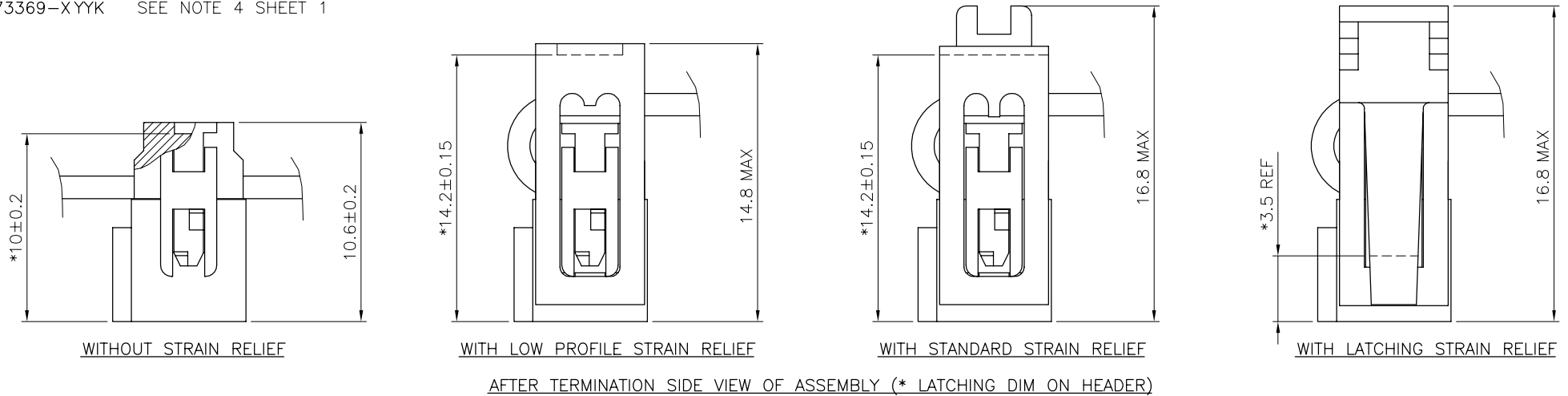
CUSTOMER SPECIAL

mat'l. code		tolerances unless otherwise specified		CUSTOMER COPY			
ltr	ec'n no	dr	date	linear	projection	title	
A	F80616	DLE	98.08.26			<b>QKICKIE III FEM</b> 0.76 μm Au	
B	F03019	DLE	03.01.23			product family	code
				angles	mm	EURO QKIE FEM	213
		dr	P.NIZZI	94.02.10	scale	A2	73369
		engr	JM PHAMVAN	94.02.10	5:1		3 of 4
		chr	P.NIZZI	94.02.10			
		appd	JMP	94.02.10			
sheet index	revision sheet						

FCI ELECTRONICS S.p.A. - Via Salaria, 1159 - 00198 Roma, Italy  
 FCI ELECTRONICS S.p.A. - Via Salaria, 1159 - 00198 Roma, Italy  
 FCI ELECTRONICS S.p.A. - Via Salaria, 1159 - 00198 Roma, Italy

PRODUCT NUMBER	SIZE	DIM "A"	DIM "B"	DIM "C"	DIM "S"	SLOT STYLE
73369-X06K	2x 3	12.08	5.08	12.00	8.20	N/A
73369-X08K	2x 4	14.62	7.62	14.54	10.74	N/A
73369-X10K	2x 5	17.16	10.16	17.08	13.28	RIGHT SLOT
73369-X12K	2x 6	19.70	12.70	19.62	15.87	RIGHT SLOT
73369-X14K	2x 7	22.24	15.24	22.16	18.36	RIGHT SLOT
73369-X16K	2x 8	24.78	17.78	24.70	20.90	2 SLOTS
73369-X18K	2x 9	27.32	20.32	27.24	23.44	2 SLOTS
73369-X20K	2x 10	29.86	22.86	29.78	25.98	2 SLOTS
73369-X24K	2x 12	34.94	27.94	34.85	31.06	2 SLOTS
73369-X26K	2x 13	37.48	30.48	37.40	33.60	2 SLOTS
73369-X30K	2x 15	42.56	35.56	42.48	38.68	2 SLOTS
73369-X34K	2x 17	47.64	40.64	47.56	43.76	2 SLOTS
73369-X40K	2x 20	55.26	48.26	55.18	51.38	2 SLOTS
73369-X44K	2x 22	60.34	53.34	60.26	56.46	2 SLOTS
73369-X50K	2x 25	67.96	60.96	67.88	64.08	2 SLOTS
73369-X60K	2x 30	80.66	73.66	80.58	76.78	2 SLOTS
73369-X64K	2x 32	85.74	78.74	85.66	81.86	2 SLOTS

73369-XYK SEE NOTE 4 SHEET 1



71600-6YYK	●				●	612 624	
71600-2YYK	●			●		212 224	
71600-1YYK	●		●				
71600-0YYK	●		●				
PRODUCT NUMBER	WITH CENTRAL KEY	WITHOUT CENTRAL KEY	STANDARD STRAIN RELIEF	WITHOUT STRAIN RELIEF	LOW PROFILE STRAIN RELIEF	LATCHING STRAIN RELIEF	DASHES NOT AVAILABLE

mat'l. code		tolerances unless otherwise specified		CUSTOMER COPY		FCI ELECTRONICS	
ltr	ecn no	dr	date	linear	projection	title	www.fciconnect.com
A	F80816	DLE	98.08.26		⊕	QUICKIE III FEM	
B	F03019	DLE	03.01.23	angles		0.76 μm Au	
		dr	P. NIZZI	94.02.10	mm	product family	code
		engr	JM PHAMVAN	94.02.10		QKIE FEM	213
		chr	P. NIZZI	94.02.10	scale	size	sheet
		appd	JM P	94.02.10	N/A	73369	4 of 4
sheet index	revision sheet						