

# BOARD SPACERS

# BS SERIES

## MATERIAL

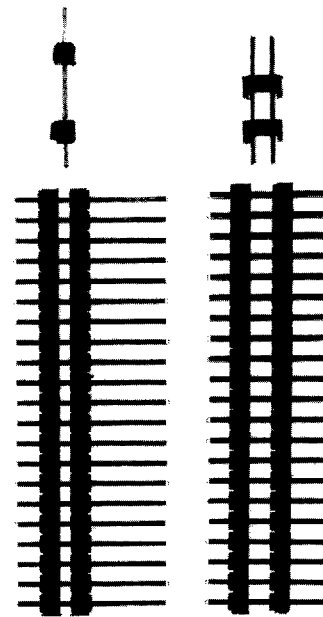
Insulator: Black PBT (UL 94V-0)  
 Contact: Copper Alloy  
 Contact Plating: Gold or Tin Over Nickel (see "Plating Option" below)

## SPECIFICATIONS

Current Rating: 3A  
 Insulator Resistance: 5000 M $\Omega$  Min  
 Contact Resistance: 10 m $\Omega$   
 Voltage Rating: 500V AC  
 Operating Temperature: -55°C - +105°C

## FEATURES

- ♦ Allows custom design of specific board spacer requirements
- ♦ Side and end stackable (on broken edges)
- ♦ Breakable, with notches for ease
- ♦ Used to maintain the dimensions between two PC boards
- ♦ Provides a means of electronically connecting two discrete boards
- ♦ Supplied with standoffs, which facilitate post solder cleaning



## HOW TO ORDER:



1. **SERIES**  
 BS = Board Spacers

4. **PLATING OPTION**

- T = Tin
- G = Full Gold Flash
- G15 = Full Gold, 15 $\mu$ "
- G30 = Full Gold, 30 $\mu$ "
- SG = Selective Gold Flash
- SG15 = Selective Gold, 15 $\mu$ "
- SG30 = Selective Gold, 30 $\mu$ "

2. **ROW OPTION**  
 1 = Single Row  
 2 = Dual Row

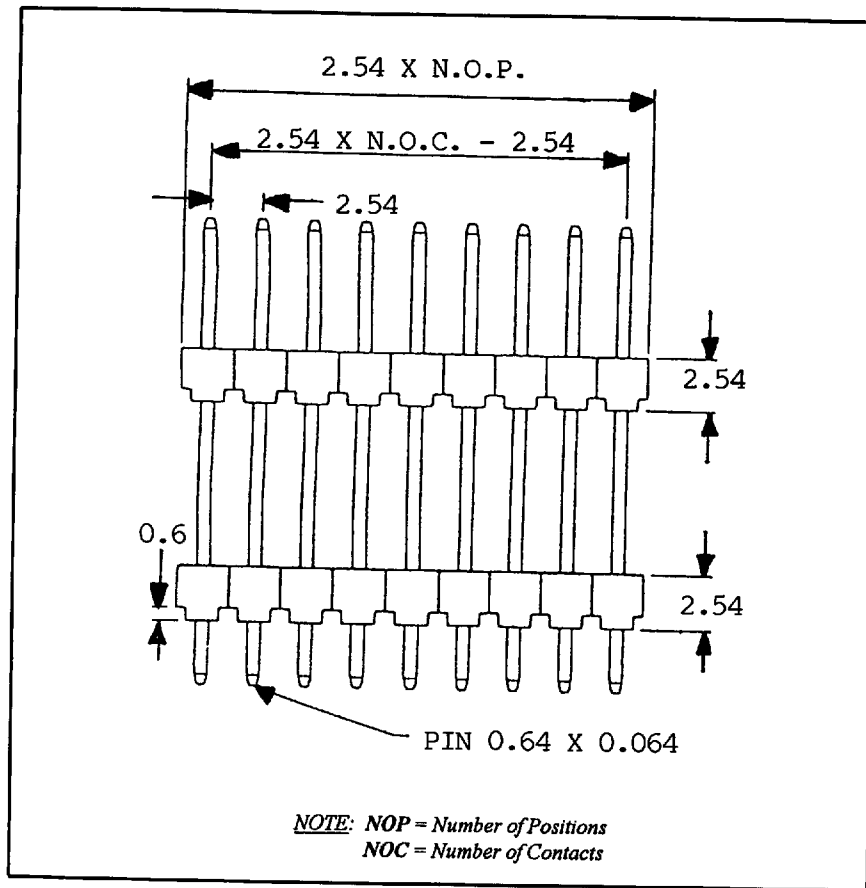
5. **PIN LENGTH OPTION\***

- A = Solder Tail Length = \_\_\_\_\_ mm
- B = Middle Length = \_\_\_\_\_ mm
- C = Contact Length = \_\_\_\_\_ mm

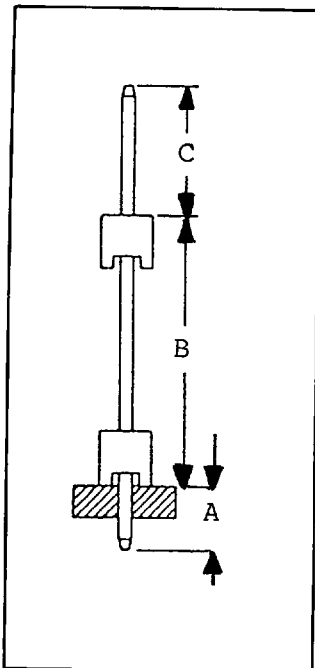
\* Please fill out specifics for 5, but contact factory for availability and assigned number code

3. **POSITION**  
 Single Row = 01 through 40  
 Dual Row = 02 through 80

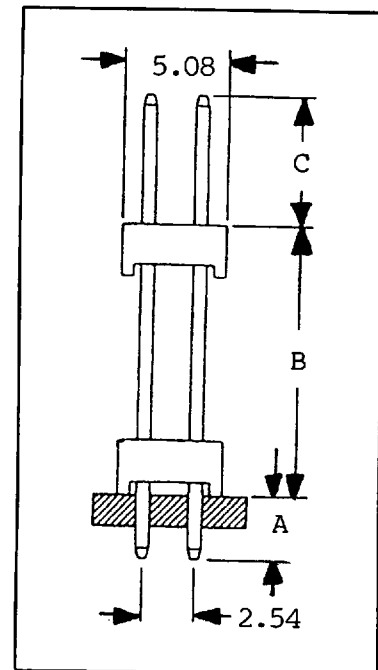
## SPECIFICATIONS:



### SINGLE ROW



### DUAL ROW



**ENGINEERS:** For detailed Data Sheets, including *tolerances*, see pages 157 & 159 or call us!