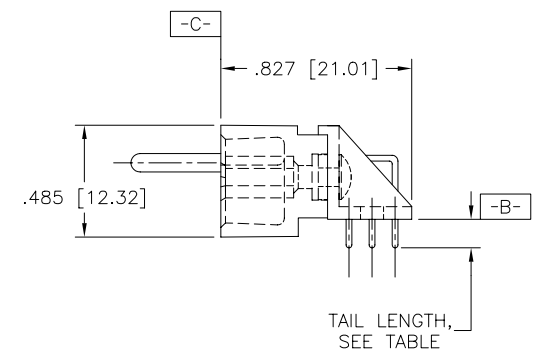
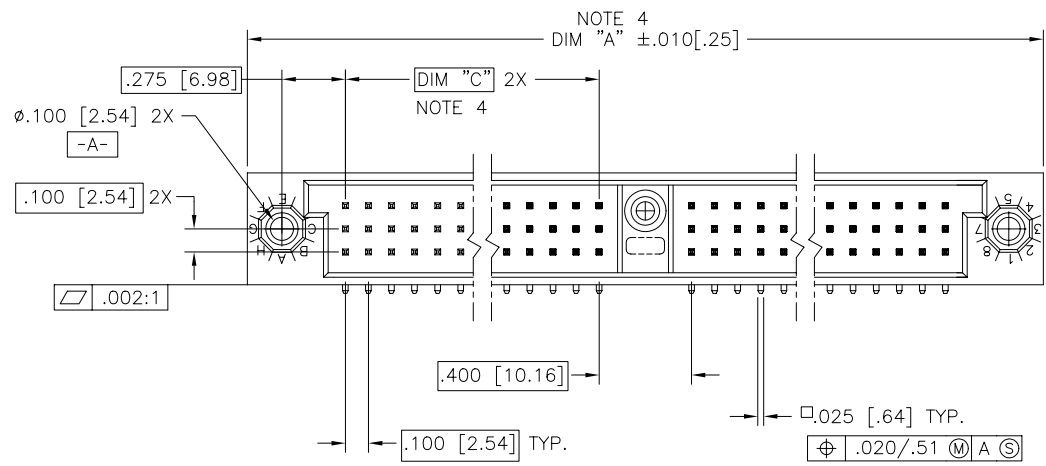
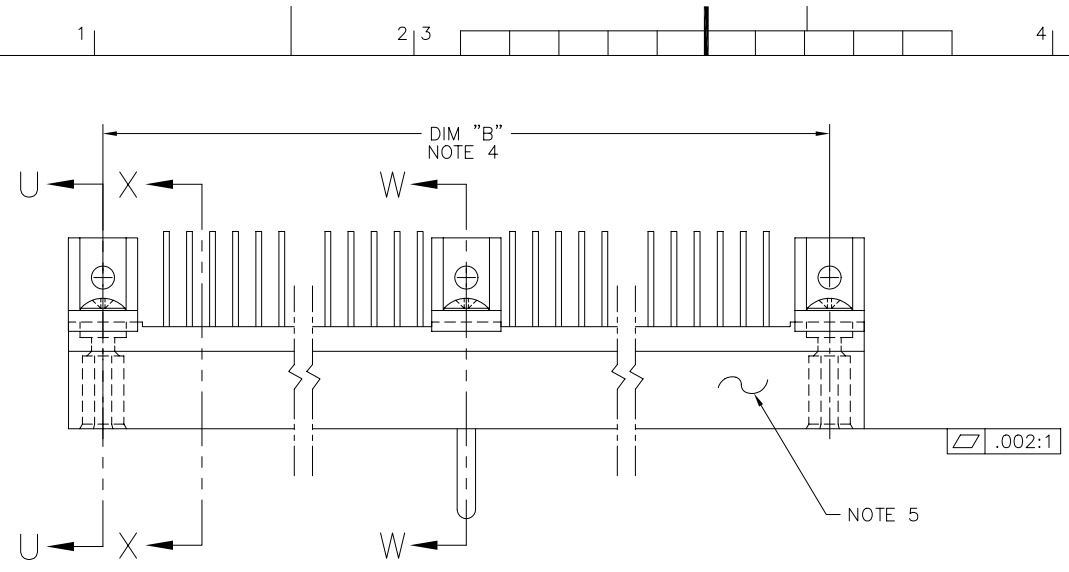




FCIconnect.com

Copyright FCI

PRODUCT NUMBER
SEE NOTE 1



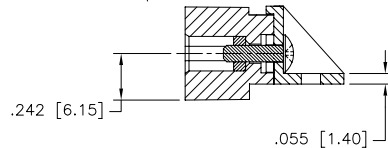
mat'l. code SEE NOTE 3		surface ISO 1302 <input checked="" type="checkbox"/>		tolerance ISO 406 ISO 1101		projection 		product family HPC	
ltr		ecn no		dr		date		tolerances unless otherwise specified	
C	v23813	MRC	1/04/92	angles	linear	.xx ±.01/.3		INCH/MM	
D	v40227	PDP	1/11/94			.xxx ±.005/.13			
E	v90522	HTB	2/26/99	σ±2'		.xxxx ±.0020/.051		scale 1:1	
F	v00262	JWS	1/26/00	dr	D. HORCHLER	9/01/05		title 3 ROW R/A HEADER SOLDER TO BOARD, 1 G.P.	
G	v05-0851	DCH	9/01/05	enfr	BREWBAKER	9/01/05		dwg no 50120	
H	v05-1040	HTB	11/14/05	chr	BREWBAKER	9/01/05		sheet 1 of 2 size A3	
J	M06-0255	MNR	7/06/06	appd	BREWBAKER	9/01/05		type Product Customer Drawing	
sheet	revision	J	J						
index	sheet	1	2						

form: A3

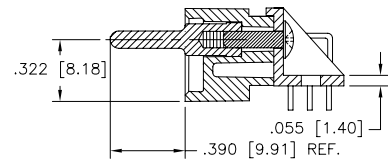
PRODUCT NUMBER	PLATING IN CONTACT AREA	TAIL LENGTH REF.
50120-1XXXH	30u"/0.76u GOLD	.180 / 4.57
50120-1XXXJ	30u"/0.76u GOLD	.120 / 3.05
50120-3XXXH	50u"/1.27u GOLD	.180 / 4.57
50120-3XXXJ	50u"/1.27u GOLD	.120 / 3.05
50120-5XXXH	30u"/0.76u GXT	.180 / 4.57
50120-5XXXHLF	30u"/0.76u GXT	.180 / 4.57
50120-5XXXJ	30u"/0.76u GXT	.120 / 3.05
50120-5XXXJLF	30u"/0.76u GXT	.120 / 3.05

NOTES 6 AND 7

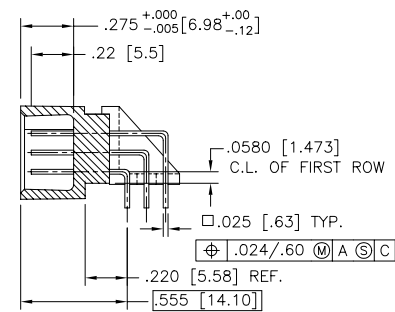
NOTES 6 AND 7



SECTION U-U



SECTION W-W



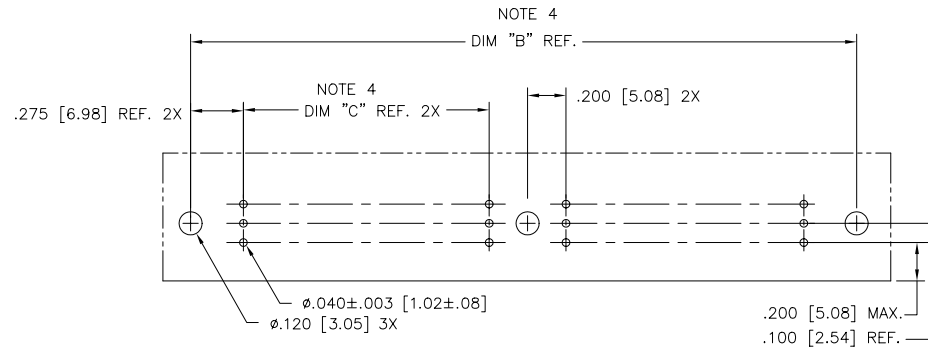
SECTION X-X

NOTES:

- ① PRODUCT NUMBERING CODE:
50120 - X.YYY Z LF
- X — LEAD FREE (OPTIONAL)
 - Y — TAIL LENGTH (NOTE 5)
 - Z — NO. OF POSITIONS (NOTE 2)
 - LF — PLATING (NOTE 4)
 - LF — BASE NUMBER

- PRODUCT NUMBERING CODE FOR SELECT LOAD PART NUMBERS:
50120 - XXYYY LF
- XX — LEAD FREE (OPTIONAL)
 - YYY — SEQUENCE NUMBER
 - LF — ALWAYS "XX" BASE NUMBER

- ② THIS PRODUCT IS CONFIGURED IN SIZES OF 20 THRU 122 COLUMNS IN INCREMENTS OF TWO.
i.e.: 20,22,24,26,.....118,120,122.
- ③ HOUSING MATERIAL: GLASS AND MINERAL FILLED HIGH TEMP. THERMOPLASTIC. FLAME RETARDANT PER UL94V-0. COLOR: BLACK.
PIN MATERIAL: PHOS. BRONZE
- ④ LENGTH FORMULAS:
"A" = .100/2.54 x NO. OF COLUMNS + 1.05/26.7
"B" = .100/2.54 x NO. OF COLUMNS + .750/19.05
"C" = .100/2.54 x NO. OF COLUMNS/2 - .100/2.54
- ⑤ MANUFACTURE'S NAME, P/N, AND LOT CODE TO APPEAR ON THIS SURFACE PER BUS-12-108.
- ⑥ THIS PRODUCT (WITH "LF" SUFFIX) MEETS EUROPEAN UNION DIRECTIVES AND OTHER COUNTRY REGULATIONS AS DESCRIBED IN GS-22-008.
- ⑦ THIS HOUSING WILL WITHSTAND EXPOSURE TO 260°C PEAK TEMPERATURE FOR 10-30 SECONDS IN A CONVECTION, INFRA-RED OR VAPOR PHASE OVEN.



RECOMMENDED PCB LAYOUT
(ALL HOLES LOCATED ON .100/2.54 GRID UNLESS OTHERWISE SPECIFIED)

mat'l. code		surface		tolerance		projection		product family	
SEE NOTE 3		ISO 1302 ✓		ISO 406 ISO 1101				HPC	
ltr		ecn		no		dr		date	
J									
		angles		linear		.xx ±.01/.3		INCH/MM	
		σ±2'				.xxx ±.005/.13		scale 1:1	
		dr		D. HORCHLER		9/01/05		title	
		enfr		BREWBAKER		9/01/05		3 ROW R/A HEADER	
		chr		BREWBAKER		9/01/05		SOLDER TO BOARD, 1 G.P.	
		appd		BREWBAKER		9/01/05		dwg no	
								sheet 2 of 2 size	
								50120 A3	
								type Product Customer Drawing	
sheet index		revision sheet							