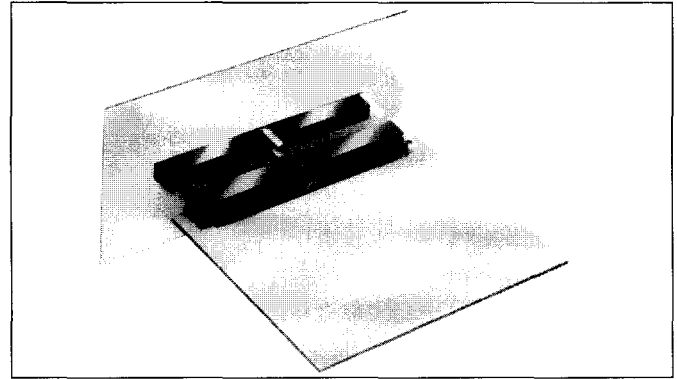


Series 8218 – 0.050" Staggered Dual Row

FEATURES

- High contact density
- For parallel or perpendicular p.c. card mounting
- High mounting density (.050" centers, minimum)
- Nylon end sections for mounting and card guidance
- Mounting hardware supplied with connector
- Mates with 8219 Series



TECHNICAL SPECIFICATIONS

Current Rating:

5 amperes, maximum

Contact Resistance:

0.005 ohm, maximum

Contact Material and Plating:

Phosphor Bronze
nickel plate, 30 to 50 microinches followed by
gold plate, 10 to 20 microinches

Insulator Material:

Diallyl phthalate, glass-filled, flame resistant,
end guides: nylon

Insulation Resistance:

5,000 megohms, minimum

Dielectric Withstanding Voltage:

Sea Level: 1000 Volts rms

3.4" Hg: 500 Volts rms

Insertion/Withdrawal Force:

2 to 16 ounces per contact

ORDERING CODE

00

8218

100

000

004



Number of Contacts
002 to 076 for connectors
without center guide

Contact Code





Variation Code
001 = Receptacle
002 = Plug-Card
005 = Plug-Board

with keying pins	with keying holes
011 = Receptacle	021 = Receptacle
012 = Plug-Card/pin inserted in odd position	022 = Plug-Card/pin inserted in odd position
013 = Plug-Card/pin inserted in even position	023 = Plug-Card/pin inserted in even position
017 = Plug-Board	027 = Plug-Board

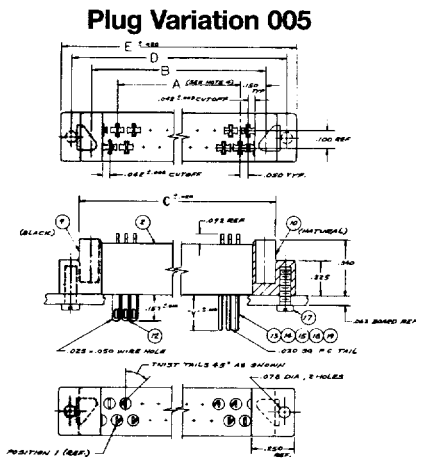
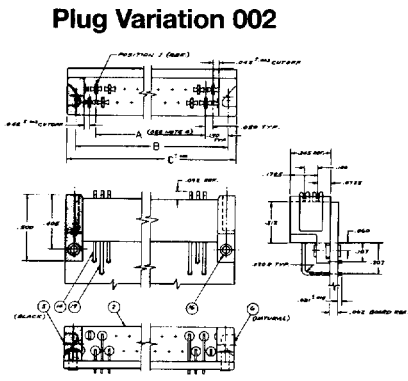
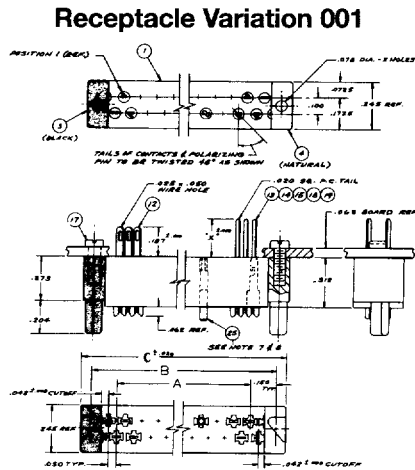
Variant 002 right angled contacts

000 = 60 8200 16 33 
P.C. Tail
000 = 60 8200 16 63 
P.C. Tail

Variants 001 and 005

722 = 60 8200 16 13 
Wire Hole Tail
736 = 60 8200 16 33 
P.C. Tail (X = 9/32", Y = 1/4")
753 = 60 8200 16 53 
P.C. Tail (X = 1/8", Y = 3/32")
771 = 60 8200 16 63 
P.C. Tail (X = 31/64", Y = 29/64")

Series 8218 – 0.050" Staggered Dual Row



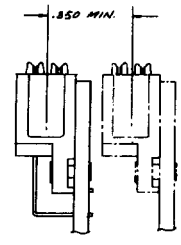
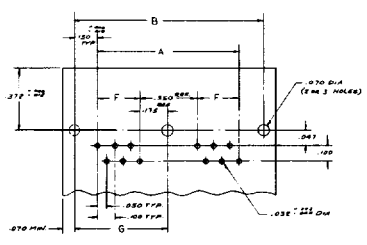
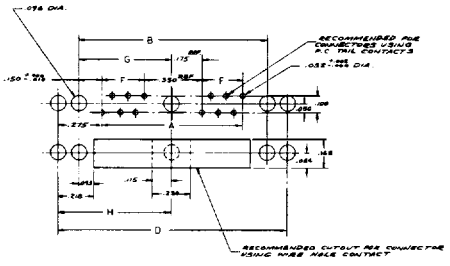
RECEPTACLE 001 – MATES WITH PLUGS 002 AND 005

MOUNTING LAYOUT

Variation 001 and 005

Variation 002

Minimum Center to Center Spacing for Adjustment Plugs



DIMENSIONS:

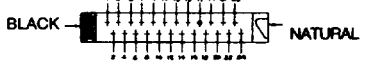
(inches)

A	B	C	D	E
(No. of contacts x 0.050") - 0.050"	"A" dimension + 0.300"	"A" dimension + 0.440"	"A" dimension + 0.550"	"A" dimension + 0.690"

POLARIZATION

Keying Ordering No.
60-8218-4715-00-148

PLUG OR RECEPTACLE



Determine polarization pin location from views.

P = Specify location by contact # where polarizing pin must be inserted.

H = Specify location by contact # where contact must be omitted for mating.

Typical Example: 00-8218-024-721-001-P-17 (polarizing pin mtd. in position 17)
00-8218-024-721-005-H-17 (polarizing hole is in position 17)